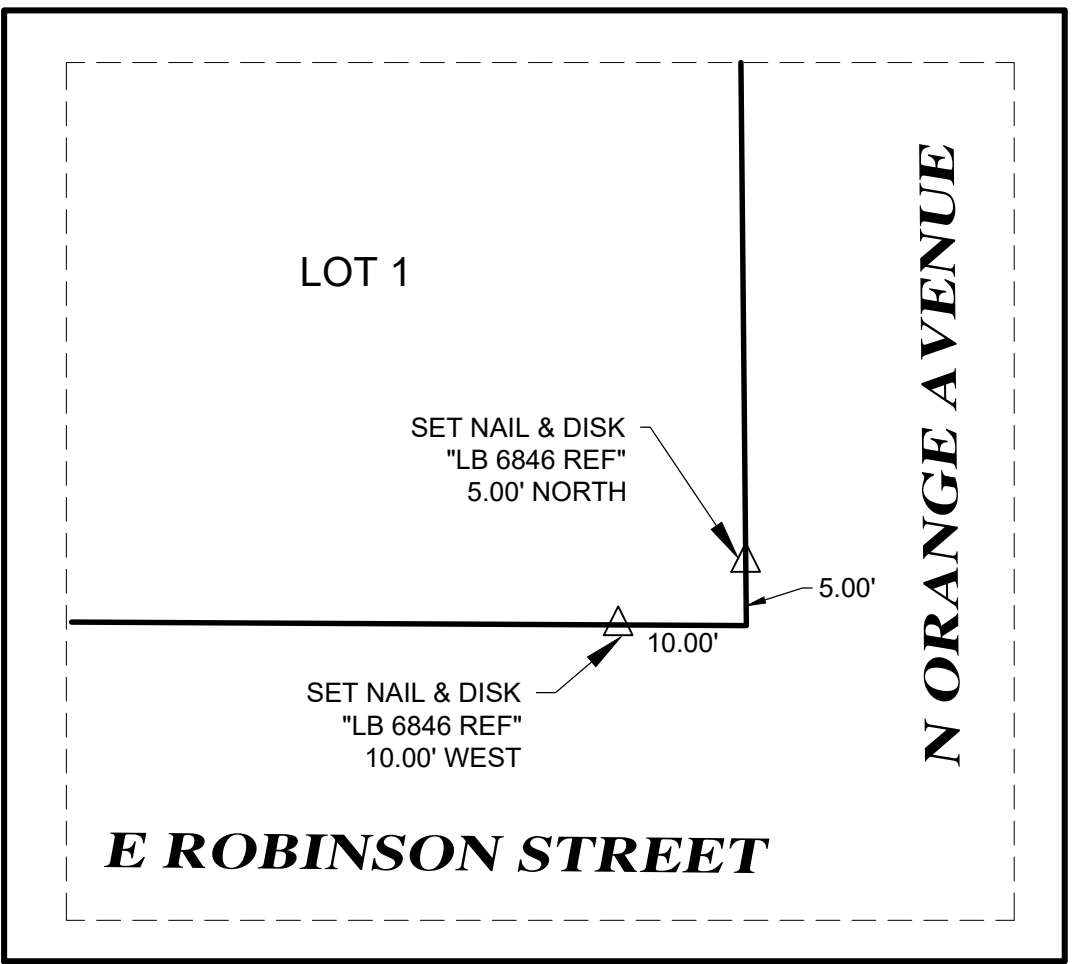


# MAA ROBINSON

A REPLAT OF LOTS 1, 7, 8 AND 9 OF W.R. DENNY'S SUBDIVISION  
AS RECORDED IN PLAT BOOK A, PAGE 2  
A REPLAT OF LOT 14 AND A PORTION OF LOT 15 OF G. TAYLOR'S ADDITION TO  
ORLANDO  
AS RECORDED IN PLAT BOOK C, PAGES 27 AND 69  
A REPLAT OF LOT 4, BLOCK B OF STATE ADDITION  
AS RECORDED IN PLAT BOOK Q, PAGE 12  
ALL OF THE PUBLIC RECORDS OF ORANGE COUNTY, FLORIDA

SECTION 26, TOWNSHIP 22 SOUTH, RANGE 29 EAST  
CITY OF ORLANDO, ORANGE COUNTY, FLORIDA



DETAIL "A"  
SCALE 1" = 15'

LEGEND	
	SET NAIL & DISK "PRM LB 6846"
PRM	PERMANENT REFERENCE MONUMENT
R/W	RIGHT OF WAY
LB	LICENSED BUSINESS
REF	REFERENCE
P.B.	PLAT BOOK
D.B.	DEED BOOK
PG.	PAGE
P.O.B.	POINT OF BEGINNING
T	TOWNSHIP
R	RANGE
CCR	CERTIFIED CORNER RECORD
PSM	PROFESSIONAL SURVEYOR & MAPPER

