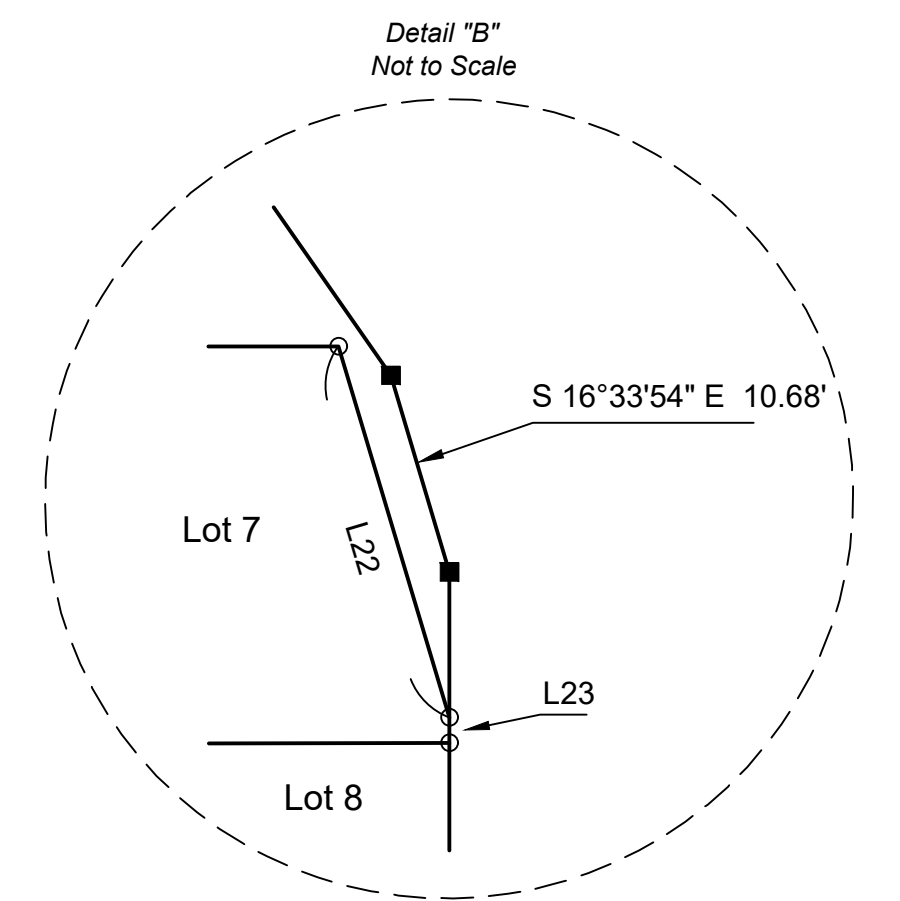
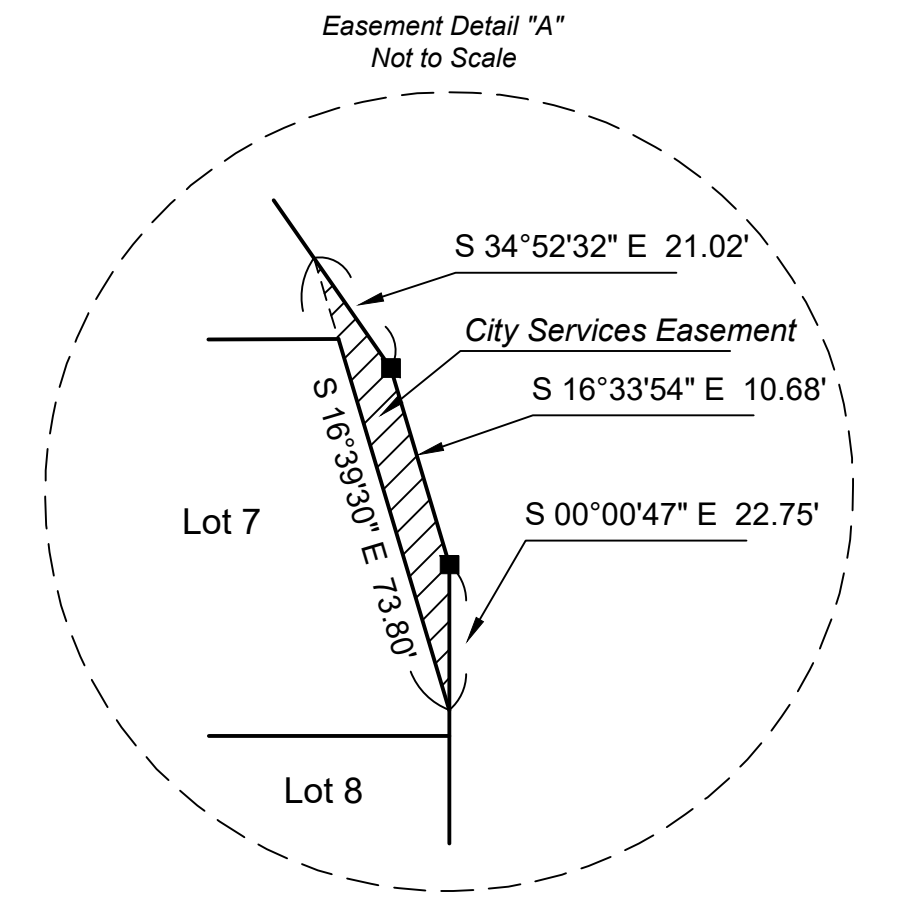
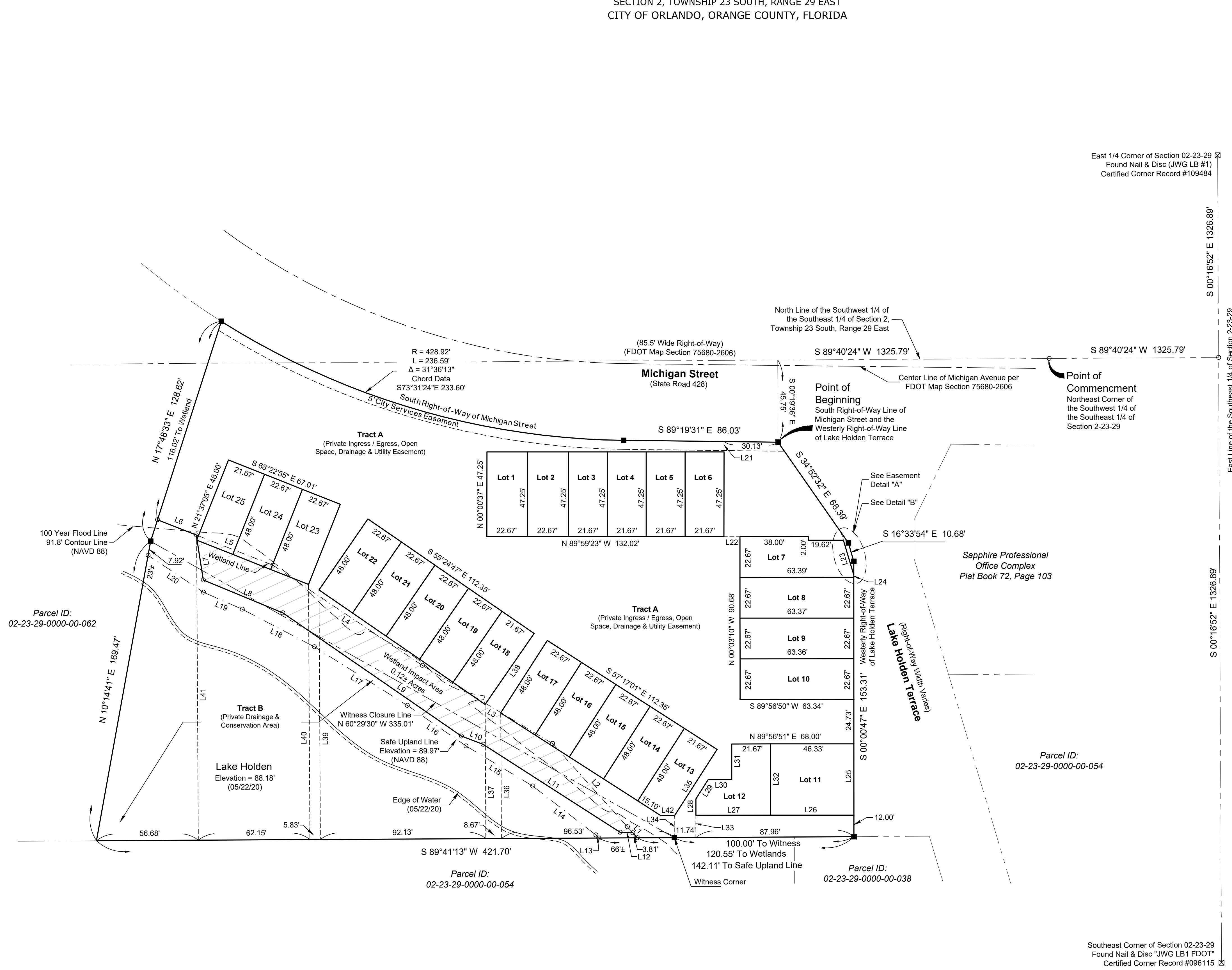
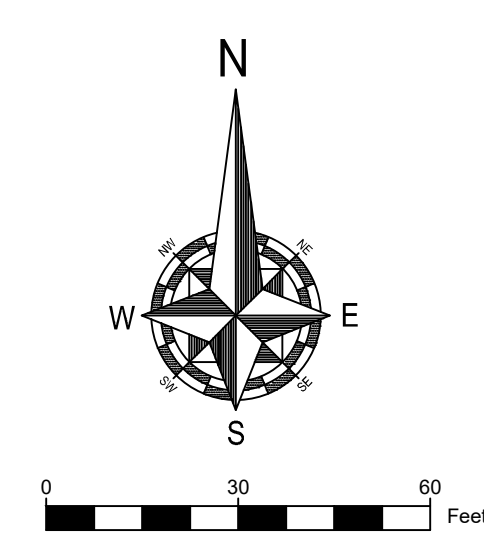


SODO HOUSE BY THE LAKE
SECTION 2, TOWNSHIP 23 SOUTH, RANGE 29 EAST
CITY OF ORLANDO, ORANGE COUNTY, FLORIDA



Line Table					
Line #	Direction	Length	Line #	Direction	Length
L1	N42°01'08"W	8.30'	L22	S89°59'28"E	8.88'
L2	N42°01'08"W	62.39'	L23	S16°39'30"E	20.18'
L3	N59°00'10"W	84.52'	L24	S00°00'47"E	1.33'
L4	N56°09'51"W	100.12'	L25	S00°00'47"E	39.67'
L5	N68°28'56"W	45.80'	L26	S89°56'51"W	46.30'
L6	N68°28'56"W	23.22'	L27	S89°56'51"W	41.67'
L7	N08°44'15"W	25.33'	L28	N00°03'09"W	9.02'
L8	N67°32'15"W	47.89'	L29	N32°29'24"E	12.93'
L9	N55°24'12"W	120.85'	L30	N89°56'51"E	13.05'
L10	N69°17'04"W	12.90'	L31	N00°03'09"W	19.75'
L11	N57°16'43"W	90.63'	L32	S00°03'09"E	39.67'
L12	N87°48'09"W	7.11'	L33	S00°03'09"E	12.40'
L13	N42°37'24"W	2.32'	L34	S00°18'47"E	12.33'
L14	N52°13'19"W	44.49'	L35	S32°42'59"W	43.73'
L15	N58°58'35"W	43.31'	L36	S00°18'47"E	69.95'
L16	N55°23'38"W	39.74'	L37	S00°18'47"E	74.75'
L17	N57°44'47"W	61.22'	L38	N34°35'13"E	48.00'
L18	N62°28'25"W	45.21'	L39	S00°18'47"E	139.02'
L19	N66°19'57"W	23.62'	L40	S00°18'47"E	142.11'
L20	N56°17'58"W	37.02'	L41	S00°18'47"E	167.13'
L21	S00°00'37"W	5.75'	L42	S89°41'13"W	7.83'

Ireland & Associates
Surveying, Inc.
Patrick K. Ireland, PSM 6637/LB 7623
800 Currency Circle Suite 1020
Lake Mary, Florida 32746
www.irelandsurveying.com
Office-407.678.3366
Fax-407.320.8165



- Legend-**
- -P.R.M. - Found Control Point
 - -P.R.M. - Permanent Reference Monument
- Set 4"x4" Concrete Monument LB# 7623
 - ⊕ - Centerline
 - N.T.S. - Not to Scale
 - CCR - Certified Corner Record
 - LB - Licensed Business
 - PSM - Professional Surveyor and Mapper
 - BB - Basis of Bearing

East 1/4 Corner of Section 02-23-29
Found Nail & Disc (JWG LB #1)
Certified Corner Record #109484

Parcel ID:
02-23-29-0000-00-054

Parcel ID:
02-23-29-0000-00-038

Southeast Corner of Section 02-23-29
Found Nail & Disc "JWG LB1 FDOT"
Certified Corner Record #096115