

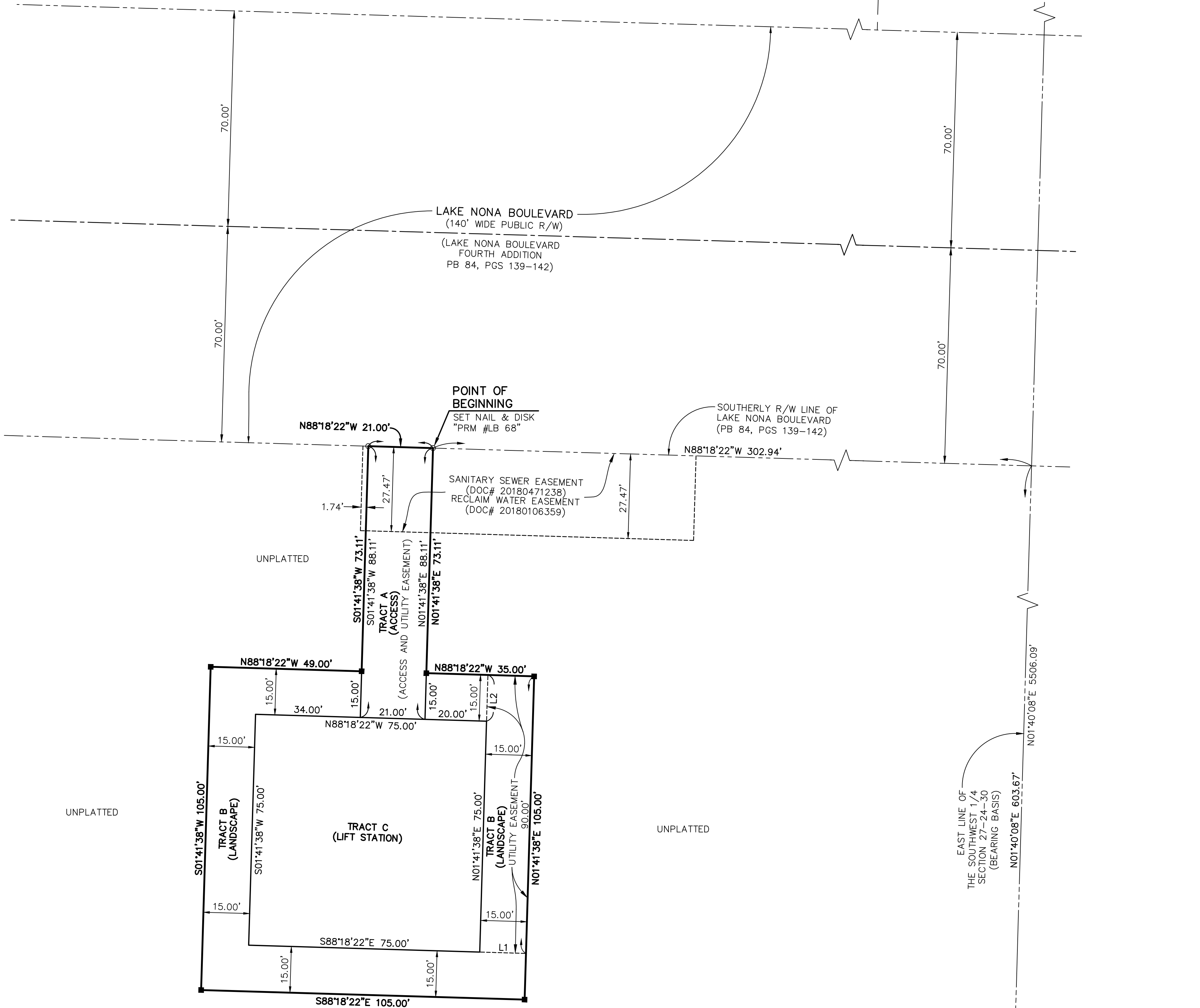
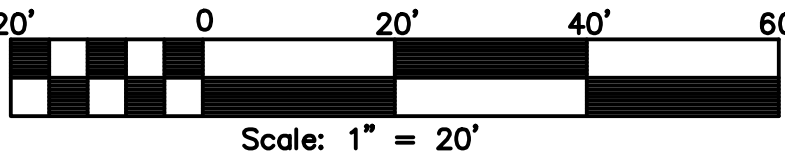
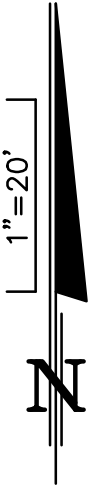
LAKE NONA SOUTH LIFT STATION NUMBER 9
A PORTION OF SECTION 27, TOWNSHIP 24 SOUTH, RANGE 30 EAST
CITY OF ORLANDO, ORANGE COUNTY, FLORIDA

PLAT
BOOK

PAGE

SHEET 2 OF 2

SEE SHEET 1 FOR LEGAL DESCRIPTION AND NOTES



LEGEND

(FOR ALL SHEETS)

- (NO#) = NO NUMBER
ID = IDENTIFICATION
L1 = LINE NUMBER (SEE LINE TABLE)
N&D = NAIL AND DISK
PRM = PERMANENT REFERENCE MONUMENT
R/W = RIGHT-OF-WAY
ORB = OFFICIAL RECORD BOOK
PB = PLAT BOOK
PG(S) = PAGE(S)
CM = CONCRETE MONUMENT
LB = LICENSED BUSINESS
LS = LICENSED SURVEYOR
PLS = PROFESSIONAL LAND SURVEYOR
CCR = CERTIFIED CORNER RECORD

SECTION 27-24-30 = SECTION 27, TOWNSHIP 24 SOUTH, RANGE 30 EAST

DOC# = OFFICIAL RECORDS DOCUMENT NUMBER OF THE PUBLIC RECORDS OF ORANGE COUNTY, FLORIDA.

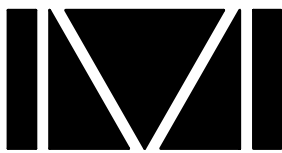
= DENOTES PERMANENT REFERENCE MONUMENT
(SET 4"x4" CONCRETE MONUMENT PRM #LB 68 UNLESS OTHERWISE NOTED) PER CHAPTER 177, FLORIDA STATUTES.

= DENOTES PERMANENT REFERENCE MONUMENT
(SET NAIL & DISK PRM #LB 68 UNLESS OTHERWISE NOTED)

THE FEATURES AND LINEWORK SHOWN HEREON ARE IN GRID POSITION RELATIVE TO FLORIDA STATE PLANE COORDINATE SYSTEM, FLORIDA EAST ZONE, 1983 NORTH AMERICAN DATUM, 2011 ADJUSTMENT AVERAGE COMBINED FACTOR: 0.99994883912 (1.00005116349757). ALL DIMENSIONS ARE GRID DIMENSIONS IN U.S. SURVEY FEET. SEE NOTE 3 ON SHEET 1 FOR ADDITIONAL INFORMATION.

NOTICE: THIS PLAT, AS RECORDED IN ITS GRAPHIC FORM, IS THE OFFICIAL DEPICTION OF THE SUBDIVIDED LANDS DESCRIBED HEREIN AND WILL IN NO CIRCUMSTANCES BE SUPPLANTED IN AUTHORITY BY ANY OTHER GRAPHIC OR DIGITAL FORM OF THE PLAT. THERE MAY BE ADDITIONAL RESTRICTIONS THAT ARE NOT RECORDED ON THIS PLAT THAT MAY BE FOUND IN THE PUBLIC RECORDS OF THIS COUNTY.

PREPARED BY:



DONALD W. MCINTOSH ASSOCIATES, INC.
ENGINEERS PLANNERS SURVEYORS
1950 SUMMIT PARK DRIVE SUITE 600, ORLANDO, FL 32810 (407) 644-4068

CERTIFICATE OF AUTHORIZATION NUMBER LB68

LINE TABLE		
NUMBER	BEARING	DISTANCE
L1	S88°18'22"E	15.00'
L2	N01°41'38"E	15.00'