

AMENDMENT IX ENGINEERING SERVICES AGREEMENT

THIS AMENDMENT (“Amendment IX”) is made and entered into this _____ day of _____, 20____, by and between the **City of Orlando, Florida**, a municipal corporation existing under the laws of the State of Florida (CITY), **Tetra Tech, Inc.**, and doing business locally at 201 East Pine Street, Suite 1000, Orlando, Florida 32801 (ENGINEER).

WHEREAS, the CITY and the ENGINEER have previously entered into an agreement for the ENGINEER's professional services (Agreement) on December 16, 2016, concerning the Wastewater Force Main System Evaluation Project (Project); and

WHEREAS, the CITY and the ENGINEER previously amended the Agreement effective on May 7, 2018 (“Amendment I”) and

WHEREAS, the CITY and the ENGINEER previously amended the Agreement effective on March 21, 2019 (“Amendment II”) and

WHEREAS, the CITY and the ENGINEER previously amended the Agreement effective on July 29, 2019 (“Amendment III”) and

WHEREAS, the CITY and the ENGINEER previously amended the Agreement effective on November 23, 2020 (“Amendment IV”) and

WHEREAS, the CITY and the ENGINEER previously amended the Agreement effective on January 4, 2021 (“Amendment V”) and

WHEREAS, the CITY and the ENGINEER previously amended the Agreement effective on April 22, 2022 (“Amendment VI”) and

WHEREAS, the CITY and the ENGINEER previously amended the Agreement effective on May 9, 2022 (“Amendment VII”) and

WHEREAS, the CITY and the ENGINEER previously amended the Agreement effective on January 10, 2023 (“Amendment VIII”) and

WHEREAS, the CITY and the ENGINEER wish to further amend the Agreement as set forth herein; and

WHEREAS, the CITY and the ENGINEER now wish to memorialize their understanding for the ENGINEER's additional professional services for the Project.

NOW, THEREFORE, in consideration of the mutual promises and covenants contained herein and given one to the other, the sufficiency of which is hereby acknowledged, the parties agree as follows:

I. SCOPE OF SERVICES

The scope of services for the additional services to be provided by ENGINEER has been agreed to by the parties, and is attached hereto and incorporated herein, by reference, as APPENDIX I.

II. FEE

The not-to-exceed fee of \$509,488.00 plus owner-controlled contingency of \$250,000.00 for a total fee of \$759,488.00 has been agreed to by the parties, as set forth on APPENDIX I.

III. TERM

ENGINEER shall complete all work in accordance with the timeframes set forth in the scope of work, if any, provided, however, that all work and the term of the Services Authorization shall be completed by the end of business (5:00 p.m.) forty-one (41) weeks from issuance of Notice to Proceed. It is also agreed that the CITY shall have an option for extension of this Amendment as necessary to complete the present scope of services (APPENDIX I) or to provide additional services.

IV. ENTIRE AGREEMENT

This Amendment issued pursuant to the Agreement supersedes all previous services authorizations, amendments, agreements, or representations, either verbal or written, heretofore in effect between the CITY and the ENGINEER that may have concerned the matters covered herein, except that this Amendment shall in no way supersede or amend the Agreement or other services authorizations or amendments issued thereunder except as specifically provided herein. No additions, alterations, or variations to the terms of this Amendment shall be valid, nor can the provisions of this Amendment be waived by either party, unless such additions, alterations, or waivers are expressly set forth in writing in a document duly executed by both parties. ENGINEER acknowledges and agrees that any proposals or proposed agreements from subconsultants attached to this AMENDMENT are attached solely to reflect the scopes of work to be performed and the fees to be charged by such subconsultants. By executing this AMENDMENT, the CITY does not become a party thereto or bound by the terms thereof.

IN WITNESS WHEREOF, the parties hereto have executed this Amendment on the day and year first written above.

City of Orlando, Florida

By: _____
David Billingsley, CPSM, C.P.M.
Chief Procurement Officer

_____, 20_____

APPROVE AS TO FORM AND LEGALITY
for the use and reliance of the
City of Orlando, Florida, only.

_____, 20_____.

Michael O'Dowd
Assistant City Attorney
Orlando, Florida

Tetra Tech, Inc.

By: _____

(Print Name)

Title: _____

Date: _____, 20____

STATE OF FLORIDA }

COUNTY OF _____ }

The foregoing instrument was acknowledged before me by means of physical presence or online notarization, this ____ day of _____, 20____, by _____ (name of person) as _____ (type of authority, (e.g., officer, trustee, attorney in fact, etc.) for _____ (name of entity/party on behalf of whom instrument was executed).

Signature of Notary Public – State of Florida
Print, Type, or Stamp Notary Name: _____

(Affix Notary Stamp or Seal Above)

___ Personally Known or ___ Produced Identification
Type of Identification Produced _____

ATTACHMENT A

SCOPE OF SERVICES

ENGINEERING SERVICES FOR WASTEWATER FORCE MAIN SYSTEM, AMENDMENT #9 LIFT STATION #2 FORCE MAIN, PHASE 1 REBID

DESCRIPTION OF PROJECT

A. BACKGROUND AND PROJECT DESCRIPTION

The City of Orlando's wastewater transmission system serving the downtown and east Orlando service area was initially constructed in 1949 to direct wastewater to the then Wastewater Treatment Plant (WWTP) located at Bennett Road, north of Colonial Drive. The system constructed in 1949 included Lift Stations (LS) 1, 2, 3 and 4 and is the backbone transmission system that has served the City for over 70 years. The initial scope of services included the preliminary engineering phase with the following tasks: Service Area Growth and Flow Analysis; Force Main Hydraulic Analysis, Alternative Route Analysis, and Preliminary Design Memorandums summarizing the analysis performed, recommended improvements, phasing plan and estimated costs. Amendment #9, for which this scope encompasses will include the re-bid of the LS 2 FM Phase 1 project broken into three (3) smaller more manageable packages for bidding and construction. A summary of the Amendments is included below:

Amendment #1 – Lift Station 2 Force Main

Amendment #1 included the final design, permitting, bidding and construction services for 11,100 feet of new 20-inch, 24-inch, 30-inch and 36-inch force mains between LS #2 and a connection point to the existing 30-inch force main on Illinois Street at Palm Drive. The project corridor begins at LS #2 located at Legion Place and runs south to N. Garland Avenue, east along N. Garland Avenue to Orange Avenue, south across the railroad tracks to Weber Street, northeasterly along Weber Street, north on Magnolia Avenue, east along the Urban Trail corridor, east on Lake Highland Drive, south along Thornton Avenue, east on Canton Street to Hampton Avenue, south on Hampton Avenue to Weber Street and then Palm Drive to Illinois Street.

Amendment #2 – OUC Water Main and Raw Water Main JPA

Orlando Utilities Commission (OUC) requested a Joint Project Agreement (JPA) with the City for potable water main (WM) and raw water main (RWM) improvements within the project corridor and extending to specific areas outside of the City's improvements corridor in order to facilitate the OUC water system connectivity. The work consisted of removal and replacement of 8,800 feet of WM from 16 to 30-inch in diameters; removal and replacement of 2,350 feet of 20-inch RWM; 900 feet of new 16-inch WM; 3,715 feet of new 30-inch WM; jack and bore of 80 feet of 16-inch WM with 30-inch steel casing; jack and bore of 80 feet of 20-inch RWM with 36-inch steel casing; jack and bore of 80 feet of 30-inch WM with 48-inch steel casing; fire hydrants; stub-outs; water service connections and reconnections; and abandonment of out of service mains via grout filling. Additional surveying (3,000 Feet) was completed with the above improvements and was paid for

under a separate contract with OUC to allow the project to continue during the process of developing the JPA.

Amendment #3 – OUC Electrical Transmission Duct Bank JPA

OUC requested a JPA to incorporate 6,000 feet of 230-kV duct bank and manholes within the project corridor from the new OUC substation and extending east along Lake Highland Dr., south on N. Thornton Avenue and east along Canton Street. The duct then continues south on N. Fern Creek Avenue outside the project limits. The OUC electrical duct bank will be designed, permitted, and have construction oversight by another consulting engineer on behalf of OUC Electric. Tetra Tech incorporated the OUC electrical duct bank drawings and specifications into the construction documents for bidding as one project. At OUC's direction, these improvements were later removed from the project and the water main route was revised to be routed on Marks Street and Orange Avenue using the remaining funds in this task.

Amendment #4 OUC Water Main Amendments

During the 75% review comment stage of the project, OUC requested additional water main extensions and other modifications to the project which required additional surveying, utility designations, pipe diameter modifications to plan and profile sheets and other associated adjustments per redlines and comments provided by OUC. Additional limits requested by OUC include 600 feet of additional surveying from the Urban Trail north to Lake Ivanhoe ROW and on Lake Highland Drive from east of N. Thornton Avenue to the western ROW of N. Mills Avenue. The OUC portion of Amendment 4 was funded from the project contingency.

Amendment #5

Phase 2 of the Lift Station 2 Force Main: The scope of Amendment #5 will continue the force main system from the end of the LS 2 Force Main to Lift Station 248 at Bennett Road. The project includes 7,900 feet of 36-inch force main. There are no OUC improvements with this amendment.

Amendment #6

The City's portion of Amendment #6 includes revisions to the design documents for removing the force main and sewer along Weber Street for construction with the Urban Trail project, storm system improvements coordination for the CDM project and other revisions related to PVC pipe thickness, ARV changes, and changes at the Garden Plaza Roundabout.

The OUC portion of Amendment #6 includes adding the OUC 230 kV duct banks back into the project and readjusting utilities to resolve conflicts, adding OUC fiber optic (FO) conduits and pull boxes along the raw water main routes, water main cathodic protection details and specifications additions, additional changes to the water main drawings and specifications requested by OUC after the bid set was produced, and coordination for the Carollo Orange Avenue projects. See Attachment B for the OUC Scope of Services for this Amendment.

Amendment #7

Amendment #7 includes adding additional information regarding road restoration along Canton St., Thornton Ave., Hampton Ave., Weber St., Garden Plaza and portions of the Urban Trail.

Amendment #8

Amendment #8 modified the limits of Phase 2 of the LS 2 Force Main (Amendment #5). The new force main will now be routed along McCullough Ave between Maguire Blvd and Fox Street, then east on Fox Street to LS 248. In addition, the two (2) existing force mains (30” and 36”) that cross near the south end of Herndon Ave will be extended north to Fox Street, then east along Fox Street to LS 248. This amendment will add 2,100 feet of 30-inch force main and 1,300 feet of 36” force main to the project. The existing force mains will be grout filled and abandoned in place. In addition, a topographic survey and collection of subsurface utility data will be performed at LS 46 for use by the City in connecting the LS 46 discharge force main to the new force main system as a separate project.

Amendment #9

Bids for the LS 2 FM Phase 1 project were opened on April 13, 2023. The City and its project partners canceled the bid and intend to make modifications to the project before it is rebid. This Amendment includes modifications to the design of the project and breaks the project into three (3) smaller more manageable packages for bidding and construction. The proposed bid packages are shown below.

- Part A: Garland Ave. and Marks St. east to Lake Highland Dr. and Ferris Ave. Intersection
- Part B: Lake Highland Ave. and Ferris St. Intersection east to Canton St. and N. Fern Creek Ave Intersection
- Part C: Canton St. and N. Fern Creek Ave Intersection east to the Garden Plaza terminus.

SCOPE OF SERVICES

PART A: GARLAND AVE. AND MARKS ST. EAST TO LAKE HIGHLAND AVE. AND FERRIS AVE. INTERSECTION

TASK 1 – PROJECT MANAGEMENT

Tetra Tech will provide project management and coordination for the project duration through bidding and award including: 1) Oversight of the project including documentation of key project tasks, invoicing, and status reports, 2) coordination with City, OUC, Power Engineers and other stakeholders via meetings, email, and phone conversations to respond to questions, provide regular project updates, and discuss planning activities and other project requirements, and 3) Providing City schedule updates identifying key deliverables and milestones.

TASK 2 – SURVEY AND SUE (No Additional Services)

TASK 3 – GEOTECHNICAL SERVICES (No Additional Services)

TASK 4 - FINAL DESIGN

Task 4.1 Construction Documents

Tetra Tech will update the construction documents including engineering drawings and specifications and submit to the City and OUC for review at 95% and 100% completion levels. The 95% plans and technical specifications will be updated based on the breakdown of the project

as described above. The 100% plans and specifications will include updates and modifications to the 95% submittal based on comments received from the City and OUC.

For Part A, Tetra Tech has estimated four (4) general sheets, twelve (12) survey and control sheets, thirteen (13) wastewater plan and profile drawings, sixteen (16) water plan and profile drawings, twelve (12) SWPPP plan sheets, twenty-five (25) MOT plan sheets, one (1) OUC Fiber Optic plan and detail drawing, eleven (11) pavement restoration plan sheets and twelve (12) detail drawings. This Part will also include 65 drawings for the Alden Road and Lake Highland Drive Realignment and 10 drawings for the OUC 230kv Power Transmission Line. Tetra Tech will coordinate with OUC Duct Bank and the Alden Road and Lake Highland Drive projects to incorporate into the project design.

Division 1 through 15 Contract Specifications will be revised for inclusion with the City of Orlando's Front-End Bidding Documents (Division 0). Cover page, Table of Contents, Bid Form, Measurement and Payment, Summary of Work and other sections as appropriate will be updated based on any design changes for each Part.

Task 4.2 Utility Data and Coordination

Tetra Tech will coordinate with utility companies potentially affected by the proposed utilities and submit a pdf version of the 95% construction drawings with an email requesting markups or verification of utilities affected by the construction. This coordination will include follow-up calls and emails which will be documented and filed for future use as needed. Tetra Tech will coordinate and summarize two (2) meetings or conference calls including the City and OUC for coordination with utility companies in the project corridor as applicable. Should an existing utility be required to relocate as a result from this coordination, a utility work schedule will be required by the Utility Owner/Agency (UAO).

Task 4.3 Maintenance of Traffic (MOT)

Tetra Tech's subconsultant, Civil/Site Engineering, Inc. (CSEI), will update the Maintenance of Traffic Control Plans. MOT plans will include detail sheets for work within major roadways and crossings, including lane closures, taper lengths, lane shifts, sign spacing, and channelizing device spacing as required. Detour plans for work within low traffic residential neighborhood streets will be developed and referenced on the overall MOT aerial map. Additionally, the maintenance of traffic control plans will address pedestrian sidewalk closures, trails and bike route detours, allowable on-street parking within the immediate vicinity of the worksite, and access to buildings immediately adjacent to work site and driveways blocked by construction activities as applicable. An update of the cost estimate for MOT will be provided at the 100% submittal.

Task 4.4 Stormwater Pollution Prevention Plans (SWPPP)

Tetra Tech will use the previously prepared Stormwater Pollution Prevention Plans and update those sheets and specifications with the project limits. The general and detail sheets will be included in each bidding package.

Task 4.5 QA/QC and Submittals

Tetra Tech will submit to the City and OUC for review at 95% and 100% completion levels and provide quality assurance and constructability review prior to all submittals to the City. Tetra Tech

will provide copies of the City and OUC review comments and their origin with each submittal. The design team will attend design review meetings with the City and OUC at each completion level. Tetra Tech will prepare an update to the Engineer's Opinion of Probable Construction Cost at the 100% design stage. At each submittal stage, Tetra Tech will provide three (3) paper copy sets of drawings and specifications and a copy in electronic format of the drawings, specifications in PDF format and Engineer's Opinion of Probable Construction Cost in Microsoft Excel and PDF formats.

TASK 5 – PERMITTING

FDEP Permits: Additions to OUC raw and finished water mains within Part A will require modification to existing specific permit 0025192-2292-DS. Tetra Tech will prepare and submit a modification to this permit and respond to RAI's. It is anticipated that the FDEP wastewater permits will not need to be revised and after construction each Part will be certified complete to FDEP based on the current issued permits for the project.

FDOT Permits: Tetra Tech will prepare and submit updates to the FDOT permit applications with the revised MOT plans and other supporting documentation. The selected contractor will complete the applications and submit to FDOT for final approvals.

City SWPP Permit: Tetra Tech will prepare and submit updates to the SWPPP permit applications with the revised plans and supporting documentation

Permit application fees will be paid by the City as appropriate unless specified to be paid by the selected contractor.

TASK 6 – PUBLIC RELATIONS AND MEETINGS (No Additional Services)

Currently there are no community meetings or coordination meetings expected with the public for this Part.

Task 7 - BIDDING ASSISTANCE

Upon authorization to proceed with the bidding and award phase of the project, Tetra Tech will perform the following services.

1. Furnish the City and OUC with an electronic set of bid drawings and technical specifications for distribution by the City.
2. Attend a pre-bid conference conducted by the City to describe the project and answer any technical questions from prospective bidders.
3. Provide written responses and clarifications to the City's Project Manager based on questions raised by prospective bidders. Prepare draft addenda, as approved by the City, containing technical revisions that become apparent during the bidding phase. The City will issue the addendums as required.

4. Prepare a bid tabulation and assist the City in evaluating bids and bidders and make a recommendation for the award of the project.
5. Incorporate into the construction documents any revisions and clarifications that occurred during the bidding phase and all City (Purchasing) required and Contractor executed documents. Tetra Tech will be responsible for Conforming Contract Drawings, and will assist, as necessary, the City's Project Manager and Purchasing Agent in the development of the Conformed Project Manual. Submit four (4) paper copies and a signed and sealed electronic copy of the conformed set of Contract Documents for the City, one (1) electronic set to OUC, and one (1) electronic set to the Contractor.

PART B: FROM LAKE HIGHLAND DR AND FERRIS AVE INTERSECTION EAST TO CANTON AND FERN CREEK INTERSECTION

TASK 1 – PROJECT MANAGEMENT

Tetra Tech will provide project management and coordination for the project duration through bidding and award including: 1) Oversight of the project including documentation of key project tasks, invoicing, and status reports, 2) coordination with City, coordination with Power Engineers on the duct bank design, and other stakeholders via meetings, email, and phone conversations to respond to questions, provide regular project updates, and discuss planning activities and other project requirements, and 3) Providing City schedule updates identifying key deliverables and milestones.

TASK 2 – SURVEY AND SUE (No Additional Services)

TASK 3 – GEOTECHNICAL SERVICES (No Additional Services)

TASK 4 FINAL DESIGN

Task 4.1 Construction Documents

Tetra Tech will update the construction documents including engineering drawings and specifications and submit to the City and OUC for review at 95% and 100% completion levels. The 95% plans and technical specifications will be updated based on the breakdown of the project as described above. The 100% plans and specifications will include updates and modifications to the 95% submittal based on comments received from the City and OUC.

For Part B, Tetra Tech has estimated four (4) general sheets, six (6) survey and control sheets, eleven (11) wastewater plan and p. ile drawings, thirteen (13) water plan and profile drawings, seven (7) SWPPP plan sheets, ten (10) MOT plan sheets, twelve (12) pavement restoration and reconstruction plan sheets, four (4) sheets for the Canton St. and Shine Ave. Drainage Improvements, and twelve (12) detail sheets. This Part will also include 65 drawings for the Alden Road and Lake Highland Drive Realignment and 10 drawings for the OUC 230kv Power Transmission Line. Tetra Tech will coordinate with OUC Duct Bank and the Alden Road and Lake Highland Drive projects to incorporate into the project design.

Division 1 through 15 Contract Specifications will be revised for inclusion with the City of Orlando's Front-End Bidding Documents (Division 0). Cover page, Table of Contents, Bid Form, Measurement and Payment, Summary of Work and other sections as appropriate will be updated based on any design changes for each Part.

Task 4.2 Utility Data and Coordination

Tetra Tech will coordinate with utility companies potentially affected by the proposed utilities and submit a pdf version of the 95% construction drawings with an email requesting markups or verification of utilities affected by the construction. This coordination will include follow-up calls and emails which will be documented and filed for future use as needed. Tetra Tech will coordinate and summarize two (2) meetings or conference calls including the City and OUC for coordination with utility companies in the project corridor as applicable. Should an existing utility be required to relocate as a result from this coordination, a utility work schedule will be required by the Utility Owner/Agency (UAO).

Task 4.3 Maintenance of Traffic (MOT)

Tetra Tech's subconsultant, Civil/Site Engineering, Inc. (CSEI), will update the Maintenance of Traffic Control Plans. MOT plans will include detail sheets for work within major roadways and crossings, including lane closures, taper lengths, lane shifts, sign spacing, and channelizing device spacing as required. Detour plans for work within low traffic residential neighborhood streets will be developed and referenced on the overall MOT aerial map. Additionally, the maintenance of traffic control plans will address pedestrian sidewalk closures, trails and bike route detours, allowable on-street parking within the immediate vicinity of the worksite, and access to buildings immediately adjacent to work site and driveways blocked by construction activities as applicable. An update of the cost estimate for MOT will be provided at the 100% submittal.

Task 4.4 Stormwater Pollution Prevention Plans (SWPPP)

Tetra Tech will use the previously prepared Stormwater Pollution Prevention Plans and update those sheets and specifications with the project limits. The general and detail sheets will be included in each bidding package.

Task 4.5 QA/QC and Submittals

Tetra Tech will submit to the City and OUC for review at 95% and 100% completion levels and provide quality assurance and constructability review prior to all submittals to the City. Tetra Tech will provide copies of the City and OUC review comments and their origin with each submittal. The design team will attend design review meetings with the City and OUC at each completion level. Tetra Tech will prepare an update to the Engineer's Opinion of Probable Construction Cost at the 100% design stage. At each submittal stage, Tetra Tech will provide three (3) paper copy sets of drawings and specifications and a copy in electronic format of the drawings, specifications in PDF format and Engineer's Opinion of Probable Construction Cost in Microsoft Excel and PDF formats.

TASK 5 – PERMITTING

FDEP Permits: It is anticipated that the FDEP water and wastewater permits will not need to be revised and after construction each Part will be certified complete to FDEP based on the current issued permits for the project.

FDOT Permits: Tetra Tech will prepare and submit updates to the FDOT permit applications with the revised MOT plans and other supporting documentation. The selected contractor will complete the applications and submit to FDOT for final approvals.

City SWPP Permit: Tetra Tech will prepare and submit updates to the SWPPP permit applications with the revised plans and supporting documentation

Permit application fees will be paid by the City as appropriate unless specified to be paid by the selected contractor.

TASK 6 – PUBLIC RELATIONS AND MEETINGS (No Additional Services)

Currently there are no community meetings or coordination meetings expected with the public.

Task 7 - BIDDING ASSISTANCE

Upon authorization to proceed with the bidding and award phase of the project, Tetra Tech will perform the following services.

1. Furnish the City and OUC with an electronic set of bid drawings and technical specifications for distribution by the City.
2. Attend a pre-bid conference conducted by the City to describe the project and answer any technical questions from prospective bidders.
3. Provide written responses and clarifications to the City's Project Manager based on questions raised by prospective bidders. Prepare draft addenda, as approved by the City, containing technical revisions that become apparent during the bidding phase. The City will issue the addendums as required.
4. Prepare a bid tabulation and assist the City in evaluating bids and bidders and make a recommendation for the award of the project.
5. Incorporate into the construction documents any revisions and clarifications that occurred during the bidding phase and all City (Purchasing) required and Contractor executed documents. Tetra Tech will be responsible for Conforming Contract Drawings, and will assist, as necessary, the City's Project Manager and Purchasing Agent in the development of the Conformed Project Manual. Submit four (4) paper copies and a signed and sealed electronic copy of the conformed set of Contract Documents for the City and one (1) electronic set to the Contractor.

PART C: CANTON ST. AND N. FERN CREEK AVE. INTERSECTION EAST TO THE GARDEN PLAZA TERMINUS.

TASK 1 – PROJECT MANAGEMENT

Tetra Tech will provide project management and coordination for the project duration through bidding and award including: 1) Oversight of the project including documentation of key project tasks, invoicing, and status reports, 2) coordination with City and other stakeholders via meetings, email, and phone conversations to respond to questions, provide regular project updates, and discuss planning activities and other project requirements, and 3) Providing City schedule updates identifying key deliverables and milestones.

TASK 2 – SURVEY AND SUE (No Additional Services)

TASK 3 – GEOTECHNICAL SERVICES (No Additional Services)

TASK 4 FINAL DESIGN

Task 4.1 Construction Documents

Tetra Tech will update the construction documents including engineering drawings and specifications and submit to the City for review at 95% and 100% completion levels. The 95% plans and technical specifications will be updated based on the breakdown of the project as described above. The 100% plans and specifications will include updates and modifications to the 95% submittal based on comments received from the City and OUC.

For Part C, Tetra Tech has estimated four (4) general sheets, seven (7) survey and control sheets, eleven (11) wastewater plan and profile drawings, twelve (12) water plan and profile drawings, eight (8) SWPPP plan sheets, nine (9) MOT plan sheets, seventeen (17) pavement restoration plan sheets and twelve (12) detail drawings.

Division 1 through 15 Contract Specifications will be revised for inclusion with the City of Orlando's Front-End Bidding Documents (Division 0). Cover page, Table of Contents, Bid Form, Measurement and Payment, Summary of Work and other sections as appropriate will be updated based on any design changes for each Part.

Task 4.2 Utility Data and Coordination

Tetra Tech will coordinate with utility companies potentially affected by the proposed pipeline alignment to obtain utility facility data and submit a pdf version of the 95% construction drawings to the utilities with an email or letter requesting markups or verification of utilities not affected. This coordination will include follow-up calls and emails which will be documented and filed for future use as needed. Adjustments to the proposed utilities are not required within Part C, and therefore, Tetra Tech does not expect that detailed utility coordination meetings will be necessary for preparation of this bid package.

Task 4.3 Maintenance of Traffic (MOT)

Tetra Tech's subconsultant, Civil/Site Engineering, Inc. (CSEI), will update the Maintenance of Traffic Control Plans. MOT plans will include detail sheets for work within major roadways and crossings, including lane closures, taper lengths, lane shifts, sign spacing, and channelizing device spacing as required. Detour plans for work within low traffic residential neighborhood streets will be developed and referenced on the overall MOT aerial map. Additionally, the maintenance of traffic control plans will address pedestrian sidewalk closures, trails and bike route detours, allowable on-street parking within the immediate vicinity of the worksite, and access to buildings immediately adjacent to work site and driveways blocked by construction activities as applicable. An update of the cost estimate for MOT will be provided at the 100% submittal.

Task 4.4 Stormwater Pollution Prevention Plans (SWPPP)

Tetra Tech will use the previously prepared Stormwater Pollution Prevention Plans and update those sheets and specifications with the project limits. The general and detail sheets will be included in each bidding package.

Task 4.5 QA/QC and Submittals

Tetra Tech will submit to the City and OUC for review at 95% and 100% completion levels and provide quality assurance and constructability review prior to all submittals to the City. Tetra Tech will provide copies of the City's QA/QC comments and their origin with each submittal. The design team will attend design review meetings with the City at each completion level. Tetra Tech will prepare an update to the Engineer's Opinion of Probable Construction Cost at the 100% design stage. At each submittal stage, Tetra Tech will provide three (3) paper copy sets of drawings and specifications and a copy in electronic format of the drawings, specifications in PDF format and Engineer's Opinion of Probable Construction Cost in Microsoft Excel and PDF formats.

TASK 5 – PERMITTING

FDEP Permits: It is anticipated that the FDEP water and wastewater permits will not need to be revised and after construction each Part will be certified complete to FDEP based on the current issued permits for the project.

City SWPP Permit: Tetra Tech will prepare and submit updates to the SWPPP permit applications with the revised plans and supporting documentation

FDOT Permits: There are no FDOT utility permits required within the limits of the Part C project.

Permit application fees will be paid by the City as appropriate unless specified to be paid by the selected contractor.

TASK 6 – PUBLIC RELATIONS AND MEETINGS (No Additional Services)

Currently there are no community meetings or coordination meetings expected with the public.

Task 7 - BIDDING ASSISTANCE

Upon authorization to proceed with the bidding and award phase of the project, Tetra Tech will perform the following services.

1. Furnish the City and OUC with an electronic set of bid drawings and technical specifications for distribution by the City.
2. Attend a pre-bid conference conducted by the City to describe the project and answer any technical questions from prospective bidders.
3. Provide written responses and clarifications to the City’s Project Manager based on questions raised by prospective bidders. Prepare draft addenda, as approved by the City, containing technical revisions that become apparent during the bidding phase. The City will issue the addendums as required.
4. Prepare a bid tabulation and assist the City in evaluating bids and bidders and make a recommendation for the award of the project.
5. Incorporate into the construction documents any revisions and clarifications that occurred during the bidding phase and all City (Purchasing) required and Contractor executed documents. Tetra Tech will be responsible for Conforming Contract Drawings, and will assist, as necessary, the City’s Project Manager and Purchasing Agent in the development of the Conformed Project Manual. Submit four (4) paper copies and a signed and sealed electronic copy of the conformed set of Contract Documents for the City and one (1) electronic set to the Contractor.

MWBE PARTICIPATION

Tetra Tech has partnered with MBE firm Barnes Ferland and Associates (BFA) to provide survey and SUE and WBE firm CSEI for MOT design for the project as described in their attached proposals. Tetra Tech is fully committed to meeting the M/WBE participation goals for the contract. MWBE participation is summarized below:

Firm Participation	Fee (\$)	MWBE Percentage
Tetra Tech	\$ 468,500	
BFA (MBE – Survey)	-	0%
CSEI (WBE – MOT)	\$ 40,988	8.0%
Total	\$ 509,488	8.0%

OWNER'S CONTINGENCY

At the request of the City and OUC, owner-controlled contingency is included herein as follows:

Owner Contingency	Amount
City of Orlando	\$50,000
OUC Water	\$100,000
OUC Transmission	\$100,000
Total	\$250,000

COMPENSATION

The total not-to-exceed fee for the Scope of Services described above is \$509,488, plus owner controlled contingency of \$250,000. All fees reflect a multiplier of 3.00 pursuant to the requirements set forth in the Tetra Tech/City Agreement. Exhibit I presents a detailed breakdown of the estimated hours and compensation for the Scope of Services.

Compensation Summary

Task	Fee (\$)
Part A - Garland Ave. and Marks St. East to Lake Highland Ave. and Ferris Ave. Intersection	\$179,472
Part B - From Lake Highland Dr. and Ferris Ave. Intersection East to Canton and Fern Creek Intersection	\$175,680
Part C - Canton St. and N. Fern Creek Ave. Intersection East to the Garden Plaza Terminus	\$154,335
Subtotal	\$509,488
Owner Contingency	\$250,000
Total	\$759,488

SCHEDULE

Task	Duration (Weeks)	Weeks After Notice to Proceed
Part C - Bid Package Submittal	6	6
Part C - Award	13	19
Part A - Bid Package Submittal*	9	9
Part A – Award	13	22
Part B - Bid Package Submittal	6	28
Part B - Award	13	41

*Denotes concurrent work

EXHIBIT I
Price Proposal



Price Proposal

Amend 9 LS 2 FM Ph 1 Rebid

Amendment to divide the LS 2 FM Ph 1 project into three parts and rebid

Submitted to: Orlando Water Reclamation Division ()

Contract Type: T&M

Labor Plan

7 Resource

Project Phases / Tasks	Total Labor Hrs	Senior Project Manager (J. Jardell)	Proj. Eng. IV (A. Abarca)	Proj. Eng. III (S. Powers)	CAD Designer (M. Shumacher)	Senior Engineer (ADA and Road Restoration) (T. Vanderwalker)	Admin Assistant (P. Tobin)	Senior Engineer (EOR) (Janine Alexander)	Labor	Subs	Travel	ODCs	Task Pricing Totals
		2,855	396	489	701	879	148	210	32	461,101	45,086	1,650	1,650
Part A	956	127	163	219	322	35	74	16	153,305	25,067	550	550	179,472
Task 1 Project Management	58	42	4	4	-	-	8	-	11,778	-	-	-	11,778
Invoicing and Status Reports	18	12					6		3,403				3,403
Coordination Communications and Meetings	34	24	4	4			2		6,948				6,948
Schedule Updates	6	6							1,427				1,427
Task 2 Survey and SUE	-	-	-	-	-	-	-	-	-	-	-	-	-
Survey and SUE (BFA-MBE Sub)	-	-	-	-	-	-	-	-	-	-	-	-	-
Task 3 Geotechnical Services (No Additional Services)	-	-	-	-	-	-	-	-	-	-	-	-	-
(No Additional Services)	-	-	-	-	-	-	-	-	-	-	-	-	-
Task 4 Final Design	592	52	96	117	258	25	38	6	93,868	17,557	550	-	111,974
General (4 shfts)	16	1	3	-	12	-	-	-	2,733	-	550	-	3,283
Cover, Index, Notes and Legend	16	1	3		12				2,733		550		3,283
Survey and Control	14	-	2	-	12	-	-	-	2,358	-	-	-	2,358
Sheet Numbering (12)	14		2		12				2,358				2,358
Wastewater System	91	5	9	15	58	-	4	-	14,500	-	-	-	14,500
Key Map	3				3				518				518
P&P Sheets (13)	52	2	4	7	39				8,553				8,553
Detail sheets (4)	9		1		8				1,524				1,524
Specifications	10	1	2	4			3		1,236				1,236
Update Cost Estimates	17	2	2	4	8		1		2,669				2,669
Water System and Fiber Optic	156	7	22	30	93	-	4	-	24,562	-	-	-	24,562
Key Map	5		2		3				806				806
P&P Sheets (16)	98	4	12	18	64				15,719				15,719
Detail Sheets (5)	12		2		10				2,013				2,013
Meter and Backflow Schedule	9		2	3	4				1,316				1,316
Fiber Optic Plan and Detail Sheet	6			2	4				915				915
Specifications	9	1	2	3			3		1,124				1,124
Update Cost Estimates	17	2	2	4	8		1		2,669				2,669
Road Restoration and Reconstruction	91	5	9	22	33	18	4	-	14,817	-	-	-	14,817
Plan Sheets (11)	40	2	3	8	22	5			6,656				6,656
Detail Sheets (3)	8			2	3	3			1,383				1,383
Specifications	23	2	4	8		6	3		3,486				3,486
Update Cost Estimates	20	1	2	4	8	4	1		3,292				3,292
Stormwater Pollution Prevention Plans (SWPPP)	15	-	1	3	8	3	-	-	2,502	-	-	-	2,502
Plan Sheets (12)	15		1	3	8	3			2,502				2,502

Price Proposal

Amend 9 LS 2 FM Ph 1 Rebid

Amendment to divide the LS 2 FM Ph 1 project into three parts and rebid

Submitted to: Orlando Water Reclamation Division (

Contract Type: T&M

Labor Plan

7 Resource

Project Phases / Tasks	Total Labor Hrs	Senior Project Manager (J. Jardell)	Proj. Eng. IV (A. Abarca)	Proj. Eng. III (S. Powers)	CAD Designer (M. Shumacher)	Senior Engineer (ADA and Road Restoration) (T. Vanderwalker)	Admin Assistant (P. Tobin)	Senior Engineer (EOR) (Janine Alexander)	Labor	Subs	Travel	ODCs	Task Pricing Totals
		396	489	701	879	148	210	32	461,101	45,086	1,650	1,650	759,488
MOT Plans	5	-	-	1	4	-	-	-	803	-	-	-	803
Sheet Coordination and Nunbering	5			1	4				803				803
Alden Road and Lake Highland Drive	28	3	10	4	8	-	3	-	4,232	-	-	-	4,232
Drawing Coordination	19	3	8		8				3,226				3,226
Specifications Updates	9		2	4			3		1,005				1,005
OUC 230kv Power Transmission Line	22	3	10	4	2	-	3	-	3,197	-	-	-	3,197
Drawing Coordination	12	2	8		2				1,960				1,960
Specification Updates	10	1	2	4			3		1,236				1,236
Utility Coordination	52	10	12	22	4	-	4	-	7,559	-	-	-	7,559
Send Updated Plans to known Utilities	14		2	6	4		2		1,831				1,831
Followup Coordination	16	4	4	8					2,400				2,400
Coordinaiton Meetings (2)	22	6	6	8			2		3,328				3,328
Maintenance of Traffic	-	-	-	-	-	-	-	-	-	17,557	-	-	17,557
Maintenance of Traffic (CSEI - WBE Sub)	-								17,557				17,557
QA/QC and Submittals	102	18	18	16	24	4	16	6	16,604	-	-	-	16,604
QA/QC	38	12	4	4	8		8	2	6,433				6,433
95% Submittal and Review Meeting	34	4	8	4	8	4	4	2	5,662				5,662
100% Submittal	30	2	6	8	8		4	2	4,508				4,508
Task 5 Permitting	98	8	16	32	24	6	6	6	15,345	-	-	-	15,345
FDEP Permit Modification (OUC Water/Raw)	26	2	4	8	8		2	2	4,042				4,042
FDOT Permit Modifications	40	4	8	16	8		2	2	5,980				5,980
City SWPP Permit Modificatiosn	32	2	4	8	8	6	2	2	5,323				5,323
Task 6 Public Relations and Meetings (No Additional Services)	-	-	-	-	-	-	-	-	-	-	-	-	-
No Additional Services	-												
Task 7 Bidding Assistance	208	25	47	66	40	4	22	4	32,314	5,232	-	550	38,096
Furnish the City with Bid Documents	26	1	3	6	8		6	2	3,988			550	4,538
Pre-Bid Meeeing	8	4	4						1,575				1,575
Questions and Addendum Responses	92	12	24	32	16	2	6		14,229				14,229
Assist with Bid Evaluations	26	4	8	12			2		3,785				3,785
Prepare Conformed Construction Documents	56	4	8	16	16	2	8	2	8,737				8,737
MOT Bid Support (CSEI - WBE Sub)	-									5,232			5,232
Subconsultant Administration	-	-	-	-	-	-	-	-	-	2,279	-	-	2,279
Subconsultant Administration (10% of Sub Fees)	-								2,279				2,279



Price Proposal

Amend 9 LS 2 FM Ph 1 Rebid

Amendment to divide the LS 2 FM Ph 1 project into three parts and rebid

Submitted to: Orlando Water Reclamation Division (

Contract Type: T&M

Labor Plan

7 Resource

Project Phases / Tasks	Total Labor Hrs	Senior Project Manager (J. Jardell)	Proj. Eng. IV (A. Abarca)	Proj. Eng. III (S. Powers)	CAD Designer (M. Shumacher)	Senior Engineer (ADA and Road Restoration) (T. Vanderwalker)	Admin Assistant (P. Tobin)	Senior Engineer (EOR) (Janine Alexander)	Labor	Subs	Travel	ODCs	Task Pricing Totals
		2,855	396	489	701	879	148	210	32	461,101	45,086	1,650	1,650
Part B	994	134	171	248	302	54	77	8	163,949	10,631	550	550	175,680
Task 1 Project Management	58	42	4	4	-	-	8	-	12,002	-	-	-	12,002
Invoicing and Status Reports	18	12					6		3,468				3,468
Coordination Communications and Meetings	34	24	4	4			2		7,080				7,080
Schedule Updates	6	6							1,454				1,454
Task 2 Survey and SUE	-	-	-	-	-	-	-	-	-	-	-	-	-
Survey and SUE (BFA-MBE Sub)	-	-	-	-	-	-	-	-	-	-	-	-	-
Task 3 Geotechnical Services	-	-	-	-	-	-	-	-	-	-	-	-	-
(No Additional Services)	-	-	-	-	-	-	-	-	-	-	-	-	-
Task 4 Final Design	654	61	108	154	246	44	41	-	107,577	6,151	550	-	114,278
General (4 shts)	16	1	3	-	12	-	-	-	2,870	-	550	-	3,420
Cover, Index, Notes and Legend	16	1	3		12				2,870		550		3,420
Survey and Control	14	-	2	-	12	-	-	-	2,476	-	-	-	2,476
Sheet Numbering (6)	14		2		12				2,476				2,476
Wastewater System	100	6	13	28	49	-	4	-	15,979	-	-	-	15,979
P&P Sheets (11)	64	3	8	20	33				10,278				10,278
Detail sheets (4)	9		1		8				1,600				1,600
Specifications	10	1	2	4			3		1,298				1,298
Update Cost Estimates	17	2	2	4	8		1		2,802				2,802
Water System	139	7	17	39	72	-	4	-	22,292	-	-	-	22,292
P&P Sheets (13)	92	4	10	26	52				14,973				14,973
Detail Sheets (5)	21		3	6	12				3,337				3,337
Specifications	9	1	2	3			3		1,180				1,180
Update Cost Estimates	17	2	2	4	8		1		2,802				2,802
Road Restoration and Reconstruction	119	5	12	26	35	37	4	-	21,106	-	-	-	21,106
Plan Sheets (12)	68	2	6	12	24	24			12,537				12,537
Detail Sheets (3)	8			2	3	3			1,452				1,452
Specifications	23	2	4	8		6	3		3,660				3,660
Update Cost Estimates	20	1	2	4	8	4	1		3,457				3,457
Stormwater Pollution Prevention Plans (SWPPP)	15	-	1	3	8	3	-	-	2,627	-	-	-	2,627
Plan Sheets (7)	15		1	3	8	3			2,627				2,627
MOT Plans	5	-	-	1	4	-	-	-	843	-	-	-	843
Sheet Coordination and Numbering	5			1	4				843				843
Canton And Shine Ave Drainage	24	2	6	7	6	-	3	-	3,587	-	-	-	3,587
Drawing Coordination	16	2	4	4	6				2,650				2,650
Specifications Updates	8		2	3			3		938				938



Price Proposal

Amend 9 LS 2 FM Ph 1 Rebid

Amendment to divide the LS 2 FM Ph 1 project into three parts and rebid

Submitted to: Orlando Water Reclamation Division (

Contract Type: T&M

Labor Plan

7 Resource

Project Phases / Tasks	Total Labor Hrs	Senior Project Manager (J. Jardell)	Proj. Eng. IV (A. Abarca)	Proj. Eng. III (S. Powers)	CAD Designer (M. Shumacher)	Senior Engineer (ADA and Road Restoration) (T. Vanderwalker)	Admin Assistant (P. Tobin)	Senior Engineer (EOR) (Janine Alexander)	Labor	Subs	Travel	ODCs	Task Pricing Totals
		2,855	396	489	701	879	148	210	32	461,101	45,086	1,650	1,650
Alden Road and Lake Highland Drive	28	3	10	4	8	-	3	-	4,443	-	-	-	4,443
<i>Drawing Coordination</i>	19	3	8		8				3,388				3,388
<i>Specifications Updates</i>	9		2	4			3		1,056				1,056
OUC 230kv Power Transmission Line	42	5	14	8	12	-	3	-	6,731	-	-	-	6,731
<i>Drawing Coordination</i>	28	4	12		12				4,960				4,960
<i>Specification Updates</i>	14	1	2	8			3		1,770				1,770
Utility Coordination	52	10	12	22	4	-	4	-	7,937	-	-	-	7,937
<i>Send Updated Plans to known Utilities</i>	14		2	6	4		2		1,923				1,923
<i>Followup Coordination</i>	16	4	4	8					2,520				2,520
<i>Coordination Meetings (2)</i>	22	6	6	8			2		3,494				3,494
Maintenance of Traffic	-	-	-	-	-	-	-	-	-	6,151	-	-	6,151
<i>Maintenance of Traffic (CSEI - WBE Sub)</i>	-	-	-	-	-	-	-	-	-	6,151	-	-	6,151
QA/QC and Submittals	100	22	18	16	24	4	16	-	16,685	-	-	-	16,685
<i>QA/QC</i>	40	16	4	4	8		8		7,152				7,152
<i>95% Submittal and Review Meeting</i>	32	4	8	4	8	4	4		5,373				5,373
<i>100% Submittal</i>	28	2	6	8	8		4		4,161				4,161
Task 5 Permitting	74	6	12	24	16	6	6	4	12,055	-	-	-	12,055
<i>FDEP Permits (No additional Services)</i>	-	-	-	-	-	-	-	-	-	-	-	-	-
<i>FDOT Permit Modifications</i>	41	4	8	16	8		3	2	6,373				6,373
<i>City SWPP Permit Modifications</i>	33	2	4	8	8	6	3	2	5,682				5,682
Task 6 Public Relations and Meetings (No Additional Services)	-	-	-	-	-	-	-	-	-	-	-	-	-
<i>No Additional Services</i>	-	-	-	-	-	-	-	-	-	-	-	-	-
Task 7 Bidding Assistance	208	25	47	66	40	4	22	4	32,314	3,513	-	550	36,378
<i>Furnish the City with Bid Documents</i>	26	1	3	6	8		6	2	3,988			550	4,538
<i>Pre-Bid Meeting</i>	8	4	4						1,575				1,575
<i>Questions and Addendum Responses</i>	92	12	24	32	16	2	6		14,229				14,229
<i>Assist with Bid Evaluations</i>	26	4	8	12			2		3,785				3,785
<i>Prepare Conformed Construction Documents</i>	56	4	8	16	16	2	8	2	8,737				8,737
<i>MOT Bid Support (CSEI - WBE Sub)</i>	-	-	-	-	-	-	-	-	-	3,513	-	-	3,513
Subconsultant Administration (10% of Sub Fees)	-	-	-	-	-	-	-	-	-	966	-	-	966
<i>Subconsultant Administration</i>	-	-	-	-	-	-	-	-	-	966	-	-	966



Price Proposal

Amend 9 LS 2 FM Ph 1 Rebid

Amendment to divide the LS 2 FM Ph 1 project into three parts and rebid

Submitted to: Orlando Water Reclamation Division (

Contract Type: T&M

Labor Plan

7 Resource

Project Phases / Tasks	Total Labor Hrs	Senior Project Manager (J. Jardell)	Proj. Eng. IV (A. Abarca)	Proj. Eng. III (S. Powers)	CAD Designer (M. Shumacher)	Senior Engineer (ADA and Road Restoration) (T. Vanderwalker)	Admin Assistant (P. Tobin)	Senior Engineer (EOR) (Janine Alexander)	Labor	Subs	Travel	ODCs	Task Pricing Totals
		2,855	396	489	701	879	148	210	32	461,101	45,086	1,650	1,650
Part C	905	135	155	234	255	59	59	8	143,848	9,388	550	550	154,335
Task 1 Project Management	80	56	8	8	-	-	8	-	15,688	-	-	-	15,688
Invoicing and Status Reports	18	12					6		3,303				3,303
Coordination Communications and Meetings	54	36	8	8			2		10,539				10,539
Schedule Updates	8	8							1,846				1,846
Task 2 Survey and SUE	-	-	-	-	-	-	-	-	-	-	-	-	-
Survey and SUE (BFA-MBE Sub)	-	-	-	-	-	-	-	-	-	-	-	-	-
Task 3 Geotechnical Services (No Additional Services)	-	-	-	-	-	-	-	-	-	-	-	-	-
(No Additional Services)	-	-	-	-	-	-	-	-	-	-	-	-	-
Task 4 Final Design	604	58	100	160	211	49	26	-	94,978	6,495	550	-	102,023
General (4 shfts)	22	1	3	6	12	-	-	-	3,408	-	550	-	3,958
Cover, Index, Notes and Legend	22	1	3	6	12				3,408		550		3,958
Survey and Control	5	-	2	-	3	-	-	-	806	-	-	-	806
Sheet Numbering (7)	5		2		3				806				806
Wastewater System	124	13	22	37	48	-	4	-	18,972	-	-	-	18,972
Key Map	6		1	2	3				887				887
P&P Sheets (11)	65	5	10	17	33				10,201				10,201
Detail sheets (4)	7		1	2	4				1,059				1,059
Specifications	23	6	6	8			3		3,417				3,417
Update Cost Estimates	23	2	4	8	8		1		3,407				3,407
Water System and Fiber Optic	152	11	28	46	63	-	4	-	22,976	-	-	-	22,976
Key Map	7	1	1	2	3				1,118				1,118
P&P Sheets (12)	83	6	14	22	41				12,951				12,951
Detail Sheets (5)	8		1	2	5				1,232				1,232
Meter abd Backflow Schedule	12		2	4	6				1,773				1,773
Specifications	19	2	6	8			3		2,494				2,494
Update Cost Estimates	23	2	4	8	8		1		3,407				3,407
Road Restoration and Reconstruction	153	5	20	37	45	42	4	-	25,284	-	-	-	25,284
Plan Sheets (17)	93	4	10	17	34	28			16,120				16,120
Detail Sheets (3)	7			2	3	2			1,169				1,169
Specifications	26	1	6	8		8	3		3,971				3,971
Update Cost Estimates	27		4	10	8	4	1		4,025				4,025
Stormwater Pollution Prevention Plans (SWPPP)	15	-	1	3	8	3	-	-	2,502	-	-	-	2,502
Sheets (8)	15		1	3	8	3			2,502				2,502
MOT Plans	5	-	-	1	4	-	-	-	803	-	-	-	803
Sheet Coordination and Numbering (11)	5			1	4				803				803



Price Proposal

Labor Plan

7 Resource

Amend 9 LS 2 FM Ph 1 Rebid

Amendment to divide the LS 2 FM Ph 1 project into three parts and rebid

Submitted to: Orlando Water Reclamation Division (

Contract Type: T&M

Project Phases / Tasks	Total Labor Hrs	Senior Project Manager (J. Jardell)	Proj. Eng. IV (A. Abarca)	Proj. Eng. III (S. Powers)	CAD Designer (M. Shumacher)	Senior Engineer (ADA and Road Restoration) (T. Vanderwalker)	Admin Assistant (P. Tobin)	Senior Engineer (EOR) (Janine Alexander)	Labor	Subs	Travel	ODCs	Task Pricing Totals
	2,855	396	489	701	879	148	210	32	461,101	45,086	1,650	1,650	759,488
Utility Coordination	30	4	6	14	4	-	2	-	4,231	-	-	-	4,231
<i>Send Updated Plans to known Utilities</i>	14		2	6	4		2		1,831				1,831
<i>Followup Coordination</i>	16	4	4	8					2,400				2,400
<i>Coordinaiton Meetings (not included)</i>	-												-
Maintenance of Traffic	-	-	-	-	-	-	-	-	-	6,495	-	-	6,495
<i>Maintenance of Traffic (CSEI - WBE Sub)</i>	-									6,495			6,495
QA/QC and Submittals	98	24	18	16	24	4	12	-	15,996	-	-	-	15,996
<i>QA/QC</i>	38	18	4	4	8		4		6,917				6,917
<i>95% Submittal and Review Meeting</i>	32	4	8	4	8	4	4		5,117				5,117
<i>100% Submittal</i>	28	2	6	8	8		4		3,963				3,963
Task 5 Permitting	35	2	4	8	8	6	3	4	5,957	-	-	-	5,957
<i>FDEP Permits (No additional Services)</i>	2							2	545				545
<i>City SWPP Permit (Modifications)</i>	33	2	4	8	8	6	3	2	5,412				5,412
Task 6 Public Relations and Meetings (No Additional Services)	-	-	-	-	-	-	-	-	-	-	-	-	-
<i>No Additional Services</i>	-												-
Task 7 Bidding Assistance	186	19	43	58	36	4	22	4	27,224	2,039	-	550	29,814
<i>Furnish the City with Bid Documents</i>	26	1	3	6	8		6	2	3,798			550	4,348
<i>Pre-Bid Meeeing</i>	8	4	4						1,500				1,500
<i>Questions and Addendum Responses</i>	70	6	20	24	12	2	6		10,000				10,000
<i>Assist with Bid Evaluations</i>	26	4	8	12			2		3,605				3,605
<i>Prepare Conformed Construction Documents</i>	56	4	8	16	16	2	8	2	8,321				8,321
<i>MOT Bid Support (CSEI - WBE Sub)</i>	-									2,039			2,039
Subconsultant Administration	-	-	-	-	-	-	-	-	-	853	-	-	853
<i>Subconsultant Administration (10% of Sub Fees)</i>	-									853			853
Owner's Contingency	-	-	-	-	-	-	-	-	-	-	-	-	-
<i>OUC Water (\$100,000)</i>	-												100,000
<i>OUC Transmission (100,000)</i>	-												100,000
<i>City of Orlando (\$50,000)</i>	-												50,000
Totals	2,855	396	489	701	879	148	210	32	461,101	45,086	1,650	1,650	759,488



Scope of Services

Client Information: Tetra Tech, Inc. (US Based Operations)
201 East Pine Street, Suite 1000, Orlando, FL 32801

Date: October 16, 2023

CSEI Proj #: 16011-AMD7

Project Name: City of Orlando/OUC JPA
LS2 FM and OUC Water Mains Project
Phase 1 – LS No.2 to POC
Re-Bid/Bid Package Division
(Amendment #7)

Engineering Consultant: Civil/Site Engineering, Inc.
1645 N. Maitland Avenue
Maitland, FL 32751

I. DESCRIPTION OF PROJECT:

The original LS2 to POC Force Main project scope (Amendment #1) consisted of designing new 20-inch, 24-inch, 30-inch and 36-inch force mains between Lift Station No. 2 and a connection point to the existing 30-inch force main on Illinois Street at Palm Drive (POC). The project corridor begins at Lift Station 2 located in the parking garage at Legion Place and runs south to N. Garland Avenue, east along N. Garland Avenue to Orange Avenue, south across the railroad tracks to Weber Street, northeasterly along Weber Street, north on Magnolia Avenue, east along the Urban Trail corridor, east on Lake Highland Drive, south along Thornton Avenue, east on Canton Street to Hampton Avenue, south on Hampton Avenue to Weber Street and then Palm Drive to Illinois Street. The project corridor crosses 10 intersecting roads including the major thoroughfares of Orange Avenue, Magnolia Avenue, Lake Highland Drive, and Mills Avenue as well as residential cross streets and the FDOT railroad tracks on Orange Avenue. The force main length for this route is 11,100 feet.

In November 2018 the original LS2 to POC Force Main project scope was expanded (Amendment #2) to include Orlando Utility Commission's new potable and raw water transmission mains within the force main corridor. This scope change required additional plan sheets to address the MOT for OUC water main construction for the following locations:

- N Garland Ave. to N. Orange Ave. intersection
- N. Orange Ave. from N. Garland Ave. to Weber St.
- Legion Place between S. Ivanhoe Blvd and N. Orange Ave.

Civil/Site Engineering, Inc.
1645 N. Maitland Ave
Maitland, FL 32751
Phone: 407.644.6570, Fax: 407.644.8945

- N. Orange Ave. from N. Garland Ave. to E. Marks St.
- Weber St. from N. Orange Ave. to Magnolia Ave.
- Magnolia Ave. between N. Orange Ave. and Weber St.
- Magnolia Ave. between Weber St. and E. Marks St.
- Raw water main segment between N. Orange Ave. and Orlando Urban Trail
- Highland Ave. between Lake Highland Dr. and Weber St.
- Ferris Ave./Lake Highland Dr. Intersection
- Terrace Blvd between Lake Highland Dr. and Oregon St.
- Weber St. between Garden Plaza and N. Bumby Ave.
- Weber St./N. Bumby Ave. intersection

In December 2019, the OUC water main scope was further expanded (Amendment #4) to include 4 additional work areas (based on the additional scoping exhibit provided by the **CLIENT** on 12/23/2019):

- Magnolia Ave. between Pasadena Pl. and E. Marks St.
- Highland Ave. between Lake Highland Dr. and N. Orange Ave.
- Highland Ave. between Weber St. and E. Marks St.
- Lake Highland Dr. between N Thornton Ave. and Mills Ave.

In May 2020, the OUC water main scope was modified (Amendment #5) to include N. Garland Ave. between Legion Place Entrance and W. Marks St., W. Marks St. between N. Garland Ave. and N. Orange Ave. (including CSX crossing), and N. Orange Ave. between Weber St. and W. Marks St. (based on the additional scoping exhibit provided by the **CLIENT** on 05/18/2020 and updated on 08/10/2020).

In May 2023, the City and OUC received bids for the Phase 1 project and decided to cancel the bids and re-advertise the project in 3 smaller packages. On 05/15/2023, a workshop session was held in **CLIENT**'s Orlando office with City of Orlando and OUC project managers and the project team in attendance to discuss the methodology of bid package division. As requested by the City and OUC, the project (Phase 1 – LS No. 2 to POC) will be divided into 3 bid packages:

- Part “A” – LS No. 2 to Ferris Avenue
- Part “B” – Ferris Avenue to Fern Creek Avenue
- Part “C” – Fern Creek Avenue to POC

The City and OUC requested the bid packages be created and released for bidding in the order of Part “C” -> Part “A” -> Part “B”. Additionally, pipeline alignment segments shall be re-ordered to start from the west end and finish at the east end for each bid package.

II. DESCRIPTION OF SCOPE: Re-Bid Documents Individual Packages Preparation

Civil/Site Engineering, Inc. shall provide the **CLIENT** with the following supplemental MOT design services:

Part “C” (Fern Creek Avenue to POC) Package:

- Update drawing reference files, title block and sheet numbers
- Updated MOT General Notes Sheet
- Re-sequence segments from west to east
- Update MOT plan sheet for Fern Creek Avenue/Canton Street intersection to allow interface/connection with Part “B”
- Prepare 95% submittal for City/OUC Review
- Finalize 100% plans/prepare bid documents package
- Update MOT Opinion of Probable Costs (OPCC)
- Response to Pre-Bid RFI's (no drawing revision included)
- Prepare conformed drawings and signed and sealed set for City's use

Part "A" (LS 2 to Ferris Avenue) Package:

- Update drawing reference files, title block and sheet numbers
- Updated MOT General Notes Sheet
- Update to FDOT Standard Plans FY2023-24
- Re-sequence segments from west to east
- Field visit and discuss/verify with **CLIENT** on work zone requirements
- Update MOT design due to changed field conditions from the construction associated with the City's Urban Trail Project and OUC Electrical Duct bank Project
- Update MOT plan sheet for Ferris Avenue/Lake Highland Drive intersection to allow interface/connection with Part "B"
- Assist **CLIENT** with response to FDOT RAI for Orange Avenue and Magnolia Avenue crossings
- Prepare 95% submittal for City/OUC Review
- Finalize 100% plans/prepare bid documents package
- Update MOT Opinion of Probable Costs (OPCC)
- Response to Pre-Bid RFI's (no drawing revision included)
- Prepare conformed drawings and signed and sealed set for City's use

Part "B" (Ferris Avenue to Fern Creek Avenue) Package:

- Update drawing reference files, title block and sheet numbers
- Updated MOT General Notes Sheet
- Update to FDOT Standard Plans FY2023-24
- Re-sequence segments from west to east
- Assist **CLIENT** with response to FDOT RAI for Mills Avenue crossing
- Prepare 95% submittal for City/OUC Review
- Finalize 100% plans/prepare bid documents package
- Update MOT Opinion of Probable Costs (OPCC)
- Response to Pre-Bid RFI's (no drawing revision included)
- Prepare conformed drawings and signed and sealed set for City's use

III. FEE SCHEDULE:

Bid Package Preparation Services:
Not-To-Exceed Fee **\$ 40,987.58**

IV. ADDITIONAL SERVICES

In the event additional services beyond the Scope of Services specified herein are requested and authorized by the Client, the work will be conducted as Additional Services and the fees will be based on hourly charges plus direct costs.

APPROVED AND ACCEPTED THIS _____ DAY OF _____, 2023

CIVIL / SITE ENGINEERING, INC.

TETRA TECH, INC.

By _____

By _____

Civil/Site Engineering, Inc.
 1645 N. Maitland Ave
 Maitland, FL 32751
 Phone: 407.644.6570, Fax: 407.644.8945

Andrea Marlea Jernigan-Gwinn, President

Jeremy Jardell, P.E., Sr. Project Manager

CITY OF ORLANDO

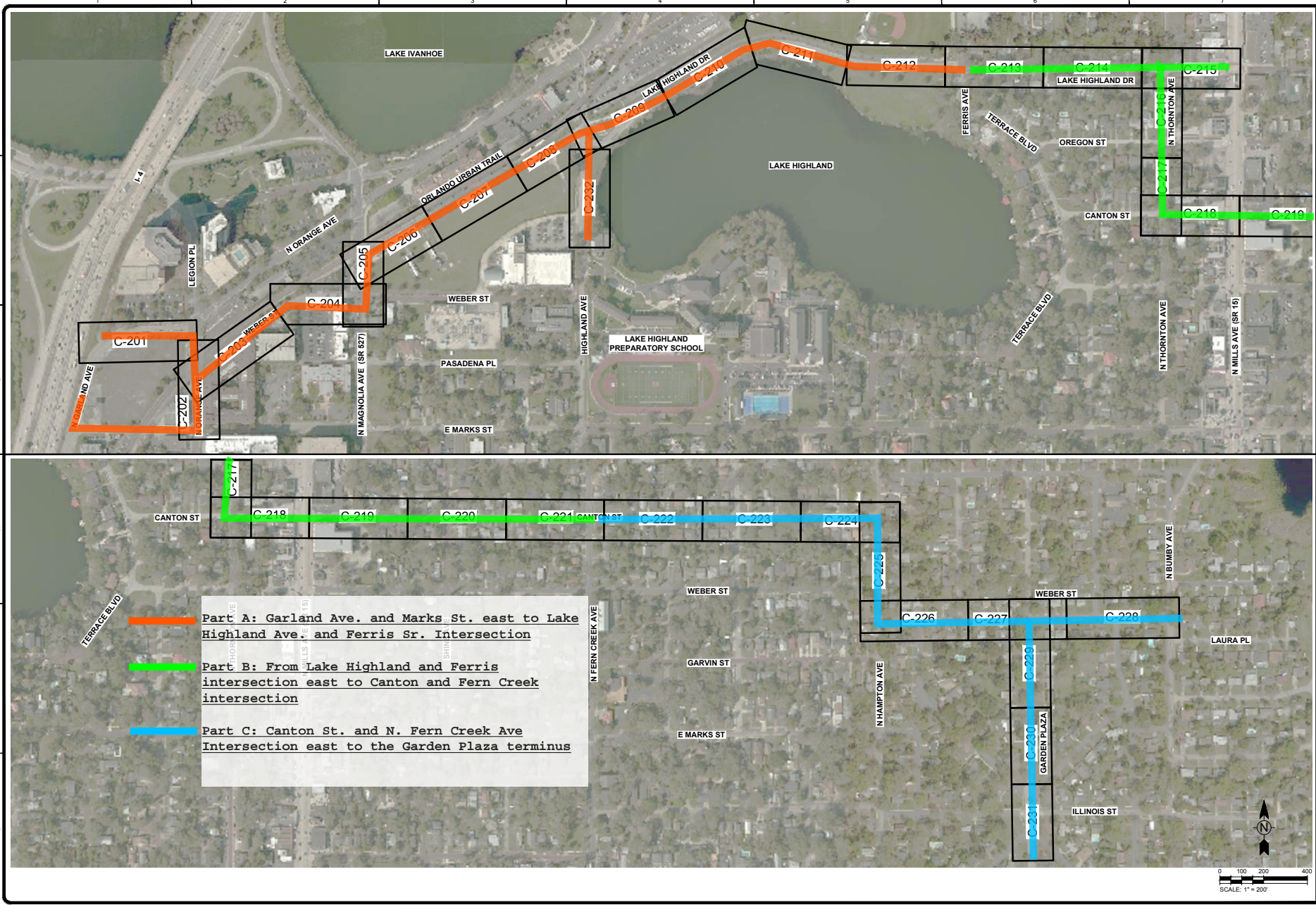


Project Name: LS2 FM and OUC Water Mains Project
 Preferred Route LS2 to POC (Phase I)
 Re-Bid Packages Preparation - Amendment #7

Firm Name: Civil/Site Engineering, Inc.

Task Description	Senior Engineer (QC)		Project Manager/Engineer		Senior Designer		Total Labor Costs	
	Billing Rate \$249.24		Billing Rate \$171.81		Billing Rate \$110.83		with 2.29 Multiplier	
	Manhours	Hourly Rate	Manhours	Hourly Rate	Manhours	Hourly Rate	Manhours	Hourly Rate
Part "C" (Fern Creek Ave. to POC)								
C.1 - Project Re-Bid Package Division Workshop			3.0	\$515.43			3.0	\$515.43
C.2 - Team Coordination/Meetings			4.0	\$687.24			4.0	\$687.24
C.3 - MOT Segment Re-sequencing 95% Plans	2.0	\$498.48	7.0	\$1,202.67	12.0	\$1,329.96	21.0	\$3,031.11
C.4 - 100% Plans/ Bid Package Preparation			4.0	\$687.24	8.0	\$886.64	12.0	\$1,573.88
C.5 - MOT OPCC Update			4.0	\$687.24			4.0	\$687.24
C.6 - Response to Pre-Bid RFI's			4.0	\$687.24			4.0	\$687.24
C.7 - Conformed Drawings/S&S Set			4.0	\$687.24	6.0	\$664.98	10.0	\$1,352.22
Subtotal	2.0	\$498.48	30.0	\$5,154.30	26.0	\$2,881.58	58.0	\$8,534.36
Part "B" (Ferris Ave. to Fern Creek Ave.)								
B.1 - Team Coordination/Meetings			5.0	\$859.05			5.0	\$859.05
B.2 - MOT Segment Re-sequencing 95% Plans	2.0	\$498.48	7.0	\$1,202.67	12.0	\$1,329.96	21.0	\$3,031.11
B.3 - 100% Plans/ Bid Package Preparation			4.0	\$687.24	8.0	\$886.64	12.0	\$1,573.88
B.4 - MOT OPCC Update			4.0	\$687.24			4.0	\$687.24
B.5 - Assistance with FDOT RAI Response			6.0	\$1,030.86	4.0	\$443.32	10.0	\$1,474.18
B.6 - Response to Pre-Bid RFI's			4.0	\$687.24			4.0	\$687.24
B.7 - Conformed Drawings/S&S Set			4.0	\$687.24	6.0	\$664.98	10.0	\$1,352.22
Subtotal	2.0	\$498.48	34.0	\$5,841.54	30.0	\$3,324.90	66.0	\$9,664.92
Part "A" (LS2 to Ferris Ave.)								
A.1 - Team Coordination/Meetings			5.0	\$859.05			5.0	\$859.05
A.2 - Coordination w/ City Parks & Recreation (Urban Trail)			4.0	\$687.24			4.0	\$687.24
A.3 - Update MOT Design for Changed Field Conditions	4.0	\$996.96	44.0	\$7,559.64	24.0	\$2,659.92	72.0	\$11,216.52
A.4 - MOT Segment Re-sequencing 95% Plans			7.0	\$1,202.67	12.0	\$1,329.96	19.0	\$2,532.63
A.5 - 100% Plans/ Bid Package Preparation			4.0	\$687.24	8.0	\$886.64	12.0	\$1,573.88
A.6 - MOT OPCC Update			4.0	\$687.24			4.0	\$687.24
A.7 - Assistance with FDOT RAI Response			16.0	\$2,748.96	4.0	\$443.32	20.0	\$3,192.28
A.8 - Response to Pre-Bid RFI's			4.0	\$687.24			4.0	\$687.24
A.9 - Conformed Drawings/S&S Set			4.0	\$687.24	6.0	\$664.98	10.0	\$1,352.22
Subtotal	4.0	\$996.96	92.0	\$15,806.52	54.0	\$5,984.82	150.0	\$22,788.30
Total Hourly Not-to-Exceed Fee	8.0	\$1,993.92	156.0	\$26,802.36	110.0	\$12,191.30	274.0	\$40,987.58

EXHIBIT 2 - FIGURE OF REBID PARTS



Part A: Garland Ave. and Marks St. east to Lake Highland Ave. and Ferris Sr. Intersection

Part B: From Lake Highland and Ferris intersection east to Canton and Fern Creek intersection

Part C: Canton St. and N. Fern Creek Ave Intersection east to the Garden Plaza terminus

1/24/2023 9:47:58 AM - C:\PROJECTS\ORLANDO\ER086\10000-08610-18004\CAD\SHEET\FISC-200 KEY MAP.DWG - GUARD, STEVEN

Tetra Tech, Inc. 201 East Pine Street, Suite 1000 Englewood, CO 80113 TEL: 477-839-3955 FAX: 477-839-3790 www.tetrattech.com	
Jeanine M. Alexander, P.E. P.E. No. 85644, FL 201 East Pine Street, Suite 1000 Englewood, CO 80113 Engineering Business No. 2429	DATE: _____ _____ _____
CITY OF ORLANDO CITY OF ORLANDO/OCJG/IPA LS 2 FM AND OJC IMPROVEMENTS KEY MAP WASTEWATER	Project No.: 200-08510-18004 Designed By: JMA Drawn By: PD Checked By: JMA
SCALE: 1" = 200' Bar Measures 1 inch	