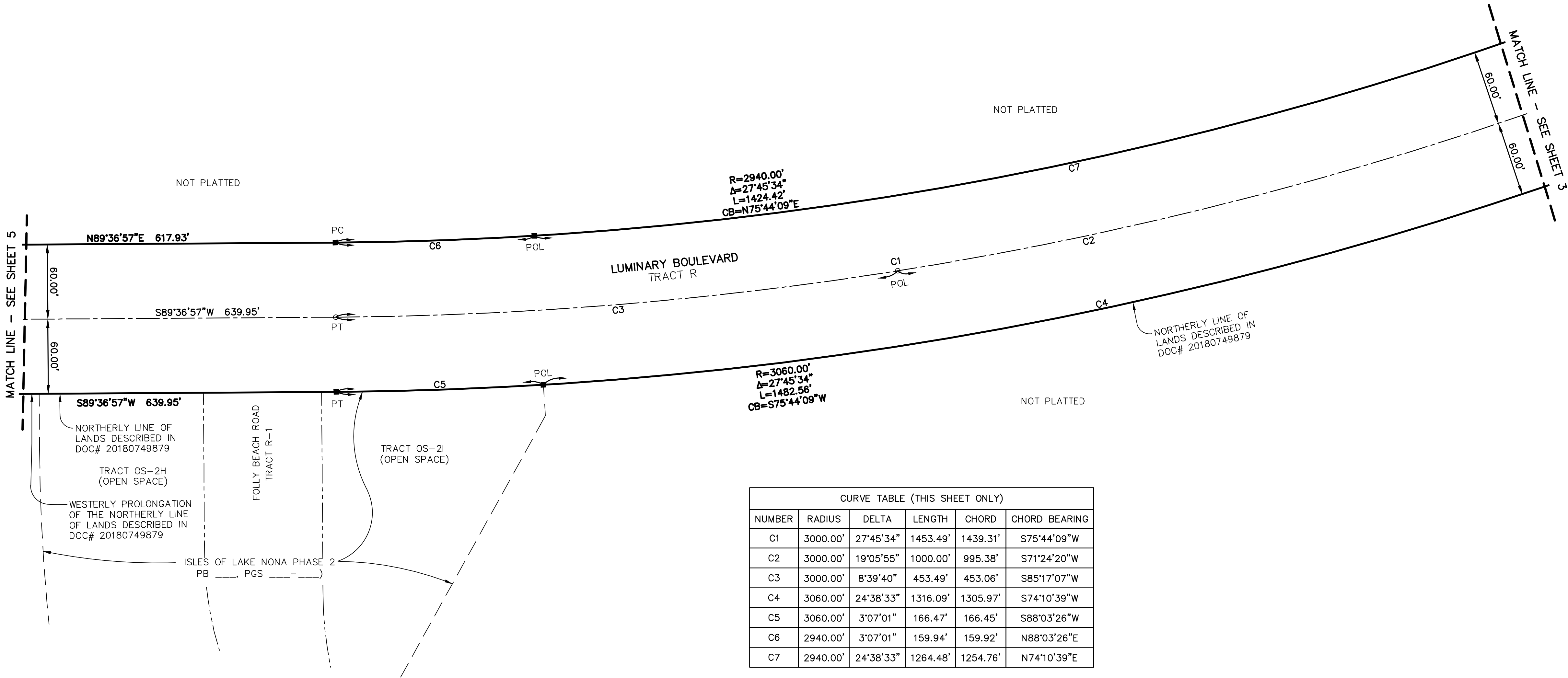
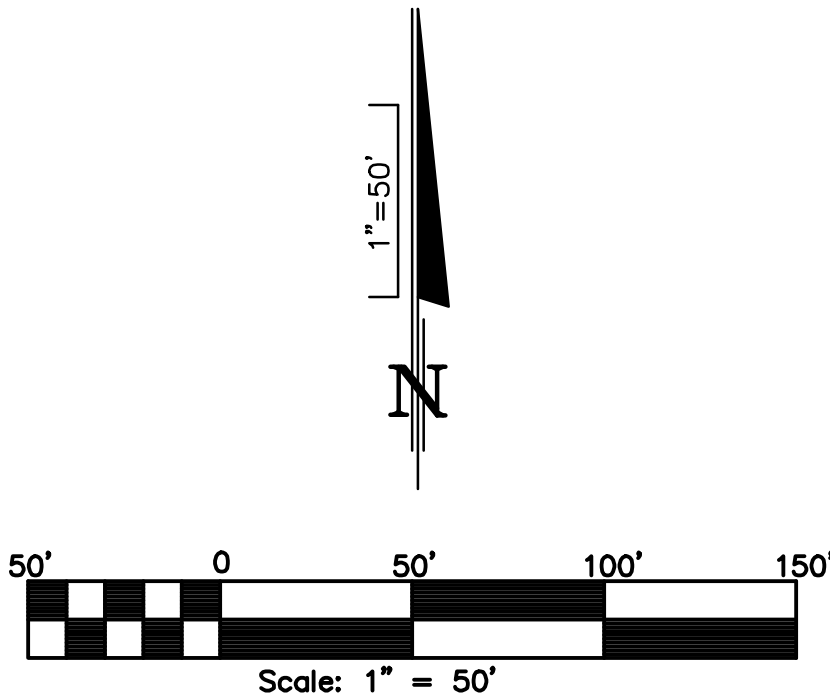


LUMINARY BOULEVARD PHASE 1B
A PORTION OF SECTION 31, TOWNSHIP 24 SOUTH, RANGE 31 EAST
CITY OF ORLANDO, ORANGE COUNTY, FLORIDA

PLAT
BOOK

PAGE

SHEET 4 OF 5
SEE SHEET 1 FOR NOTES
SEE SHEET 2 FOR LEGEND

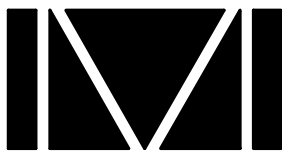


CURVE TABLE (THIS SHEET ONLY)					
NUMBER	RADIUS	DELTA	LENGTH	CHORD	CHORD BEARING
C1	3000.00'	27°45'34"	1453.49'	1439.31'	S75°44'09"W
C2	3000.00'	19°05'55"	1000.00'	995.38'	S71°24'20"W
C3	3000.00'	8°39'40"	453.49'	453.06'	S85°17'07"W
C4	3060.00'	24°38'33"	1316.09'	1305.97'	S74°10'39"W
C5	3060.00'	3°07'01"	166.47'	166.45'	S88°03'26"W
C6	2940.00'	3°07'01"	159.94'	159.92'	N88°03'26"E
C7	2940.00'	24°38'33"	1264.48'	1254.76'	N74°10'39"E

The features and linework shown hereon are in grid relative to National Geodetic Survey control point "Lance" (PID AJ2445), Northing 1477081.39, Easting 575759.46 Florida State Plane Coordinate System, Florida East zone, 1983 North American Datum, 2011 adjustment average combined scale factor: 0.99994883912 (1.00005116349757). All dimensions are Grid dimensions in U.S. Survey Feet, based on said Florida State Plane Coordinate System, Florida East zone, 1983 North American Datum, 2011 adjustment.

NOTICE: THIS PLAT, AS RECORDED IN ITS GRAPHIC FORM, IS THE OFFICIAL DEPICTION OF THE SUBDIVIDED LANDS DESCRIBED HEREIN AND WILL IN NO CIRCUMSTANCES BE SUPPLANTED IN AUTHORITY BY ANY OTHER GRAPHIC OR DIGITAL FORM OF THE PLAT. THERE MAY BE ADDITIONAL RESTRICTIONS THAT ARE NOT RECORDED ON THIS PLAT THAT MAY BE FOUND IN THE PUBLIC RECORDS OF THIS COUNTY.

PREPARED BY:



DONALD W. MCINTOSH ASSOCIATES, INC.
ENGINEERS PLANNERS SURVEYORS
2200 PARK AVENUE NORTH, WINTER PARK, FLORIDA 32789 (407) 644-4068
CERTIFICATE OF AUTHORIZATION NUMBER LB68