

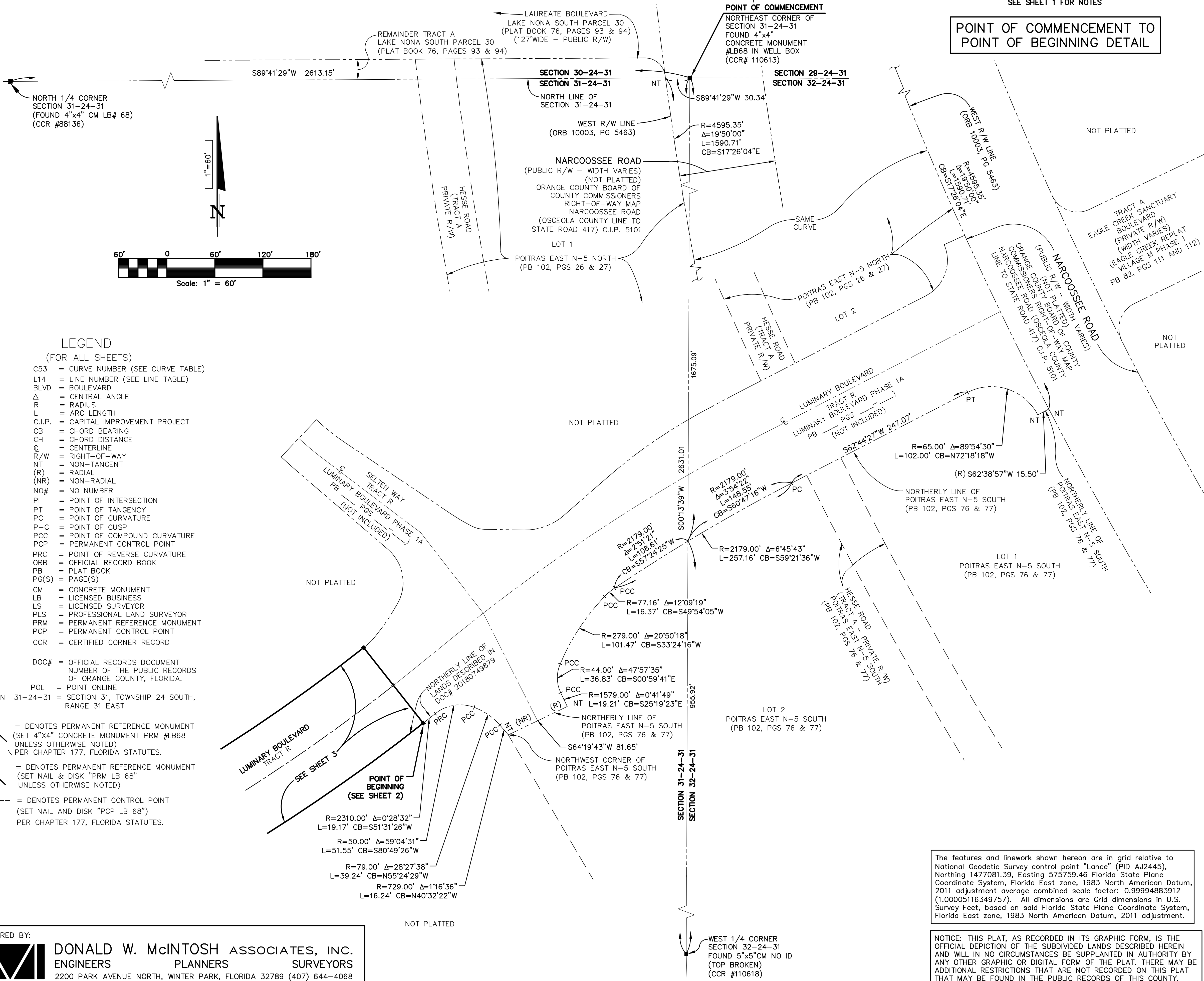
LUMINARY BOULEVARD PHASE 1B
A PORTION OF SECTION 31, TOWNSHIP 24 SOUTH, RANGE 31 EAST
CITY OF ORLANDO, ORANGE COUNTY, FLORIDA

PLAT
BOOK

PAGE

SHEET 2 OF 5
SEE SHEET 1 FOR NOTES

POINT OF COMMENCEMENT TO
POINT OF BEGINNING DETAIL



- LEGEND
(FOR ALL SHEETS)
- C53 = CURVE NUMBER (SEE CURVE TABLE)
 - L14 = LINE NUMBER (SEE LINE TABLE)
 - BLVD = BOULEVARD
 - Δ = CENTRAL ANGLE
 - R = RADIUS
 - L = ARC LENGTH
 - C.I.P. = CAPITAL IMPROVEMENT PROJECT
 - CB = CHORD BEARING
 - CH = CHORD DISTANCE
 - © = CENTERLINE
 - R/W = RIGHT-OF-WAY
 - NT = NON-TANGENT
 - (R) = RADIAL
 - (NR) = NON-RADIAL
 - NO# = NO NUMBER
 - PI = POINT OF INTERSECTION
 - PT = POINT OF TANGENCY
 - PC = POINT OF CURVATURE
 - P-C = POINT OF CUSP
 - PCC = POINT OF COMPOUND CURVATURE
 - PCP = PERMANENT CONTROL POINT
 - PRC = POINT OF REVERSE CURVATURE
 - ORB = OFFICIAL RECORD BOOK
 - PB = PLAT BOOK
 - PG(S) = PAGE(S)
 - CM = CONCRETE MONUMENT
 - LB = LICENSED BUSINESS
 - LS = LICENSED SURVEYOR
 - PLS = PROFESSIONAL LAND SURVEYOR
 - PRM = PERMANENT REFERENCE MONUMENT
 - PCP = PERMANENT CONTROL POINT
 - CCR = CERTIFIED CORNER RECORD
- DOC# = OFFICIAL RECORDS DOCUMENT
NUMBER OF THE PUBLIC RECORDS
OF ORANGE COUNTY, FLORIDA.
- POL = POINT ONLINE
- SECTION 31-24-31 = SECTION 31, TOWNSHIP 24 SOUTH,
RANGE 31 EAST
- = DENOTES PERMANENT REFERENCE MONUMENT
(SET 4"x4" CONCRETE MONUMENT PRM #LB68
UNLESS OTHERWISE NOTED)
PER CHAPTER 177, FLORIDA STATUTES.
- = DENOTES PERMANENT REFERENCE MONUMENT
(SET NAIL & DISK "PRM LB 68"
UNLESS OTHERWISE NOTED)
- = DENOTES PERMANENT CONTROL POINT
(SET NAIL AND DISK "PCP LB 68")
PER CHAPTER 177, FLORIDA STATUTES.

PREPARED BY:
DONALD W. MCINTOSH ASSOCIATES, INC.
ENGINEERS PLANNERS SURVEYORS
2200 PARK AVENUE NORTH, WINTER PARK, FLORIDA 32789 (407) 644-4068
CERTIFICATE OF AUTHORIZATION NUMBER LB68

The features and linework shown hereon are in grid relative to National Geodetic Survey control point "Lance" (PID AJ2445), Northing 1477081.39, Easting 575759.46 Florida State Plane Coordinate System, Florida East zone, 1983 North American Datum, 2011 adjustment average combined scale factor: 0.99994883912 (1.00005116349757). All dimensions are Grid dimensions in U.S. Survey Feet, based on said Florida State Plane Coordinate System, Florida East zone, 1983 North American Datum, 2011 adjustment.

NOTICE: THIS PLAT, AS RECORDED IN ITS GRAPHIC FORM, IS THE OFFICIAL DEPICTION OF THE SUBDIVIDED LANDS DESCRIBED HEREIN AND WILL IN NO CIRCUMSTANCES BE SUPPLANTED IN AUTHORITY BY ANY OTHER GRAPHIC OR DIGITAL FORM OF THE PLAT. THERE MAY BE ADDITIONAL RESTRICTIONS THAT ARE NOT RECORDED ON THIS PLAT THAT MAY BE FOUND IN THE PUBLIC RECORDS OF THIS COUNTY.