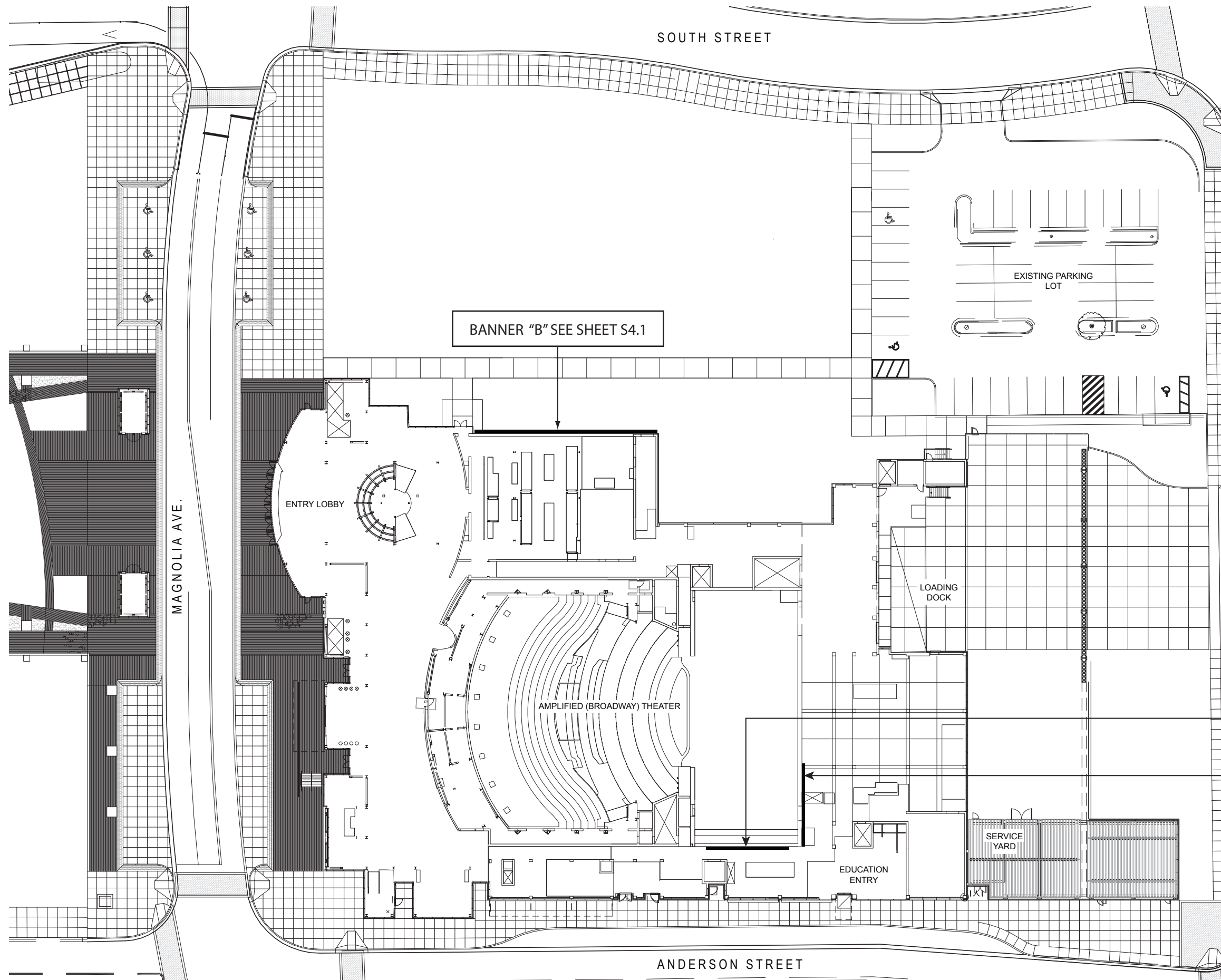


FIRST LEVEL
1" = 50'-0"

1

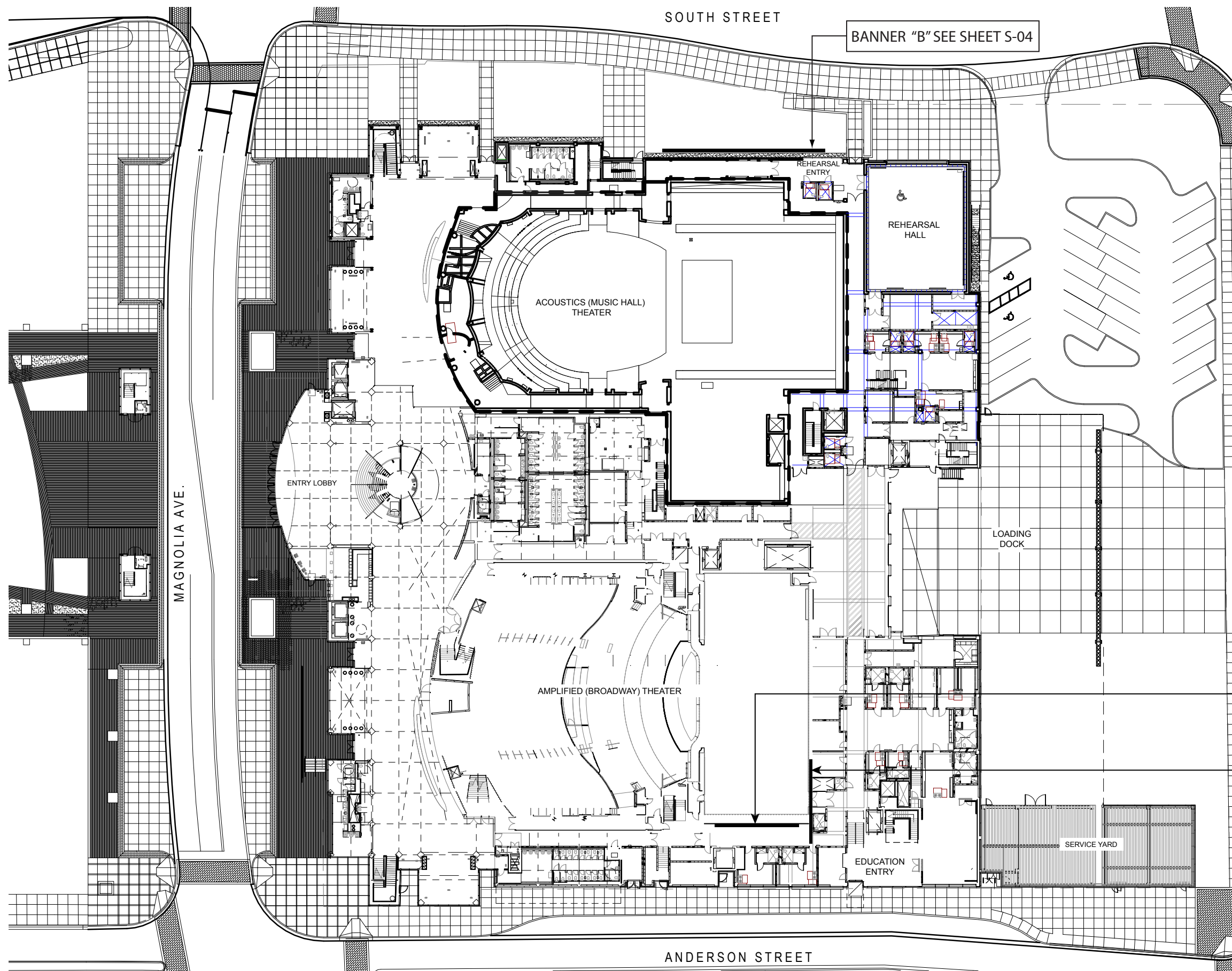


BANNER "A" (OPTIONAL LOCATION)

BANNER "A" SEE SHEET S-03

FIRST LEVEL
1" = 50'-0"

1



BANNER "B" SEE SHEET S-04

ACOUSTICS (MUSIC HALL)
THEATER

REHEARSAL
HALL

ENTRY LOBBY

AMPLIFIED (BROADWAY) THEATER

LOADING
DOCK

EDUCATION
ENTRY

SERVICE YARD

BANNER "A" (OPTIONAL LOCATION)

BANNER "A" SEE SHEET S-03

FIRST LEVEL

1" = 50'-0"

1

#A NEW PERMANENT CHANGEABLE
GRAPHIC "A" 40' x 40'
(1,600 SQUARE FEET)



EAST ELEVATION

1/32" = 1'-0"

1

#5 THEATER ID
SEE SHEET S-09

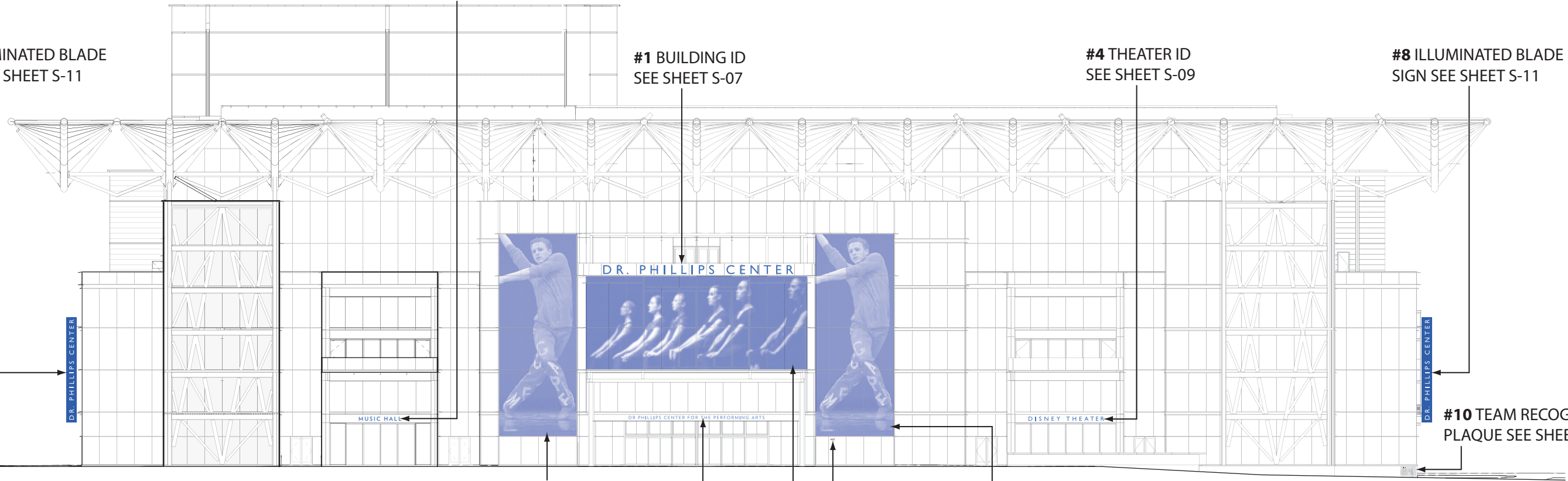
#22 GRAPHIC 3
PERMANENT CHANGEABLE
GRAPHICS SEE SHEET S-05

#9 ILLUMINATED BLADE
SIGN SEE SHEET S-11

#1 BUILDING ID
SEE SHEET S-07

#4 THEATER ID
SEE SHEET S-09

#8 ILLUMINATED BLADE
SIGN SEE SHEET S-11



WEST ELEVATION

1/32" = 1'-0"

2

#7 GRAPHIC 1 PERMANENT CHANGEABLE
GRAPHIC SEE SHEET S-05

#2 BUILDING ID
SEE SHEET S-08

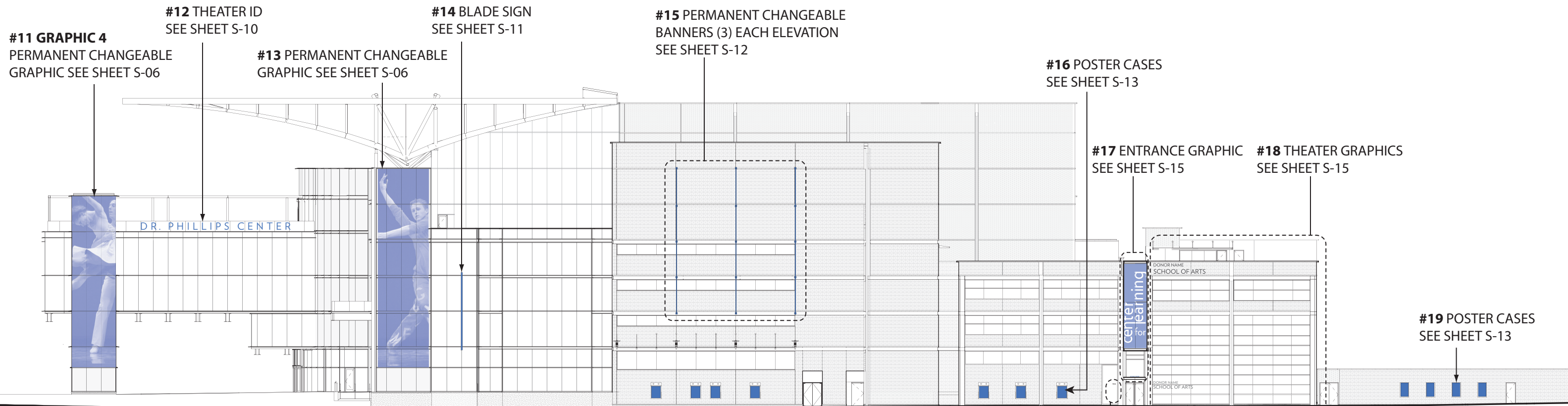
#6 GRAPHIC 2 PERMANENT CHANGEABLE
GRAPHICS SEE SHEET S-05

#10 TEAM RECOGNITION
PLAQUE SEE SHEET S-25

#3 INTEGRATED ELECTRONIC
DISPLAY SEE SHEET S-05

ADDRESS SIGN
SEE SHEET S-20
NOTE: SIGN IS ON BUILDING BEYOND
NOT STAIR TOWER

DR PHILLIPS CENTER EXTERIOR SIGNAGE
STAGE 2 15 JULY 2014



SOUTH ELEVATION

1/32" = 1'-0"

1

#B NEW PERMANENT CHANGEABLE
GRAPHIC "B" 40'-0" x 60'-0"
(2,400 SQUARE FEET)

#27 ENTRANCE GRAPHIC
SEE SHEET S-15

#26 THEATER GRAPHICS
SEE SHEET S-14

#24 PERMANENT CHANGEABLE
BANNERS (3) EACH ELEVATION
SEE SHEET S-12

#23 BLADE SIGN
SEE SHEET S-11

#22 PERMANENT CHANGEABLE
GRAPHICS SEE SHEET S-06

#21 THEATER ID
SEE SHEET S-10

#20 NOTE: STAIR
TOWER STAGE 1

DR. PHILLIPS CENTER

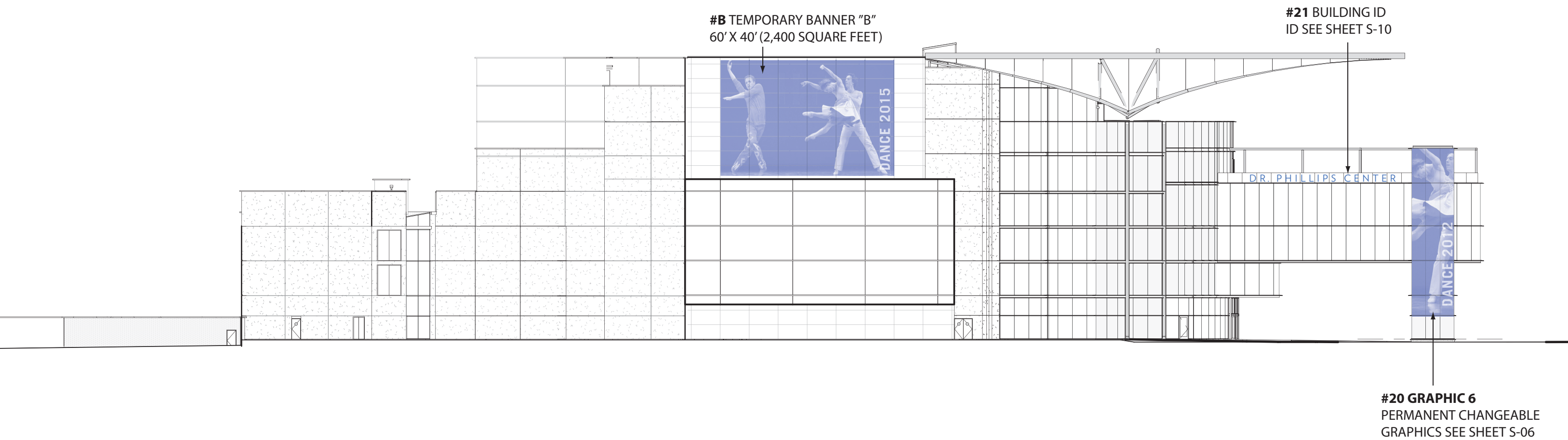
NORTH ELEVATION STAGE II

1/32" = 1'-0"

2

#25 POSTER CASES
SEE SHEET S-13

PERMANENT CHANGEABLE
GRAPHICS SEE SHEET S-06

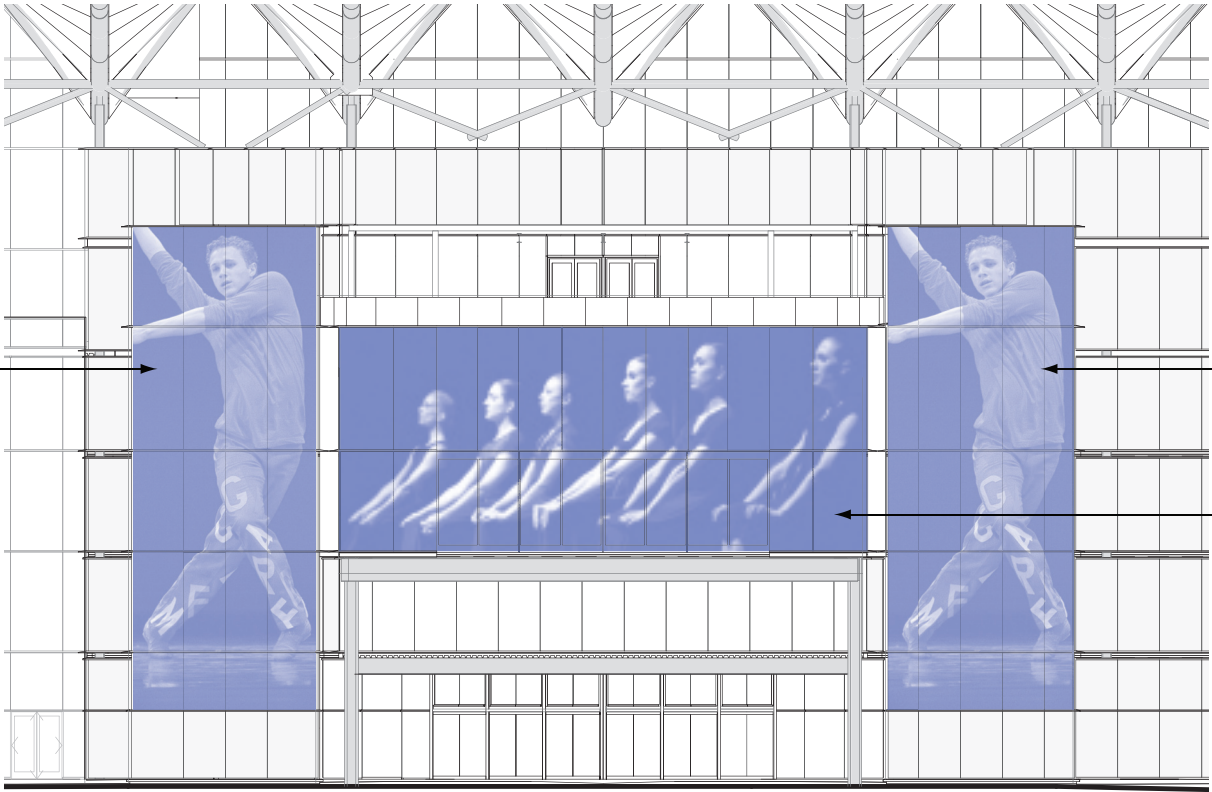


NORTH ELEVATION

1/32" = 1'-0"

1

GRAPHIC # 1: MAXIMUM ALLOWABLE SQUARE FOOTAGE OF ADHESIVE BACKED DIGITALLY PRINTED VINYL GRAPHIC TO BE 1,474 SQUARE FEET. GRAPHIC TO BE ON PERFORATED VINYL, WITH DIGITAL IMAGE PRINT. VINYL TO BE APPLIED ON EXTERIOR CURTAIN WALL GLASS SURFACES ONLY. SIGNS ARE DEFINED AS PERMANENT CHANGEABLE.



GRAPHIC # 2: MAXIMUM ALLOWABLE SQUARE FOOTAGE OF ADHESIVE BACKED DIGITALLY PRINTED VINYL GRAPHIC TO BE 1,474 SQUARE FEET. GRAPHIC TO BE ON PERFORATED VINYL, WITH DIGITAL IMAGE PRINT. VINYL TO BE APPLIED ON EXTERIOR CURTAIN WALL GLASS SURFACES ONLY. SIGNS ARE DEFINED AS PERMANENT CHANGEABLE.

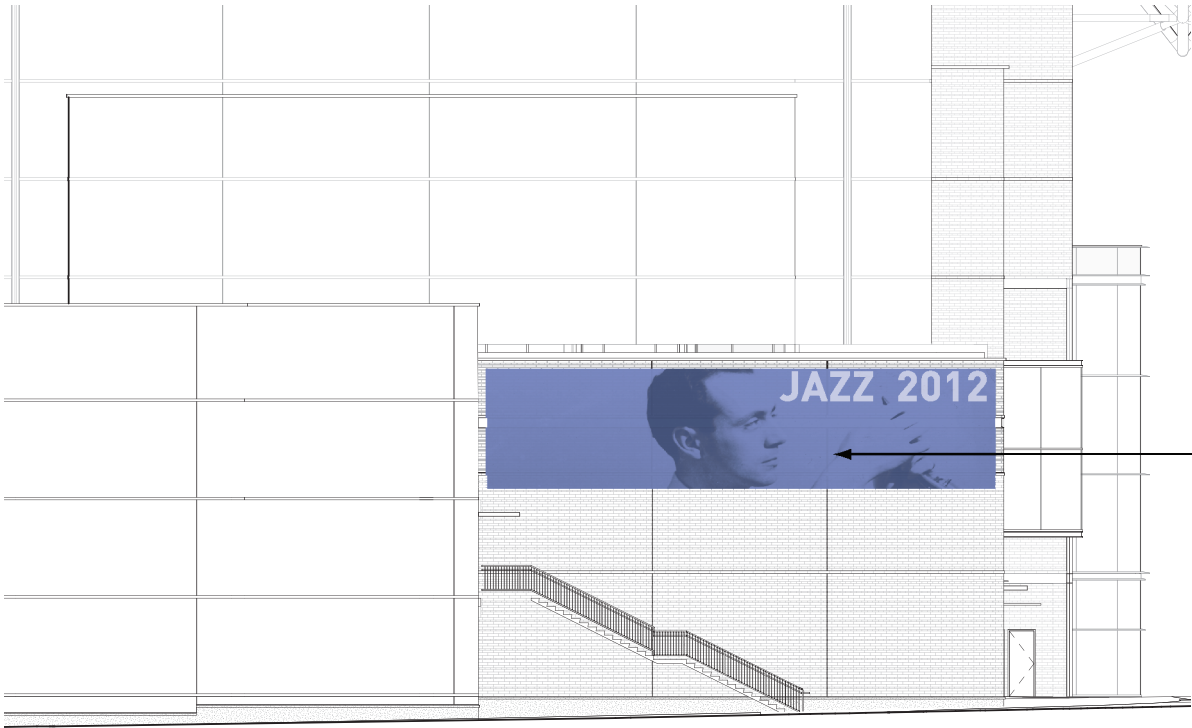
INTEGRATED ELECTRONIC DISPLAY 1: MAXIMUM ALLOWABLE ELECTRONIC DISPLAY AREA ON WEST FACADE TO BE APPROX 1,600 SQUARE FEET. INTEGRATED LED DISPLAY TO BE SEMI-TRANSPARENT OR SIMILAR TECHNOLOGY. LED SCREEN IS DEFINED AS PERMANENT CHANGEABLE.

WEST ELEVATION PERMANENT CHANGEABLE GRAPHICS

DRAWING NOT TO SCALE

1

GENERAL NOTES: LIGHTING HOURS OF BUILDING MOUNTED SUPERGRAPHICS AND FUTURE LED SCREEN ARE TO BE LIMITED TO 2:00 A.M. AND WILL BE CONTROLLED BY TIMER/SENSOR. SPONSOR TEXT AREA IS TO BE LIMITED TO 15% OF SIGN AREA FOR EACH GRAPHIC LOCATION. TOTAL TEXT AREA INCLUDING THEATER MESSAGING SHALL NOT EXCEED 40% FOR ANY GIVEN SIGN.



GRAPHIC #3: MAXIMUM ALLOWABLE SQUARE FOOTAGE OF DIGITALLY PRINTED GRAPHICS ON EAST ELEVATION TO BE 914.5 SQUARE FEET. GRAPHICS TO BE ON OPAQUE VINYL. EXTERNAL ILLUMINATION. VINYL TO BE TENSIONED ON EXTERIOR WALL SURFACE. GRAPHIC IS DEFINED AS PERMANENT CHANGEABLE.

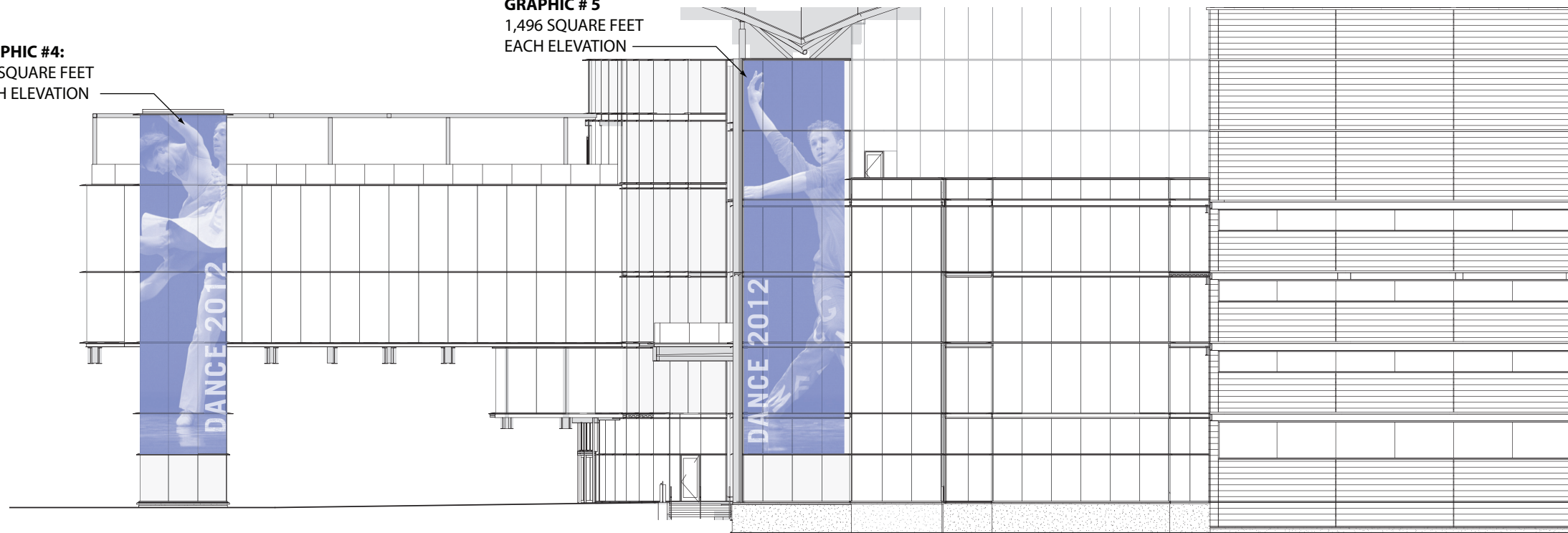
STAGE 2: EAST ELEVATION PERMANENT CHANGEABLE GRAPHICS

DRAWING NOT TO SCALE

2

GRAPHIC #4:
924 SQUARE FEET
EACH ELEVATION

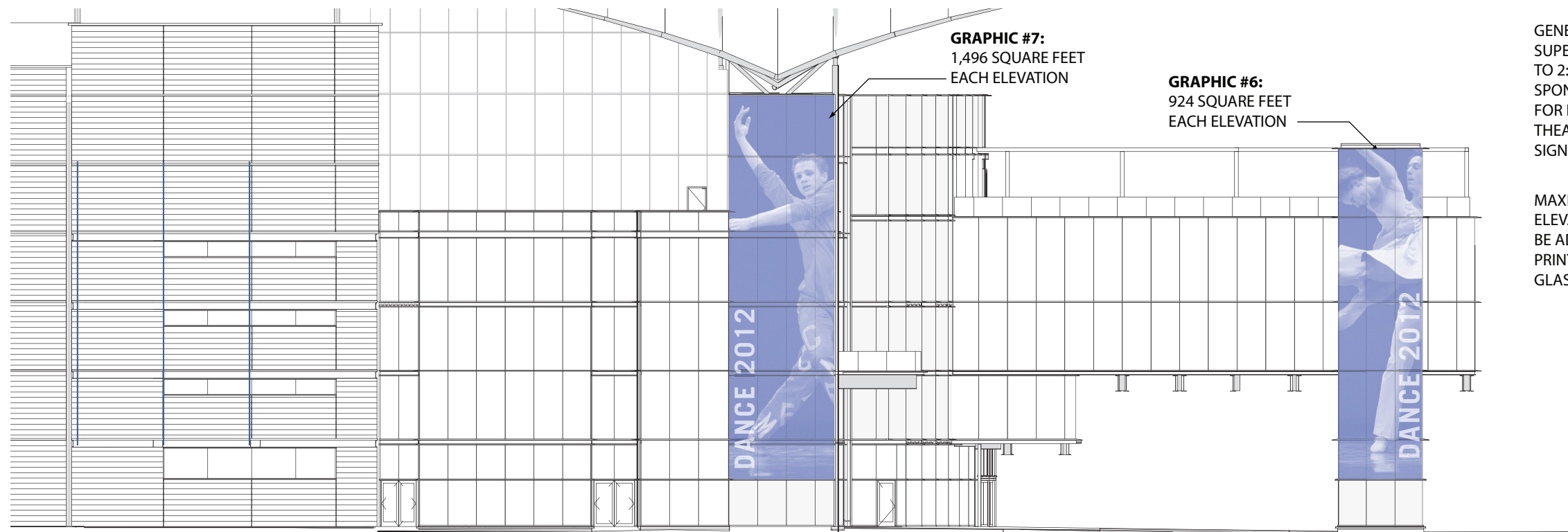
GRAPHIC #5
1,496 SQUARE FEET
EACH ELEVATION



PERMANENT CHANGEABLE GRAPHIC LOCATIONS SOUTH ELEVATION

DRAWING NOT TO SCALE

1



GRAPHIC #7:
1,496 SQUARE FEET
EACH ELEVATION

GRAPHIC #6:
924 SQUARE FEET
EACH ELEVATION

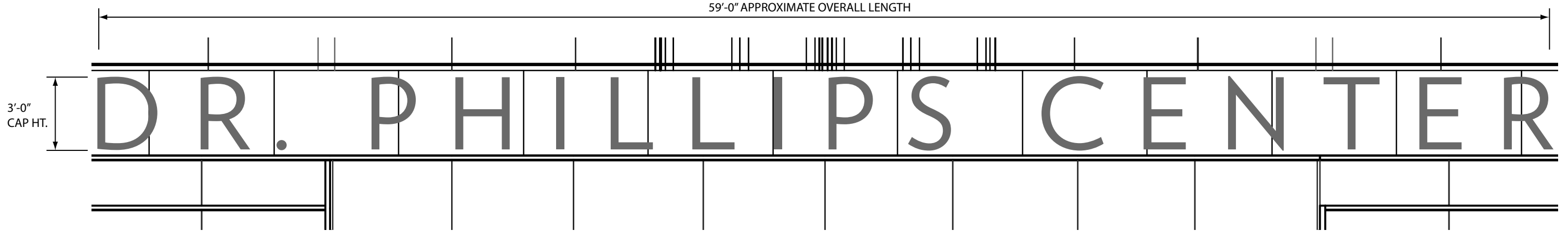
GENERAL NOTES: LIGHTING HOURS OF BUILDING MOUNTED SUPERGRAPHICS AND FUTURE LED SCREEN ARE TO BE LIMITED TO 2:00 A.M. AND WILL BE CONTROLLED BY TIMER/SENSOR. SPONSOR TEXT AREA IS TO BE LIMITED TO 15% OF SIGN AREA FOR EACH GRAPHIC LOCATION. TOTAL TEXT AREA INCLUDING THEATER MESSAGING SHALL NOT EXCEED 40% FOR ANY GIVEN SIGN.

MAXIMUM ALLOWABLE SQUARE FOOTAGE NORTH AND SOUTH ELEVATIONS TO BE 2,420 SQUARE FEET EACH. GRAPHICS TO BE ADHESIVE BACKED PERFORATED VINYL, WITH DIGITAL IMAGE PRINT. VINYL TO BE APPLIED ON EXTERIOR CURTAIN WALL GLASS SURFACES ONLY. GRAPHICS ARE DEFINED AS TEMPORARY.

PERMANENT CHANGEABLE GRAPHIC LOCATIONS NORTH ELEVATION STAGE II

DRAWING NOT TO SCALE

2

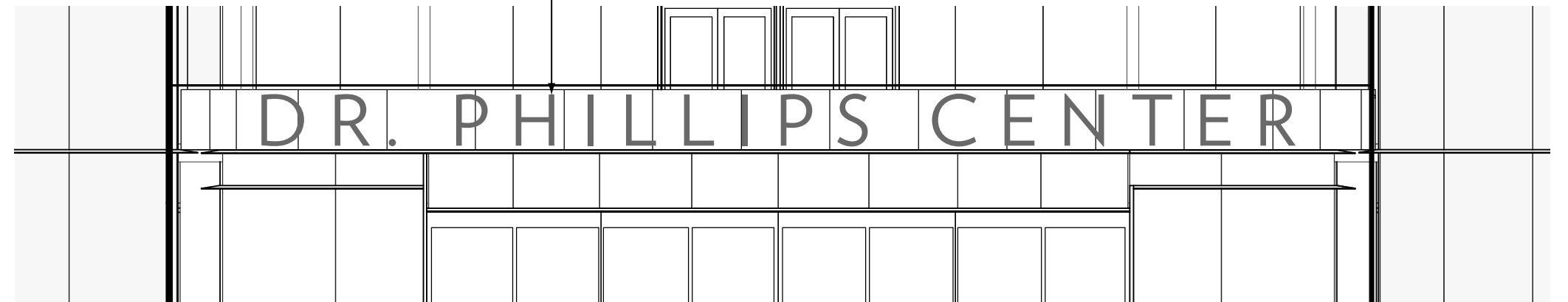


SIGN DETAIL ELEVATION

1/4" = 1'-0"

1

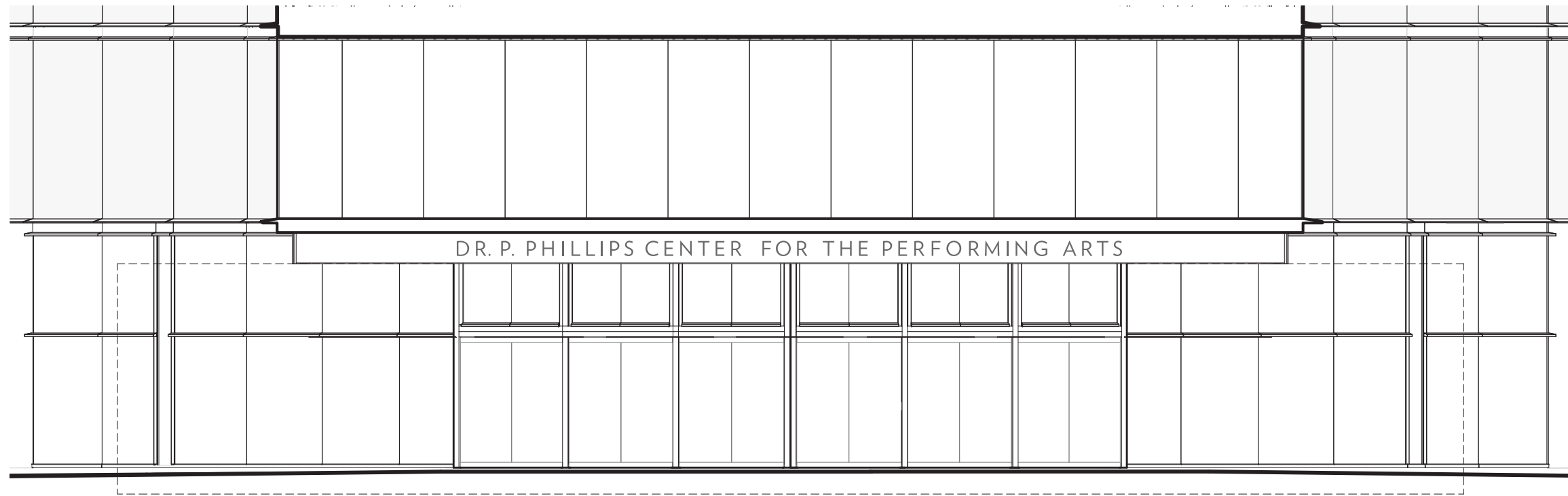
3M ADHESIVE BACKED VINYL ON GLASS TERRACE RAIL SURFACE. LETTER HEIGHT 36". LETTERFORMS ARE SINGLE CUTOUT FORMS WITH NO SEAMS. LETTERS ARE CUT AT GLASS SEAMS. APPLY TO GLASS FIRST SURFACE, WITH IDENTICAL LETTERS APPLIED SECOND SURFACE AS VISUAL BACKER. FINAL COLOR IS WHITE. TOTAL AREA APPROXIMATELY 177 SF.



SIGN ELEVATION

1/8" = 1'-0"

2

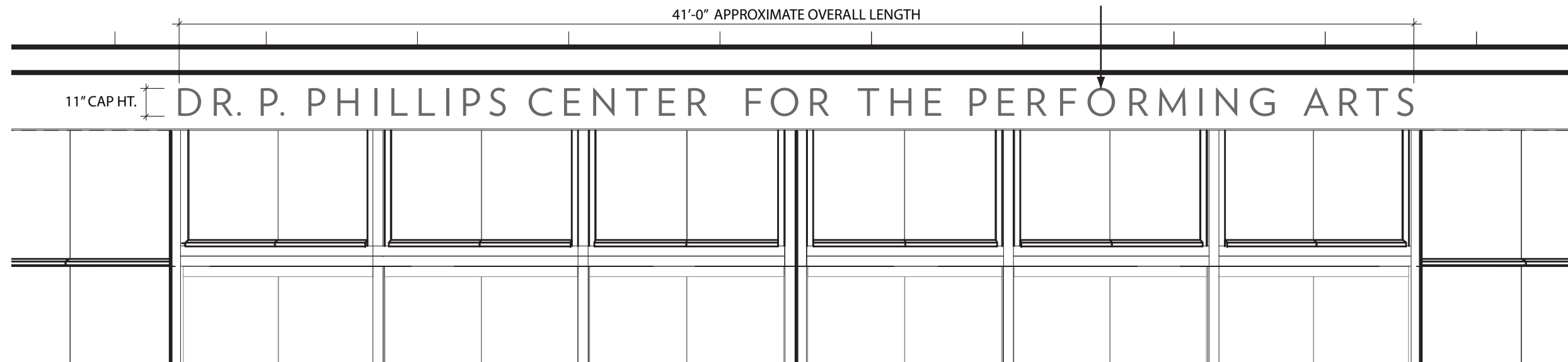


SIGN ELEVATION

1/8" = 1'-0"

1

PIN MOUNTED PAINTED ALUMINUM CHANNEL LETTER FORMS ON PAINTED BACKER PANEL. PANEL MATCHES LENGTH AND HT OF BEAM WEB. LETTER DEPTH IS 1". CAP HT. 11" MOUNT LETTERS 1/2" FROM FACE OF PANEL. CENTER VERTICALLY AND HORIZONTALLY WITHIN PANEL AS SHOWN. BACKLIT ILLUMINATED WHITE "HALO" LIGHTING EFFECT.

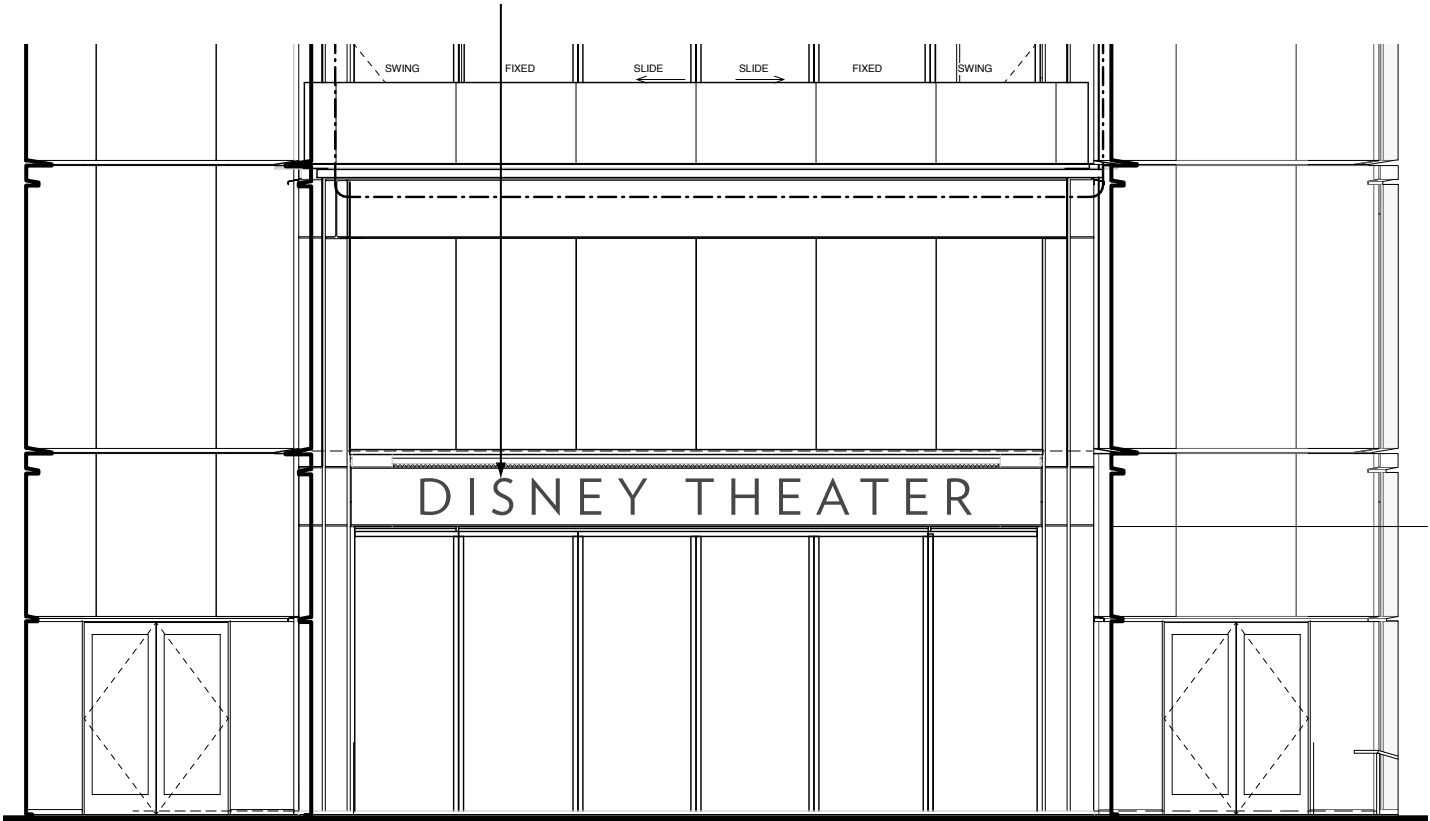


DETAIL ELEVATION

1/4" = 1'-0"

2

PAINTED ALUMINUM REVERSE CHANNEL LETTERFORMS. LETTER HEIGHT 18" LETTER DEPTH 2" FINAL COPY T.B.D. LETTERS MOUNTED 1" FROM FACE OF EXPOSED STRUCTURAL BEAM. THIS SIGN REQUIRED FOR (2) LOCATIONS. CENTER TYPE VERTICALLY AND HORIZONTALLY WITHIN BEAM. SIGN IS NOT ILLUMINATED. NO FASTENERS ALLOWED ON LETTERFORM EXTERIOR. NO FASTENER PENETRATION OF BEAM-WELD CONNECTIONS. SIMILAR SIGN REQUIRED FOR PHASE 2 THEATER.



DETAIL ELEVATION

1/8" = 1'-0"

1



1

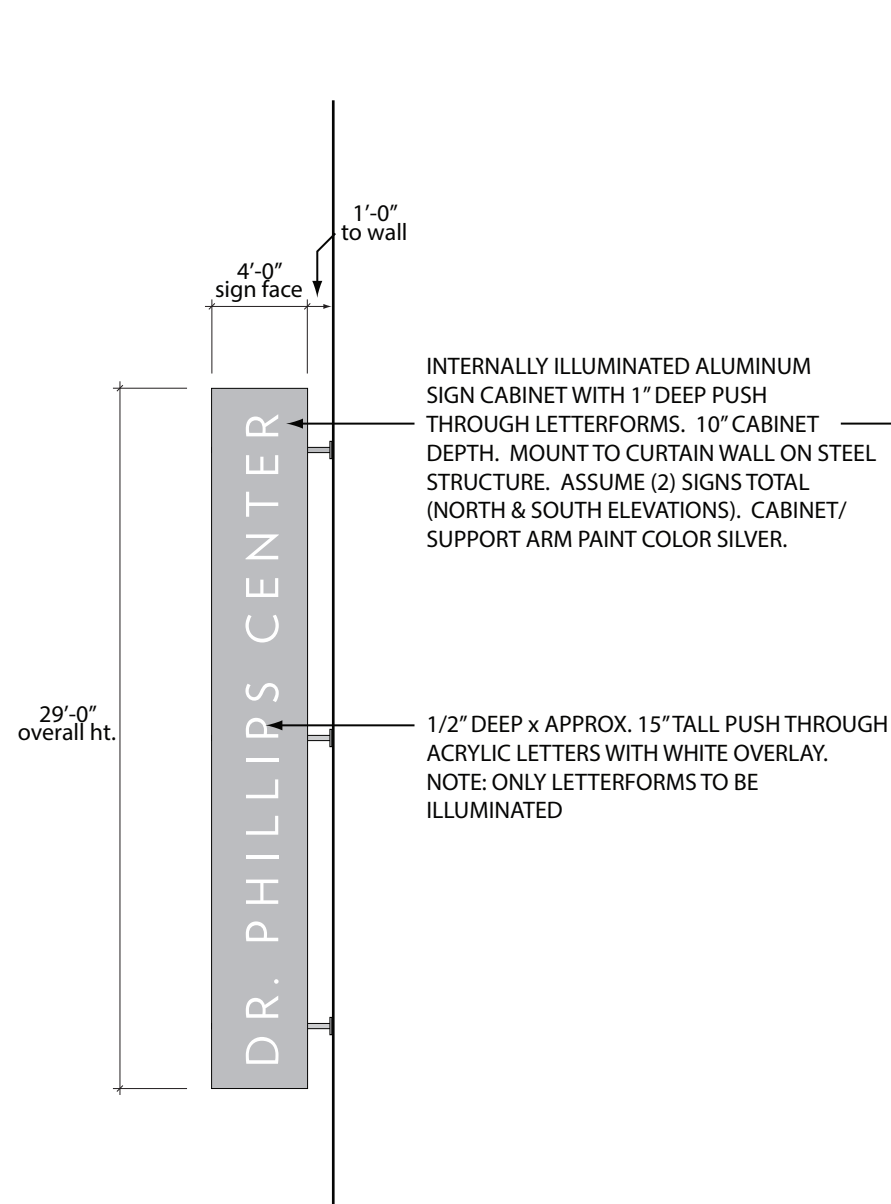
Architectural elevation drawing of the Dr. Phillips Center facade. The drawing shows a grid of windows and structural elements. Key labels include:

- GLAZED ALUM. WALL SYSTEM
- ALUM. FIN. PROFILE, TYP.
- STONE BASE SYSTEM, TYP.
- COMPOSITE INSULATED METAL PANEL SYSTEM (ON ALUMINUM PROFILES OF SILENT HOOK)

The drawing also features a large arrow pointing to the top of the facade and the text "DR. PHILLIPS CENTER" across the top.

$$1/16'' = 1'-0''$$

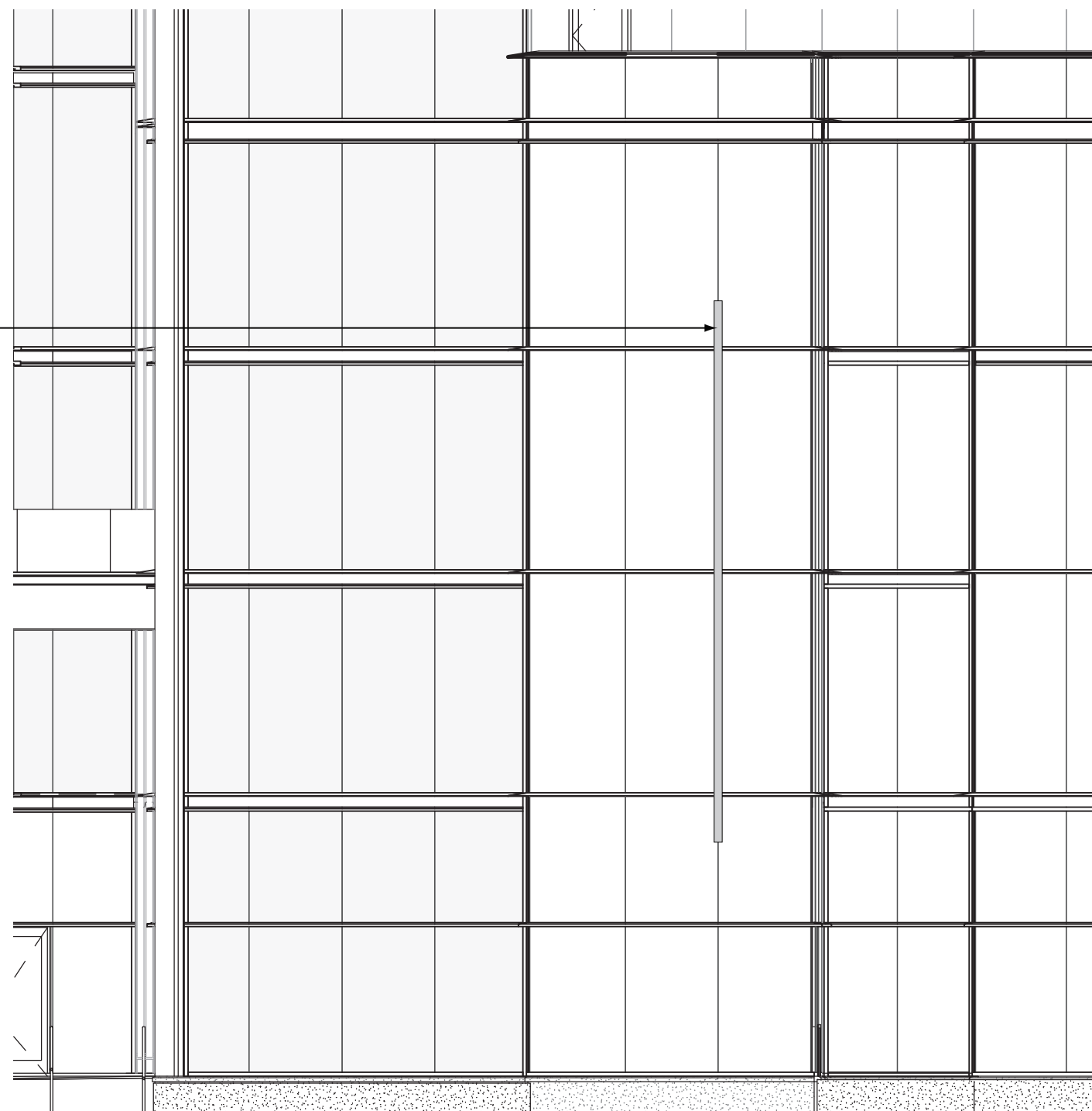
2



DETAIL SIGN ELEVATION

1/8" = 1'-0"

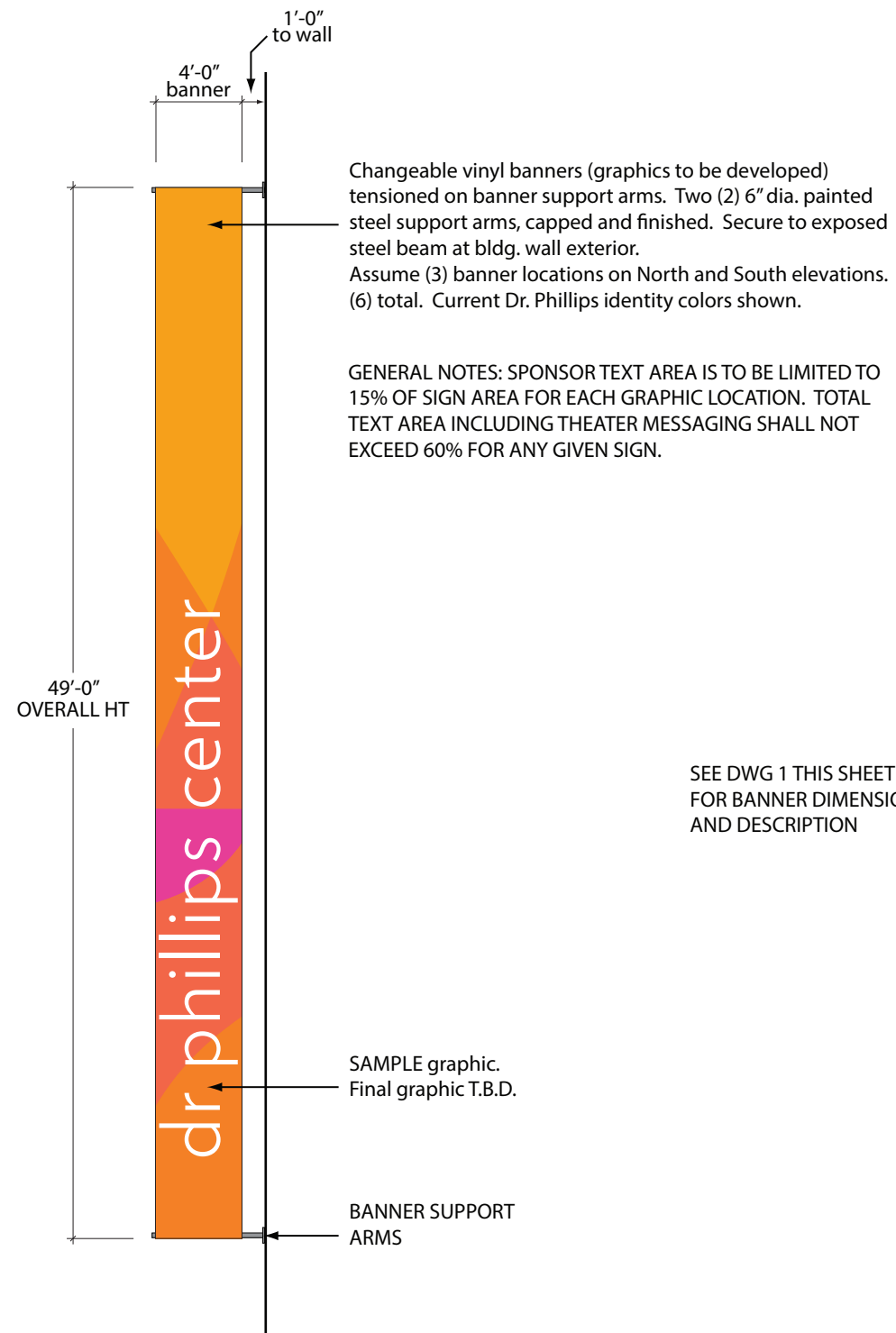
1



DETAIL ELEVATION

1/8" = 1'-0"

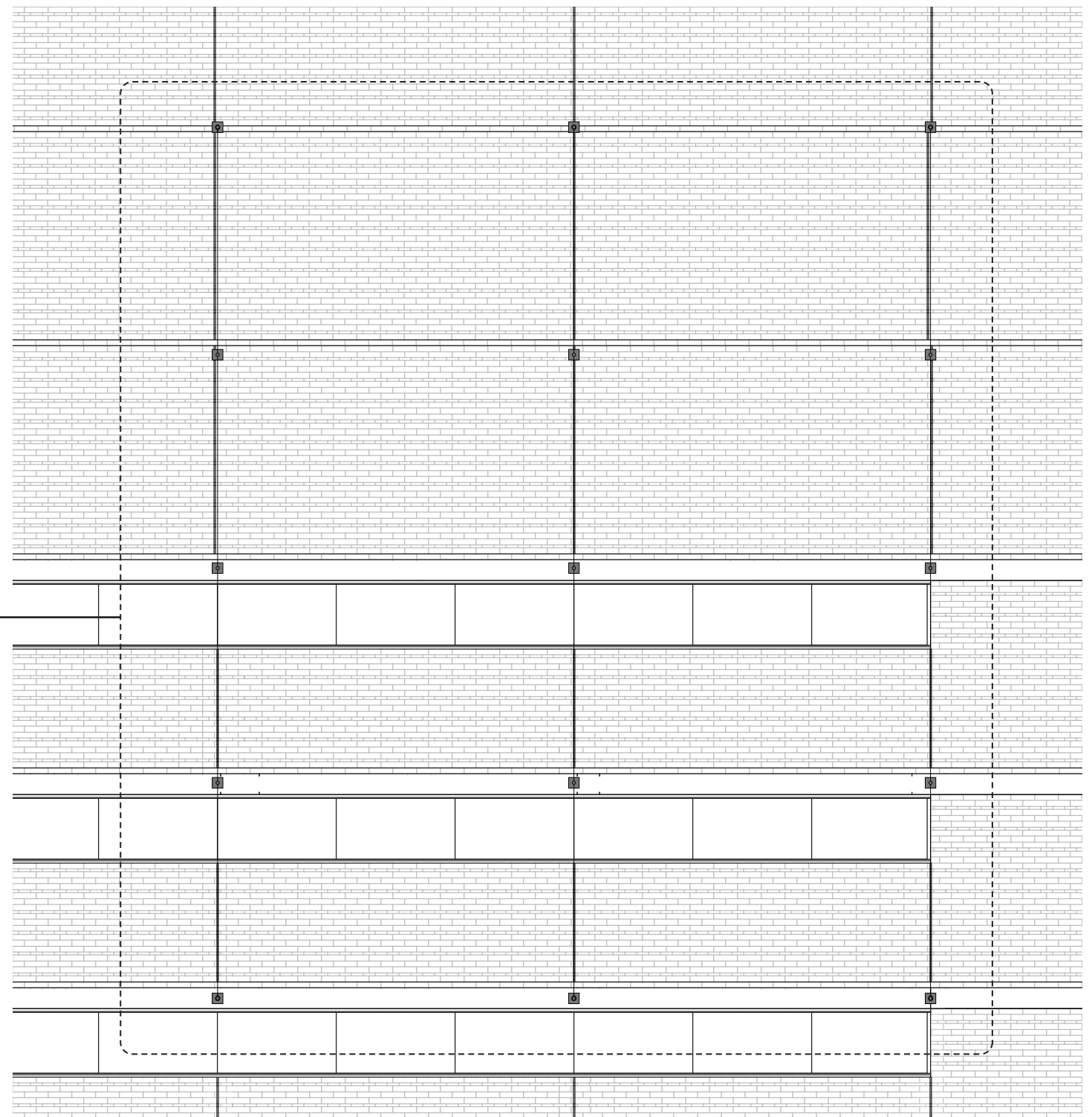
2



BANNER ELEVATION

1/8" = 1'-0"

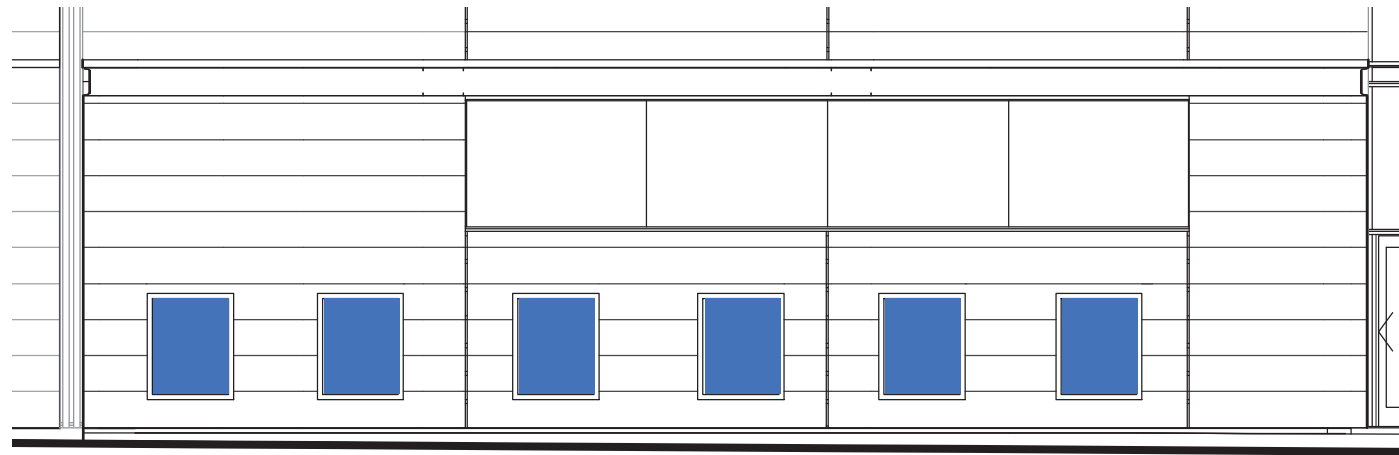
1



BANNER ELEVATION

1/8" = 1'-0"

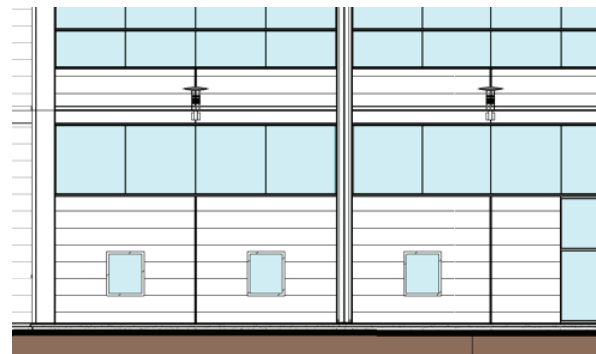
2



POSTER CABINET ELEVATION (NORTH-STAGE 2)

1/4" = 1'-0"

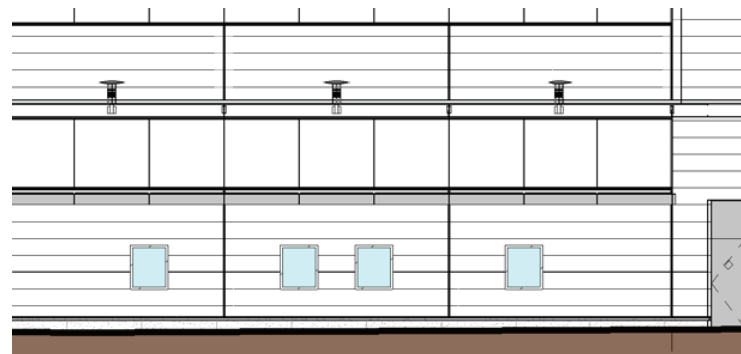
1



POSTER CABINET ELEVATION (SOUTH-STAGE 1)

1/8" = 1'-0"

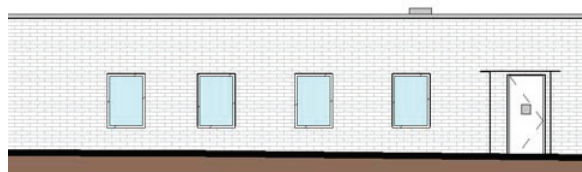
2



POSTER CABINET ELEVATION (SOUTH-STAGE 1)

1/16" = 1'-0"

3

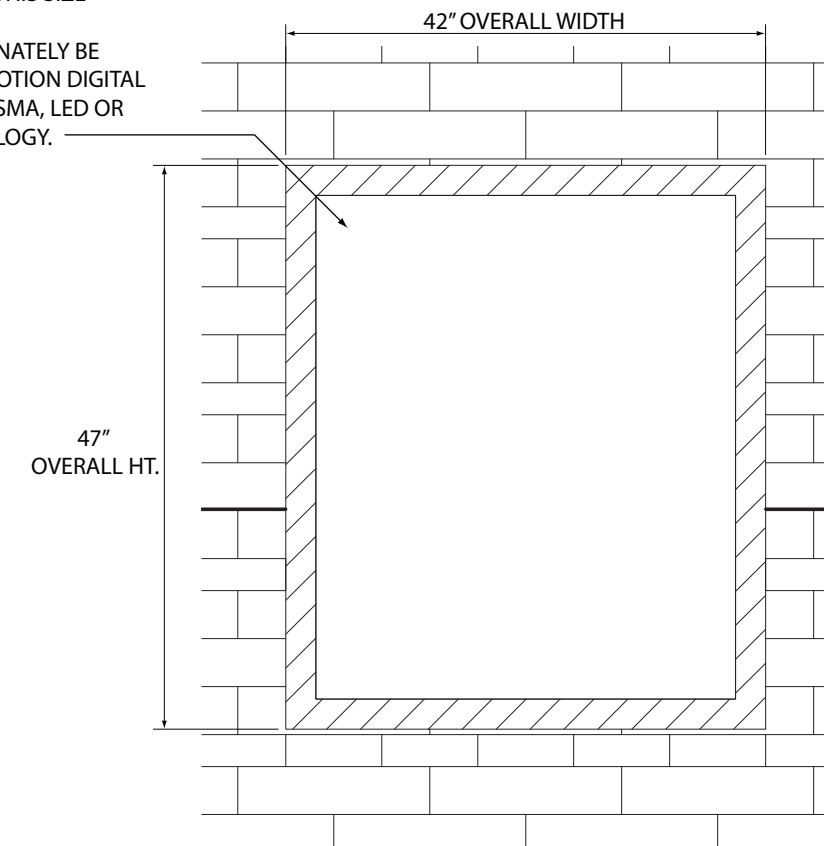


POSTER CABINET ELEVATION (SOUTH-STAGE 1)

1/16" = 1'-0"

4

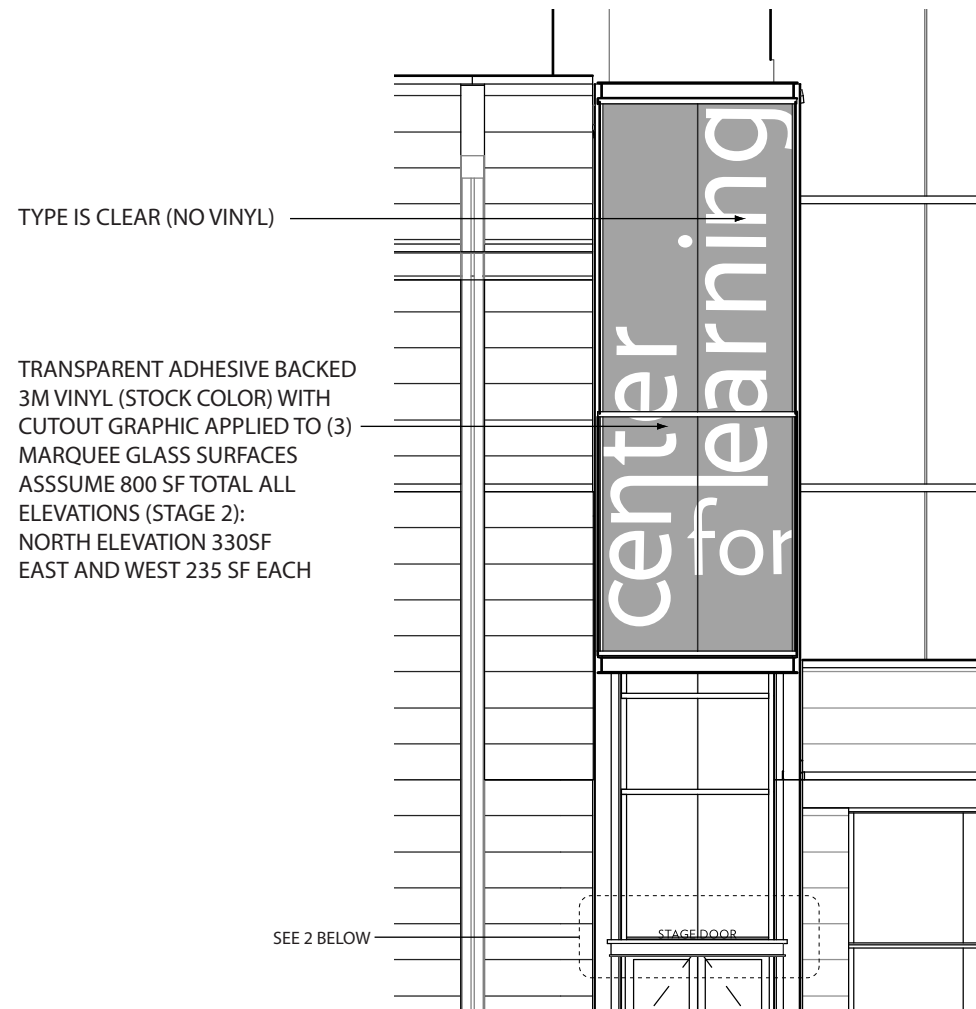
ENCLOSED BACKLIT POSTER CASES
RECESSED FLUSH WITH ADJACENT
BUILDING WALL. ACTIVE AREA 35" X 42".
PAINT FINISH. 17 CASES THIS SIZE
TOTAL (PHASES 1+2).
NOTE: CASES MAY ALTERNATELY BE
INSTALLED WITH FULL MOTION DIGITAL
DISPLAYS UTILIZING PLASMA, LED OR
OTHER SIMILAR TECHNOLOGY.



TYPICAL POSTER CABINET ELEVATION
STAGES 1 AND 2

3/4" = 1'-0"

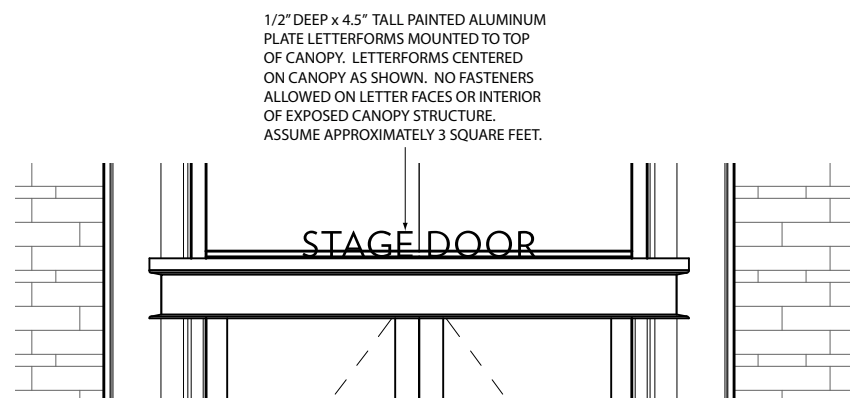
5



ENLARGED ELEV - N MARQUEE (PHASE 1 STAGE 2)

1/8" = 1'-0"

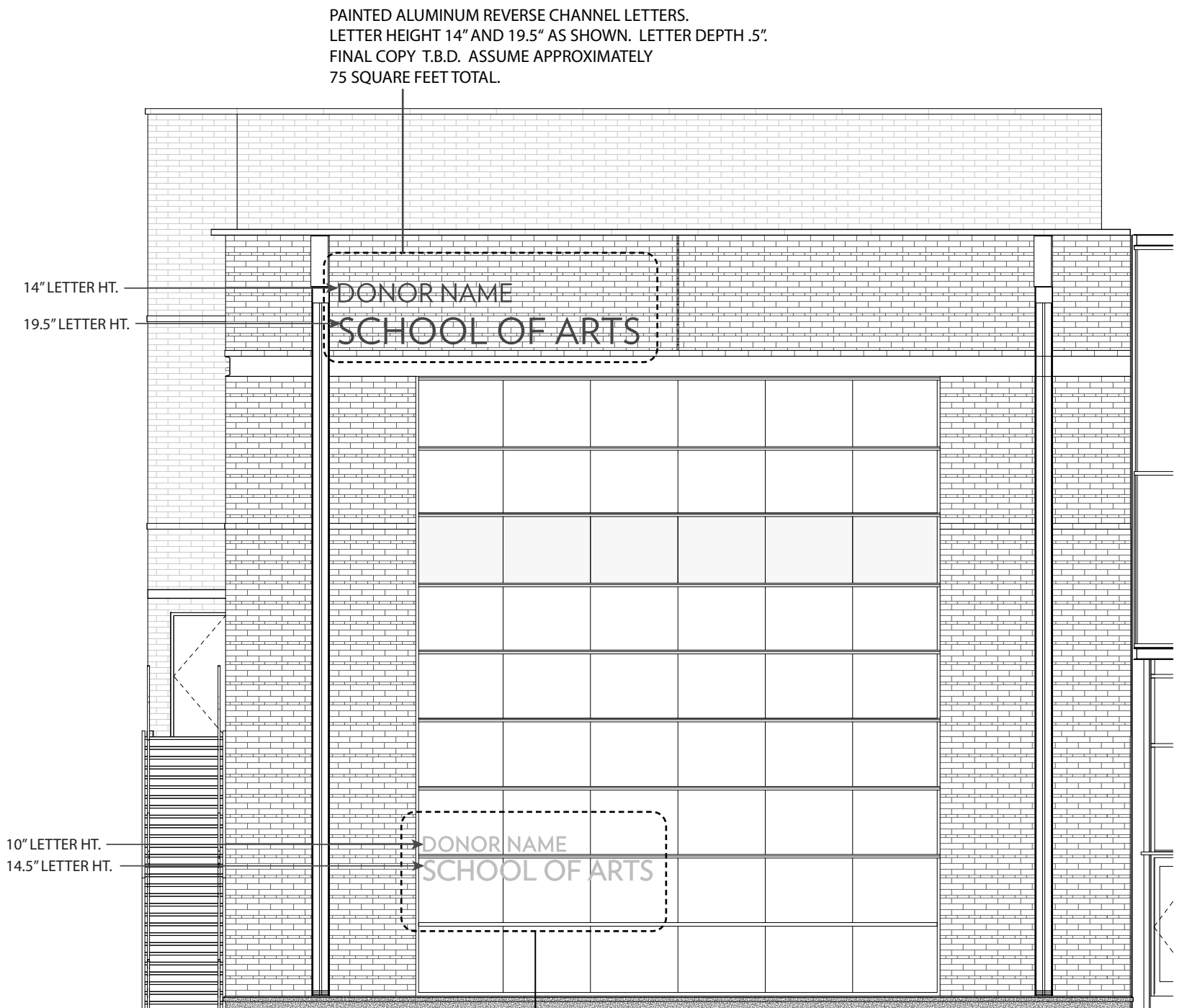
1



ENLARGED ELEV - N MARQUEE SIGNAGE (STAGE 2)

3/8" = 1'-0"

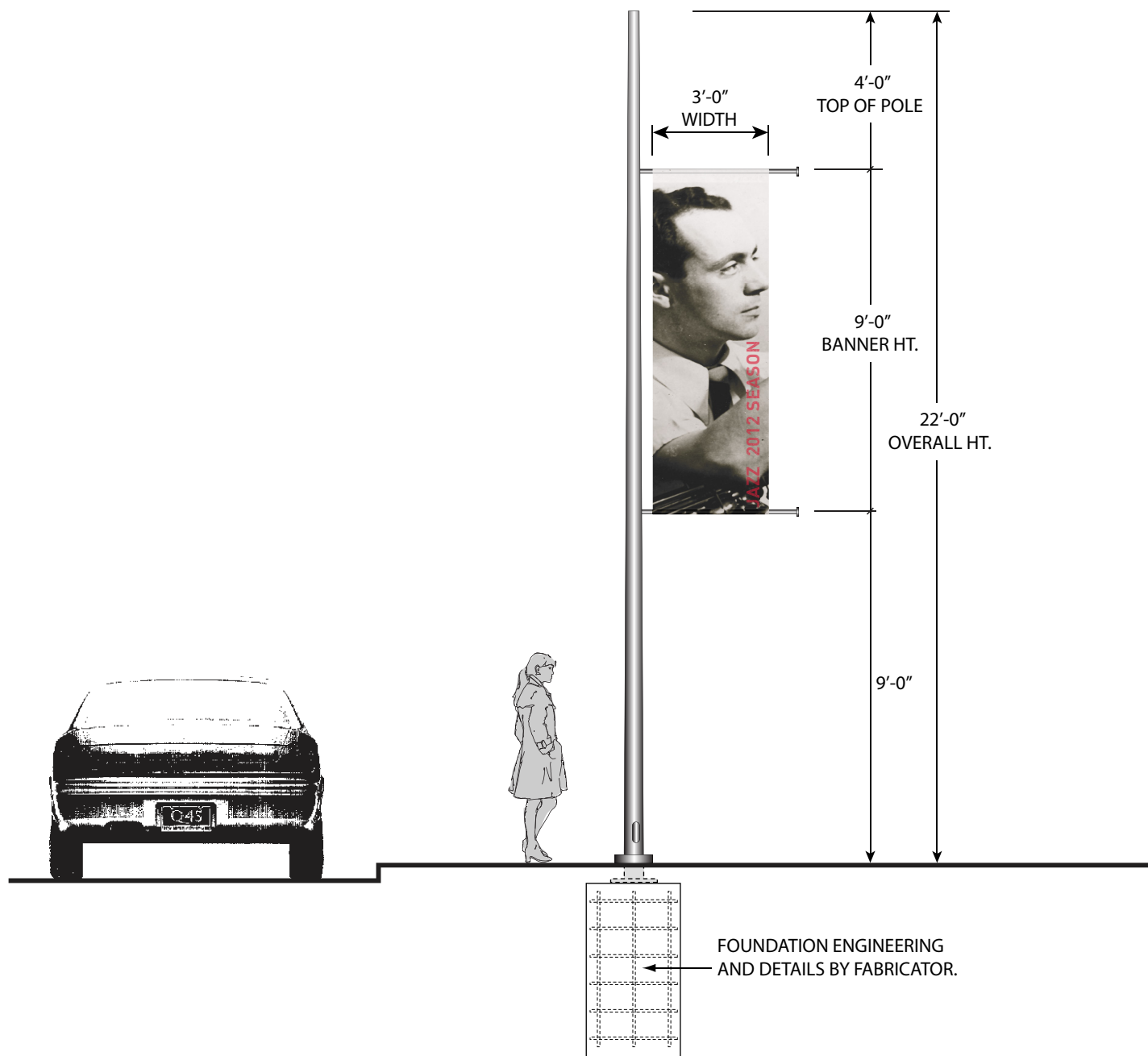
2



REHEARSAL THEATER DETAIL ELEVATION (STAGE 2)

1/8" = 1'-0"

3

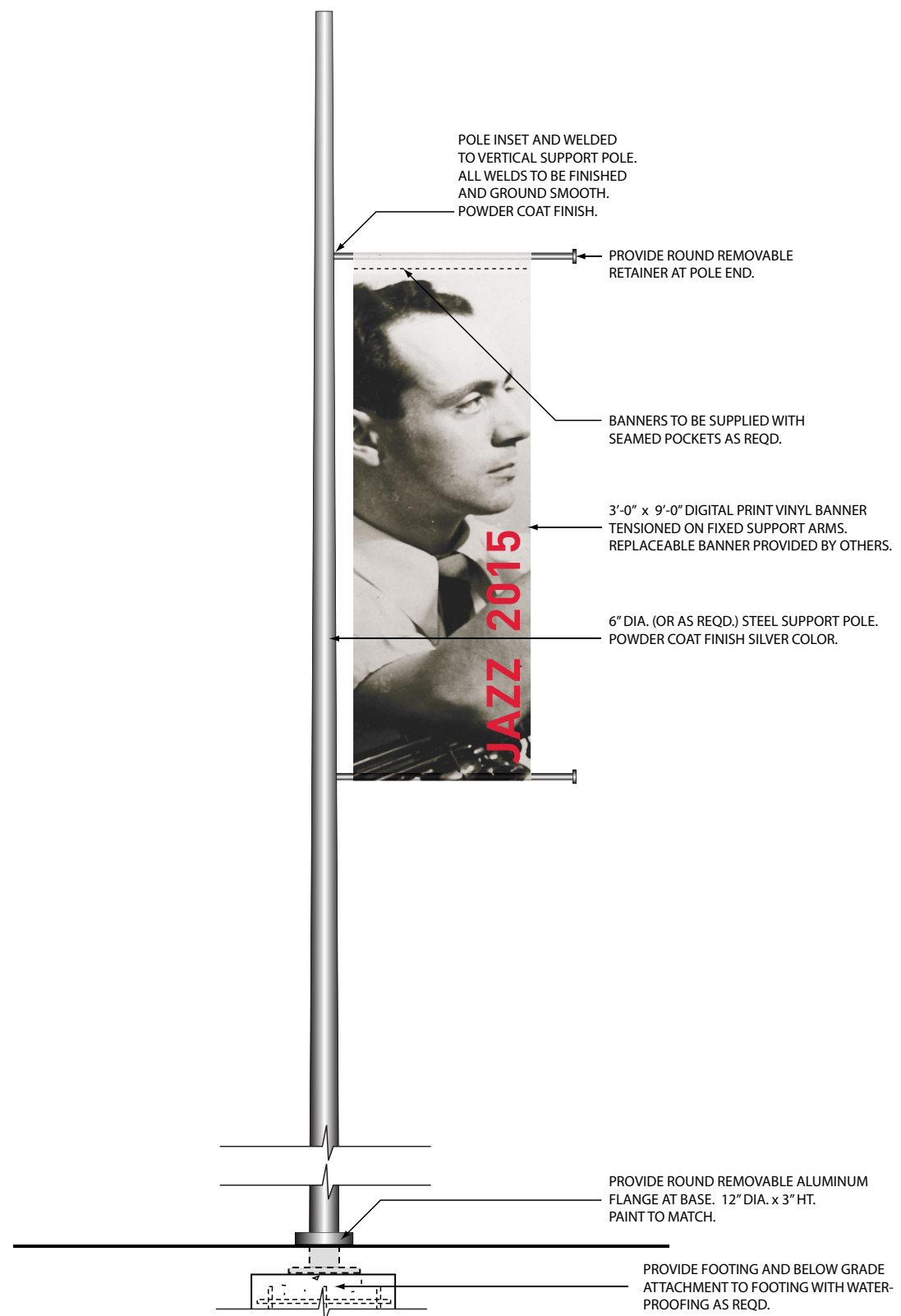


SIGNAGE TOTEM FRONT ELEVATION

1/4" = 1'-0"

1

BARTON MYERS ASSOCIATES, INC. / HKS ARCHITECTS, INC. / BAKER BARRIOS ARCHITECTS, INC.
MURASE ASSOCIATES / HLB LIGHTING DESIGN / SUSSMAN PREJZA & COMPANY, INC.



SIGNAGE TOTEM DETAIL

3/8" = 1'-0"

2

DR PHILLIPS CENTER SITE SIGNAGE
15 JULY 2014

S-16

NOTES

PROVIDE SCREENED VENTILATION HOLES AS NECESSARY

CABINETS ARE TO BE LOCKABLE WITH CONCEALED HARDWARE

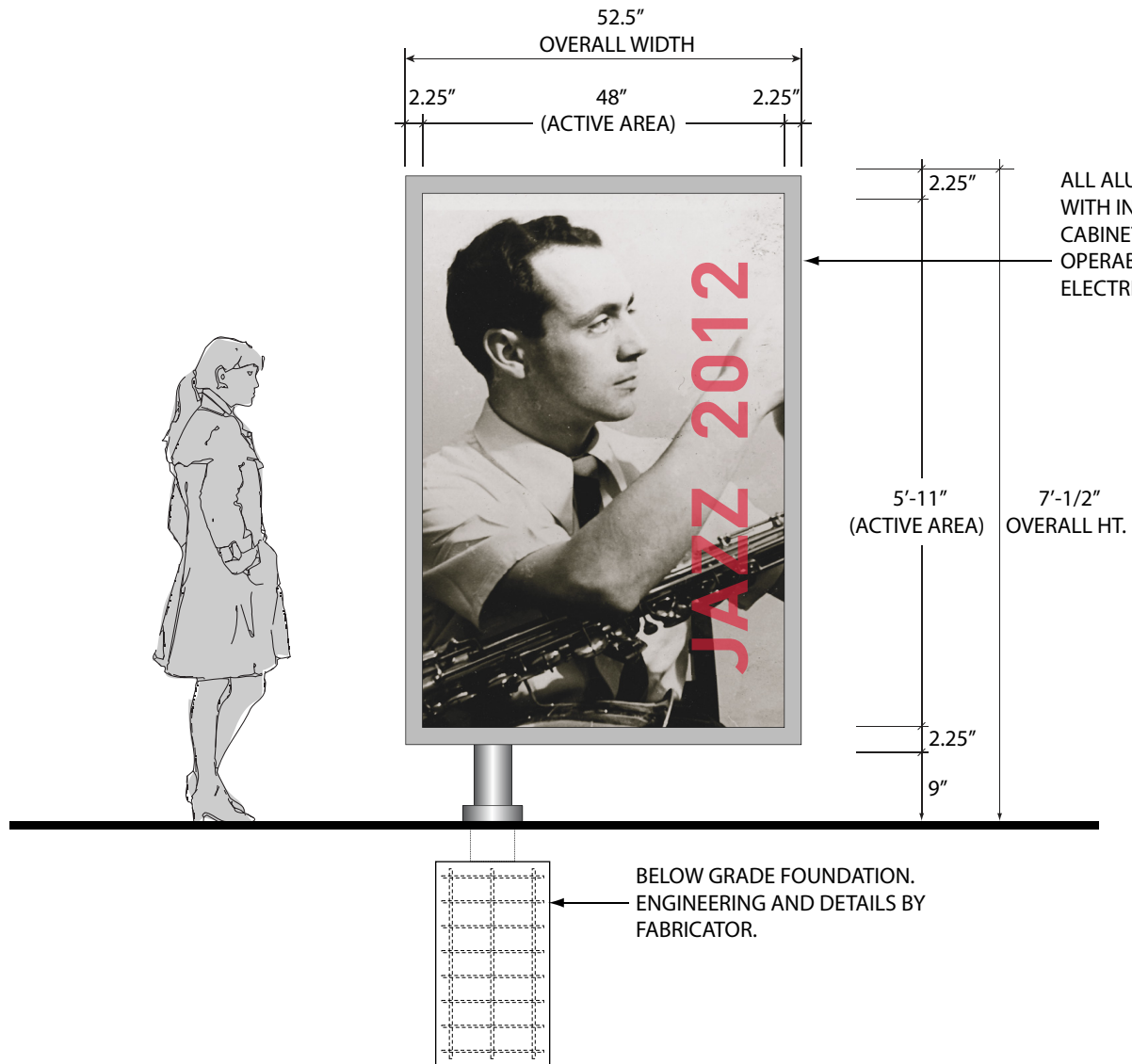
PROVIDE PRICING FOR LED AND FLUORESCENT ILLUMINATION OPTIONS

ALL HARDWARE INCLUDING HINGES, LOCKS AND FASTENERS IS TO BE NON-CORROSIVE MATERIALS AND ALLOYS. POWDER COAT FINISH TO BE USED ON ALL PAINTED SURFACES.

NO EXPOSED FASTENERS ALLOWED ON CABINET FACE OR EXTERIOR

PROVIDE WATERPROOFING ON SIGN BASE AS NECESSARY

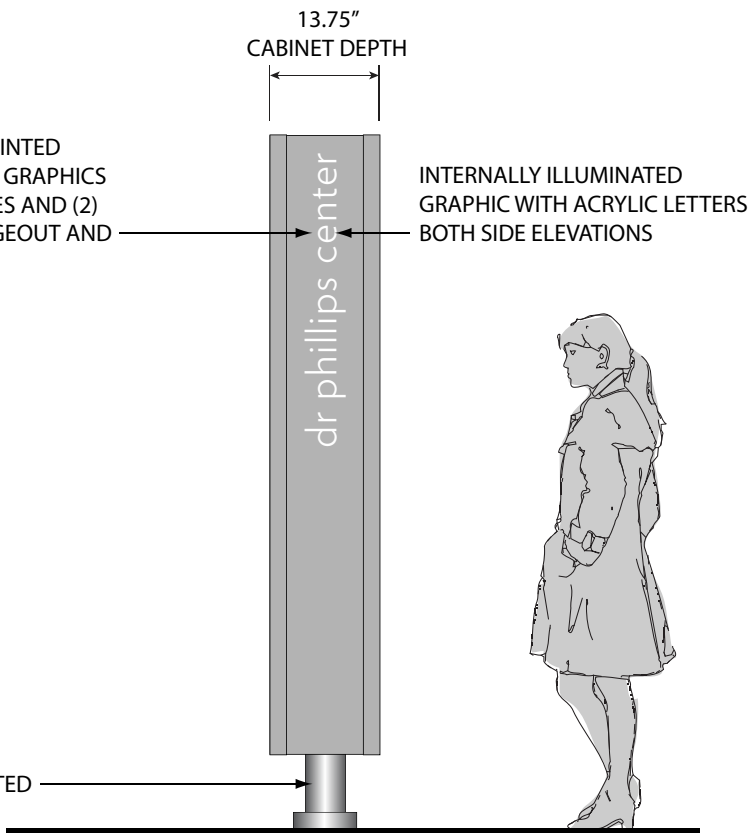
GENERAL NOTES: LIGHTING HOURS OF PEDESTRIAN SIGNS AND POSSIBLE FUTURE LED SCREENS ARE TO BE LIMITED TO 2:00 A.M. AND WILL BE CONTROLLED BY TIMER/SENSOR. SIGNAGE IS TO BE LIMITED TO DIRECTIONAL (MAP) INFORMATION AND USES DEFINED AS "ONSITE". ONSITE USES ARE DEFINED AS ADVERTISEMENT OF ANY SERVICE OR PRODUCT OFFERED FOR SALE OR USE ON DPAC SITE AND ADJACENT FUTURE DEVELOPMENT AREA. SPONSOR TEXT AREA IS TO BE LIMITED TO 20% OF SIGN AREA FOR EACH GRAPHIC LOCATION. TOTAL TEXT AREA INCLUDING THEATER MESSAGING SHALL NOT EXCEED 40% FOR ANY GIVEN SIGN.



PEDESTRIAN SIGN FRONT ELEVATION

1/2" = 1'-0"

1



PEDESTRIAN SIGN SIDE ELEVATION

1/2" = 1'-0"

2

NOTES

PROVIDE SCREENED VENTILATION HOLES AS NECESSARY

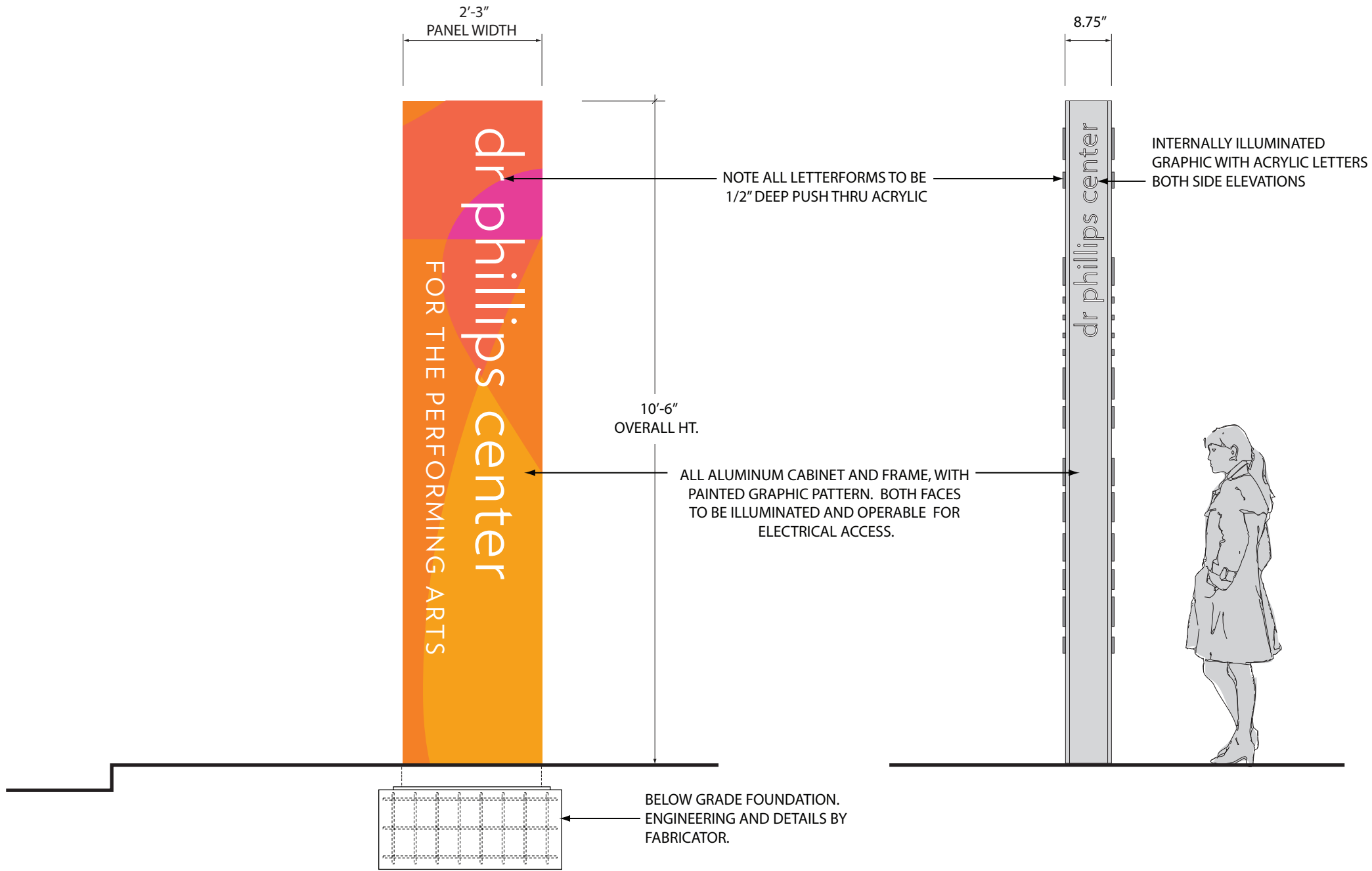
CABINETS ARE TO BE LOCKABLE WITH CONCEALED HARDWARE

ALL HARDWARE INCLUDING HINGES, LOCKS AND FASTENERS IS TO BE NON-CORROSIVE MATERIALS AND ALLOYS. POWDER COAT FINISH TO BE USED ON ALL PAINTED SURFACES.

NO EXPOSED FASTENERS ALLOWED ON CABINET FACE OR EXTERIOR

PROVIDE WATERPROOFING ON SIGN BASE AS NECESSARY

ALUMINUM SIGN FACES SHOWN AS CONTINUOUS ARE TO BE SEAMLESS



SMALL ID SIGN FRONT ELEVATION

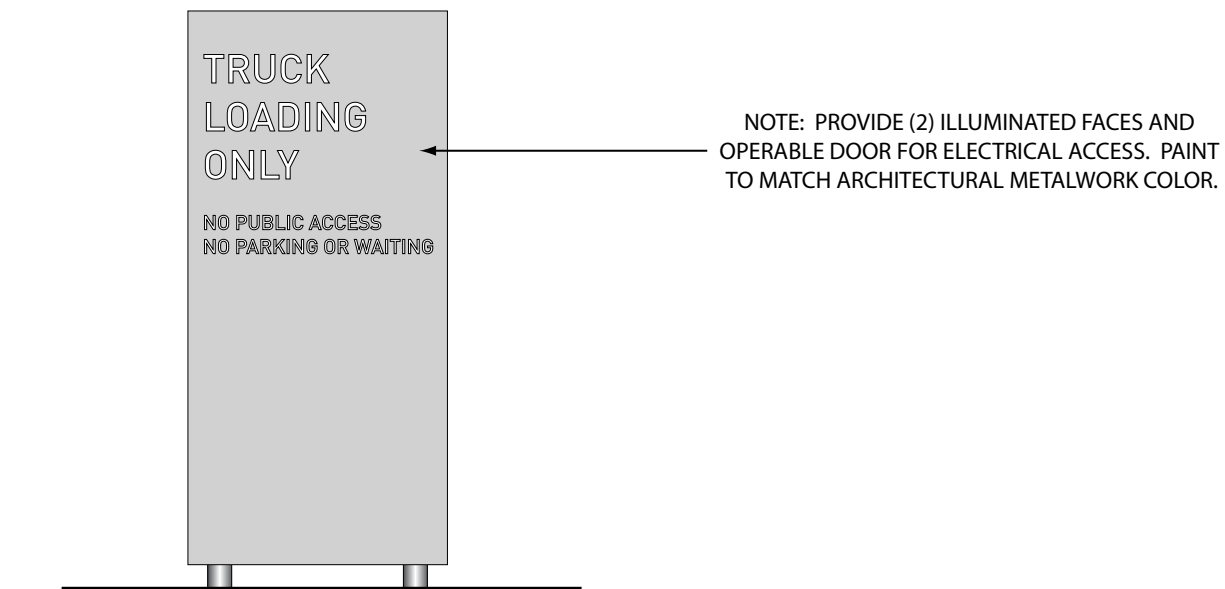
1/2" = 1'-0"

1

SMALL ID SIGN SIDE ELEVATION

1/2" = 1'-0"

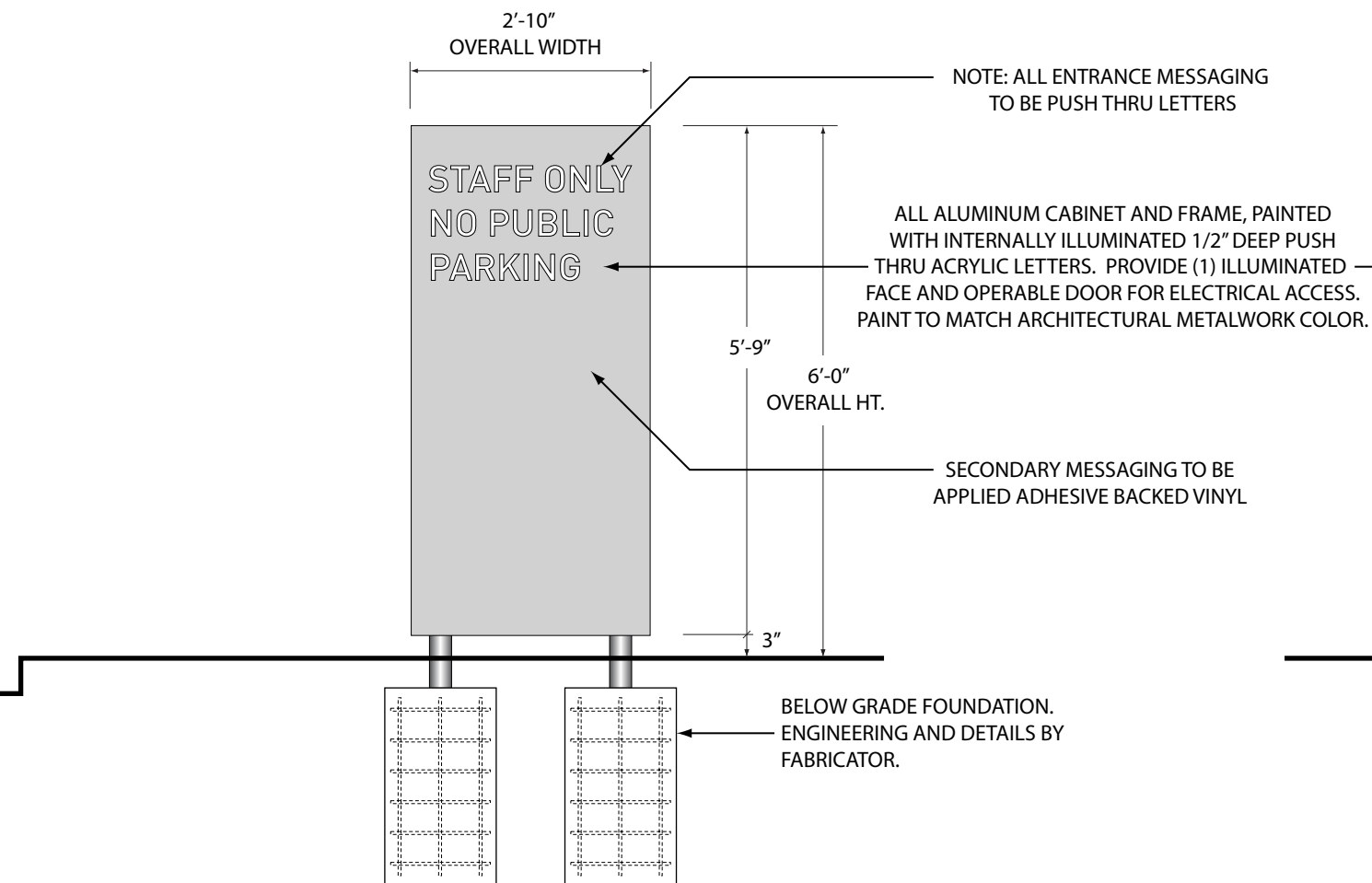
2



LOADING DOCK SAMPLE MESSAGING

1/2" = 1'-0"

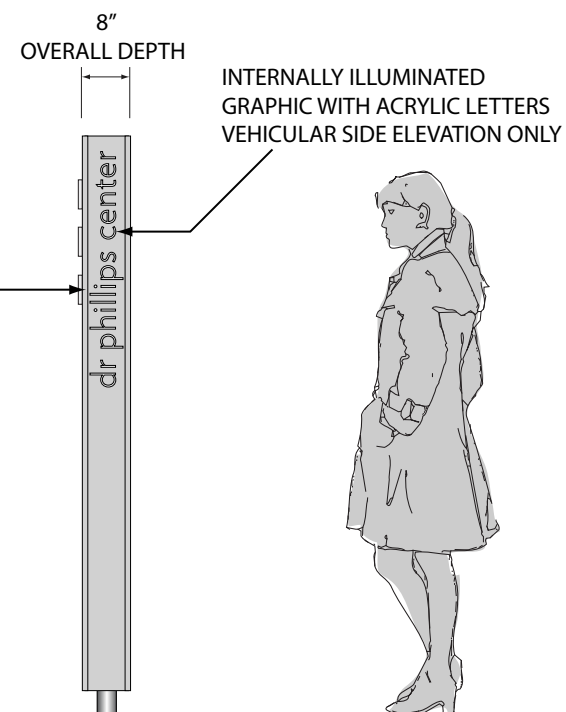
3



ONSITE PARKING SIGN FRONT ELEVATION

1/2" = 1'-0"

1



ONSITE PARKING SIGN SIDE ELEVATION

1/2" = 1'-0"

2

NOTES

PROVIDE SCREENED VENTILATION HOLES AS NECESSARY

CABINETS ARE TO BE LOCKABLE WITH CONCEALED STAINLESS HARDWARE

PROVIDE PRICING FOR LED AND FLUORESCENT ILLUMINATION OPTIONS

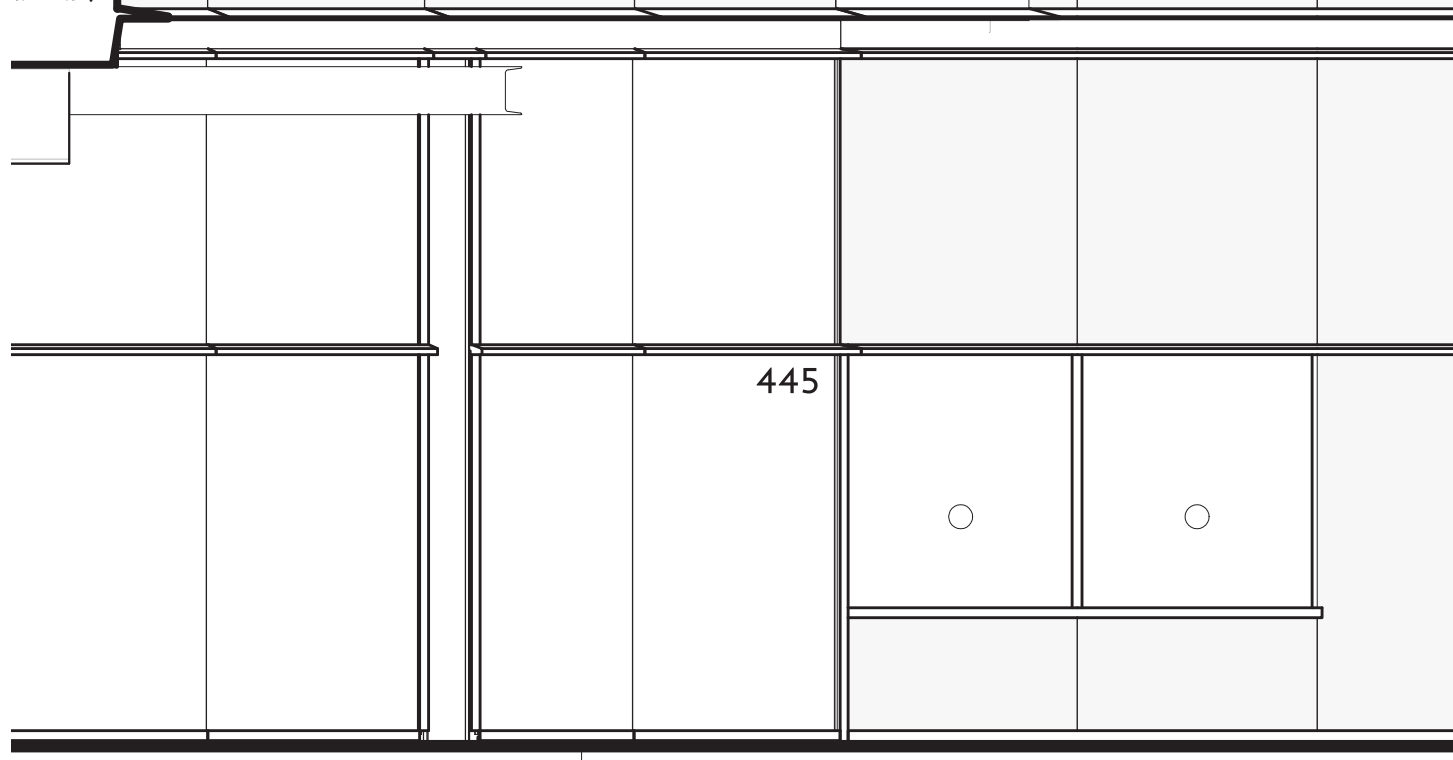
ALL HARDWARE INCLUDING HINGES, LOCKS AND FASTENERS IS TO BE NON-CORROSIVE MATERIALS AND ALLOYS. POWDER COAT FINISH TO BE USED ON ALL PAINTED SURFACES.

ALL STRUCTURAL MEMBERS INTERIOR AND EXTERIOR TO BE ALUMINUM

NO EXPOSED FASTENERS ALLOWED ON CABINET FACE OR EXTERIOR

PROVIDE WATERPROOFING ON SIGN BASE AS NECESSARY

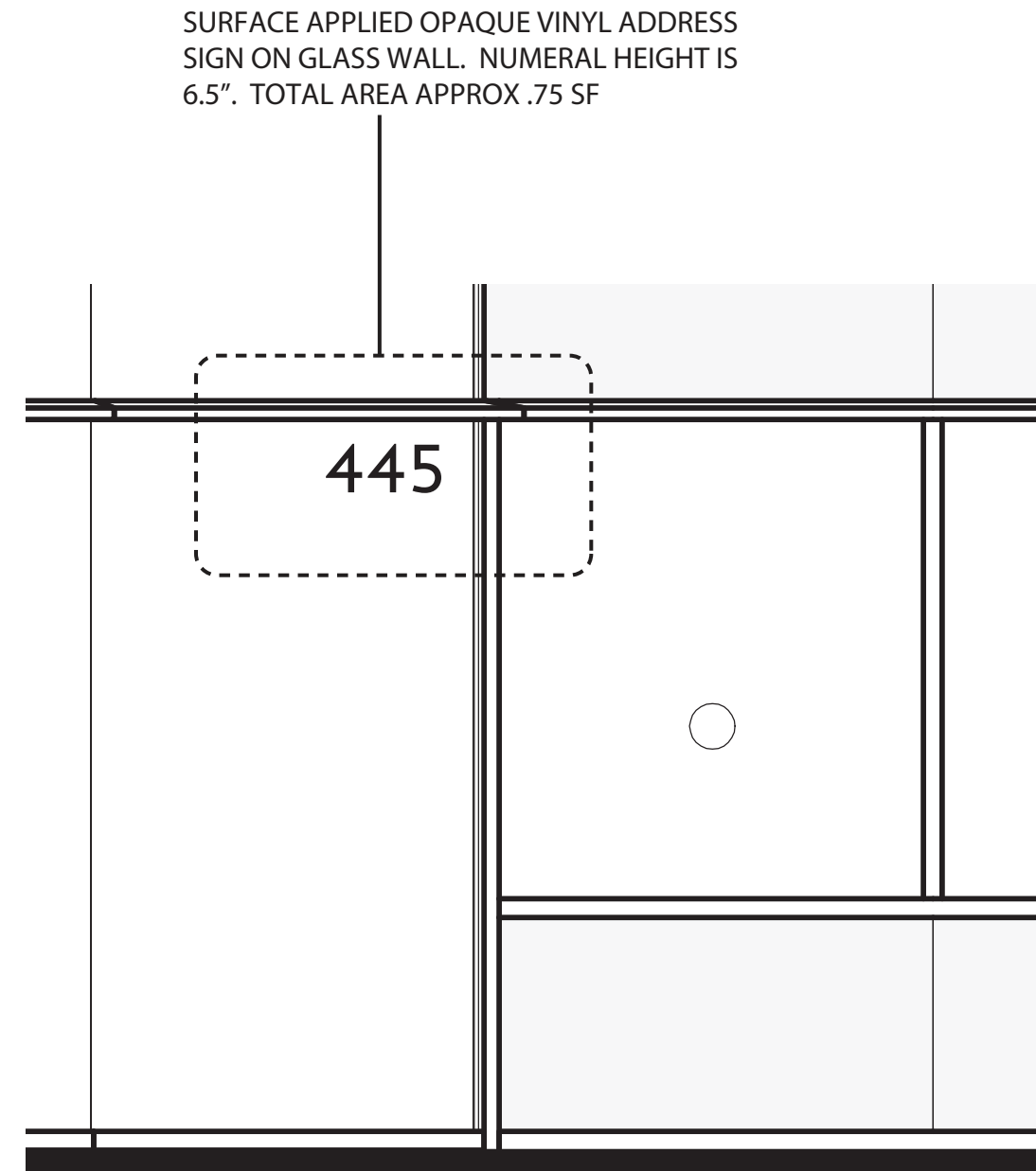
ALUMINUM SIGN FACES SHOWN AS CONTINUOUS ARE TO BE SEAMLESS



ENLARGED WEST ELEVATION-MAIN ENTRANCE

1/4" = 1'-0"

1

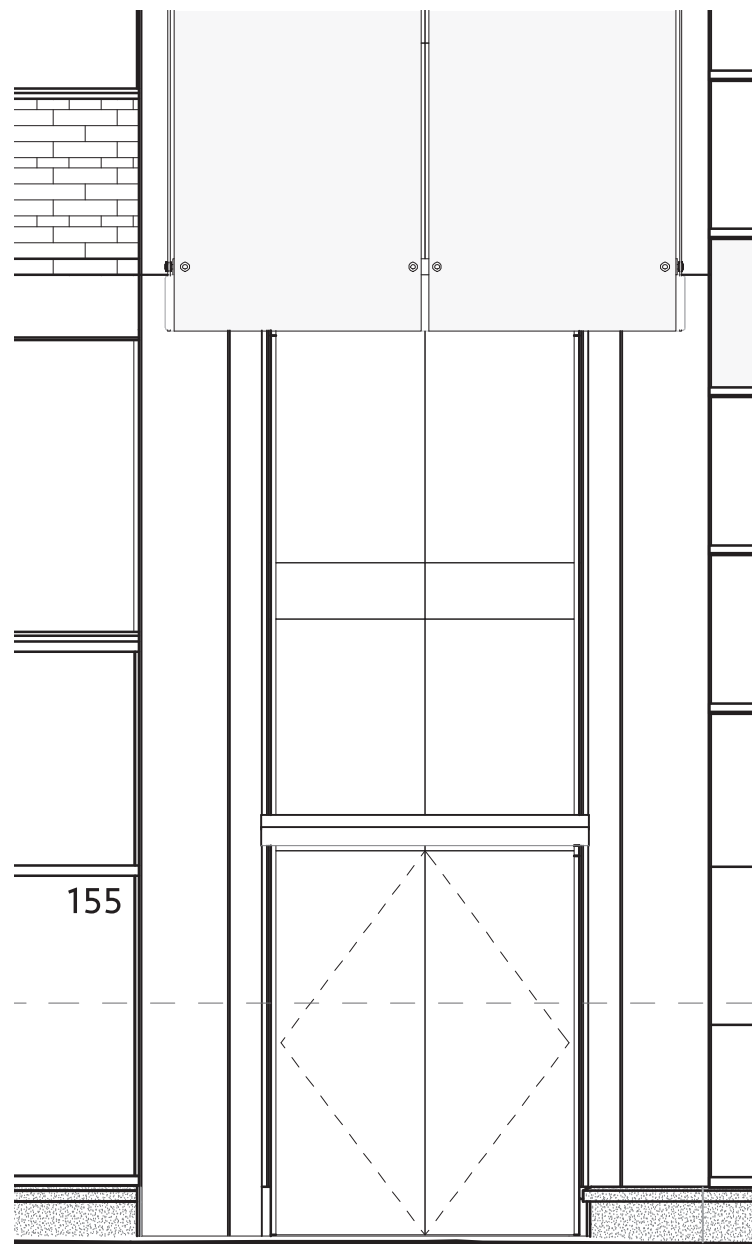


SURFACE APPLIED OPAQUE VINYL ADDRESS SIGN ON GLASS WALL. NUMERAL HEIGHT IS 6.5". TOTAL AREA APPROX .75 SF

ENLARGED WEST ELEVATION-DETAIL MAIN ENTRANCE

1/2" = 1'-0"

2

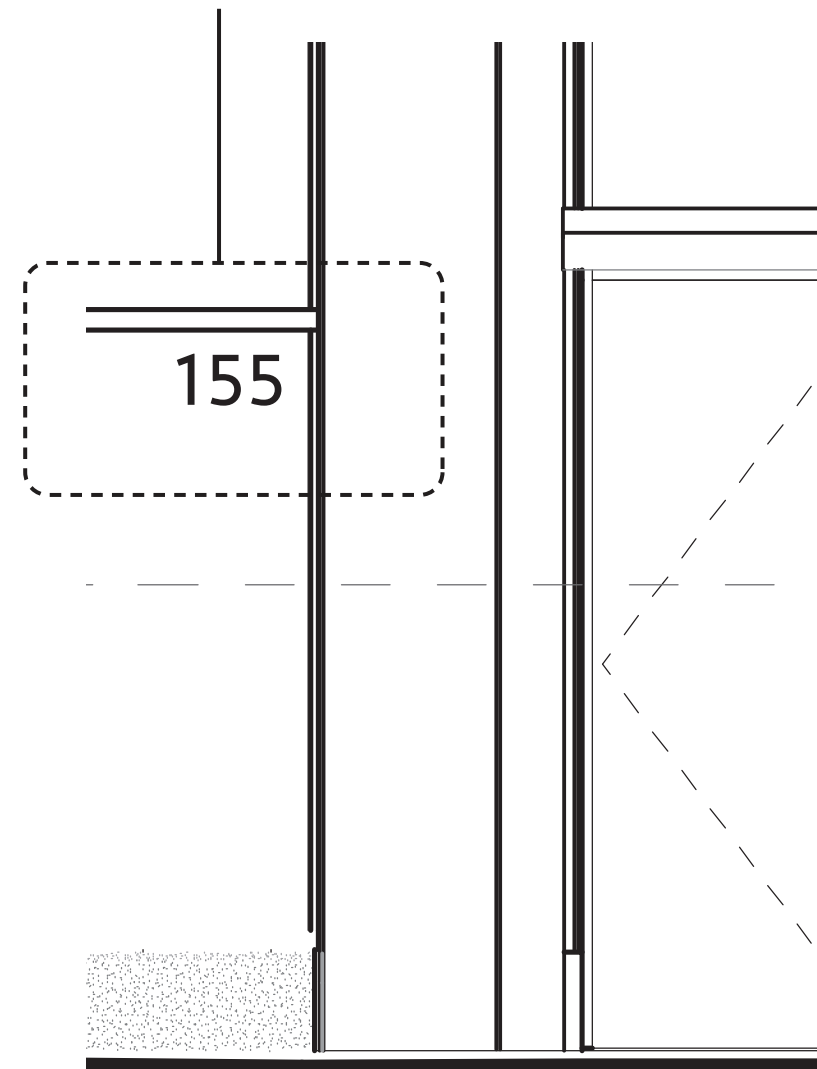


BOH SOUTH MARQUEE ENLARGED ELEVATION

1/4" = 1'-0"

1

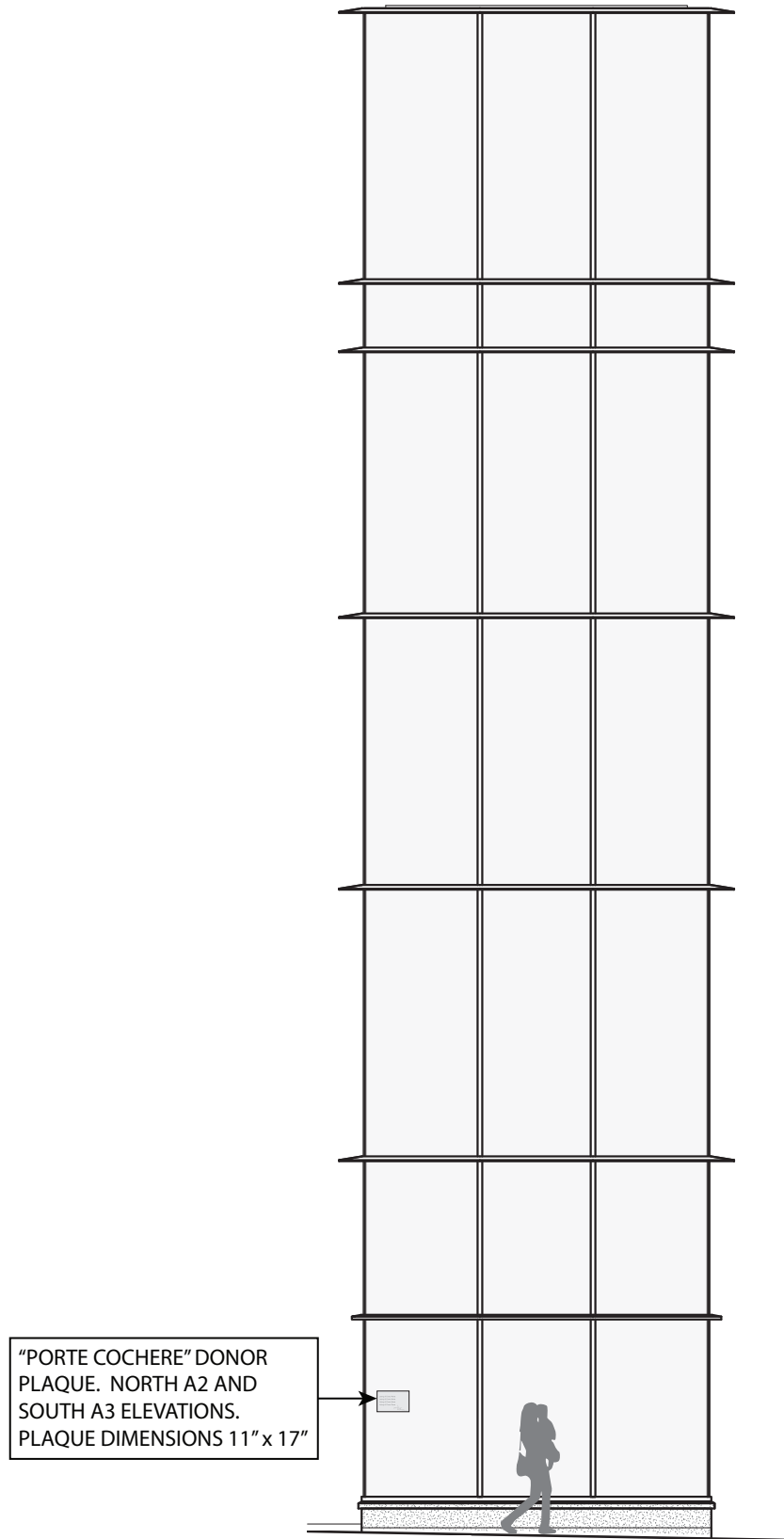
SURFACE APPLIED OPAQUE VINYL ADDRESS
SIGN ON GLASS WALL. NUMERAL HEIGHT IS
6.5". TOTAL AREA APPROX .75 SF



BOH SOUTH MARQUEE DETAIL ELEVATION

1/2" = 1'-0"

2

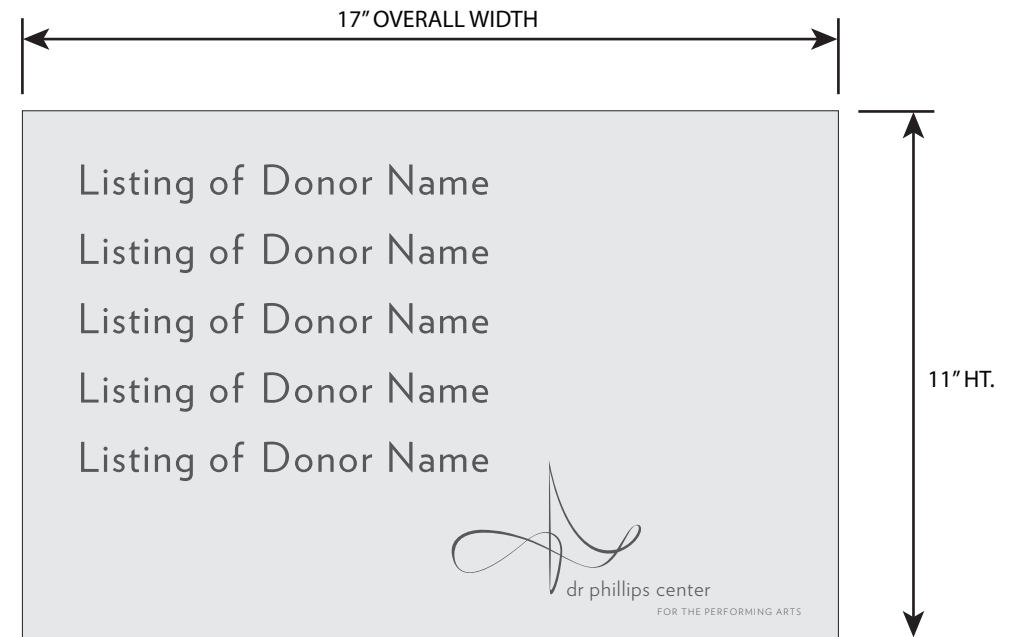


"PORTE COCHERE" DONOR
PLAQUE. NORTH A2 AND
SOUTH A3 ELEVATIONS.
PLAQUE DIMENSIONS 11" x 17"

BANQUET STAIR - ENLARGED NORTH AND SOUTH ELEVATIONS
SIGN "C" ELEVATION

1/8" = 1'-0"

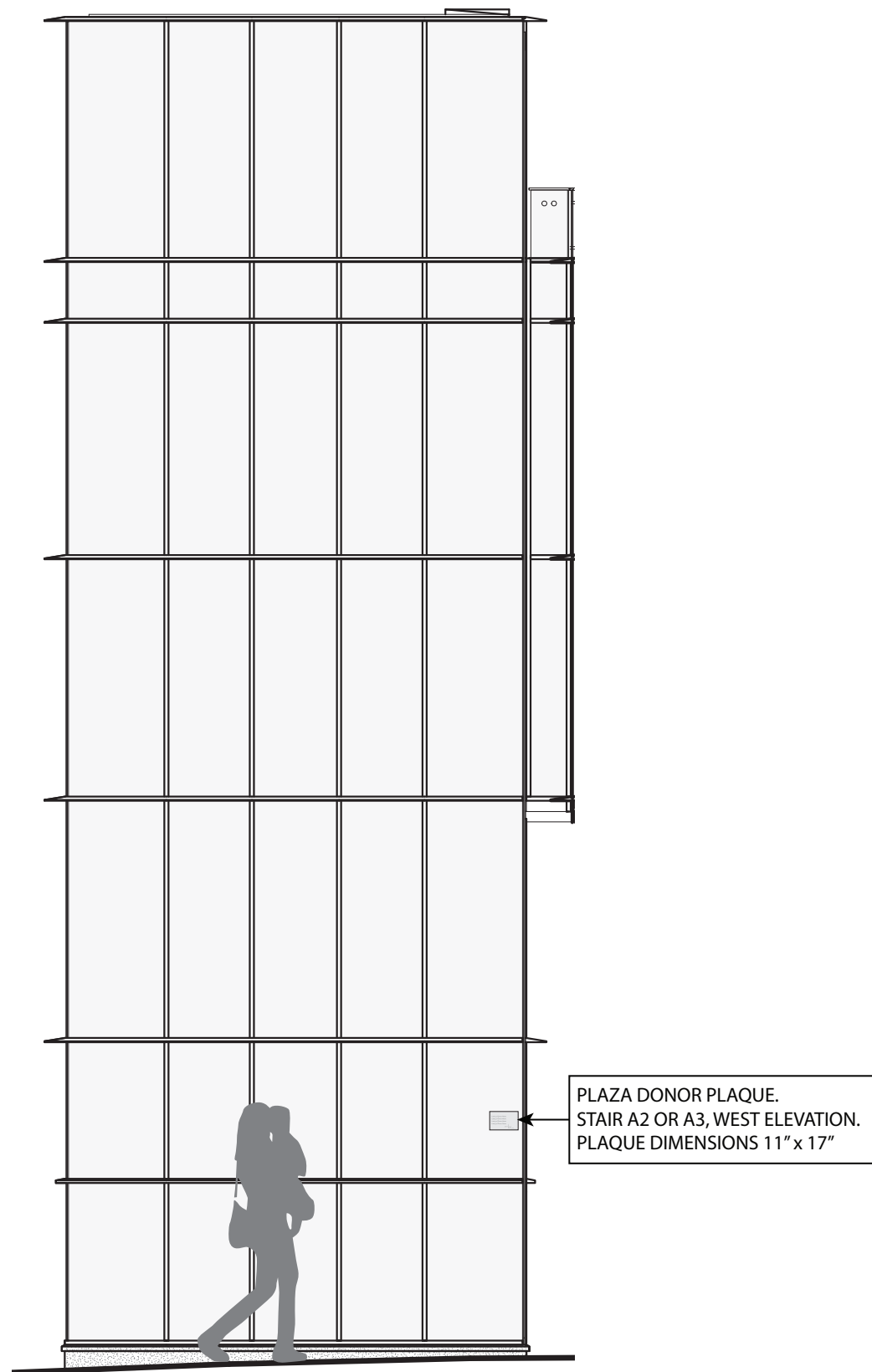
1



PANEL DETAIL

3" = 1'-0"

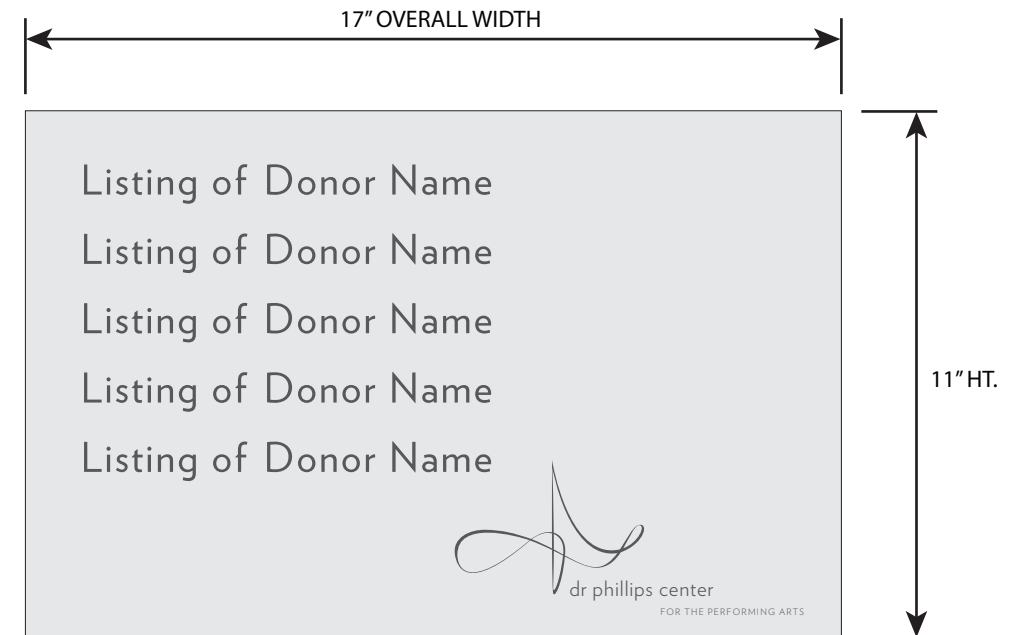
2



BANQUET STAIR - ENLARGED WEST ELEVATION
SIGN "D" ELEVATION

1/8" = 1'-0"

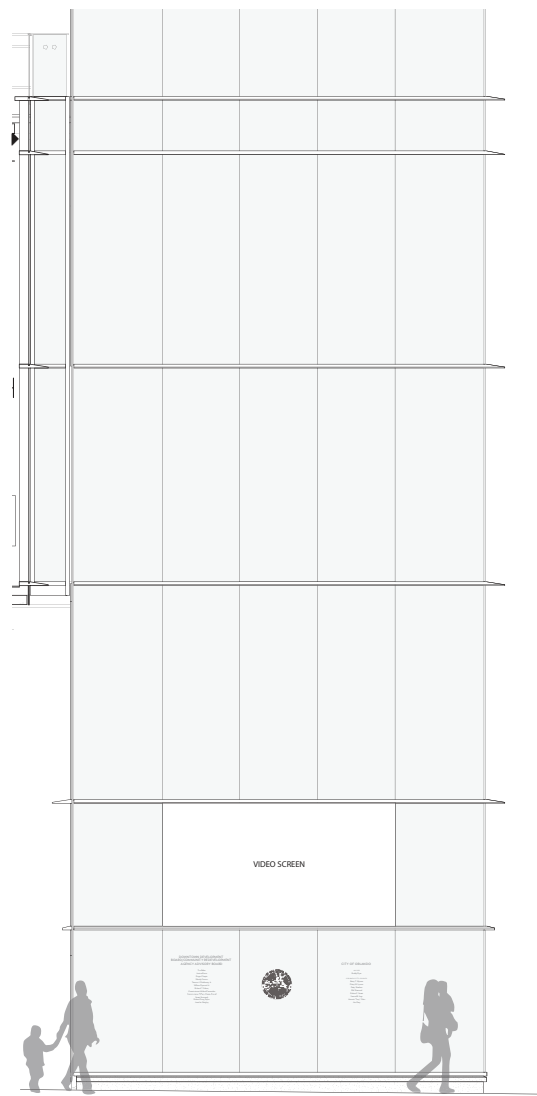
1



PANEL DETAIL

3" = 1'-0"

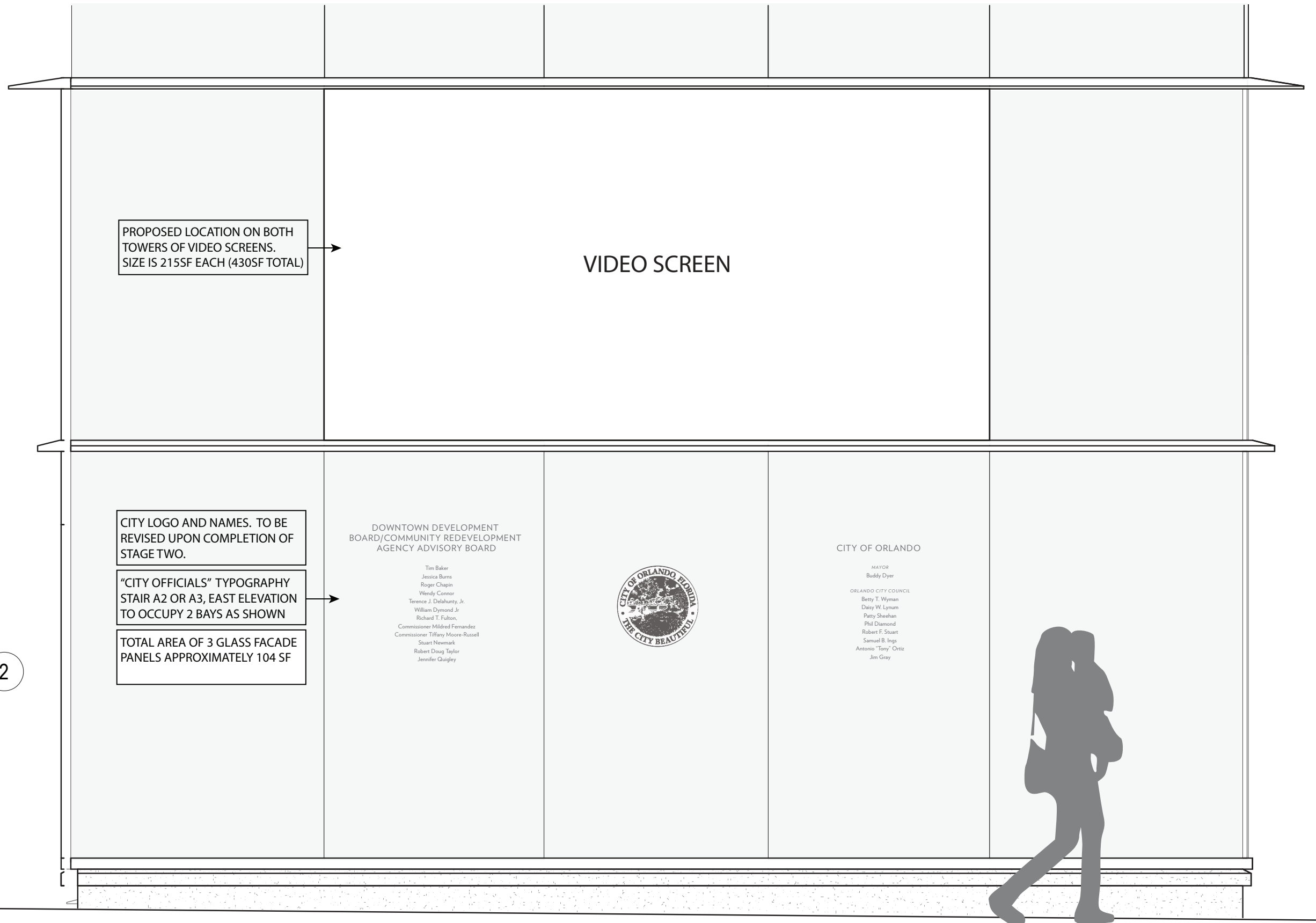
2



BANQUET STAIR SOUTH TOWER
CONTEXT ELEVATION

3/32" = 1'-0"

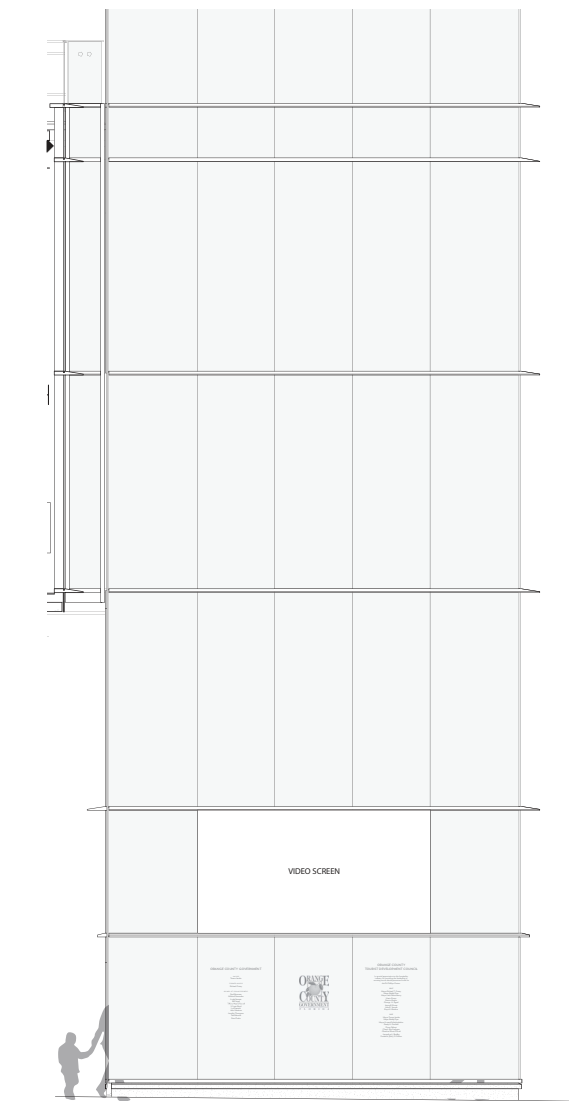
2



BANQUET STAIR SOUTH TOWER - ENLARGED EAST ELEVATION
SIGN "E" ELEVATION

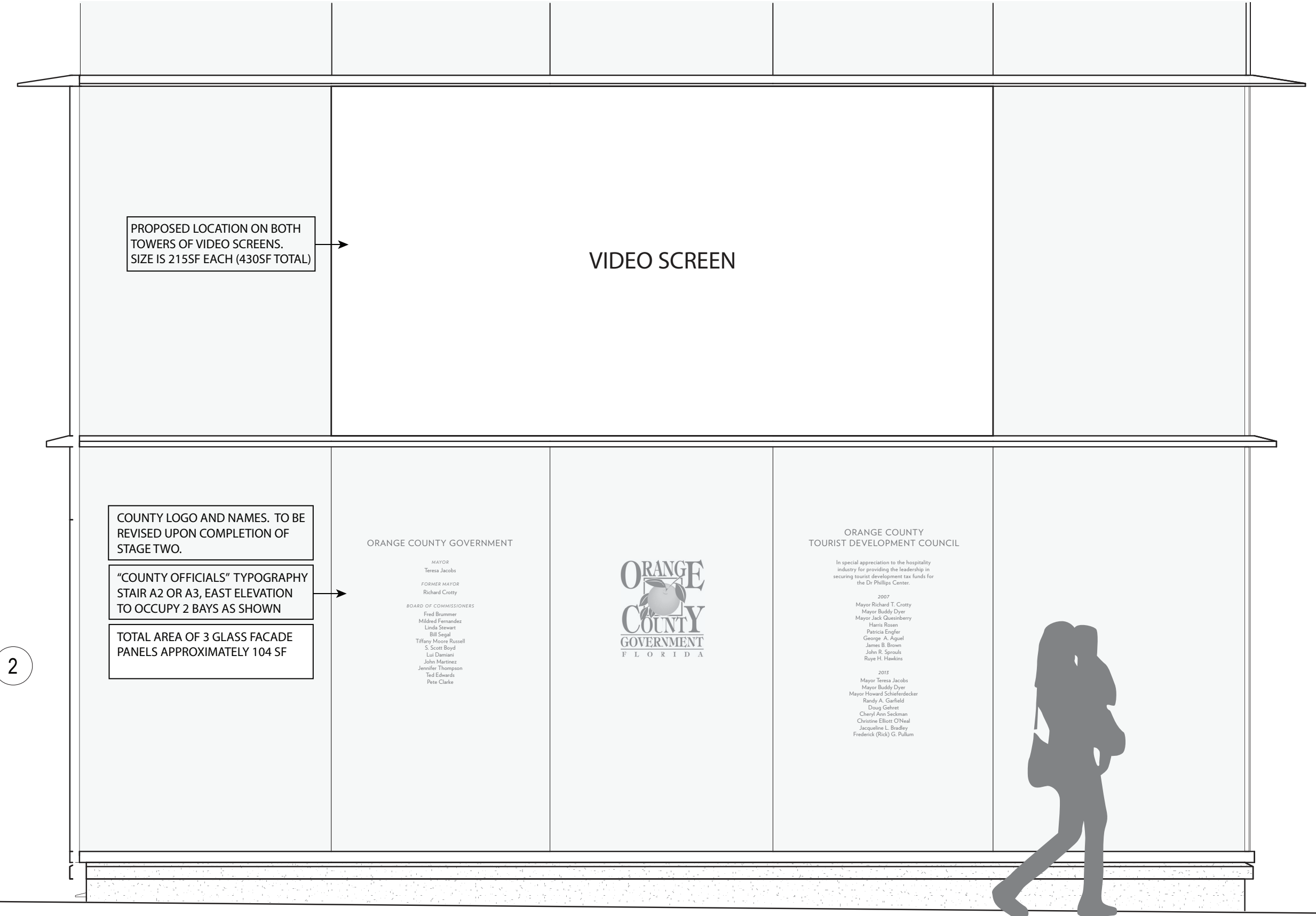
1/2" = 1'-0"

1



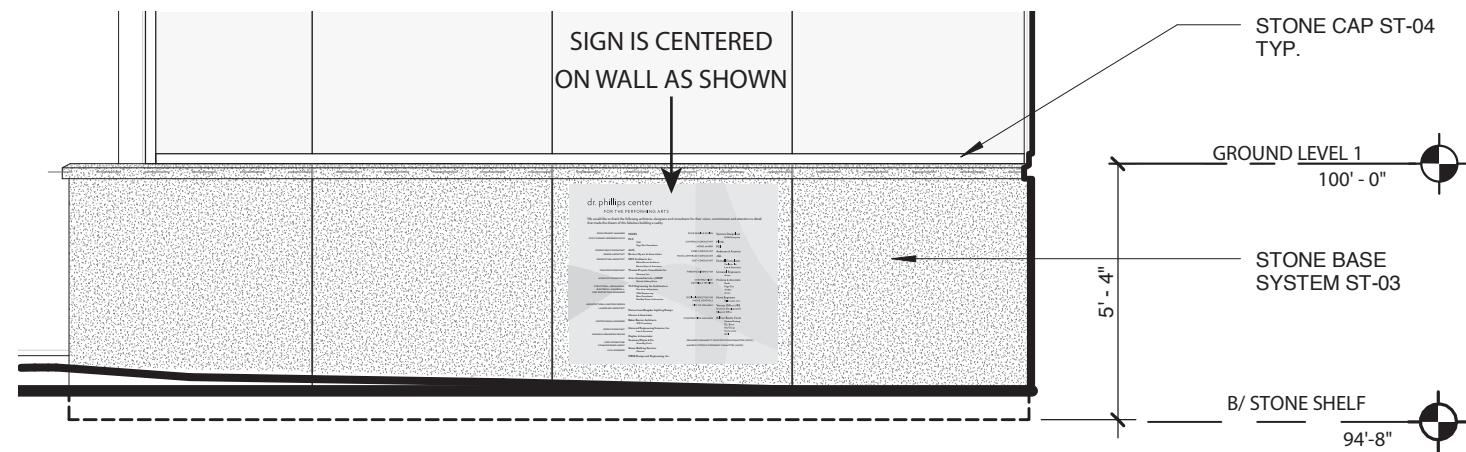
BANQUET STAIR NORTH TOWER
CONTEXT ELEVATION

3/32" = 1'-0"

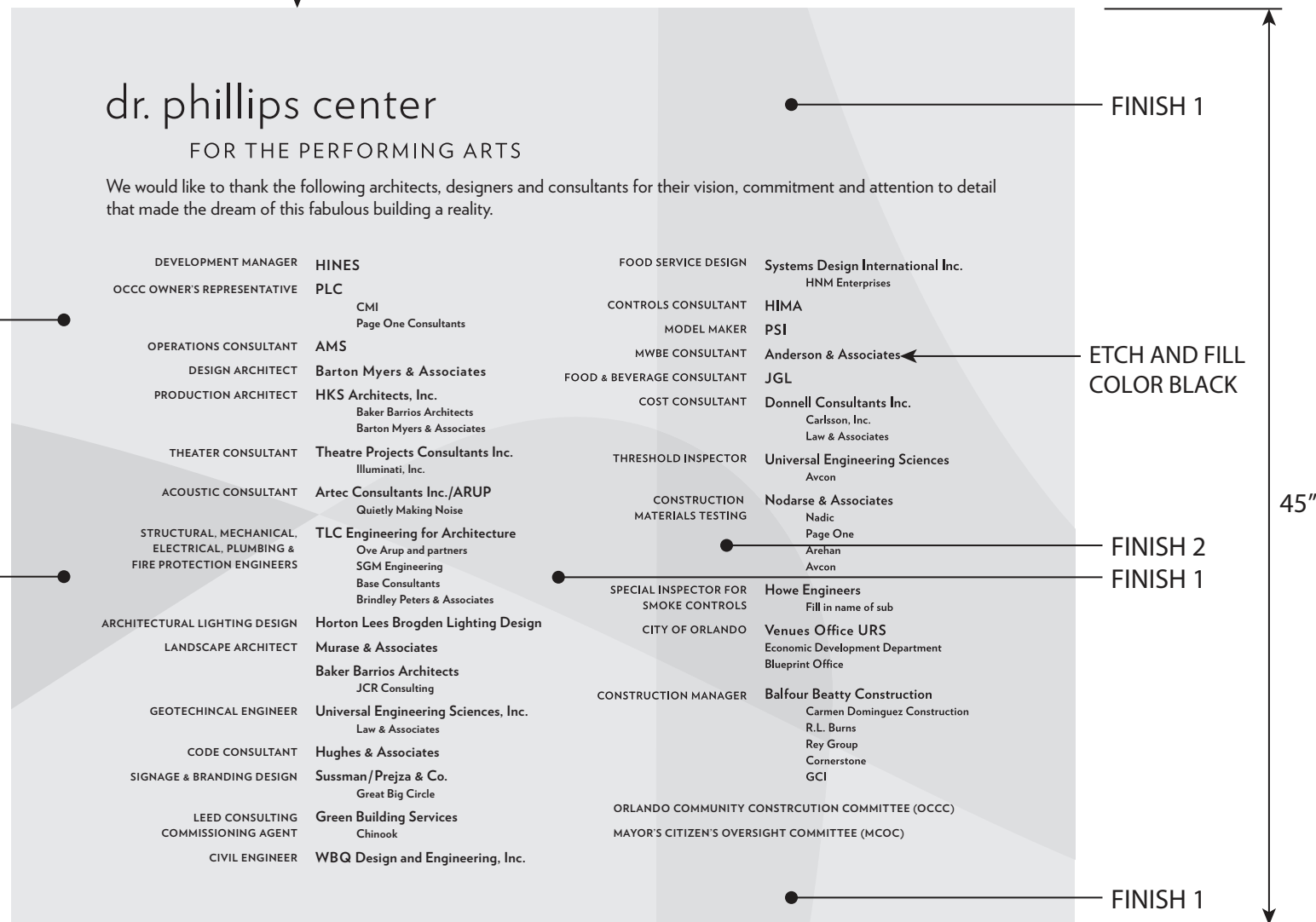
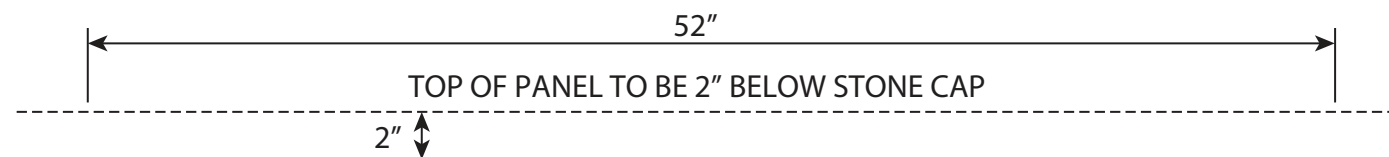


BANQUET STAIR NORTH TOWER - ENLARGED EAST ELEVATION
SIGN "E" ELEVATION

1/2" = 1'-0"

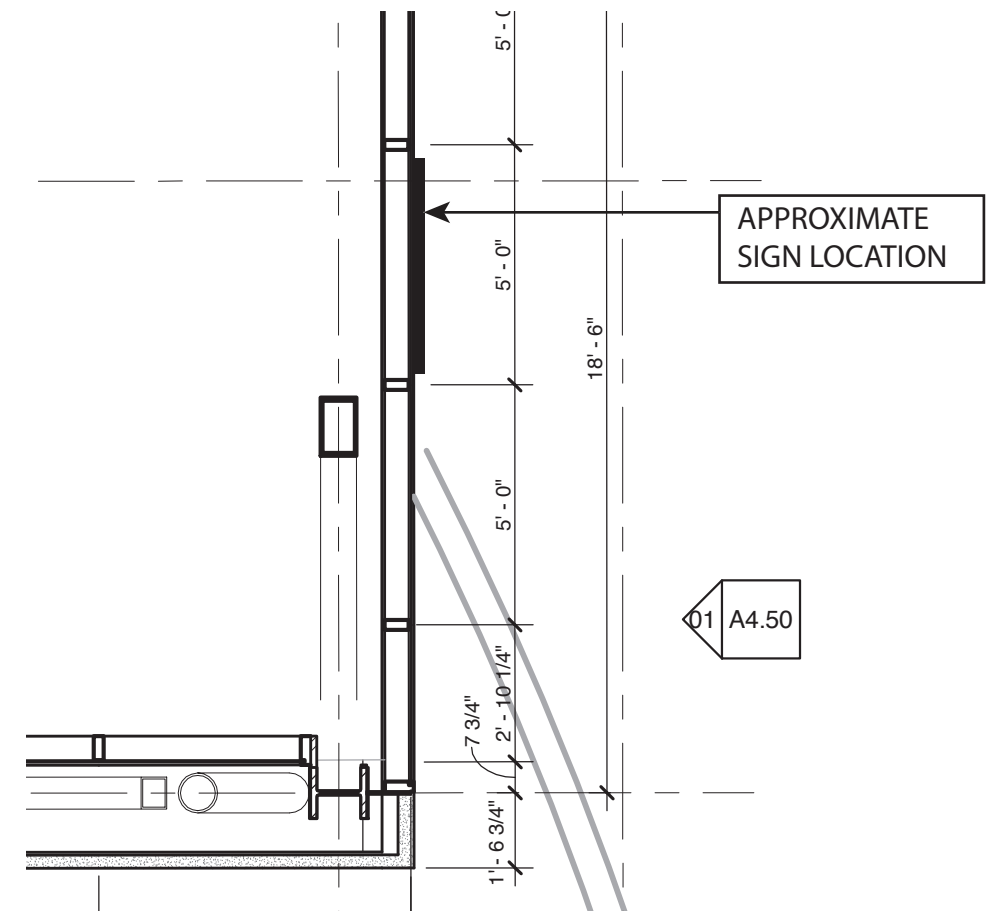


MENS TOWER ELEVATION DETAIL AT GRADE
SCALE: 1/4" = 1'-0"



PLAQUE ELEVATION DETAIL
SCALE: 1-1/2" = 1'-0"

BARTON MYERS ASSOCIATES, INC. / HKS ARCHITECTS, INC. / BAKER BARRIOS ARCHITECTS, INC.
MURASE ASSOCIATES / HLB LIGHTING DESIGN / SUSSMAN PREJZA & COMPANY, INC.



MENS TOWER PLAN DETAIL AT GRADE
SCALE: 1/4" = 1'-0"

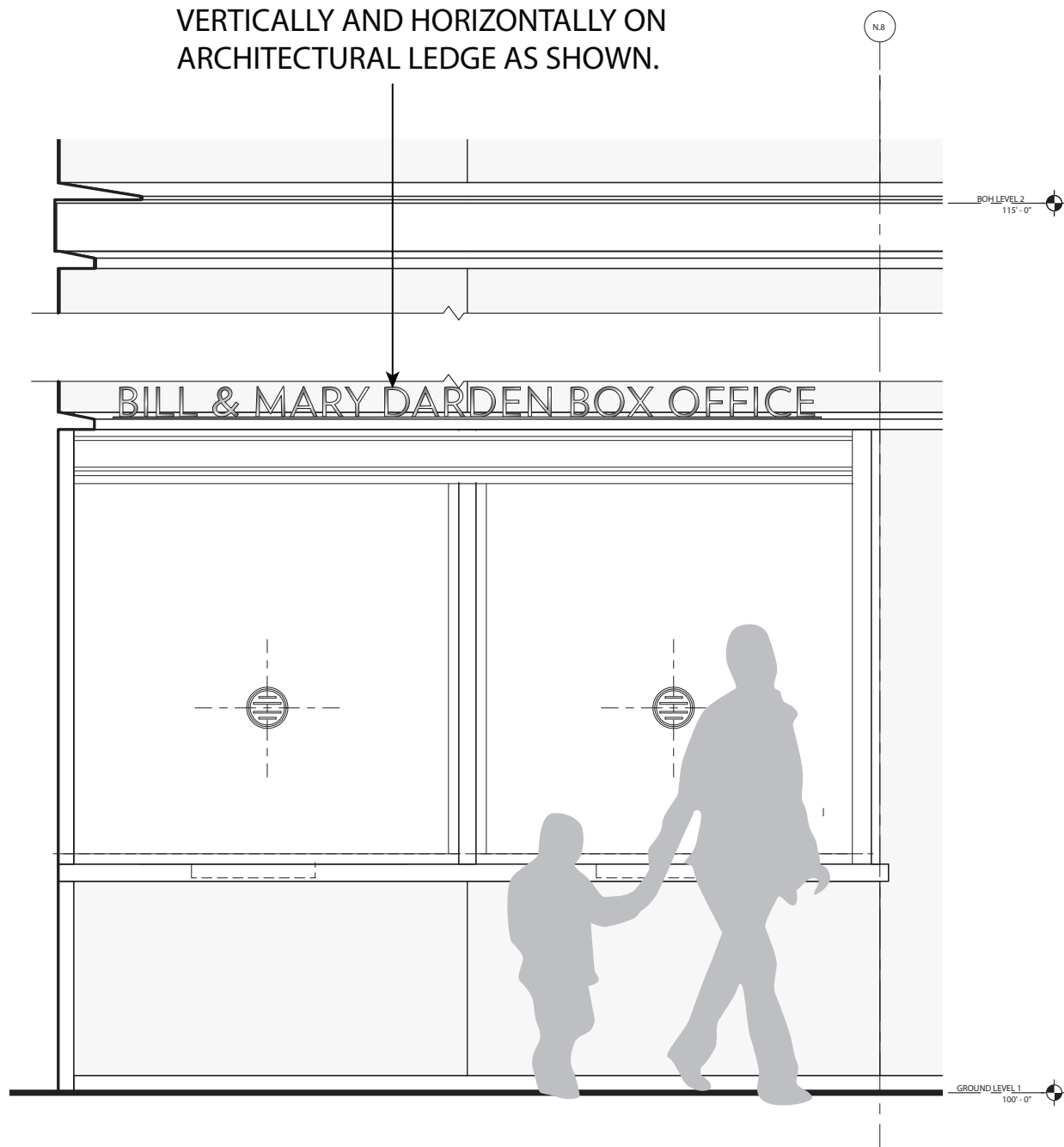
1/4" THICK STAINLESS STEEL PANEL WITH ETCHED AND FILLED NAMES AS SHOWN. TWO FINISHES REQD. TO LIGHTLY CONTRAST WITH SATIN FINISH AS SHOWN. PROVIDE CLEAR COAT.

SECURE TO EXTERIOR STONE BUILDING WALL SURFACE WITH HIDDEN FASTENERS AS REQD. COORDINATE WITH ARCHITECT FASTENER REQUIREMENTS PER STONE FACADE MATERIAL.

FINISH 1 IS BUFFED FINISH, FINISH 2 IS ETCHED. SUBMIT SAMPLES OF ALL FINISHES WITH ETCHED AND FILLED TYPE OVERLAY FOR APPROVAL.

PLACEHOLDER LAYOUT. FINAL LAYOUT TO BE PROVIDED.

DONOR NAME MESSAGING IS CENTERED
VERTICALLY AND HORIZONTALLY ON
ARCHITECTURAL LEDGE AS SHOWN.



BOX OFFICE EXTERIOR ELEVATION - SIGN "G"

1/2" = 1'-0"

SIGN DETAIL

3/4" = 1'-0"

