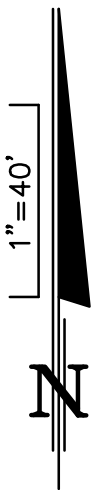
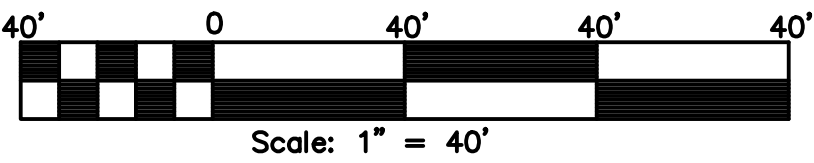


LAKE NONA CENTRAL PARCEL 10 LOT 1
A PORTION OF SECTION 13, TOWNSHIP 24 SOUTH, RANGE 30 EAST
AND A PORTION OF SECTION 18, TOWNSHIP 24 SOUTH, RANGE 31 EAST
CITY OF ORLANDO, ORANGE COUNTY, FLORIDA

PLAT
BOOK PAGE

SHEET 9 OF 10
SEE SHEET 1 FOR NOTES AND LEGEND
SEE SHEET 2 FOR KEY MAP



DETAIL 7A

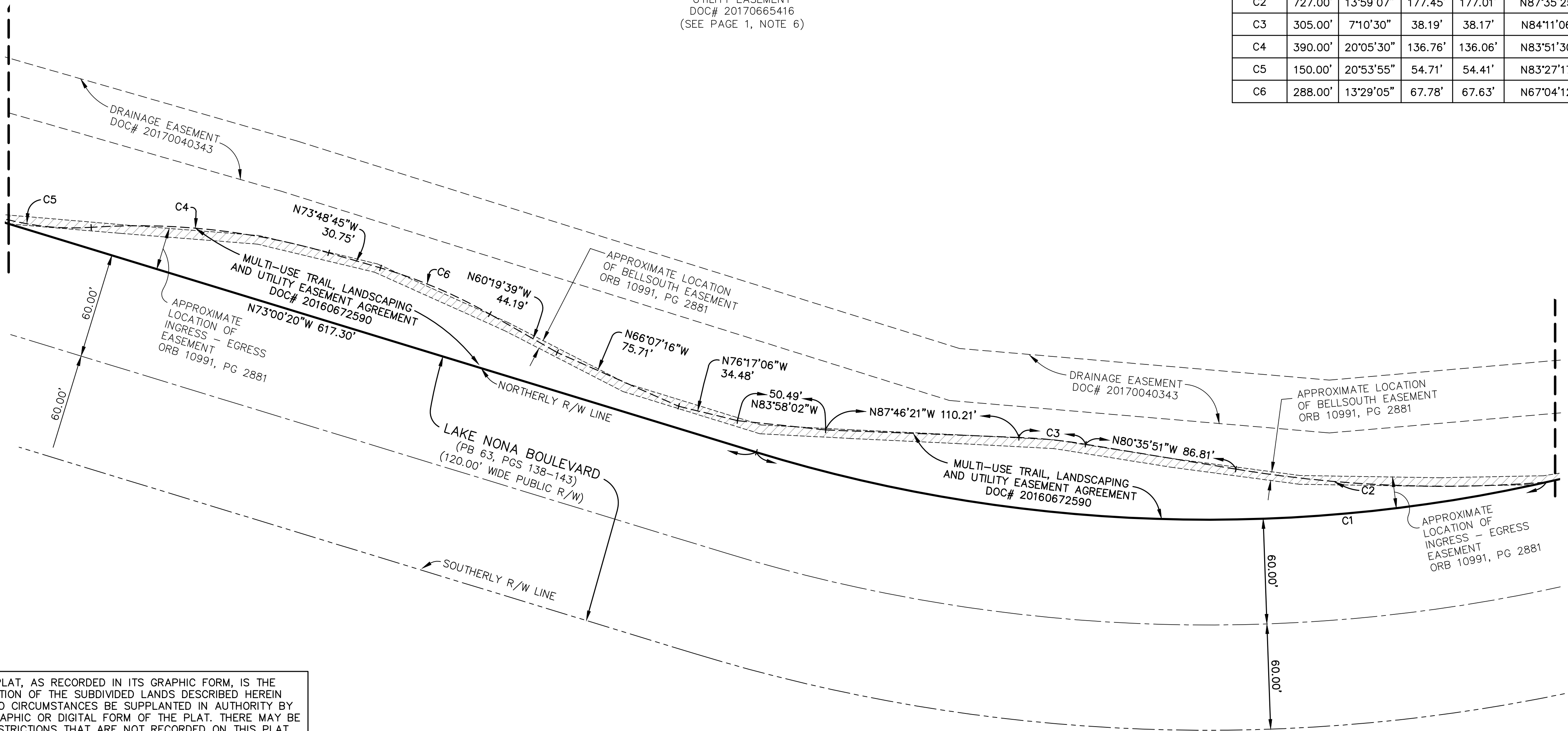
MULTI-USE TRAIL, LANDSCAPING AND UTILITY
EASEMENT AGREEMENT DOC# 20160672590
EASEMENT DIMENSIONS

LOT 1

SUBJECT TO
ORLANDO UTILITIES COMMISSION
UTILITY EASEMENT
DOC# 20170665416
(SEE PAGE 1, NOTE 6)

CURVE TABLE (THIS SHEET ONLY)					
NUMBER	RADIUS	DELTA	LENGTH	CHORD	CHORD BEARING
C1	880.00'	29°39'16"	455.46'	450.39'	S87°49'58"E
C2	727.00'	13°59'07"	177.45'	177.01'	N87°35'25"W
C3	305.00'	7°10'30"	38.19'	38.17'	N84°11'06"W
C4	390.00'	20°05'30"	136.76'	136.06'	N83°51'30"W
C5	150.00'	20°53'55"	54.71'	54.41'	N83°27'17"W
C6	288.00'	13°29'05"	67.78'	67.63'	N67°04'12"W

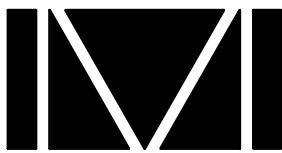
CONTINUED ON DETAIL 3B
SEE SHEET 8



CONTINUED ON DETAIL 6A
SEE SHEET 10

NOTICE: THIS PLAT, AS RECORDED IN ITS GRAPHIC FORM, IS THE
OFFICIAL DEPICTION OF THE SUBDIVIDED LANDS DESCRIBED HEREIN
AND WILL IN NO CIRCUMSTANCES BE SUPPLANTED IN AUTHORITY BY
ANY OTHER GRAPHIC OR DIGITAL FORM OF THE PLAT. THERE MAY BE
ADDITIONAL RESTRICTIONS THAT ARE NOT RECORDED ON THIS PLAT
THAT MAY BE FOUND IN THE PUBLIC RECORDS OF THIS COUNTY.

PREPARED BY:



DONALD W. MCINTOSH ASSOCIATES, INC.
ENGINEERS PLANNERS SURVEYORS
2200 PARK AVENUE NORTH, WINTER PARK, FLORIDA 32789 (407) 644-4068
CERTIFICATE OF AUTHORIZATION NUMBER LB68

NOTE: See Page 1, Note 7 regarding the approximate locations of
the BellSouth Easement and Ingress - Egress Easement, recorded in
Official Records Book 10991, Page 2881, in the Public Records of
Orange County, Florida, shown hereon.