

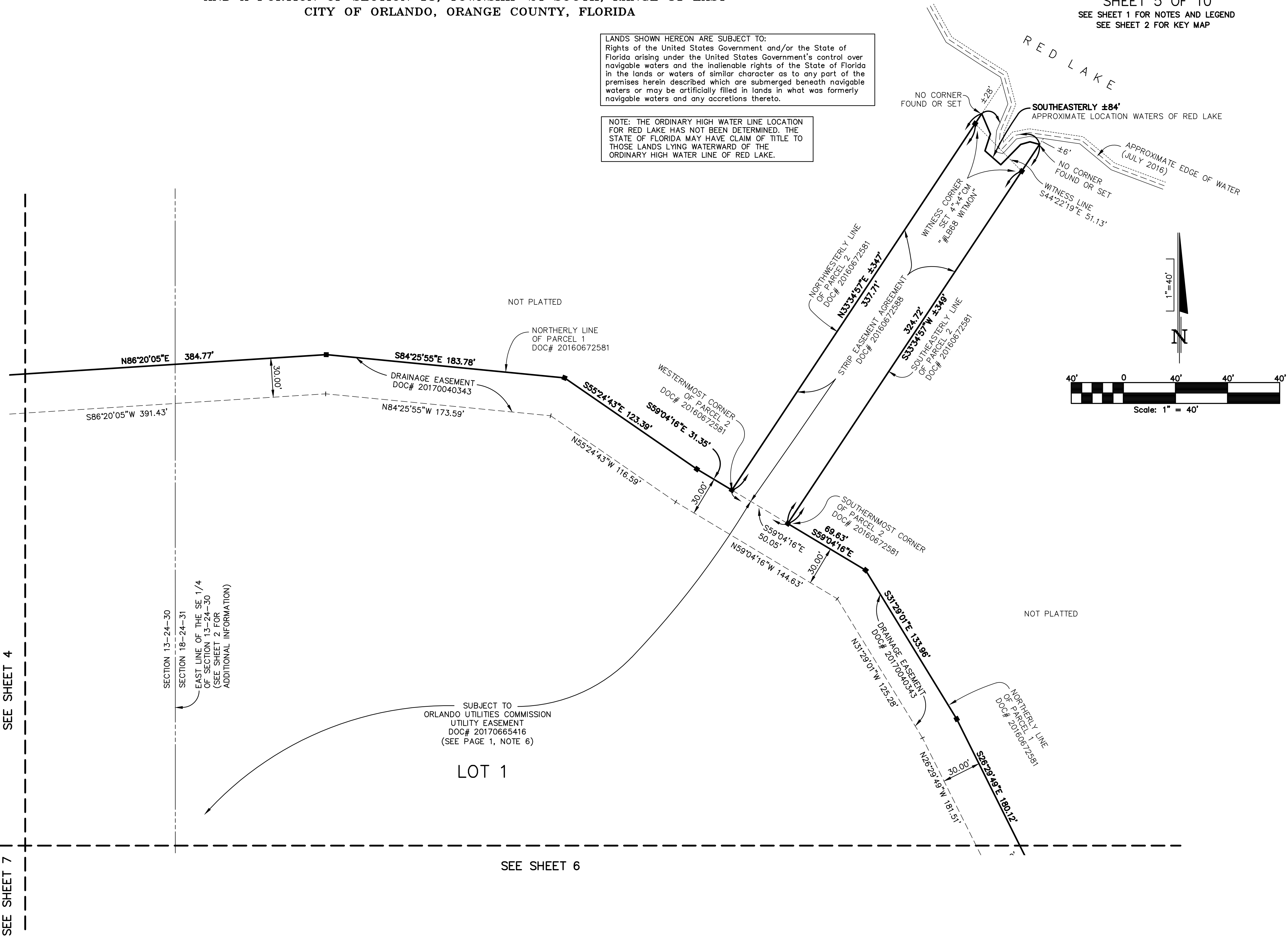
LAKE NONA CENTRAL PARCEL 10 LOT 1
A PORTION OF SECTION 13, TOWNSHIP 24 SOUTH, RANGE 30 EAST
AND A PORTION OF SECTION 18, TOWNSHIP 24 SOUTH, RANGE 31 EAST
CITY OF ORLANDO, ORANGE COUNTY, FLORIDA

PLAT BOOK PAGE

SHEET 5 OF 10
SEE SHEET 1 FOR NOTES AND LEGEND
SEE SHEET 2 FOR KEY MAP

LANDS SHOWN HEREON ARE SUBJECT TO:
Rights of the United States Government and/or the State of Florida arising under the United States Government's control over navigable waters and the inalienable rights of the State of Florida in the lands or waters of similar character as to any part of the premises herein described which are submerged beneath navigable waters or may be artificially filled in lands in what was formerly navigable waters and any accretions thereto.

NOTE: THE ORDINARY HIGH WATER LINE LOCATION FOR RED LAKE HAS NOT BEEN DETERMINED. THE STATE OF FLORIDA MAY HAVE CLAIM OF TITLE TO THOSE LANDS LYING WATERWARD OF THE ORDINARY HIGH WATER LINE OF RED LAKE.



NOTICE: THIS PLAT, AS RECORDED IN ITS GRAPHIC FORM, IS THE OFFICIAL DEPICTION OF THE SUBDIVIDED LANDS DESCRIBED HEREIN AND WILL IN NO CIRCUMSTANCES BE SUPPLANTED IN AUTHORITY BY ANY OTHER GRAPHIC OR DIGITAL FORM OF THE PLAT. THERE MAY BE ADDITIONAL RESTRICTIONS THAT ARE NOT RECORDED ON THIS PLAT THAT MAY BE FOUND IN THE PUBLIC RECORDS OF THIS COUNTY.

PREPARED BY:
DONALD W. McINTOSH ASSOCIATES, INC.
ENGINEERS PLANNERS SURVEYORS
2200 PARK AVENUE NORTH, WINTER PARK, FLORIDA 32789 (407) 644-4068
CERTIFICATE OF AUTHORIZATION NUMBER LB68