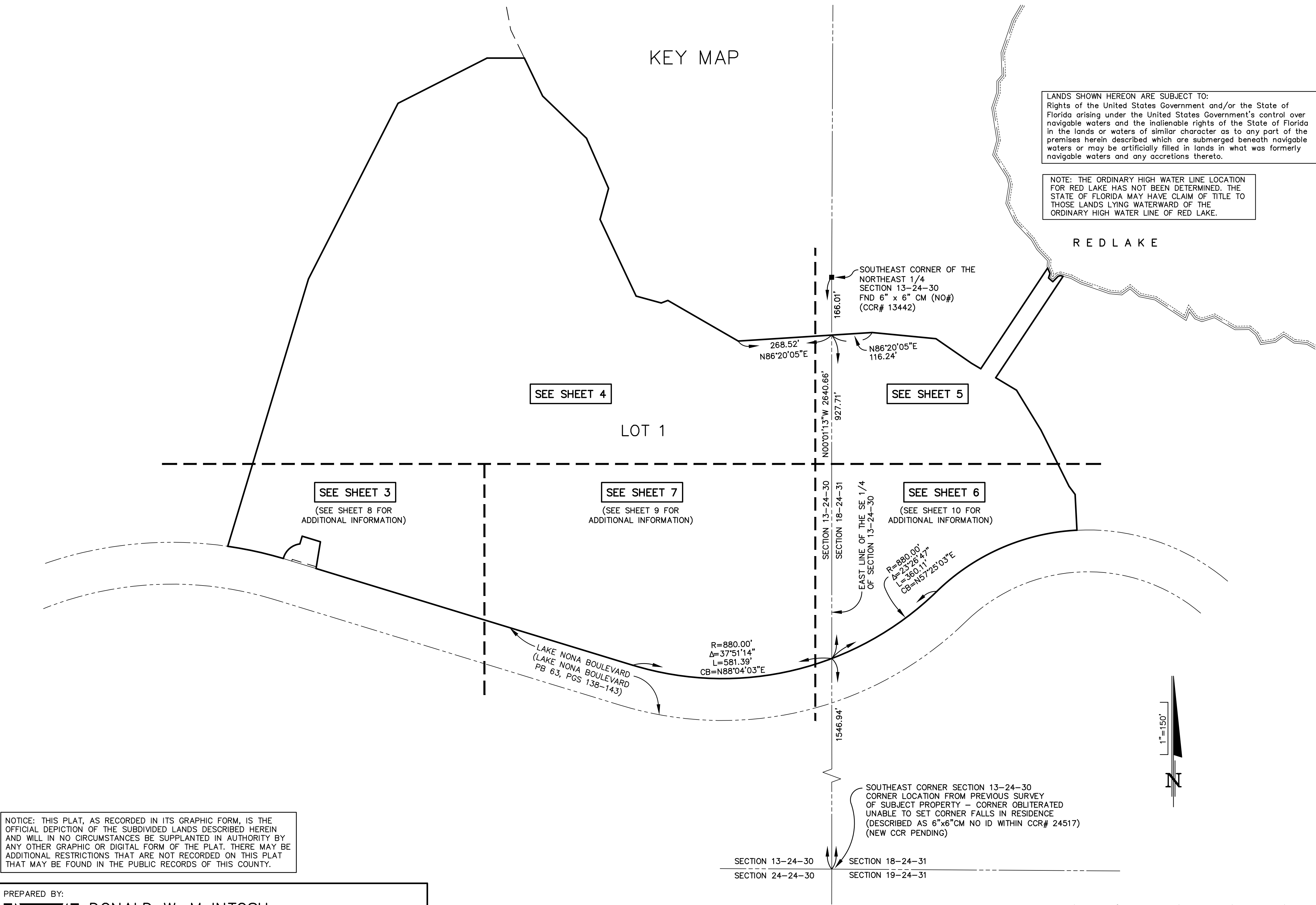


LAKE NONA CENTRAL PARCEL 10 LOT 1
A PORTION OF SECTION 13, TOWNSHIP 24 SOUTH, RANGE 30 EAST
AND A PORTION OF SECTION 18, TOWNSHIP 24 SOUTH, RANGE 31 EAST
CITY OF ORLANDO, ORANGE COUNTY, FLORIDA

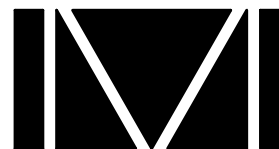
PLAT
BOOK

PAGE

SHEET 2 OF 10
SEE SHEET 1 FOR NOTES AND LEGEND



PREPARED BY:



DONALD W. MCINTOSH ASSOCIATES, INC.
ENGINEERS PLANNERS SURVEYORS
2200 PARK AVENUE NORTH, WINTER PARK, FLORIDA 32789 (407) 644-4068
CERTIFICATE OF AUTHORIZATION NUMBER LB68