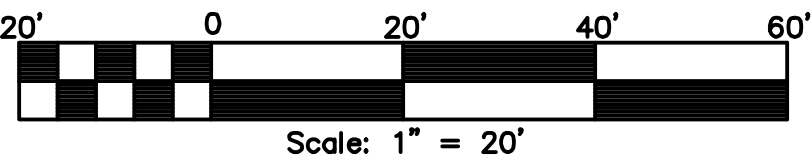


LAUREATE PARK PHASE 1C FIRST AMENDMENT
A REPLAT OF LOTS 376A, 376B AND 376C
LAUREATE PARK PHASE 1C
PLAT BOOK 78, PAGES 125 THROUGH 137
LOCATED IN SECTION 30, TOWNSHIP 24 SOUTH, RANGE 31 EAST
CITY OF ORLANDO, ORANGE COUNTY, FLORIDA

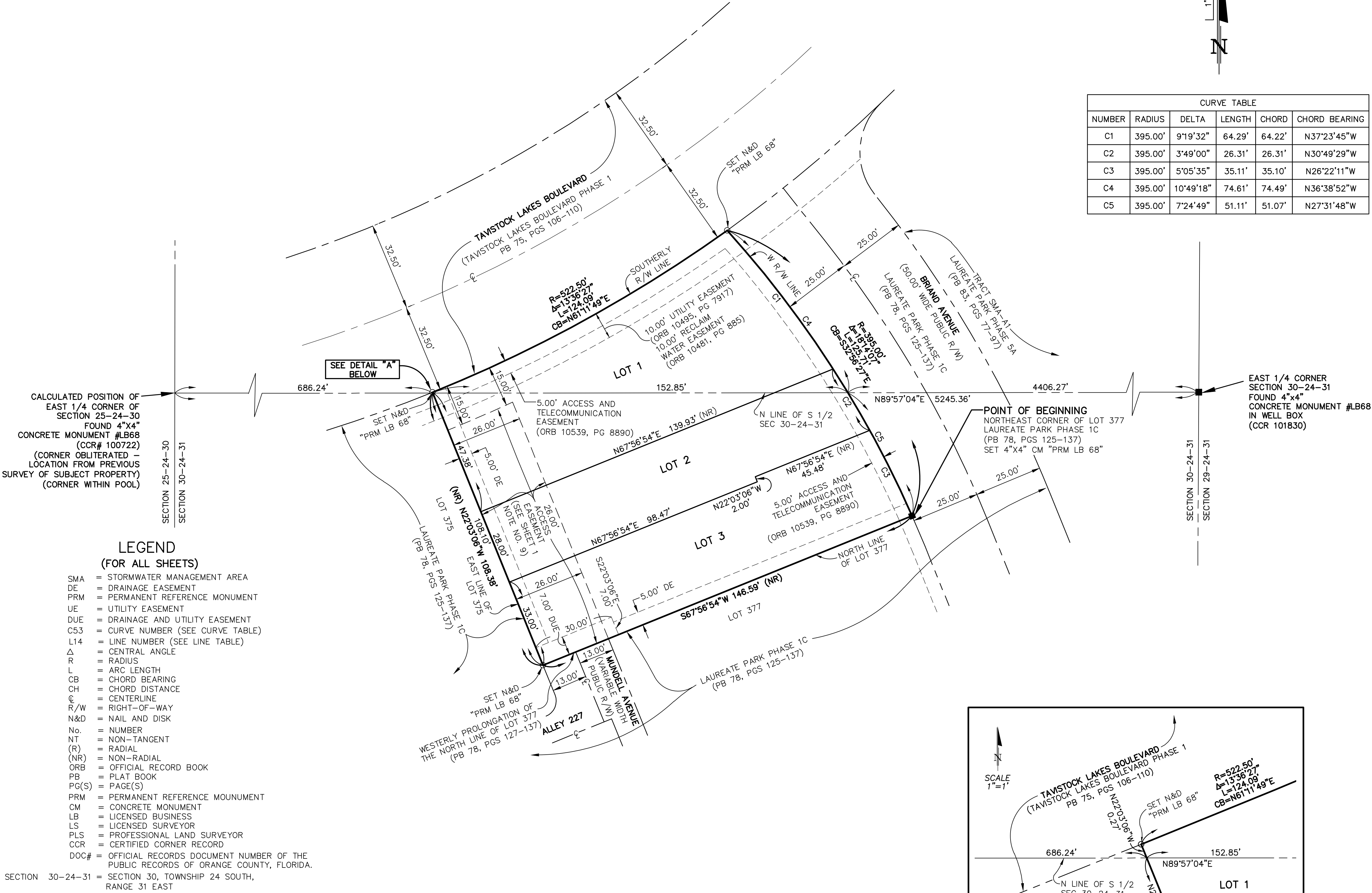
PLAT
BOOK

PAGE

SHEET 2 OF 2
SEE SHEET 1 FOR NOTES



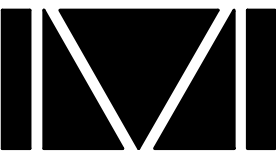
CURVE TABLE					
NUMBER	RADIUS	DELTA	LENGTH	CHORD	CHORD BEARING
C1	395.00'	9°19'32"	64.29'	64.22'	N37°23'45"W
C2	395.00'	3°49'00"	26.31'	26.31'	N30°49'29"W
C3	395.00'	5°05'35"	35.11'	35.10'	N26°22'11"W
C4	395.00'	10°49'18"	74.61'	74.49'	N36°38'52"W
C5	395.00'	7°24'49"	51.11'	51.07'	N27°31'48"W



LEGEND
(FOR ALL SHEETS)

- SMA = STORMWATER MANAGEMENT AREA
DE = DRAINAGE EASEMENT
PRM = PERMANENT REFERENCE MONUMENT
UE = UTILITY EASEMENT
DUE = DRAINAGE AND UTILITY EASEMENT
C53 = CURVE NUMBER (SEE CURVE TABLE)
L14 = LINE NUMBER (SEE LINE TABLE)
 Δ = CENTRAL ANGLE
R = RADIUS
L = ARC LENGTH
CB = CHORD BEARING
CH = CHORD DISTANCE
CL = CENTERLINE
R/W = RIGHT-OF-WAY
N&D = NAIL AND DISK
No. = NUMBER
NT = NON-TANGENT
(R) = RADIAL
(NR) = NON-RADIAL
ORB = OFFICIAL RECORD BOOK
PB = PLAT BOOK
PG(S) = PAGE(S)
PRM = PERMANENT REFERENCE MOUNUMENT
CM = CONCRETE MONUMENT
LB = LICENSED BUSINESS
LS = LICENSED SURVEYOR
PLS = PROFESSIONAL LAND SURVEYOR
CCR = CERTIFIED CORNER RECORD
DOC# = OFFICIAL RECORDS DOCUMENT NUMBER OF THE PUBLIC RECORDS OF ORANGE COUNTY, FLORIDA.
SECTION 30-24-31 = SECTION 30, TOWNSHIP 24 SOUTH, RANGE 31 EAST

PREPARED BY:



DONALD W. MCINTOSH ASSOCIATES, INC.
ENGINEERS PLANNERS SURVEYORS
2200 PARK AVENUE NORTH, WINTER PARK, FLORIDA 32789 (407) 644-4068
CERTIFICATE OF AUTHORIZATION NUMBER LB68

NOTICE: THIS PLAT, AS RECORDED IN ITS GRAPHIC FORM, IS THE OFFICIAL DEPICTION OF THE SUBDIVIDED LANDS DESCRIBED HEREIN AND WILL IN NO CIRCUMSTANCES BE SUPPLANTED IN AUTHORITY BY ANY OTHER GRAPHIC OR DIGITAL FORM OF THE PLAT. THERE MAY BE ADDITIONAL RESTRICTIONS THAT ARE NOT RECORDED ON THIS PLAT THAT MAY BE FOUND IN THE PUBLIC RECORDS OF THIS COUNTY.

