

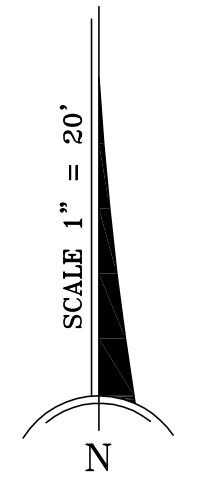
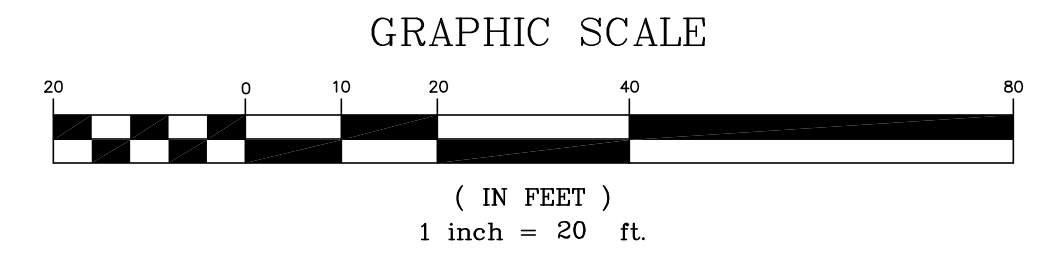
2110 E Washington

SHEET 2 OF 2

PLAT BOOK

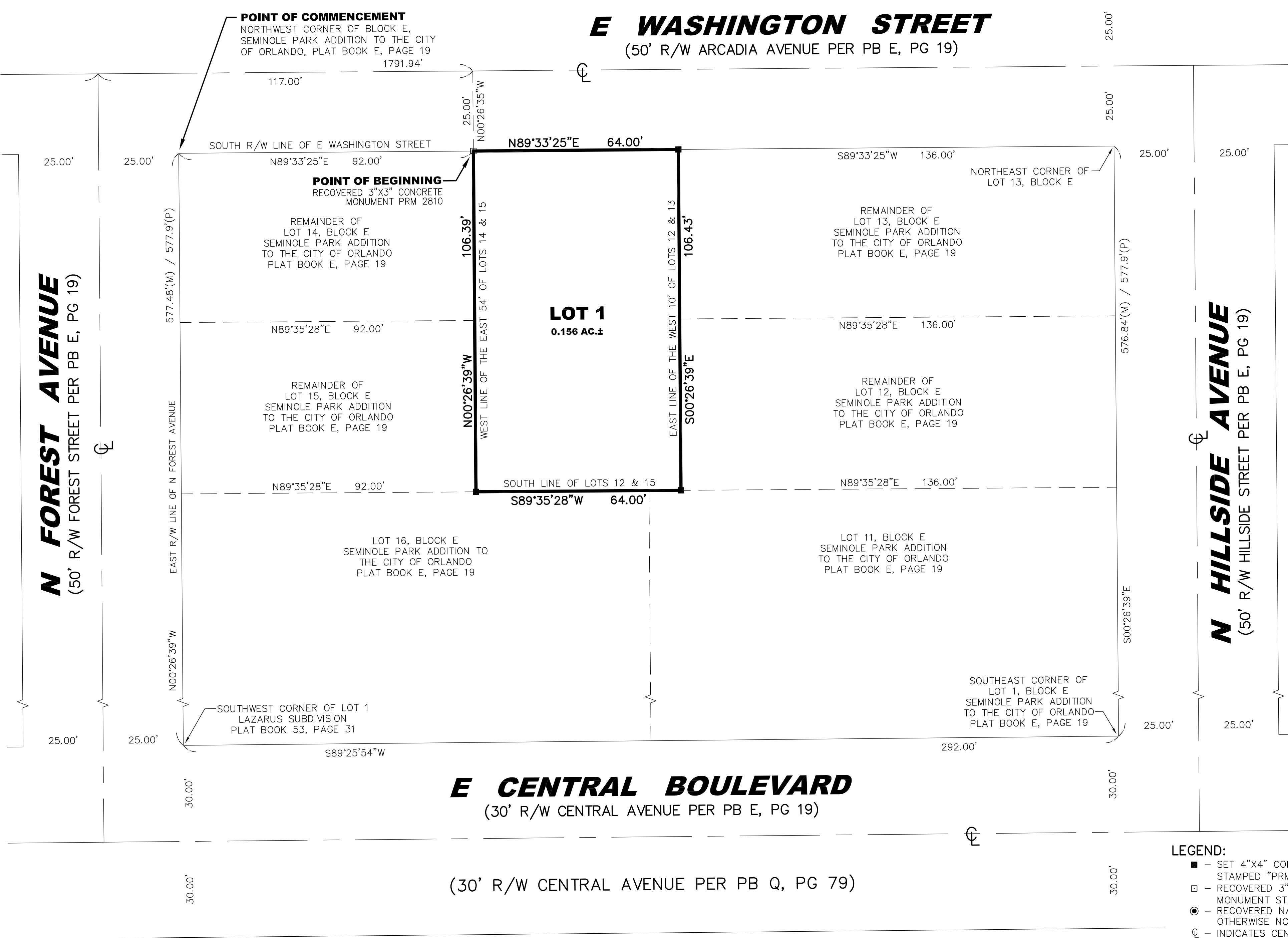
PAGE

A Replat of the East 54 feet of Lots 14 and 15, and the West 10 feet of Lots 12 and 13, Block E,
Seminole Park Addition to the City of Orlando
Being a portion of Section 30, Township 22 South, Range 30 East,
City of Orlando, Orange County, Florida



NW CORNER OF THE SOUTHWEST
1/4 OF SECTION 30-22-30
CCR #063381
RECOVERED NAIL & DISC #2494

N00°30'10"W 678.79'
1961.23'
S00°30'10"E
WEST LINE OF THE SOUTHWEST 1/4 OF SECTION 30-22-30 (BASIS FOR BEARINGS)



SHANNON SURVEYING, INC.
499 NORTH S.R. 434 - SUITE 2045
ALTAMONTE SPRINGS, FLORIDA, 32714
(407) 774-8372 LB # 6898

- LEGEND:**
- - SET 4"x4" CONCRETE MONUMENT STAMPED "PRM #4671"
 - - RECOVERED 3"x3" CONCRETE MONUMENT STAMPED "PRM 2810"
 - - RECOVERED NAIL & DISK, UNLESS OTHERWISE NOTED.
 - ⊕ - INDICATES CENTERLINE
 - LB - LICENSED BUSINESS CERTIFICATION
 - PRM - PERMANENT REFERENCE MONUMENT
 - R/W - RIGHT-OF-WAY
 - # - NUMBER
 - PB - PLAT BOOK
 - PG - PAGE
 - CCR - CERTIFIED CORNER RECORD
 - N - NORTH
 - NE - NORTHEAST
 - E - EAST
 - SE - SOUTHEAST
 - S - SOUTH
 - SW - SOUTHWEST
 - W - WEST
 - NW - NORTHWEST
 - ORB - OFFICIAL RECORDS BOOK