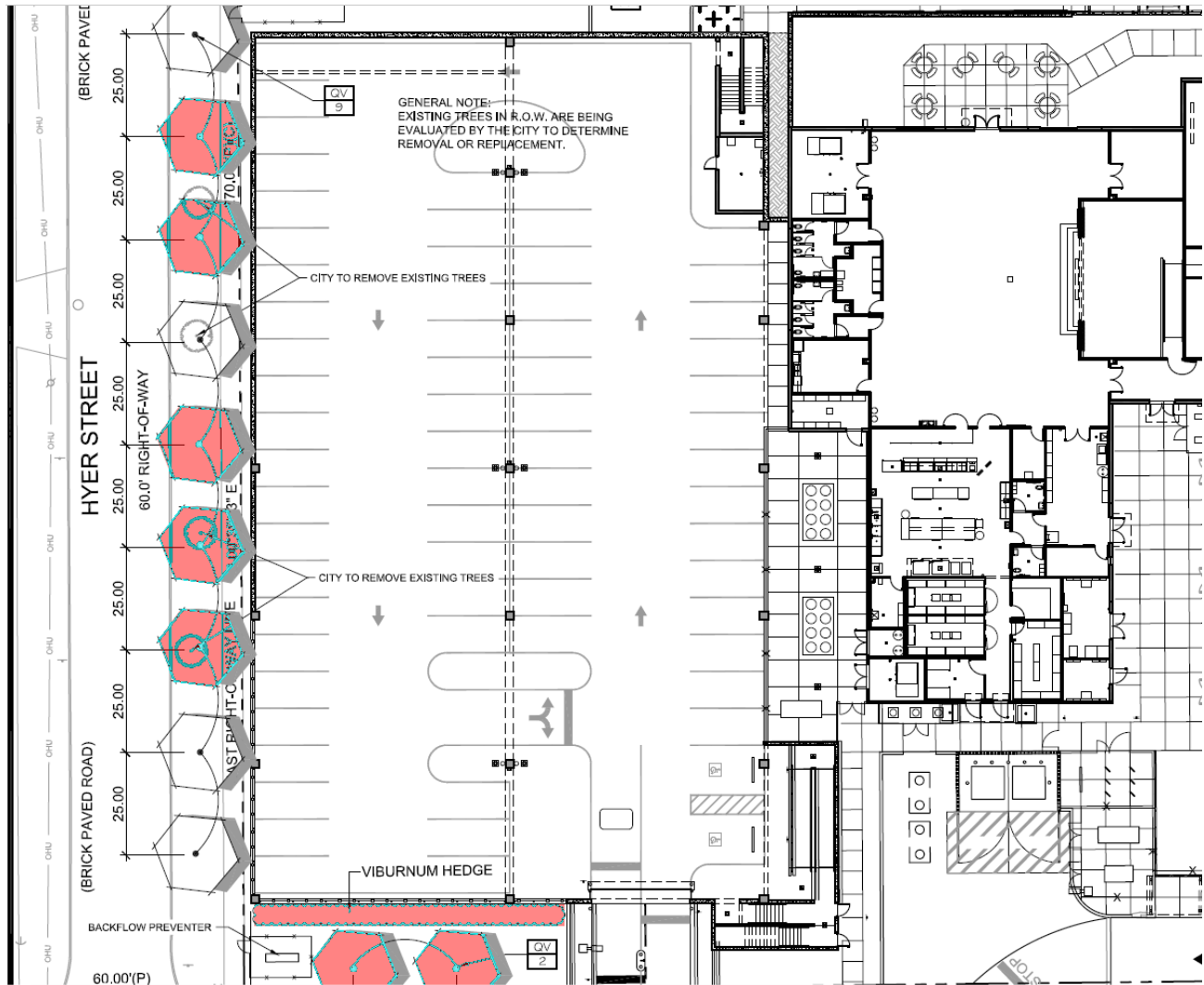


OCPS updated the plan to include 7 additional canopy trees to better screen the parking lot lighting, and a viburnum hedge on the south side of the building to better screen the face of the garage.



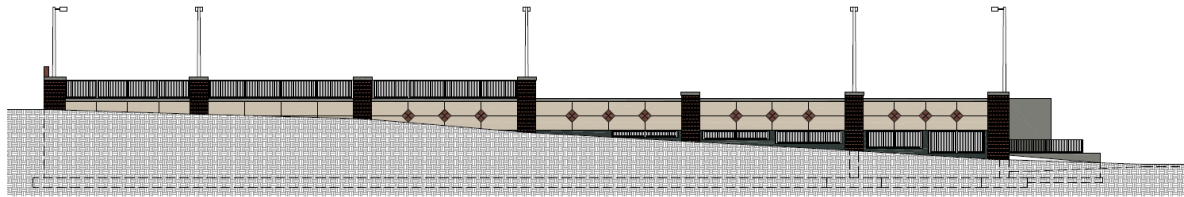
## Hillcrest Elementary Parking Garage Facades

This exhibit shows an alternative for the west and south facades of the garage. Final design should be substantially similar to the submittal provided in the Council Agenda Item, or to this alternative shown below. The final design of the south and west parking garage elevations is subject to approval by the Planning Official in order to ensure adequate screening and quality design.

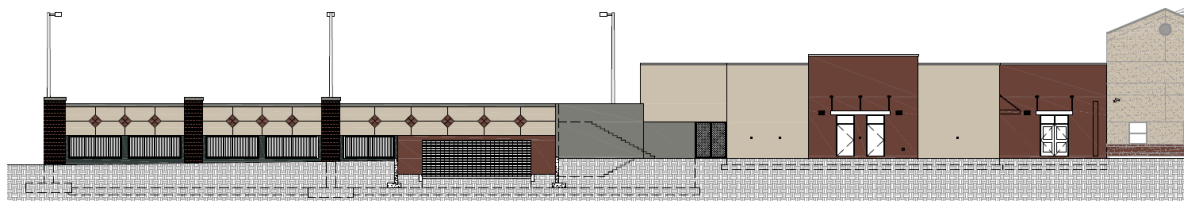


C.T. HSU + ASSOCIATES, P.A.  
ARCHITECTURE • PLANNING • INTERIOR DESIGN  
820 Irma Avenue Orlando, FL 32803 Tel:  
Fax: 407.423.4793 407.423.0096

LICENSE #AA-C 001322



WEST ELEVATION - CONCEPT A



SOUTH ELEVATION - CONCEPT A

5/8/17