

**CONTINUING LAND SURVEYING AND MAPPING
SERVICES AUTHORIZATION #18034(1)**

THIS SERVICES AUTHORIZATION is made and entered into this _____ day of _____, 20____, by and between the **City of Orlando, Florida**, a municipal corporation existing under the laws of the State of Florida (CITY), and **Southeastern Surveying and Mapping Corporation**, doing business locally at 6500 All American Boulevard, Orlando, Florida 32810-4350 (CONSULTANT).

WHEREAS, the CITY and the CONSULTANT have previously entered into an agreement for the CONSULTANT's professional services (AGREEMENT) effective June 15, 2015; and

WHEREAS, the CITY and the CONSULTANT shall refer to the AGREEMENT herein, and desire to have it incorporated by reference; and

WHEREAS, the CITY and the CONSULTANT now wish to memorialize their understanding for the CONSULTANT's professional services for the 2017 ADA Transition Plan Update Project (PROJECT).

NOW, THEREFORE, in consideration of the mutual promises and covenants contained herein and given one to the other, the sufficiency of which is hereby acknowledged, the parties agree as follows:

I. SCOPE OF WORK

The scope of work has been agreed to by the parties, and is attached hereto and incorporated herein by reference, as Exhibit I.

II. FEE

The not-to-exceed fee of \$148,681.68 has been agreed to by the parties, as set forth on Exhibit I.

III. TERM

CONSULTANT shall complete all work in accordance with the timeframes set forth in the scope of work, if any, provided however, that all work and the term of this SERVICES AUTHORIZATION shall be completed by the end of business sixteen (16) weeks from issuance of Notice to Proceed. It is also agreed that the CITY shall have an option for extension of this SERVICES AUTHORIZATION, as necessary to complete the present scope of services (Exhibit I) or to provide additional services.

IV. ENTIRE AGREEMENT

This SERVICES AUTHORIZATION supersedes all previous authorizations, agreements, or representations, either verbal or written, heretofore in effect between the CITY and the CONSULTANT that may have concerned the matters covered herein, except that this SERVICES AUTHORIZATION shall in no way supersede or amend the AGREEMENT or other authorizations except as specifically provided herein. No additions, alterations, or variations to the terms of this SERVICES AUTHORIZATION shall be valid, nor can the provisions of this SERVICES AUTHORIZATION be waived by either party, unless such additions, alterations, or waivers are expressly set forth in writing in a document duly executed by the parties. CONSULTANT acknowledges and agrees that any proposals or proposed agreements from subconsultants attached to this SERVICES AUTHORIZATION are attached solely to reflect the scopes of work to be performed and the fees to be charged by such subconsultants. By executing this SERVICES AUTHORIZATION, the CITY does not become a party thereto or bound by the terms thereof.

IN WITNESS WHEREOF, the parties hereto have executed this SERVICES AUTHORIZATION on the day and year first written above.

City of Orlando, Florida

By: _____
David Billingsley, CPSM, C.P.M.
Chief Procurement Officer

APPROVED AS TO FORM AND LEGALITY
for the use and reliance of the
City of Orlando, Florida, only.

_____, 20____.

Michael O'Dowd
Assistant City Attorney
Orlando, Florida

**Southeastern Surveying and Mapping
Corporation**

By: _____

Print Name: _____

Title: _____

STATE OF FLORIDA }

COUNTY OF _____ }

PERSONALLY APPEARED before me, the undersigned authority, _____
[] well known to me or [] who has produced _____ as identification, and
known by me to be the _____ of the corporation named above, and acknowledged before
me that he/she executed the foregoing instrument on behalf of said corporation as its true act and
deed, and that he/she was duly authorized to do so.

WITNESS my hand and official seal this _____ day of _____, 20____.

NOTARY PUBLIC

Print Name: _____

My Commission Expires: _____

Steven L. Anderson, Jr., PSM, PLS
 Charles M. Arnett, PSM
 Russell G. Daly, PSM, PLS
 Michael L. Dougherty, PSM
 Bruce C. Ducker, PSM
 James M. Dunn, II, PSM
 Mark J. Efird, PSM
 Thomas F. Ferguson, PSM
 Tate B. Flowers, PLS
 Robert W. Gardner, PSM
 Brian R. Garvey, PE, GISP
 Daniel J. Henry, PSM, PLS
 Mathew G. Jennings, RLS
 Gary B. Krick, PSM
 Brad J. Lashley, PSM, PLS
 Myron F. Lucas, PSM
 James E. Mazurak, PSM



Southeastern Surveying and Mapping Corporation
Serving the Southeast Since 1972
www.southeasternsurveying.com
info@southeasternsurveying.com

Thomas K. Mead, PSM, PLS
 Timothy O. Mosby, PSM
 James L. Petersen, PSM
 William C. Rowe, PSM
 Tony G. Syfrett, PSM, PLS
 John S. Thomas, PSM
 Edward W. Wackerman, PLS
 Kirk R. Hall, EI, GISP
 Catherine E. Galgano, GISP
 Cheryl A. Isenberg, GISP
 Patrick J. Phillips, GISP
 Donna L. Canney, CST IV
 Frank B. Henry, CST IV
 David M. Rentfrow, CST IV
 Steve D. Smith, CST IV
 Celeste B. van Gelder, CST IV

Land Surveying & Mapping Services • Sub-Surface Utility Designation & Location Services • Geographic Information Systems • GPS Asset Inventories

April 8, 2017

Via email: Richard.Howard@CityofOrlando.net

Mr. Richard M. Howard, PE
 Director of Public Works
 City of Orlando
 400 South Orange Avenue
 Orlando, FL 32802-4990

RE: City of Orlando, Florida – 2017 ADA Transition Plan Update Proposal

Dear Mr. Howard,

Southeastern Surveying and Mapping Corporation (SSMC) is pleased to submit our proposal for the update to the City's ADA Transition Plan.

The Americans with Disabilities Act (ADA) of 1990 is a civil rights statute that prohibits discrimination against people who have disabilities. There are five separate Titles (sections) of the Act relating to different aspects of potential discrimination. Title II of the Act specifically addresses the subject of making public services and public transportation accessible to those with disabilities. With the advent of the Act, designing and constructing facilities for public use that are not accessible by people with disabilities constitutes discrimination.

The Act applies to all facilities, including both facilities built before and after 1990. As a necessary step to a program access plan to provide accessibility under the ADA, state and local government, public entities or agencies are required to perform self-evaluations of their current facilities, relative to the accessibility requirements of the ADA. The agencies are then required to develop a Program Access Plan, which can be called a Transition Plan, to address any deficiencies. The Plan is intended to achieve the following:

- Identify physical obstacles that limit the accessibility of facilities to individuals with disabilities,
- Describe the methods to be used to make the facilities accessible,
- Provide a schedule for making the access modifications, and
- Identify the public officials responsible for implementation of the Transition Plan.

The Plan is required to be updated periodically until all accessibility barriers are removed.

6500 All American Blvd Orlando, FL 32810 407.292.8580 407.292.0141 Fax	1130 Highway 90 Chipley, FL 32428 850.638.0790 850.638.8069 Fax	Cypress Business Center 8301 Cypress Plaza Drive, Suite 104, Jacksonville, FL 32256 904.737.5990 904.737.5995 Fax	119 West Main Street Tavares, FL 32778 352.343.4880 352.343.4914 Fax	10 East Lake Street Kissimmee, FL 34744 407.944.4880 407.944.0424 Fax	University Corporate Park 10770 North 46 th Street Suite C-300 Tampa, FL 33617 813.898.2711 813.898.2712 Fax
---	--	--	---	--	--

*Licenses: PSM: Florida Professional Surveyor & Mapper • PLS: Alabama Professional Land Surveyor • RLS: Georgia Registered Land Surveyor • PE: Professional Engineer
 Certifications: EI: Engineering Intern • GISP: Geographic Information Systems Professional • CST: Certified Survey Technician*

For this proposal, SSMC will be assisted by Horizon Geo Services, Inc., a WBE sub-consultant who partnered with SSMC on the 2009 Sidewalk and Curb Ramp Inventory and Condition Assessment project for the City, and L & S Diversified, LLC, an MBE sub-consultant who is currently partnered with SSMC for the project updating the City's Stormwater Inventory.

The SSMC team will utilize the City's Existing ADA Transition Plan, SSMC's existing Sidewalk and Curb Ramp Inventory GIS database prepared for the City in 2009 and supplemental field investigation to prepare an updated ADA transition plan for the City.

The scope of this project will include reviewing the City's existing ADA Transition Plan, identifying physical obstacles limiting accessibility along a sample of the City roadways, reviewing and updating the City's defined methodologies for making the facilities accessible, developing a schedule and budgetary cost estimates for making access modifications and preparing an updated Transition Plan Report as specifically described below:

SCOPE OF SERVICES:

A. Review the City's Existing Documents and Policies

1. Meet with City Staff to Introduce Project Tasks and Schedule

The SSMC team will meet with City staff to introduce the proposed project tasks and schedule. The proposed method for prioritizing barrier removal projects identified during the self-evaluation task will be presented. The SSMC team will coordinate with City staff to identify and obtain all necessary documents and materials to support the update to the City's ADA Transition Plan.

2. Obtain and Review the City's Existing ADA Transition Plan

The SSMC team will obtain a copy of the City's existing ADA Transition Plan and review the plan's scope for compliance with current transition plan requirements. For continuity, it is assumed that the update to the City's current plan will follow a similar organization and structure as the existing plan.

3. Review Existing City Design Standards for ADA Facilities

The SSMC team will coordinate with City staff in the development of a strategy for updating the Transition Plan, including a review of City ordinances, design policies and design standards related to curb ramps and sidewalks. The SSMC team will identify issues which should be addressed to confirm that policies and design standards are nondiscriminatory to people with disabilities.

The SSMC team will review the current City's current design standards for compliance with the ADA for focusing on the public rights of way. SSMC will review the City's current standards, details and specifications as it pertains to pedestrian facilities within the right-of-way relative to 2010 ADA, PROWAG (Public Rights-of-Way Access Guidelines), and other nationally accepted accessibility guidelines. Findings and recommendations will be incorporated into ADA Self Assessment Report & Transition Plan Update.

4. Prepare List of City Buildings to be Audited in Future Facilities Self Assessment Survey

ADA Transition Plans are required to cover all facilities under the City's control. This includes rights-of-way, but also the buildings that may be owned by the City such as offices, and other types of buildings associated with City activities. While the focus of this ADA Transition Plan Update will concentrate on City managed pedestrian facilities in public rights-of-way, a comprehensive transition plan should also include a self-assessment of barriers within City buildings as well. In order to support this portion of the City's ADA Transition Plan in this task, the SSMC team will compile a listing of City buildings which will need to be audited as part of a self-assessment in a future phase of the ADA self-assessment program. The self-assessment of buildings performed in this future phase may be performed by City staff, the SSMC team, or another consultant.

5. Prepare List of City Parking Lots to be Audited in Future Facilities Self Assessment Survey

ADA Transition Plans are required to cover all facilities under the City's control. This includes rights-of-way, but also the parking lots that may be owned by the City. While the focus of this ADA Transition Plan Update will concentrate on City managed pedestrian facilities in public rights-of-way, a comprehensive transition plan should also include a self-assessment of barriers within City parking lots as well. In order to support this portion of the City's ADA Transition Plan in this task, the SSMC team will compile a listing of City parking lots which will need to be audited as part of a self-assessment in a future phase of the ADA self-assessment program. The self-assessment of parking lots performed in this future phase may be performed by City staff, the SSMC team, or another consultant.

6. Prepare List of City Parks to be Audited in Future Facilities Self Assessment Survey

ADA Transition Plans are required to cover all facilities under the City's control. This includes rights-of-way, but also the public parks that may be owned by the City. While the focus of this ADA Transition Plan Update will concentrate on City managed pedestrian facilities in public rights-of-way, a comprehensive transition plan should also include a self-assessment of barriers within City public parks as well. In order to support this portion of the City's ADA Transition Plan in this task, the SSMC team will compile a listing of City public parks which will need to be audited as part of a self-assessment in a future phase of the ADA self-assessment program. The self-assessment of public parks performed in this future phase may be performed by City staff, the SSMC team, or another consultant.

B. Self Assessment to Identify Physical Obstacles Limiting Accessibility along Public Rights of Way

The second task involved in updating the City's ADA Transition Plan is conducting an inventory of existing physical barriers along pedestrian facilities in public rights-of-way and listing all the barriers that limit accessibility. This is often referred to as the self-evaluation process. In this inventory the SSMC team will utilize existing street level photography and supplemental field visits to assess pedestrian facilities along 65 centerline miles of City roadways which will represent a sample of approximately 10% City's public rights-of-way. For the roadways to be sampled, the SSMC team shall complete a visual inspection of the rights-of-way corridors and locate the physical barriers that do meet current ADA Standards. The locations of the barriers will be documented with georeferenced points (GPS coordinates) and digital photographs depicting each physical barrier.

1. Define Sample Roadways for Field Investigation

The SSMC team will coordinate with City staff to select a representative sample of 10% of the City's roadway corridors covering 65 centerline miles to be assessed. This sample will include a mixture of arterial, collector and local roadways, to insure that the sample is a representative cross section of actual conditions throughout the City.

2. Measure Sidewalk Widths & Identify Gaps

Along the sample corridors, the City's existing GIS sidewalk feature class will be updated to reflect current conditions observed. Approximate sidewalk width will be measured for all sidewalks. In areas where there are sidewalk gaps, proposed future sidewalks will be digitized along City maintained roadways in order to quantify the total length of missing sidewalks.

3. Identify Sidewalk Roadside Barriers

The SSMC team will inspect the length of the sidewalk adjacent to the inventory roadways in order to identify any obstructions within the sidewalk area including protruding objects and encroachments into the path of travel. Identified obstructions will be added to the GIS database as an Obstruction feature and a photograph of the obstruction will be captured.

In areas where it is visibly observed that there are severe trip hazards of one or more inches within the sidewalk surface area, the location of the Trip Hazard will be noted. A photograph of the Trip Hazard will also be collected.

In areas where it is visibly observed that there are drop-off hazards adjacent to the sidewalk area, the location of the drop-off hazard will be noted. A photograph of the drop-off hazard will also be collected.

4. Identify Curb Ramp Barriers and Deficiencies

Existing curb ramps along the sample corridors will be inventoried and added to the GIS database. Curb ramps will be classified based upon the type of detectable warning surface (e.g. None, Stamped, or Truncated Dome Mat) and a photograph of each curb ramp will be linked to the GIS feature. At locations where sidewalks meet the curb and there is no curb ramp, that location will be classified as a missing curb ramp location, and a photograph of the obstruction will be captured.

Using the direction compliance criteria which requires that there must be a dedicated curb ramp for each pedestrian crossing direction in an intersection quadrant, The SSMC team will review all of the curb ramps at each intersection and identify locations where additional curb ramps are required for direction compliance.

5. Measure Excessive Longitudinal and Cross Slopes along Sidewalk and Ramps

In areas where it is visibly observed that the transverse cross slope of the sidewalk exceeds the allowable 2% limit along the sidewalk alignment, and at driveway crossings, the location will be identified and a

photograph will be captured so that the area can be visited in the field for further investigation and measurement.

In areas where it is visibly observed that the slope of the centerline profile alignment of the sidewalk exceeds the allowable 5% limit along the sidewalk path or 8.33% for ramps, the location will be identified and a photograph will be captured so that the area can be visited in the field for further investigation and measurement.

6. Identify Areas with Inadequate Passing Space

Current ADA Requirements specify that a pedestrian access route with less than 5 feet of width (exclusive of the curb) must provide passing spaces measuring 60" x 60" minimum, no further than 200 feet apart. Typically, in residential areas with narrow sidewalks, the residential driveways crossing the sidewalk serve as landings to facilitate passing space between the disabled. Along corridors where the sidewalks are less than 5 foot wide, the SSMC team will review the sidewalks to identify areas where there is insufficient passing space along 200 foot sections of sidewalk alignment.

7. Identify Signalization Barriers and Deficiencies

At signalized intersections, the intersection will be targeted for field inventory to assess that the curb ramps, pedestrian signals, and pavement markings meet current criteria and that pedestrian signals comply with minimum requirements for button height, design and placement. The sample for self assessment will include 50 intersections, or approximately 10% of the total number of signalized intersections that the City is responsible for.

C. Review and Update Defined Methodologies for Making the Facilities Accessible

1. Develop Standardized Methodologies for Repairs and Mitigation

For each of the types of identified barriers and deficiencies observed, a standardized set of methodologies for rehabilitation and repair will be developed to eliminate or mitigate the barrier. For example, if a severe sidewalk trip hazard exists, the mitigation methodology might be to remove and replace five feet of sidewalk.

2. Develop Costs to Mitigate ADA Barriers

In order to prepare budgetary cost estimates, the City will provide the SSMC team with recent construction cost information for City Projects that include curb cut/ramp replacement, cost per linear foot of sidewalk repair/replacement, intersection retrofit projects, and other costs as available. The SSMC team will review and compile this information along with recent Florida Department of Transportation and Orange County cost information in order to develop standard budgetary costs for ADA improvements.

D. Develop Schedule and Budgetary Cost Estimates for Making Access Modifications

The Transition Plan Update will include a schedule of improvements to upgrade accessibility in each year following the Transition Plan. Remediation work may be presented for an independent remediation program or as an integral part of regularly scheduled maintenance and improvements project such as Resurfacing Projects, Roadway Rehabilitation and Reconstruction Projects, and Signal System Installation Projects.

1. Estimate Quantities of Citywide Barriers from Sample Field Investigation

Using the results of the self assessment along the sample roadway corridors, the SSMC team will extrapolate those results citywide in order to prepare an estimated projection of the total number of barriers expected to require remediation for the entire City. These projected quantities, type and severity of barriers will be used to develop budgetary cost estimates and remediation schedules for the remainder of the City.

2. Develop Prioritization Methodologies

The SSMC team will develop a methodology to prioritize ADA barriers to be mitigated. The prioritization factors will balance the type of barrier; the degree of the barrier; and the location of the barrier. The prioritization will consider land use facilities, zoning, level of pedestrian activity, crash data, previous citizen complaints and City assessments, recent or planned capital improvement projects, available right-of-way and other factors; along with site, constraints; and financial and administrative burdens.

3. Prepare Implementation Schedule and Budget

Once the total estimated quantities and costs have been compiled for citywide remediation of ADA deficiencies and barriers, the SSMC team will coordinate with City staff to develop an annual budget and schedule to make improvements to the facilities on a regular basis through dedicated pedestrian capital improvements and supplemental tasks incorporated into regularly scheduled roadway paving and rehabilitation activities.

4. Identify Funding Alternatives

The City will provide the SSMC team with the existing funding sources being use for Orlando ADA improvements. The SSMC team will research and review best practices of similar agencies related to the funding of ADA improvements. Based on this information, the SSMC team will identify other potential funding sources and provide an assessment of funding including identifying potential funding sources and budgetary needs for infrastructure to ensure ADA compliance.

5. Facilitate Public Workshop

The Department of Justice requires that public entities that are engaging in an ADA Transition Plan process include “appropriate consultation with individuals with disabilities” as part of this process. The SSMC team will facilitate a public workshop organized by the City staff to review the update to the City’s Transition Plan. The SSMC team will prepare outreach materials, conduct a presentation on the Transition

Plan update process at the workshop, receive public comments from the attendees and prepare a brief summary of the workshop to highlight action items.

E. Prepare Updated Transition Plan Report

1. Prepare Summary of Findings

The SSMC team will prepare a plan summary document that will serve as a resource guide for City staff. The summary of findings will document the Transition Plan update process, document the findings of the self assessment performed on the representative sample corridors, and present the budgetary cost estimates and remediation schedule for the Citywide improvements to meet ADA requirements.

2. Prepare GIS Database

The SSMC team will provide a GIS inventory of the data collected for the sample roadway corridors studied. The SSMC team will also provide a Transportation Network Self Assessment Report for the corridors studied as a part of this initial sample. The report will include the following information:

- a) A tabular summary of identified ADA barriers and estimated costs for correction of each barrier based on the cost database. The table will include the type of barrier; classification of roadway the barrier is along; relevant ADA federal/state standards that the barrier is not meeting; approach to barrier mitigation and other related notes
- b) Photo documentation of each physical barrier will be provided with the database.

3. Prepare Individual Facilities and Obstruction Reports

Individual 8.5" x 11" summary reports will be prepared for each of the identified ADA facilities such as curb ramps and handrails in the corridors where the self assessment was performed. Each report will include a key map, location map, photograph of the ADA facility, and description of the facility.

Individual 8.5" x 11" summary reports will be prepared for each of the identified hazards and obstructions such as missing curb ramps, trip edges, drop-off hazards and other obstructions. Each report will include a key map, location map, photograph of the hazard or obstruction, description of the hazard or obstruction; relevant ADA federal/state standards that the barrier is not meeting; an approach to barrier mitigation and other related notes.

Reports will be provided in Adobe Acrobat PDF format.

4. Prepare Draft Transition Plan Update

Based on the self-evaluation and rights-of-way corridor compliance assessment, the SSMC team will prepare a draft Self-Evaluation and Transition Plan Update for the City. The plan will include:

- An executive summary which will describe the project purpose, process, and most significant findings.

- A review of policies and summary of recommendations for improvement.
- A phased schedule with cost estimates for the removal of barriers

The SSMC team will provide two (2) reproducible hard copies and an electronic copy in Adobe PDF format to the City.

5. Prepare and Deliver Final Transition Plan Update

Following a review by the City staff of the Draft Plan, the SSMC team will incorporate comments and prepare the Final Plan for delivery.

DELIVERABLES:

The final products delivered to the City will include:

1. Two (2) paper copies and one (1) PDF of the Draft ADA Self-Evaluation and Transition Plan Update
2. Two (2) paper copies and one (1) PDF of the Final ADA Self-Evaluation and Transition Plan Update
3. Field work results from the sample self-assessment provided in GIS format, compatible with the City's GIS system.

PROJECT FEES:

The Lump Sum Professional Fee for the 2017 Update to the City's ADA Transition Plan will be One Hundred Forty Eight Thousand, Six Hundred Eighty One and 68/100 dollars (\$148,681.68) as described in Attachment 1.

In accordance with the City's M/WBE goals, SSMC will designate the following portions of the project fees to the participating firms:

Firm	Role	Project Fee	Percent Allocated
Southeastern Surveying & Mapping Corp.	Prime	\$115,523.54	77.7%
Horizon Geo Services, Inc.	WBE Sub	\$19,714.40	13.3%
L & S Diversified, LLC	MBE Sub	\$13,443.75	9.0%
Total Project Portion allocated for M/WBE Participation			22.3%

SSMC will provide bi-weekly status reports to the City documenting that status of the project and the roadway self-assessment. The City will be invoiced on a monthly basis for work performed on the project. Payment is expected within 30 days of invoice.

Mr. Richard M. Howard, PE

City of Orlando, Florida – 2017 ADA Transition Plan Update Proposal

April 8, 2017

PROJECT SCHEDULE:

We anticipate completion of the above described work within sixteen (16) weeks after receipt of a written notice to proceed.

We look forward to the opportunity to work with you on this project.

Sincerely,



Brian R. Garvey, P.E.

Vice President, GIS Division Manager

ATTACHMENT 1 - SSMC Project Fee Summary Table

ATTACHMENT 2 – Sample “ADA Self Assessment Curb Ramp Inventory Report”

ATTACHMENT 3 – Sample “ADA Self Assessment Obstacle Inventory Report”

**Attachment I
Project Fee Summary Table**

City of Orlando, Florida – 2017 ADA Transition Plan Update Proposal										4/8/2017
SCOPE OF WORK	Estimated Quantities	SSMC	SSMC	SSMC	SSMC	Horizon	Horizon	L & S	Total Fee	
		Project Mgr. / PE (hrs)	GIS Analyst (hrs)		GIS Tech. (hrs)	2-Man Field Crew (hrs)	Geo Services Project Mgr (hrs)	Geo Services GIS Tech (hrs)		Diversified 1-Man Field Crew (hrs)
A. Review the City's Existing Documents and Policies										
A.1 Meet with City Staff to Introduce Project Tasks and Schedule	1 meeting	4	8	0	0	0	0	0	\$970.80	
A.2 Obtain and Review the City's Existing ADA Transition Plan		24	24	0	0	0	0	0	\$4,210.08	
A.3 Review Existing City Design Standards for ADA Facilities	3 meetings	24	24	0	0	0	0	0	\$4,210.08	
A.4 Prepare List of City Buildings to be Audited in Future Facilities Self Assessment Survey		32	8	32	0	0	0	0	\$2,637.57	
A.5 Prepare List of City Parking Lots to be Audited in Future Facilities Self Assessment Survey		24	6	24	0	0	0	0	\$1,978.18	
A.6 Prepare List of City Parks to be Audited in Future Facilities Self Assessment Survey		16	4	16	0	0	0	0	\$1,318.78	
B. Self Assessment to Identify Physical Obstacles Limiting Accessibility along Public Rights of Way										
B.1 Define Sample Roadways for Field Investigation	65 road centerline mi.	9	40	10	0	0	0	0	\$4,212.36	
B.2 Measure Sidewalk Widths & Identify Gaps	65 road centerline mi.	8	14	54	32	17	216	0	\$22,805.99	
B.3 Identify Sidewalk Roadside Barriers	65 road centerline mi.	8	14	56	34	0	0	0	\$9,143.64	
B.4 Identify Curb Ramp Barriers and Deficiencies	65 road centerline mi.	13	27	108	32	0	0	0	\$13,156.98	
B.5 Measure Excessive Longitudinal and Cross Slopes along Sidewalk and Ramps	65 road centerline mi.	12	29	117	0	0	0	176	\$19,559.23	
B.6 Identify Areas with Inadequate Passing Space	65 road centerline mi.	8	35	9	0	7	88	0	\$9,404.42	
B.7 Identify Signalization Barriers and Deficiencies	50 signalized intersections	2	5	21	0	0	0	63	\$5,247.02	
C. Review and Update Defined Methodologies for Making the Facilities Accessible										
C.1 Develop Standardized Methodologies for Repairs and Mitigation		32	40	6	0	0	0	0	\$6,480.42	
C.2 Develop Costs to Mitigate ADA Barriers		32	40	6	0	0	0	0	\$6,480.42	
D. Develop Schedule and Budgetary Cost Estimates for Making Access Modifications										
D.1 Estimate Quantities of Citywide Barriers from Sample Field Investigation		4	24	0	0	0	0	0	\$2,047.28	
D.2 Develop Prioritization Methodologies		16	40	16	0	0	0	0	\$5,298.08	
D.3 Prepare Implementation Schedule and Budget		16	24	8	0	0	0	0	\$3,783.28	
D.4 Identify Funding Alternatives		16	32	0	0	0	0	0	\$3,883.20	
D.5 Facilitate Public Workshop		16	24	16	0	0	0	0	\$4,221.60	
E. Prepare Updated Transition Plan Report										
E.1 Prepare Summary of Findings		16	4	0	0	0	0	0	\$1,999.36	
E.2 Prepare GIS Database		4	12	32	0	0	0	0	\$2,993.20	
E.3 Prepare Individual Facilities and Obstruction Reports		4	40	8	0	0	0	0	\$3,562.08	
E.4 Prepare Draft Transition Plan Update		32	32	8	0	0	0	0	\$6,051.76	
E.5 Prepare and Deliver Final Transition Plan Update		16	16	4	0	0	0	0	\$3,025.88	
Project Subtotal (hrs)		323.2	566	551	98	24	304	239		
Labor Rate (\$/hr)		\$108.14	\$67.28	\$54.79	\$125.54	\$94.93	\$57.45	\$56.25		
Project Total (\$)		\$34,951	\$38,080	\$30,189	\$12,303	\$2,278	\$17,436	\$13,444	\$148,681.68	

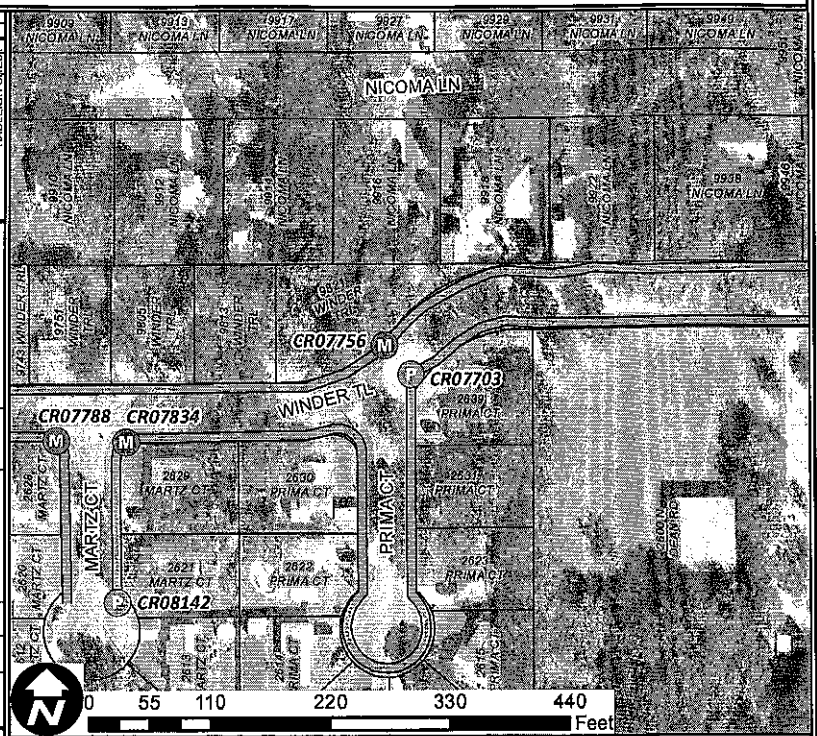
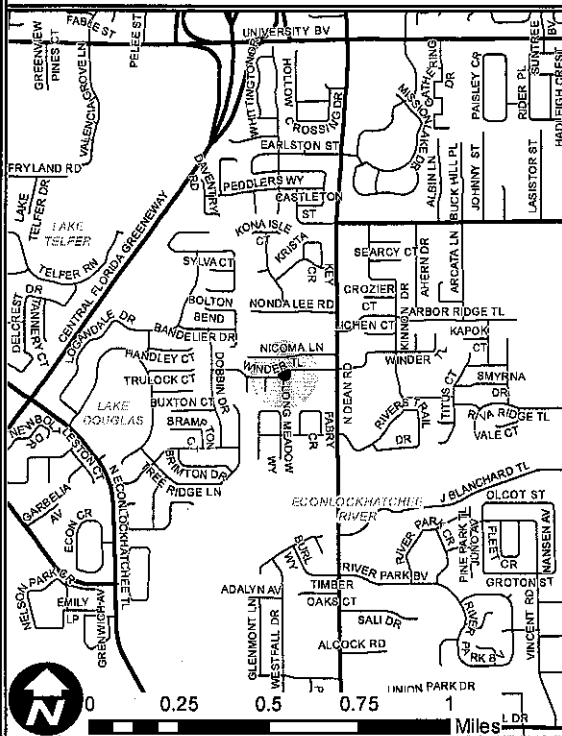
Fees Per Firm

Southeastern Surveying & Mapping Corp.	Prime	\$115,523.54	77.7%	Total M/WBE Participation 22.3%
Horizon Geo Services, Inc.	WBE	\$19,714.40	13.3%	
L & S Diversified, LLC	MBE	\$13,443.75	9.0%	
Total For All Firms		\$148,681.68	100%	

Southeastern Surveying & Mapping Corp.

ORANGE COUNTY ADA SELF ASSESSMENT

CURB RAMP INVENTORY REPORT



RAMP INFORMATION

Inventory Area: **01 004**

Ramp ID: **CR07703**

Status: **Present**

Sides: **None**

Curb Extensions: **No**

Type: **Diagonal**

Functionally Classified Road: **No**

Landing: **No**

Pedestrian Signal: **No**

Detectable Warning Surface: **None**

Quadrant: **SE**

Island: **No**

Road Name: **Winder Trail**

Direction: **N**

Marked Crossing: **No**

Crossroad Name: **Prima Court**

Inspection Date: **8/26/2015**

Midblock Crossing: **No**

Northing: **1545125.44**

Easting: **576755.84**

Cross Slope Compliant: **Yes**

Notes:

Latitude: **28° 35.042' N**

Longitude: **81° 14.846' W**

Running Slope Compliant: **Yes**

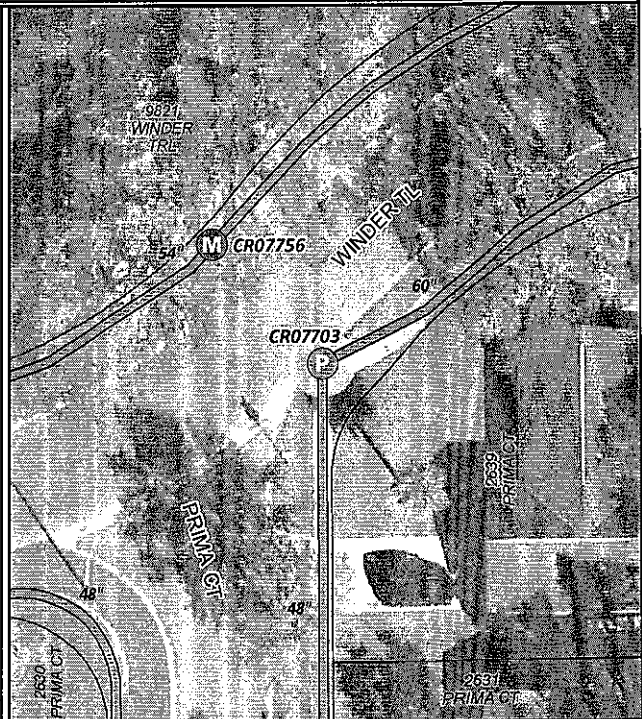
NAD 1983 State Plane Florida East FIPS 0901 U.S Survey Feet

Gutter Transition Compliant: **No**

LEGEND

- Missing
- Obscured
- Present
- Under Construction
- Sidewalk

CR00001 Ramp ID Number



Prepared By:
SOUTHEASTERN SURVEYING & MAPPING CORP.
6500 ALL AMERICAN BLVD. ORLANDO, FL 32810 (407) 292-8580



Orange County ADA
Sidewalk and Ramp Inspection

Date Prepared:
Oct 2015

Curb Ramp ID:
CR07703

**RAMP INFORMATION**Status: **Present**Cross Slope Compliant: **Yes**Gutter Transition Compliant: **No**Type: **Diagonal**Running Slope Compliant: **Yes**

Notes:

Prepared By:
SOUTHEASTERN SURVEYING & MAPPING CORP.
6500 ALL AMERICAN BLVD. ORLANDO, FL 32810 (407) 292-8580



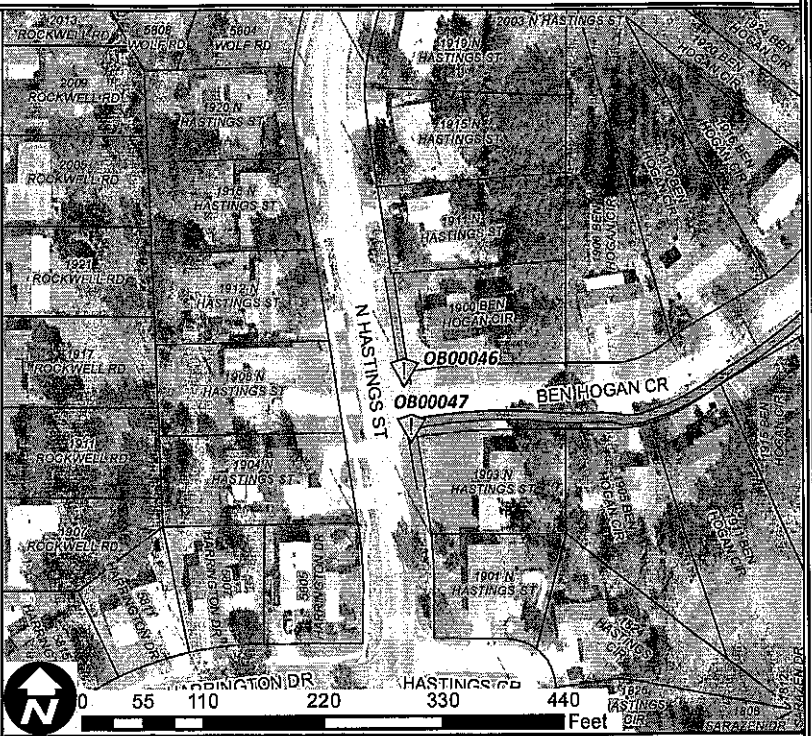
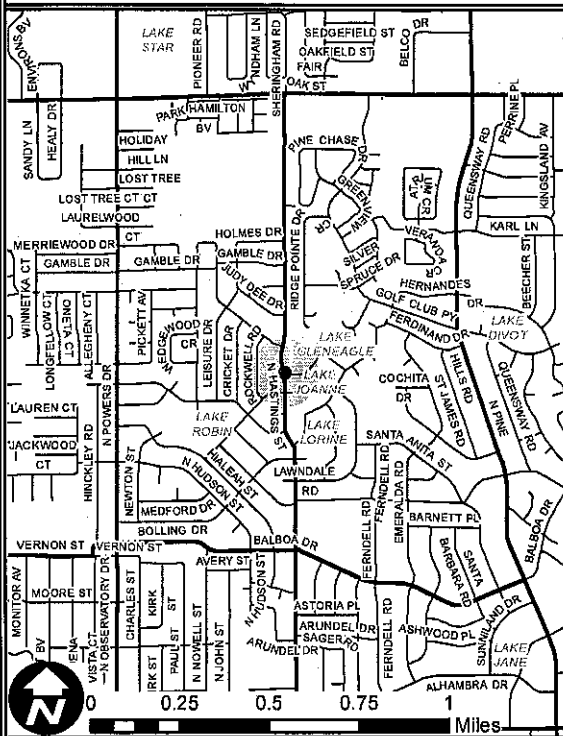
**Orange County ADA
Sidewalk and Ramp Inspection**

Date Prepared:
Oct 2015

Curb Ramp ID:
CR07703

ORANGE COUNTY ADA SELF ASSESSMENT

OBSTACLE INVENTORY REPORT



OBSTACLE INFORMATION

Inventory Area: **01 005**

Obstacle ID: **OB00046**

Road Name: **N Hastings Street**

Location: **Walkway**






Functionally Classified Road: **Yes**

Type: **Utility pole**

Inspection Date: **8/25/2015**

Notes: **_**

LEGEND

-  Obstacle
-  Missing
-  Obscured
-  Present
-  Under Construction

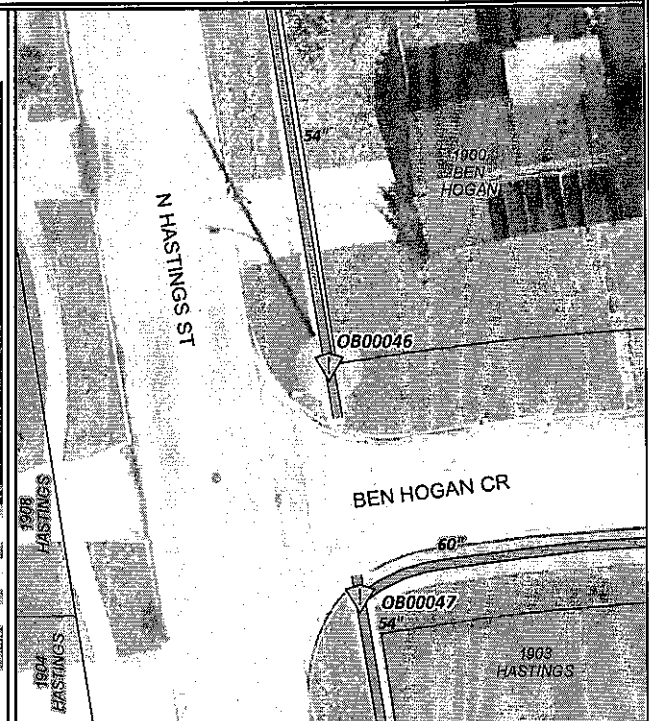
OB00001 Obstacle ID Number



Northing: **1539041.44** Easting: **508533.95**

Latitude: **28° 34.005' N** Longitude: **81° 27.596' W**

NAD 1983 State Plane Florida East FIPS 0901 U.S Survey Feet



Prepared By:
SOUTHEASTERN SURVEYING & MAPPING CORP.
6500 ALL AMERICAN BLVD. ORLANDO, FL 32810 (407) 292-8580



Orange County ADA
Sidewalk and Ramp Inspection

Date Prepared:
Oct 2015

Obstacle ID:
OB00046

**OBSTACLE INFORMATION**Location: WalkwayType: Utility pole

Notes: _

Prepared By:
SOUTHEASTERN SURVEYING & MAPPING CORP.
6500 ALL AMERICAN BLVD. ORLANDO, FL 32810 (407) 292-8580



Orange County ADA
Sidewalk and Ramp Inspection

Date Prepared:
Oct 2015

Obstacle ID:
OB00046