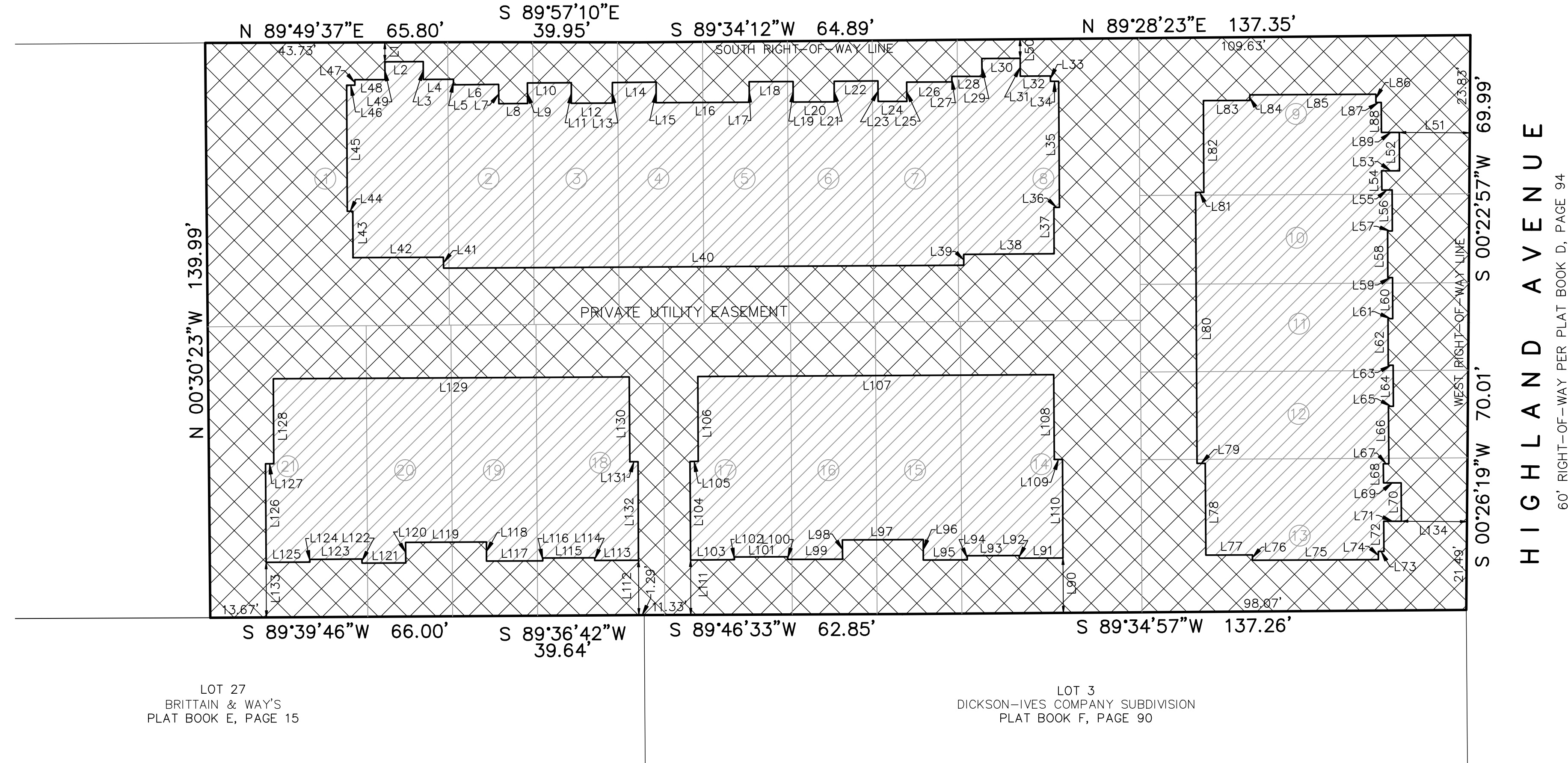


# IRVING ON PARK TOWNHOMES

A REPLAT OF LOTS 1 AND 2, DICKSON-IVES COMPANY SUBDIVISION AS RECORDED IN PLAT BOOK F, PAGE 90 OF THE PUBLIC RECORDS OF ORANGE COUNTY, FLORIDA, A REPLAT OF LOT 23, BRITTAIN & WAY'S AS RECORDED IN PLAT BOOK E, PAGE 15 OF THE PUBLIC RECORDS OF ORANGE COUNTY, FLORIDA AND A REPLAT OF LOTS 1 AND 2 AND THE EAST 30 FEET OF LOTS 3 AND 6, JOHN MAXWELL FERGUSON'S SUBDIVISION RECORDED IN PLAT BOOK J, PAGE 75 OF THE PUBLIC RECORDS OF ORANGE COUNTY, FLORIDA AND BEING IN SECTION 24, TOWNSHIP 22 SOUTH, RANGE 29 EAST, CITY OF ORLANDO, ORANGE COUNTY, FLORIDA

## PARK LAKE STREET

DEEPENE STREET PER PLAT BOOK E, PAGE 15 AND DEEPEANE STREET PER PLAT BOOK F, PAGE 90  
60' RIGHT-OF-WAY PER PLAT BOOK D, PAGE 94



LOT 27  
BRITTAIN & WAY'S  
PLAT BOOK E, PAGE 15

LOT 3  
DICKSON-IVES COMPANY SUBDIVISION  
PLAT BOOK F, PAGE 90

**LEGEND**

- = SET NAIL & DISK LB 6113 (PCP)
- = SET 1/2" IRON ROD & CAP LB#6113
- SCM □ = SET 4"x4" CONCRETE MONUMENT STAMPED PER LB 6113
- FCM ■ = FOUND CONCRETE MONUMENT (SIZE & IDENTIFICATION AS NOTED)
- ① = LOT NUMBER
- O/A = OVERALL
- LB = LICENSED BUSINESS NUMBER
- OR = OFFICIAL RECORD
- PRM = PERMANENT REFERENCE MONUMENT
- PSM = PROFESSIONAL SURVEYOR MAPPER
- PLS = PROFESSIONAL LAND SURVEYOR
- R/W = RIGHT-OF-WAY

LINE	BEARING	LENGTH
L1	S00°10'23"E	4.73'
L2	N89°41'02"E	9.33'
L3	S00°18'58"E	4.33'
L4	N89°41'02"E	7.33'
L5	S00°18'58"E	1.33'
L6	N89°41'02"E	11.00'
L7	S00°18'58"E	4.67'
L8	N89°41'02"E	7.00'
L9	N00°18'58"W	5.00'
L10	N89°41'02"E	10.67'
L11	S00°18'58"E	5.00'
L12	N89°41'02"E	10.00'
L13	N00°18'58"W	5.00'
L14	N89°41'02"E	10.67'
L15	S00°18'58"E	5.00'
L16	N89°41'02"E	22.67'
L17	N00°18'58"W	5.00'
L18	N89°41'02"E	10.67'
L19	S00°18'58"E	5.00'
L20	N89°41'02"E	10.00'
L21	N00°18'58"W	5.00'
L22	N89°41'02"E	10.67'
L23	S00°18'58"E	5.00'
L24	N89°41'02"E	7.00'
L25	N00°18'58"W	4.67'
L26	N89°41'02"E	11.00'
L27	N00°18'58"W	1.33'
L28	N89°41'02"E	7.33'
L29	N00°18'58"W	4.33'
L30	N89°41'02"E	9.33'
L31	S00°18'58"E	4.33'
L32	N89°41'02"E	7.33'
L33	S00°18'58"E	1.33'
L34	N89°41'02"E	2.00'

LINE	BEARING	LENGTH
L35	S00°18'58"E	30.67'
L36	S89°41'02"W	1.33'
L37	S00°18'58"E	11.33'
L38	S89°41'02"W	22.00'
L39	S00°18'58"E	2.67'
L40	S89°41'02"W	126.67'
L41	N00°18'58"W	2.67'
L42	S89°41'02"W	22.00'
L43	N00°18'58"W	11.33'
L44	S89°41'02"W	1.33'
L45	N00°18'58"W	30.67'
L46	N89°41'02"E	2.00'
L47	N00°18'58"W	1.33'
L48	N89°41'02"E	7.33'
L49	N00°18'58"W	4.33'
L50	S00°31'37"E	4.66'
L51	N89°37'03"W	17.14'
L52	S00°18'58"E	9.33'
L53	S89°41'02"W	4.33'
L54	S00°18'58"E	4.67'
L55	N89°41'02"E	2.50'
L56	S00°18'58"E	10.00'
L57	S89°41'02"W	1.17'
L58	S00°18'58"E	11.33'
L59	N89°41'02"E	1.17'
L60	S00°18'58"E	10.00'
L61	S89°41'02"W	1.17'
L62	S00°18'58"E	11.33'
L63	N89°41'02"E	1.17'
L64	S00°18'58"E	10.00'
L65	S89°41'02"W	1.17'
L66	S00°18'58"E	14.00'
L67	S89°41'02"W	1.33'
L68	S00°18'58"E	4.67'

LINE	BEARING	LENGTH
L69	N89°41'02"E	4.33'
L70	S00°18'58"E	9.33'
L71	S00°18'58"W	4.33'
L72	S00°18'58"E	7.33'
L73	S89°41'02"W	1.33'
L74	S00°18'58"E	2.00'
L75	S89°41'02"W	30.67'
L76	N00°18'58"W	1.33'
L77	S89°41'02"W	11.33'
L78	N00°18'58"W	22.33'
L79	S89°41'02"W	2.00'
L80	N00°18'58"W	66.00'
L81	N89°41'02"E	2.00'
L82	N00°18'58"W	22.33'
L83	N89°41'02"E	11.33'
L84	N00°18'58"W	1.33'
L85	N89°41'02"E	30.67'
L86	S00°18'58"E	2.00'
L87	N89°41'02"E	1.33'
L88	S00°18'58"E	7.33'
L89	N89°41'02"E	4.33'
L90	N00°25'03"W	13.37'
L91	S89°41'11"W	10.67'
L92	N00°18'49"W	0.67'
L93	S89°41'11"W	12.67'
L94	S00°18'49"E	1.00'
L95	S89°41'11"W	10.67'
L96	N00°18'49"W	5.00'
L97	S89°41'11"W	19.67'
L98	S00°18'49"E	4.67'
L99	S89°41'11"W	13.33'
L100	N00°18'49"W	0.67'
L101	S89°41'11"W	13.00'

LINE	BEARING	LENGTH
L102	S00°18'49"E	0.67'
L103	S89°41'11"W	10.67'
L104	N00°18'49"W	24.00'
L105	N89°41'11"E	2.00'
L106	N00°18'49"W	20.67'
L107	N89°41'11"E	86.67'
L108	S00°18'49"E	20.67'
L109	N89°41'11"E	2.00'
L110	S00°18'49"E	24.00'
L111	N00°13'27"W	13.36'
L112	N00°23'18"W	13.35'
L113	S89°40'53"W	10.67'
L114	N00°19'07"W	0.67'
L115	S89°40'53"W	12.67'
L116	S00°19'07"E	0.67'
L117	S89°40'53"W	13.67'
L118	N00°19'07"W	4.67'
L119	S89°40'53"W	19.67'
L120	S00°19'07"E	5.00'
L121	S89°40'53"W	10.67'
L122	N00°19'07"W	1.00'
L123	S89°40'53"W	12.67'
L124	S00°19'07"E	0.67'
L125	S89°40'53"W	10.67'
L126	N00°19'07"W	24.00'
L127	N89°40'53"E	2.00'
L128	N00°19'07"W	20.67'
L129	N89°40'53"E	86.67'
L130	S00°19'07"E	20.67'
L131	N89°40'53"E	2.00'
L132	S00°19'07"E	24.00'
L133	N00°20'14"W	13.41'
L134	N89°33'41"W	15.94'

**POLARIS ASSOCIATES INC.**  
PROFESSIONAL SURVEYING LB 6113  
2165 SUNNYDALE BOULEVARD, SUITE D  
CLEARWATER, FLORIDA 33765  
(727) 461-6113