

SOLID WASTE WEEKLY COLLECTION PILOT

CITY COUNCIL UPDATE
March 20, 2017

What is the Weekly Collection Pilot?

- Test of once per week collection of each type of solid waste
- Recycling is increased to weekly pick up, from every other week
- Garbage collection is reduced to once per week
- Yard waste & large item collection remained weekly
- 6 month pilot, extended to 1 year



Why Try Weekly Collection?

- Many customers ask for more recycling collection
 - “Carts over fill if only collected every 2 weeks”
 - “Hard to keep track of which week is my week for pickup”
 - “If I miss my week, I can’t wait 2 more weeks”
- Some customers say they don’t need 2x per week garbage collection
 - Many only put cart out once per week
 - Most customers carts are only half full on collection day
- Many other jurisdictions have weekly collection
 - We can save fuel and reduce pollution
- Weekly recycling will further the City’s GreenWorks goal to divert 100% of waste by 2040



Where was the Pilot?

Neighborhood & Comm. District	
<i>Location</i>	<i>District</i>
Audubon Park	3
Baldwin Park (North & South)	3
Carver Shores	6
Fairway Cove (Metro West)	6
Timberleaf	5
New Malibu	5
Westchester (Metro West)	5

Tested in areas with diverse demographics (size of household, race, income) & recycling rates



Main Goal: **Identify and address customer concerns**

- Garbage volume of a large family
 - Issue a 2nd cart at no extra charge, if they recycle
- Occasional need for extra garbage pick up
 - Family event or missed set out
 - Regular service expanded to add 3 extra pick ups per year (Not on holidays)
- 4 collections per week (garbage, recycling, yard waste, bulky)
- Odors, bugs – bagged well and cart in good repair eliminates odors & vectors
 - Tightly bagged trash
 - Simple deodorizer works (ex. Febreze)
 - Cart with no cracks - 10 year replacement warranty



Pilot Results: (4,200 homes)

- Recycling growth - 242 new recyclers, 20% increase on one route
 - Carver Shores & Timberleaf from 1.25T/wk to 4T/wk
- Very small recycle growth in Baldwin Park and Audubon
 - recycling nearly unchanged
 - already were high recyclers
- Second garbage carts, 111 homes
- Few missed set outs
 - less than one per week
- Alley collection was smooth but more expensive
- Friday garbage had few complaints after week 3



Lessons Learned in Pilot

- Roll out should be a phased implementation
 - SW staff to focus on questions & concerns makes the process go smoothly
- Extensive outreach; meetings, social media, door to door, etc.
 - Social media is powerful in many areas, letters work well in the rest
- Dedicated Supervisor & part-time Public Outreach Specialist
- Same driver for recycling and garbage – fewer errors
- Rework bulky collection method to help yard waste disposal
- How to handle holidays
 - Make up day for collection on Thanksgiving & Christmas
 - Weekly garbage smooths out heavy holiday collection days

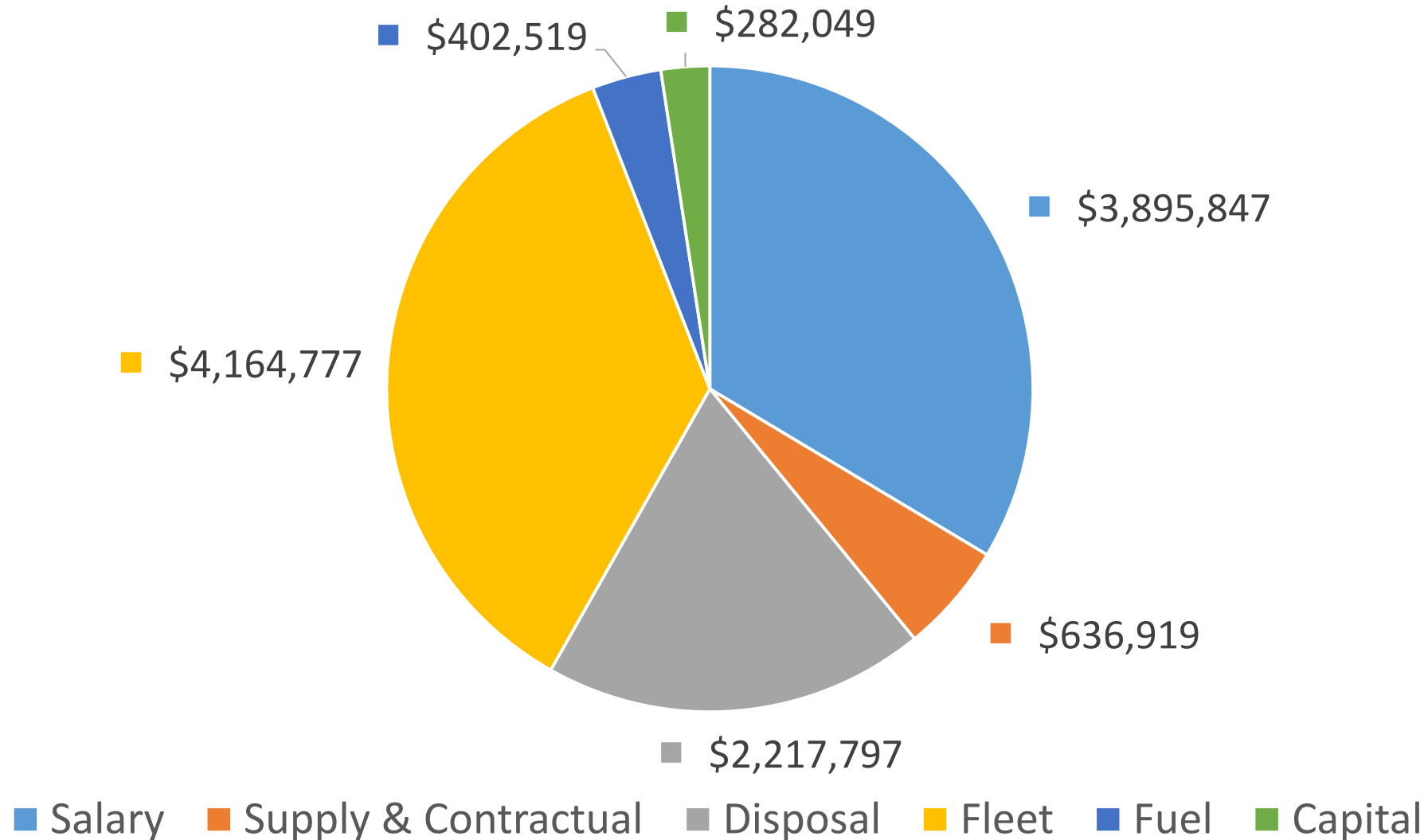


Cost Savings

- Fuel savings
 - 2 fewer trips per month (from 18 to 16 trips /month)
 - 10% less fuel used on the pilot routes
- Very small increase in recycle tonnage, small disposal savings
 - \$420 per month saved in disposal
- Pilot indicates we could forgo the annual 4% rate increase in October
 - Forgo \$.77 adjustment scheduled for October 1st
- Continue to track cost & savings as pilot is expanded



Residential Collection Costs



What Do Other Jurisdictions in Florida Do?

	Garbage	Recycling	Ywaste	Bulky	
Orange County	1	1	1	on call	
Apopka	2	biweekly	1	1	
Lake County	1	1	1	on call	
Tampa	2	1	1	on call	
Polk County	1	1	1	1	
Clermont	1	1	1	1	
Lee County (pvt. cans)	1	1	1	on call	
Osceola County	1	1	1	on call	
Brevard County	2	1	1	on call	

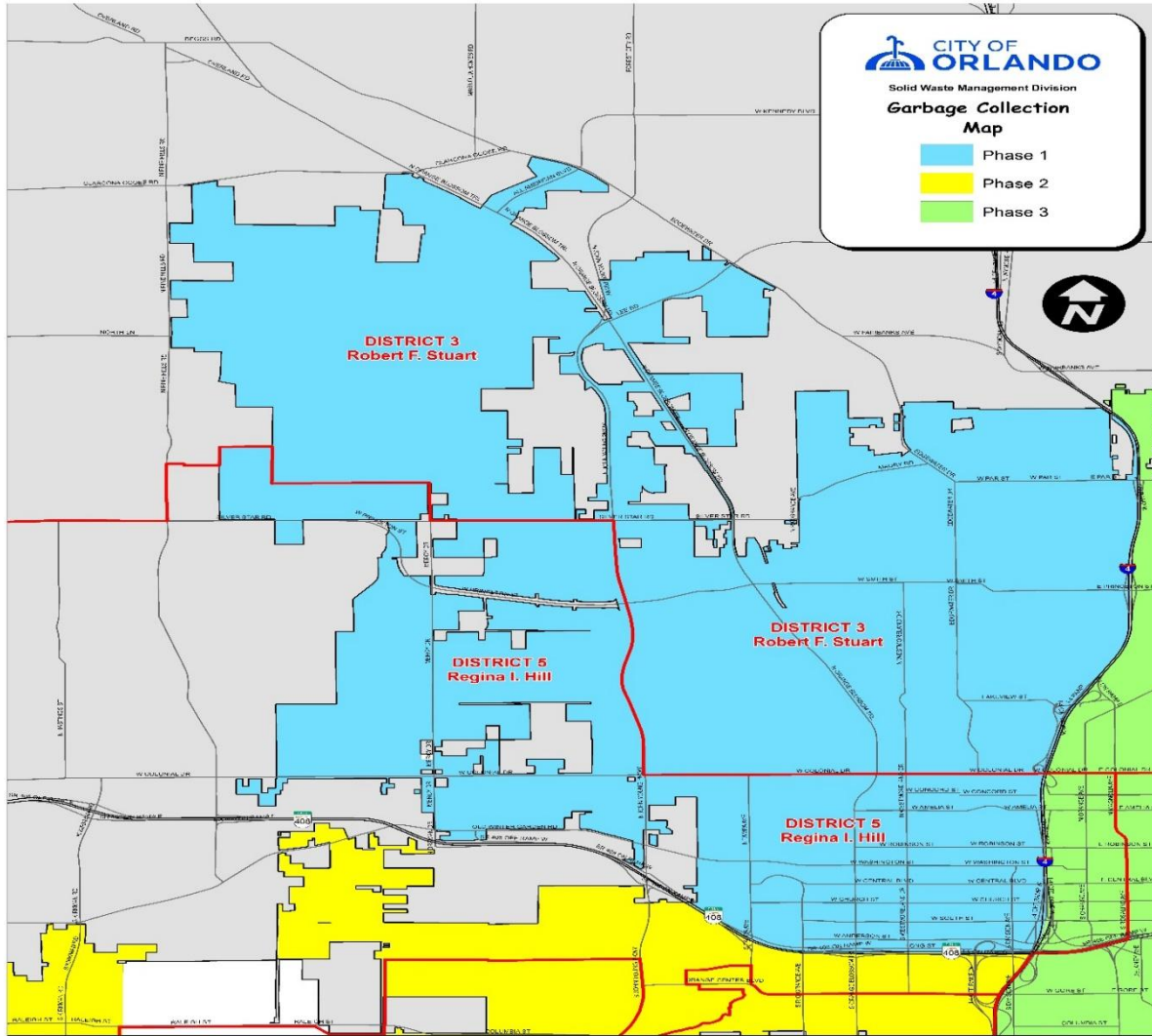


Proposed Next Steps - Expand Pilot Citywide

- Propose 3 phases, 1/3 of City every 8 weeks, 6 months total
 - May 1 – June 25
 - June 26 (avoid July 4th) – August 20
 - August 21 (avoid Labor Day) – October 15
- Amend Chapter 28 (Solid Waste) this summer
- Forgo scheduled 4% annual rate increase effective 10/1/17
- A month of customer outreach before each phase
 - Meetings, letters, social media
 - Information Locator Webpage



Phase 1 – May 1 (Start Date)

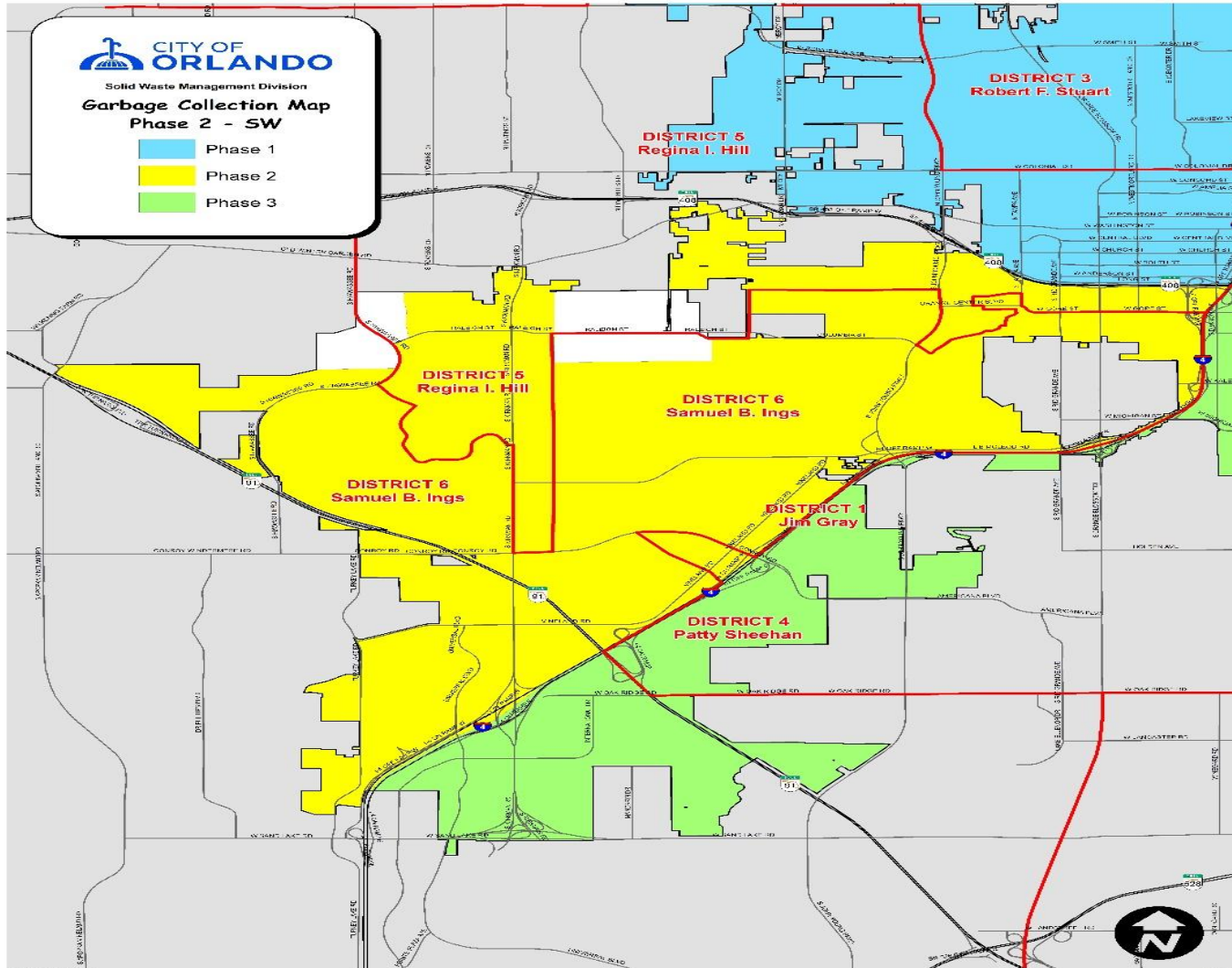


Neighborhoods

Rosemont
Rock Lake
College Park
The Willows
Spring Lake
Parramore
Harrelson Estates
Callahan
Lake Dot
Lorna Doone
Lake Fairview
Mercy Drive
Palomar



Phase 2 – June 26 (Start Date)



Neighborhoods

Washington Shores

Lake Mann

Lake Sunset

Malibu Groves

Holden Heights

Clear Lake

Catalina

Metro West

Richmond Heights

Lake Richmond &

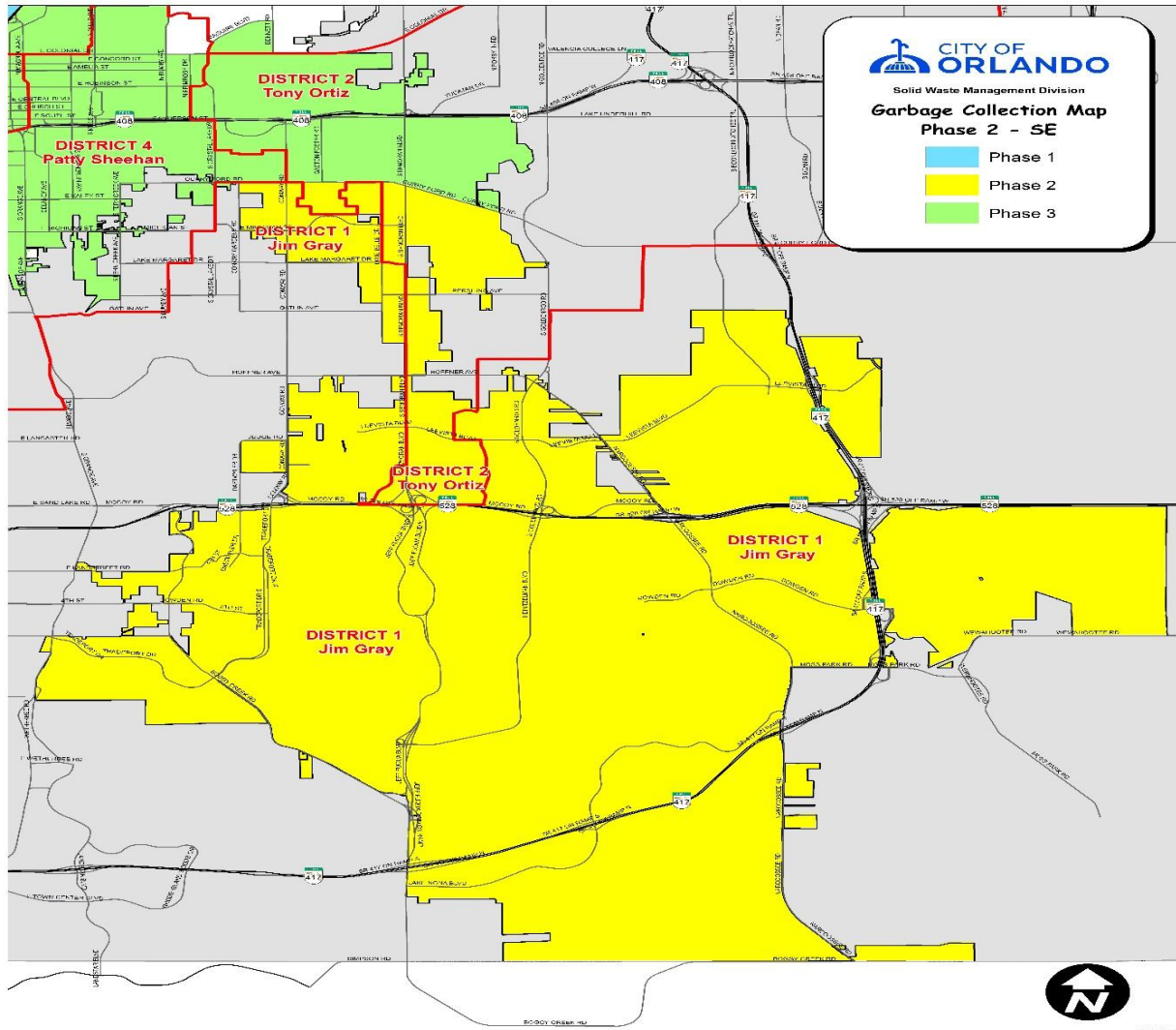
Estates

Windover

Johnsons Village



Phase 2 – June 26 (Start Date)

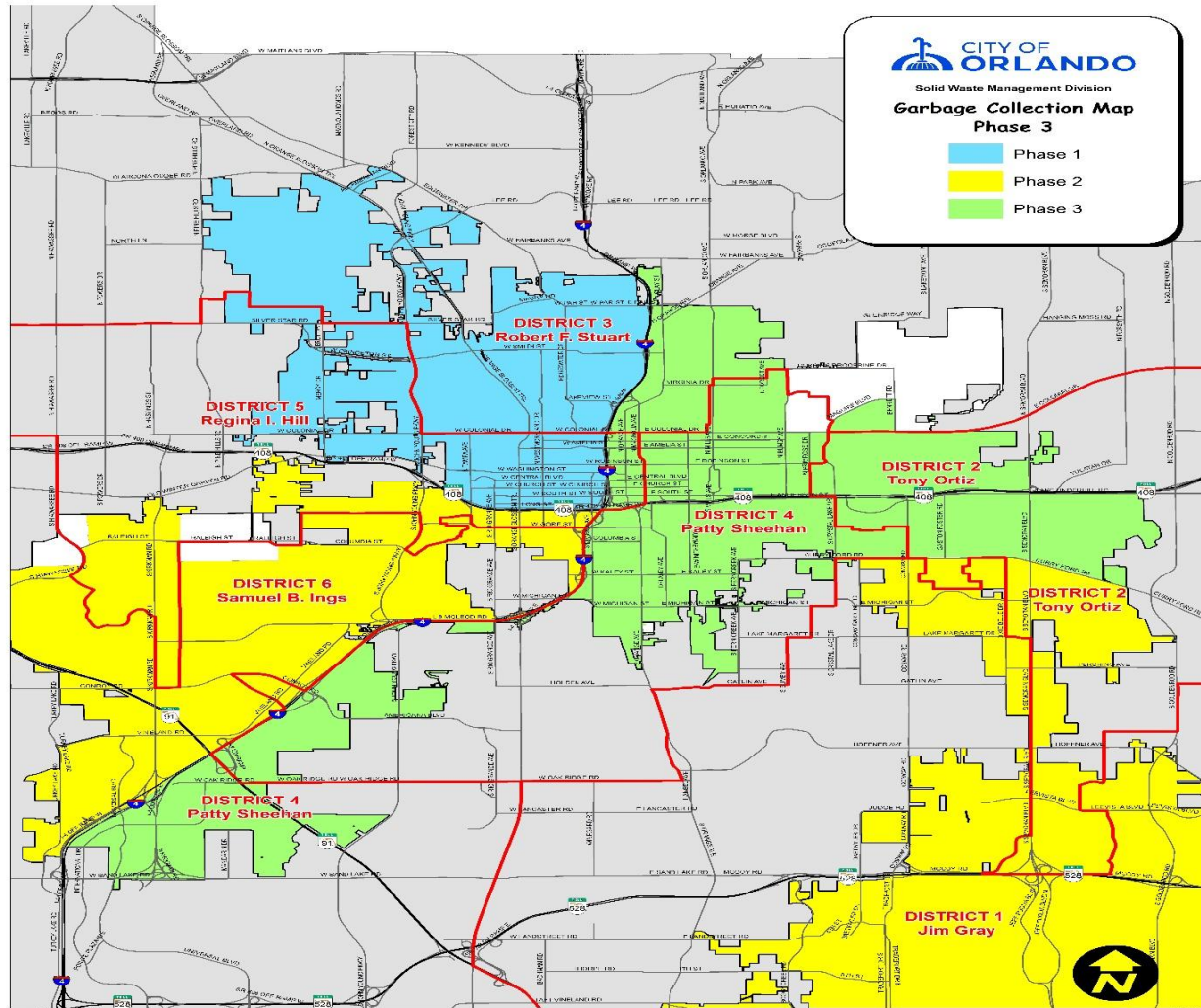


Neighborhoods

Ventura
South Semoran
Vista East
Southport
Boggy Creek
Lake Nona
Northlake Park
Storey Park
Crescent Park
Lake Nona South
Bryn Mawr
Dixie Belle
Dover Estates
Countryside



Phase 3 – August 21 (Start Date)



Neighborhoods

Azeala Park
Englewood
Lake Underhill
Dover Sores
Lake Como
Lake Davis
Bel Air
Lake Cherokee
Delaney Park
Wadeview
Colonialtown
Lancaster
Southern Oaks
South Orange
Lawsona/Ferncreek
Lake Eola
Park Lake Highland
North Orange
Rose Isle
Lake Formosa



What Do We Hope to Learn from an Expanded Pilot?

- Will recycling increase in other neighborhoods?
 - Carver Shores & Timberleaf had nice increases in recycling
- Audubon Park had the highest recycling participation before pilot
 - Virtually no increase in recycling during pilot
- Baldwin Park had above average recycling participation
 - Very small recycling increase during pilot
- Many neighborhoods have the potential for large increases
 - Increased recycling is often combined with reduced garbage disposal fees



Thank You. Questions?



Notes

<i>Expenses</i>			
Acct. #	Title	366	
6010	Salary	\$ 3,895,847	28%
6310	Supply & Contractual	\$ 636,919	5%
6390	Disposal	\$ 2,217,797	16%
6550	Fleet	\$ 4,164,777	30%
	Fuel	\$ 402,519	3%
6611	Capital	\$ 282,049	2%
	Total Expenses	\$ 13,700,609	

Driver \$ 69,000

Customers 53,000

3 drivers & fuel \$ 0.48/mo

ASL Fuel = 24 gal/day