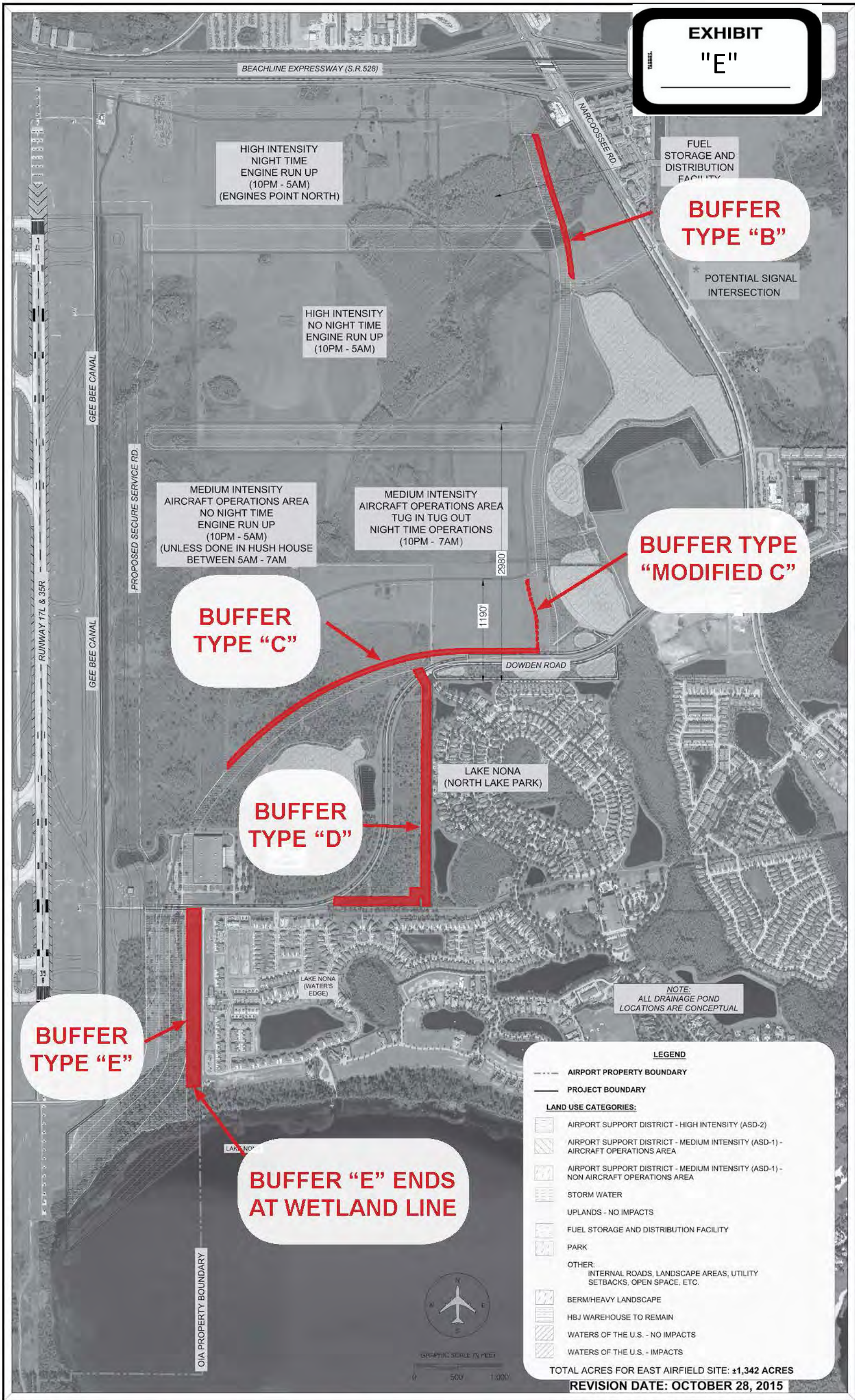


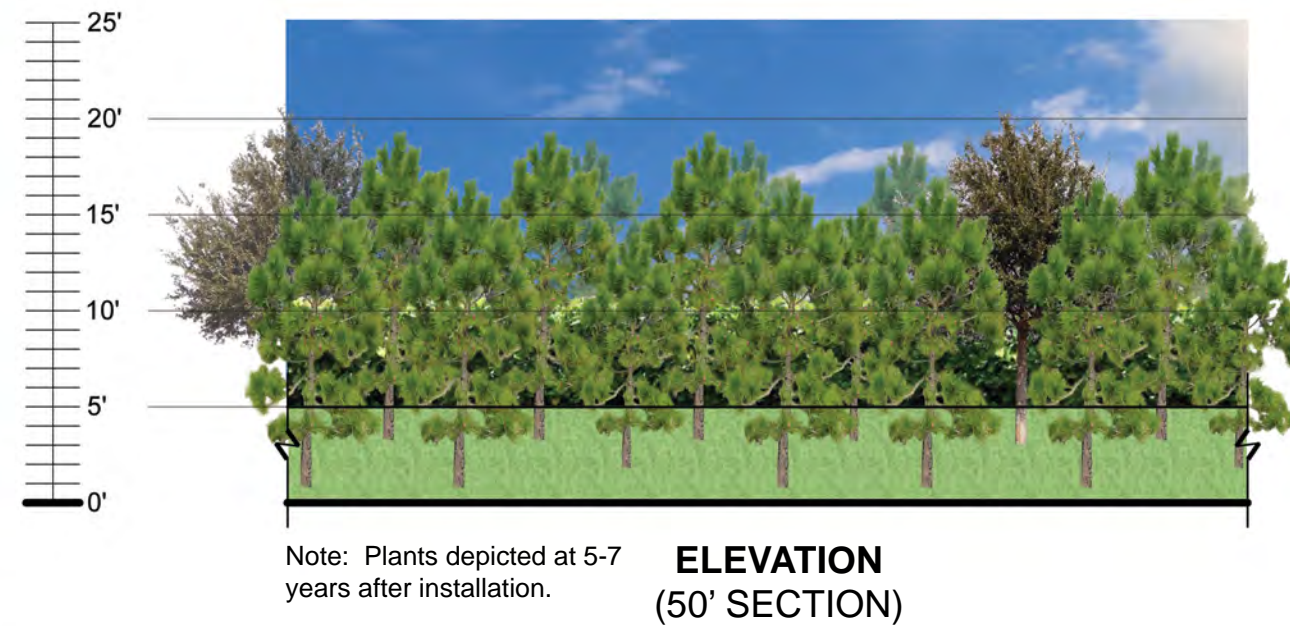
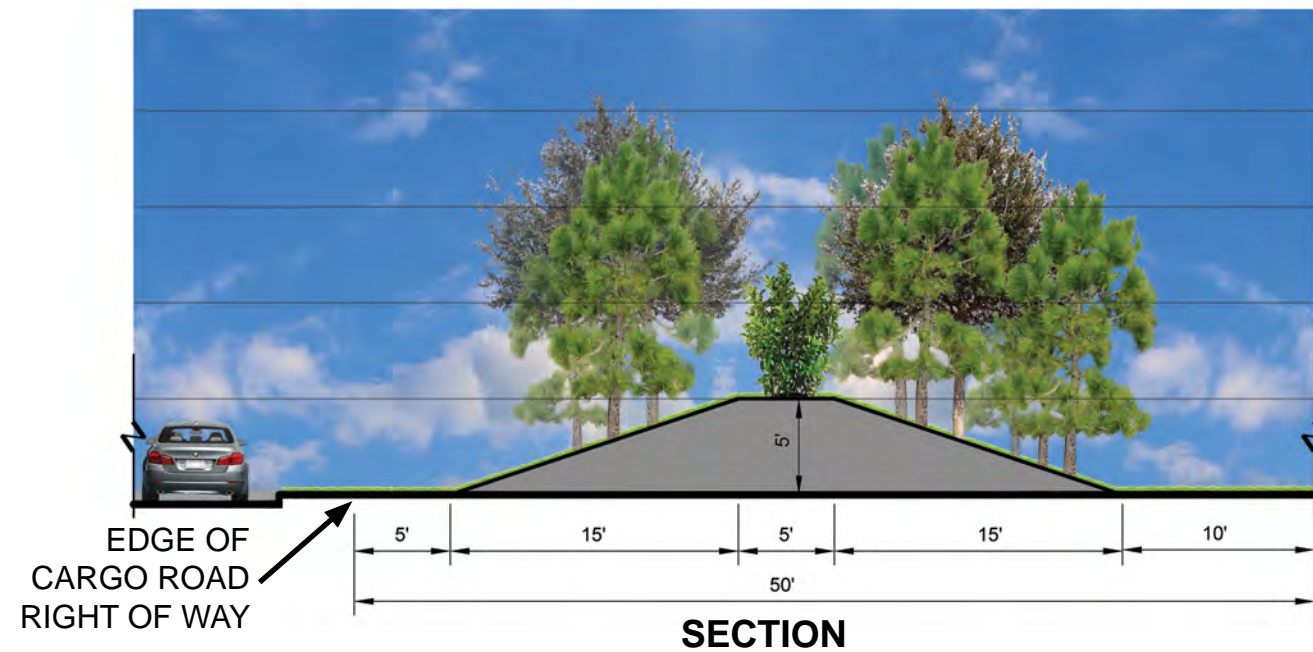
**EXHIBIT**  
**"E"**



**EAST AIRFIELD LANDSCAPE BUFFERS KEY PLAN**

Date: 6-15-2016





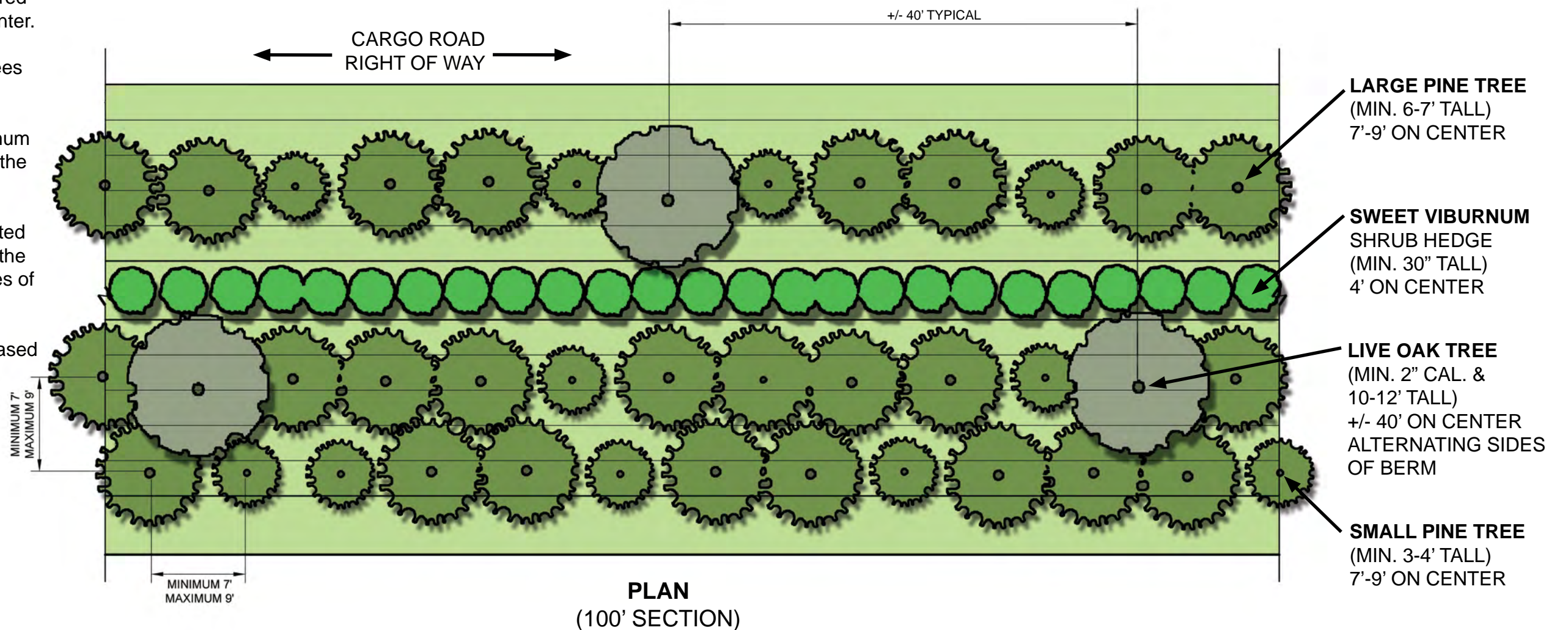
**NOTES:**

1. For a more natural appearance, pine trees shall be a minimum of two types of native species in informal staggered rows of plants spaced 7' to 9' on center.
2. A minimum of 70% of the pine trees must be the large size.
3. Plants must be at least the minimum size & spacing indicated on plan at the time of installation.
4. The projected plant growth depicted is based upon the general habit of the plant species with standard practices of care and maintenance.
5. Final planting design may vary based upon final engineering of berm and adjacent infrastructure.

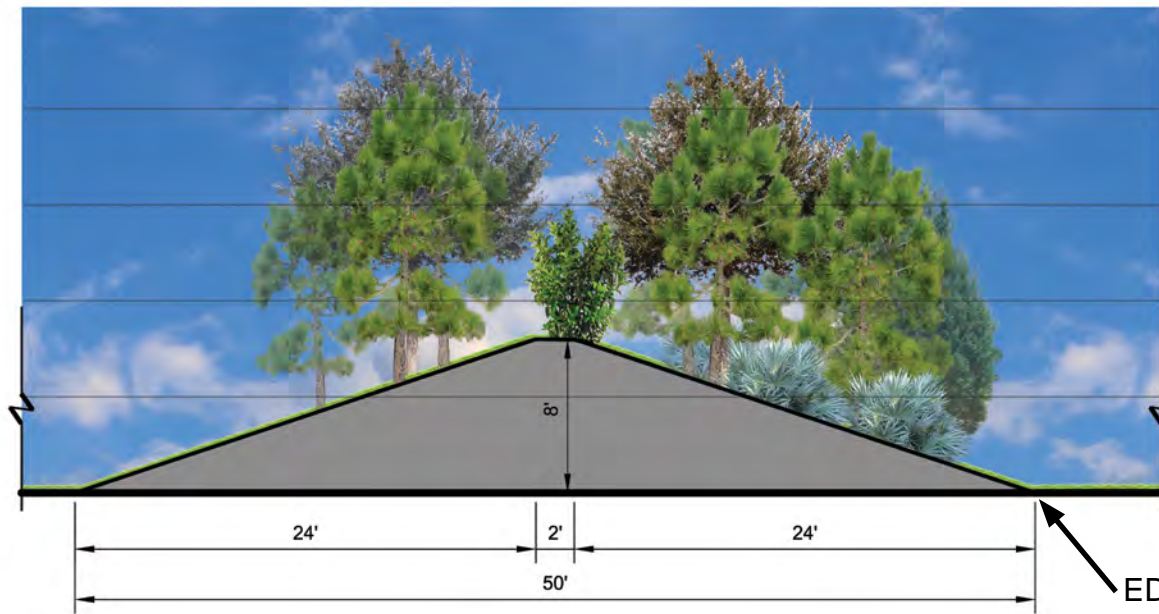
# **EAST AIRFIELD LANDSCAPE BUFFERS**

## **BUFFER TYPE "B"**

Date: 6-15-2016







**SECTION**



Note: Plants depicted at 5-7 years after installation.

**ELEVATION  
(50' SECTION)**

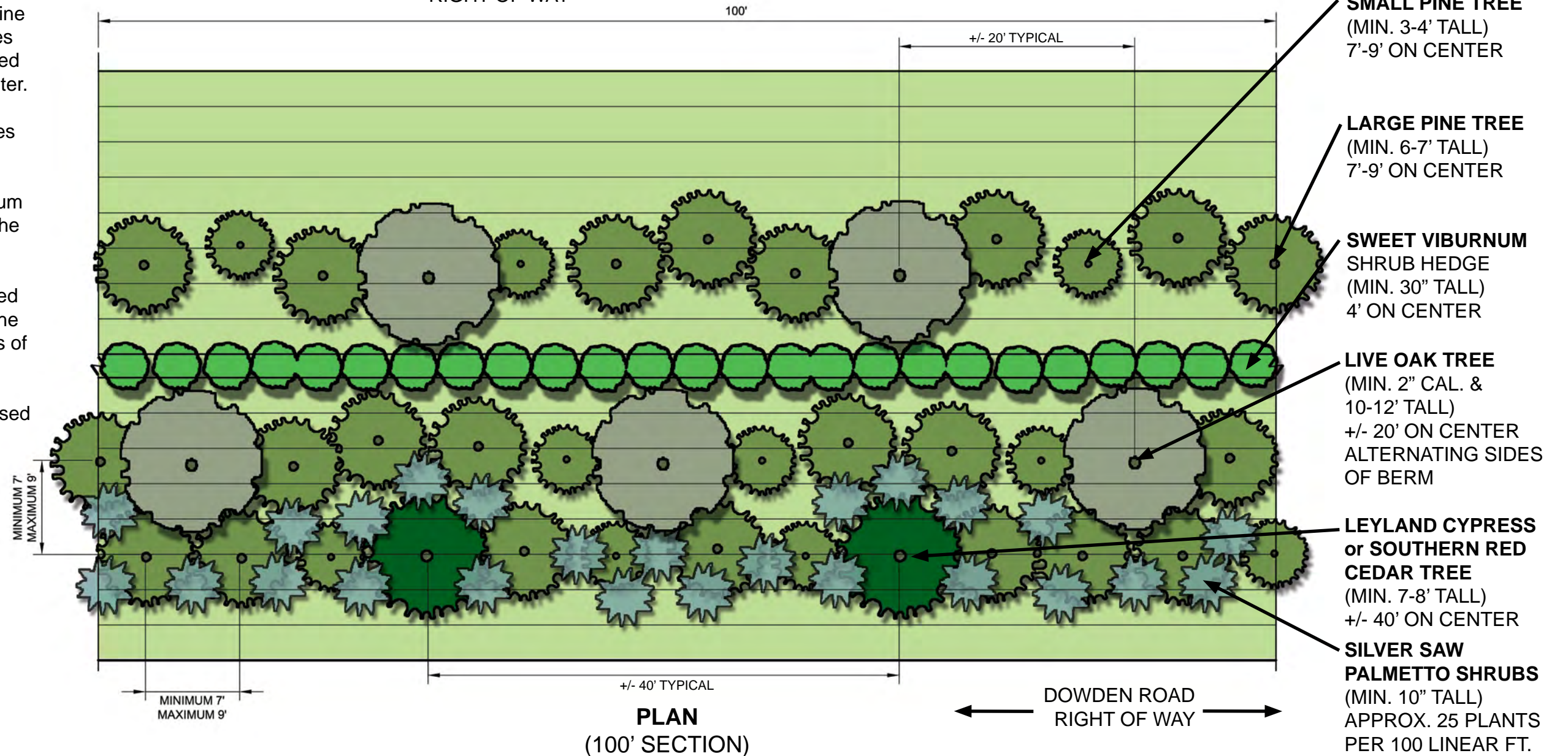
**NOTES:**

1. For a more natural appearance, pine trees shall be a minimum of two types of native species in informal staggered rows of plants spaced 7' to 9' on center.
2. A minimum of 70% of the pine trees must be the large size.
3. Plants must be at least the minimum size & spacing indicated on plan at the time of installation.
4. The projected plant growth depicted is based upon the general habit of the plant species with standard practices of care and maintenance.
5. Final planting design may vary based upon final engineering of berm and adjacent infrastructure.

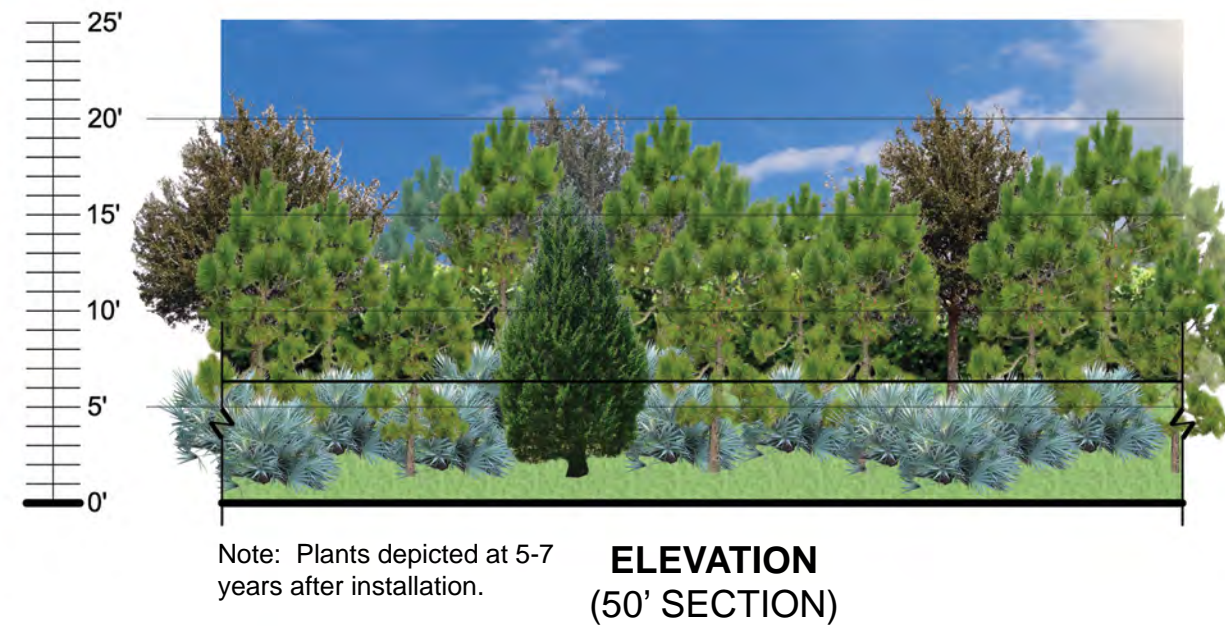
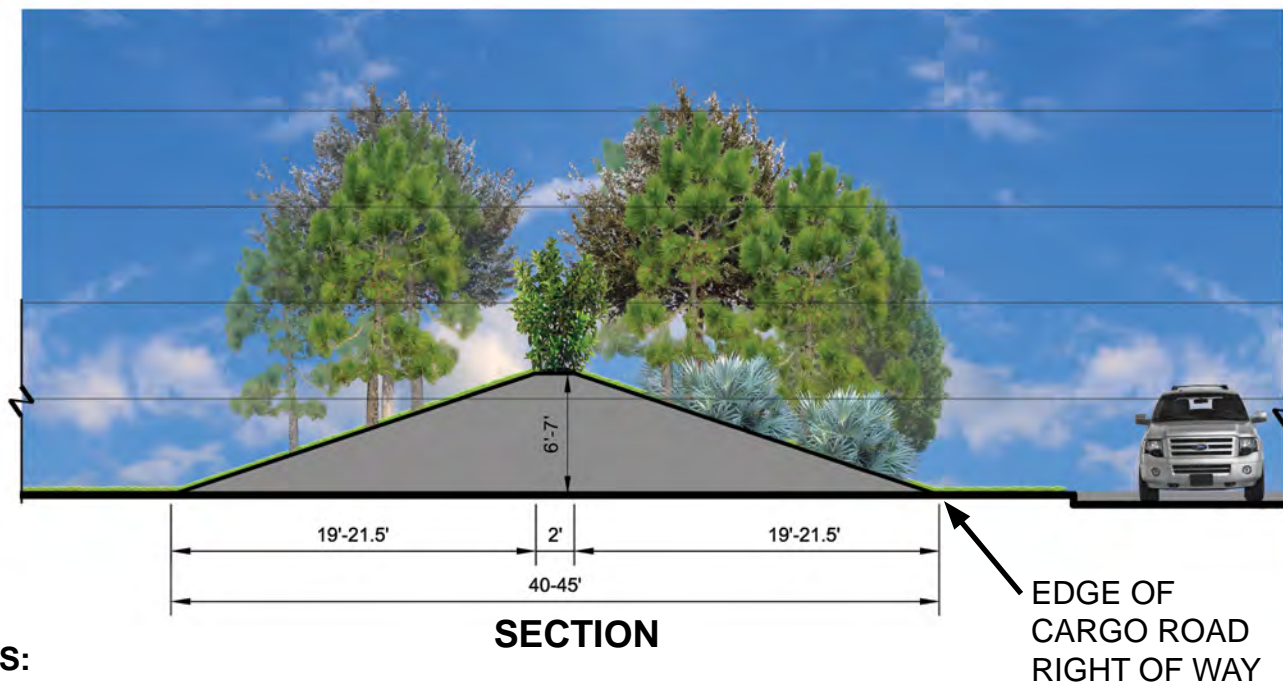
# **EAST AIRFIELD LANDSCAPE BUFFERS**

## **BUFFER TYPE "C"**

Date: 6-15-2016







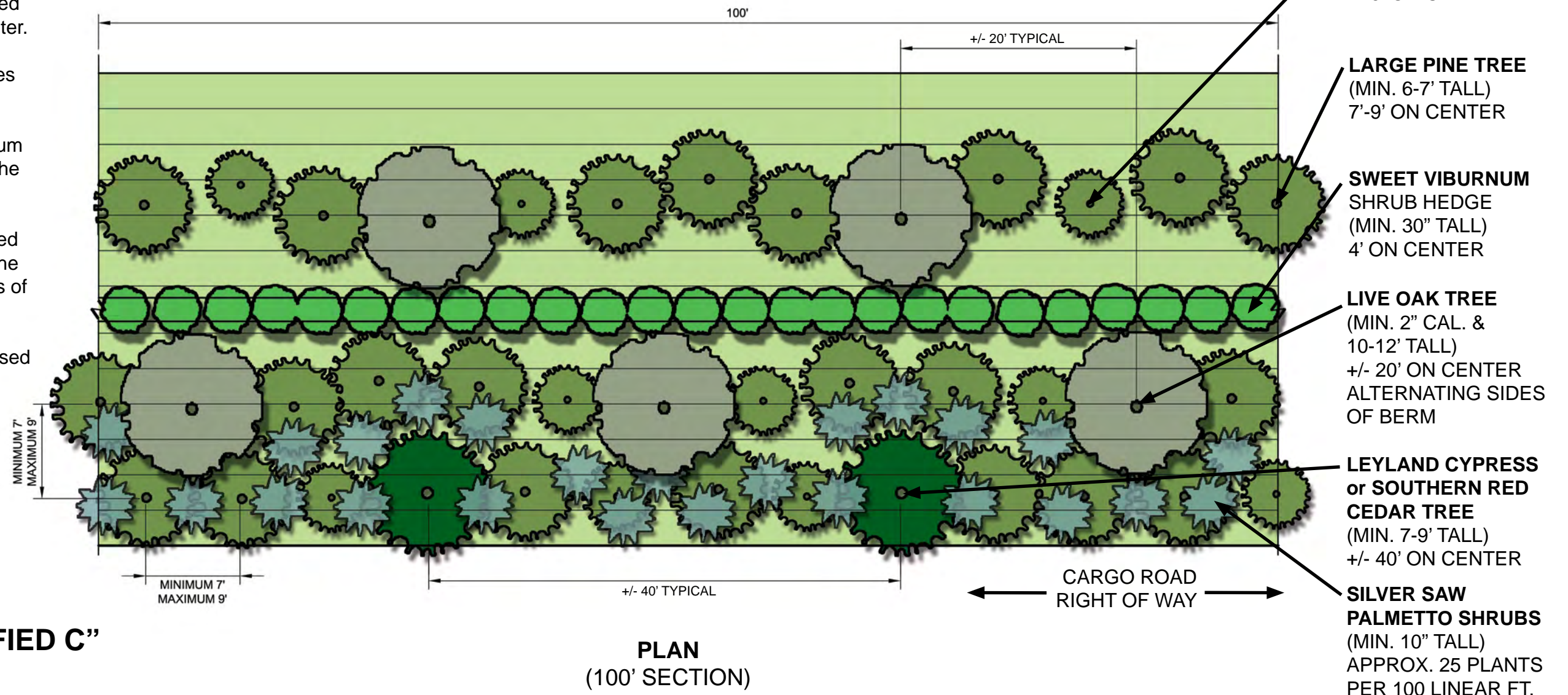
#### NOTES:

1. For a more natural appearance, pine trees shall be a minimum of two types of native species in informal staggered rows of plants spaced 7' to 9' on center.
2. A minimum of 70% of the pine trees must be the large size.
3. Plants must be at least the minimum size & spacing indicated on plan at the time of installation.
4. The projected plant growth depicted is based upon the general habit of the plant species with standard practices of care and maintenance.
5. Final planting design may vary based upon final engineering of berm and adjacent infrastructure.

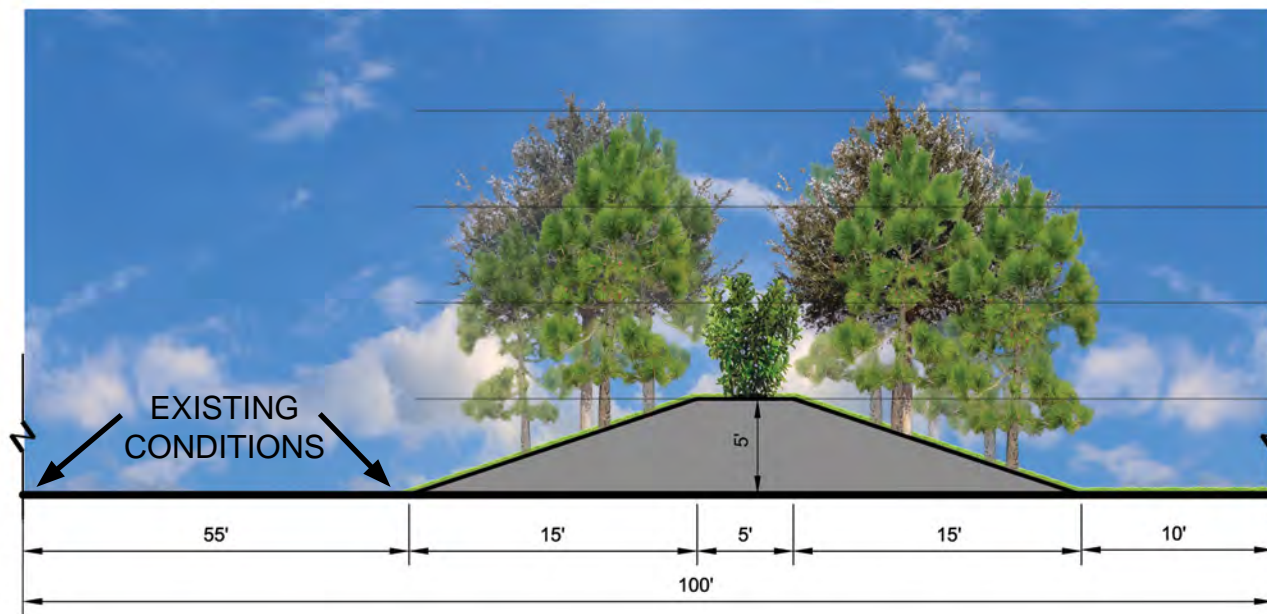
## EAST AIRFIELD LANDSCAPE BUFFERS

### BUFFER TYPE "MODIFIED C"

Date: 6-15-2016







**SECTION**



**ELEVATION  
(50' SECTION)**

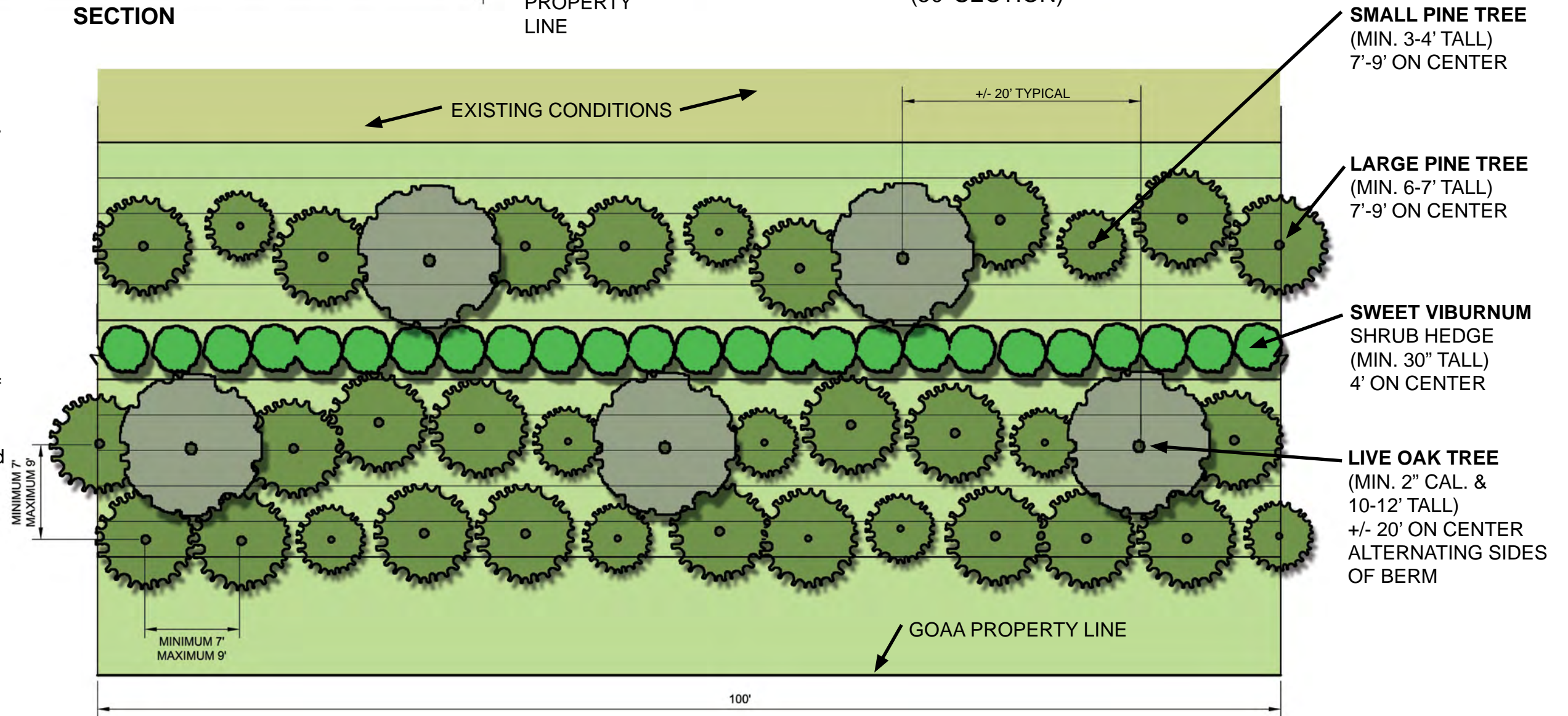
**NOTES:**

1. For a more natural appearance, pine trees shall be a minimum of two types of native species in informal staggered rows of plants spaced 7' to 9' on center.
2. A minimum of 70% of the pine trees must be the large size.
3. Plants must be at least the minimum size & spacing indicated on plan at the time of installation.
4. The projected plant growth depicted is based upon the general habit of the plant species with standard practices of care and maintenance.
5. Final planting design may vary based upon final engineering of berm and adjacent infrastructure.

# **EAST AIRFIELD LANDSCAPE BUFFERS**

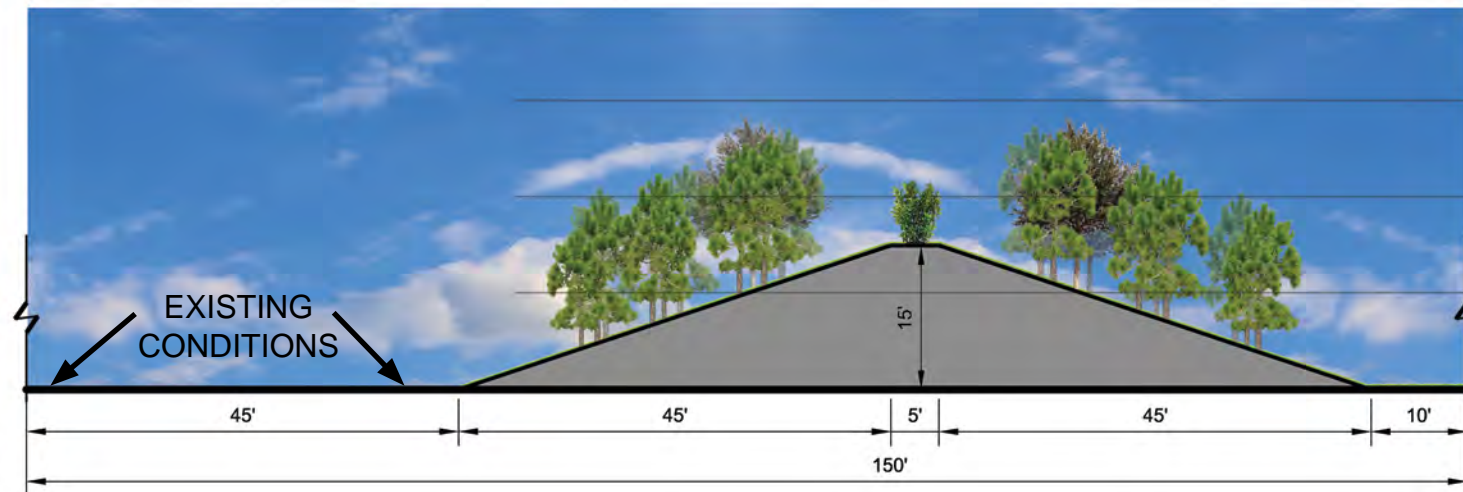
## **BUFFER TYPE "D"**

Date: 6-15-2016

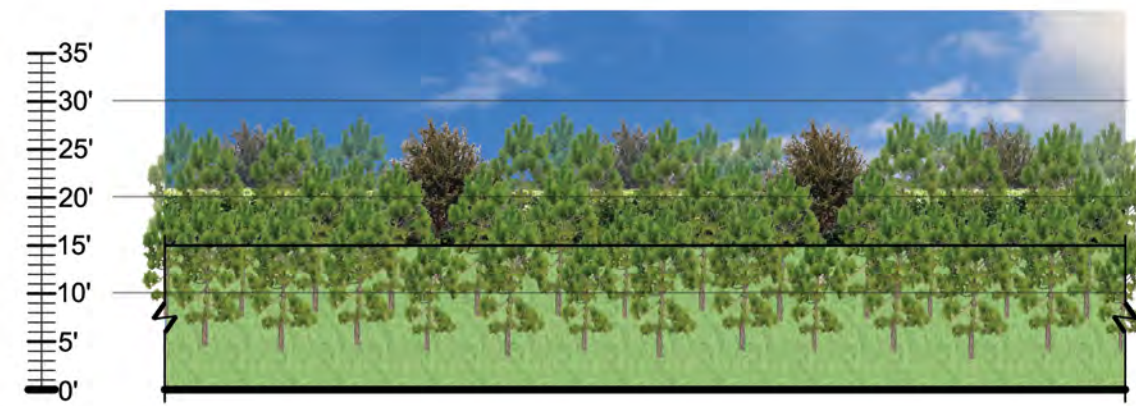


**PLAN  
(100' SECTION)**





**SECTION**



**ELEVATION  
(100' SECTION)**

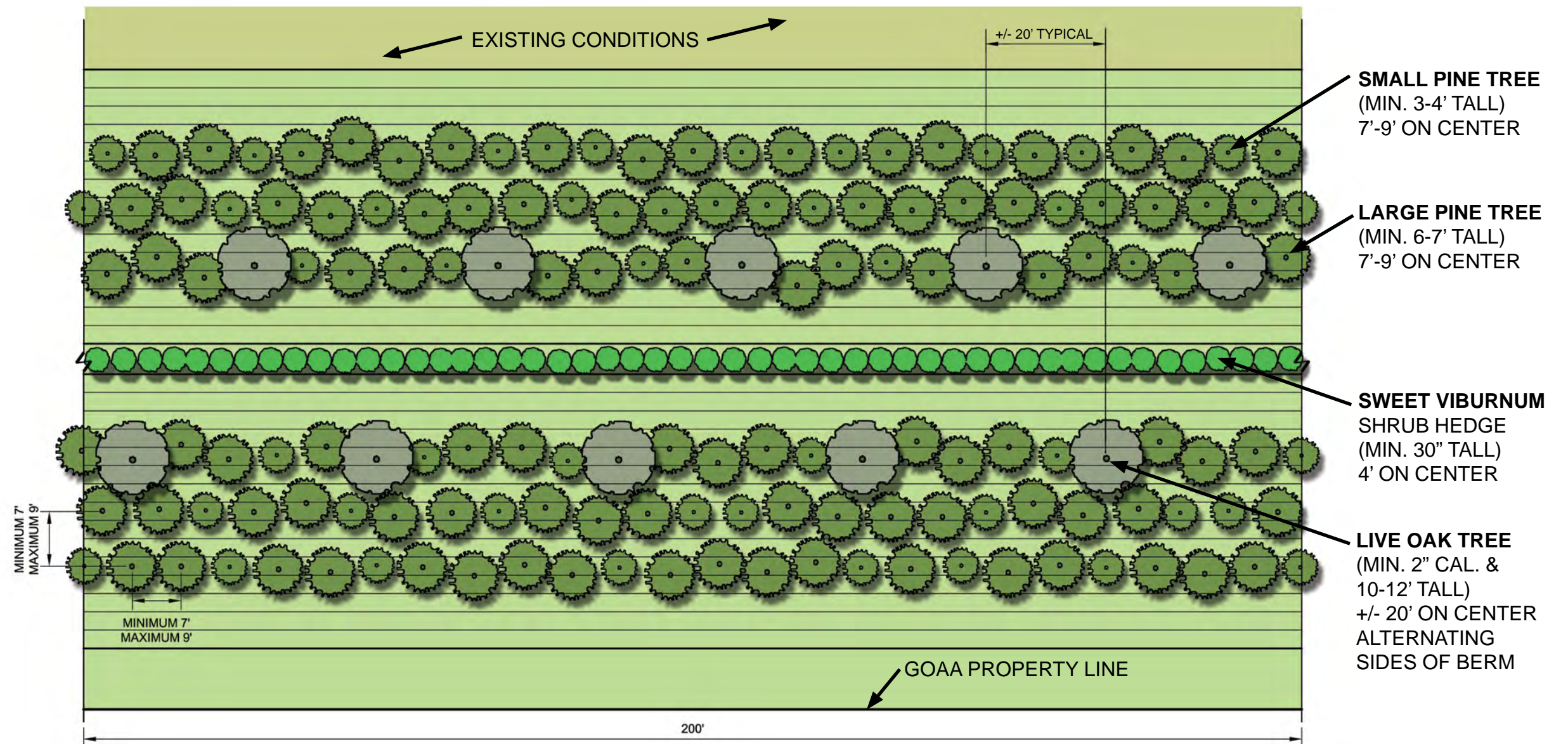
**NOTES:**

1. For a more natural appearance, pine trees shall be a minimum of two types of native species in informal staggered rows of plants spaced 7' to 9' on center.
2. A minimum of 70% of the pine trees must be the large size.
3. Plants must be at least the minimum size & spacing indicated on plan at the time of installation.
4. The projected plant growth depicted is based upon the general habit of the plant species with standard practices of care and maintenance.
5. Final planting design may vary based upon final engineering of berm and adjacent infrastructure.

# **EAST AIRFIELD LANDSCAPE BUFFERS**

## **BUFFER TYPE "E"**

Date: 6-15-2016



**PLAN  
(200' SECTION)**