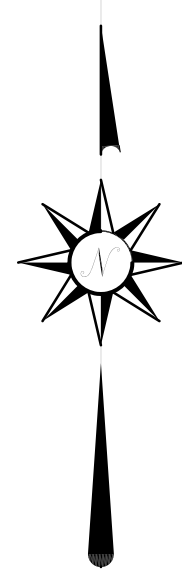


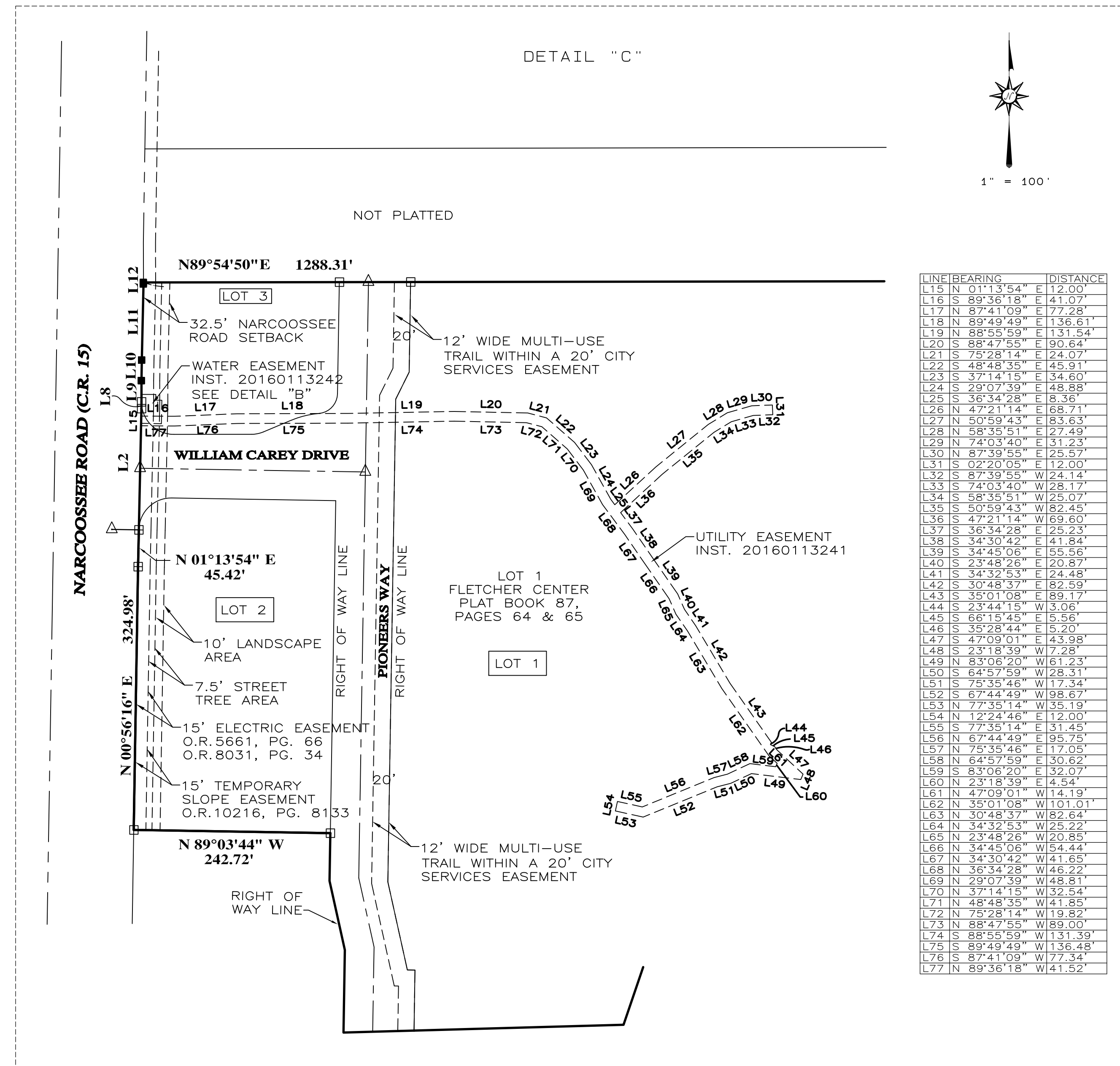
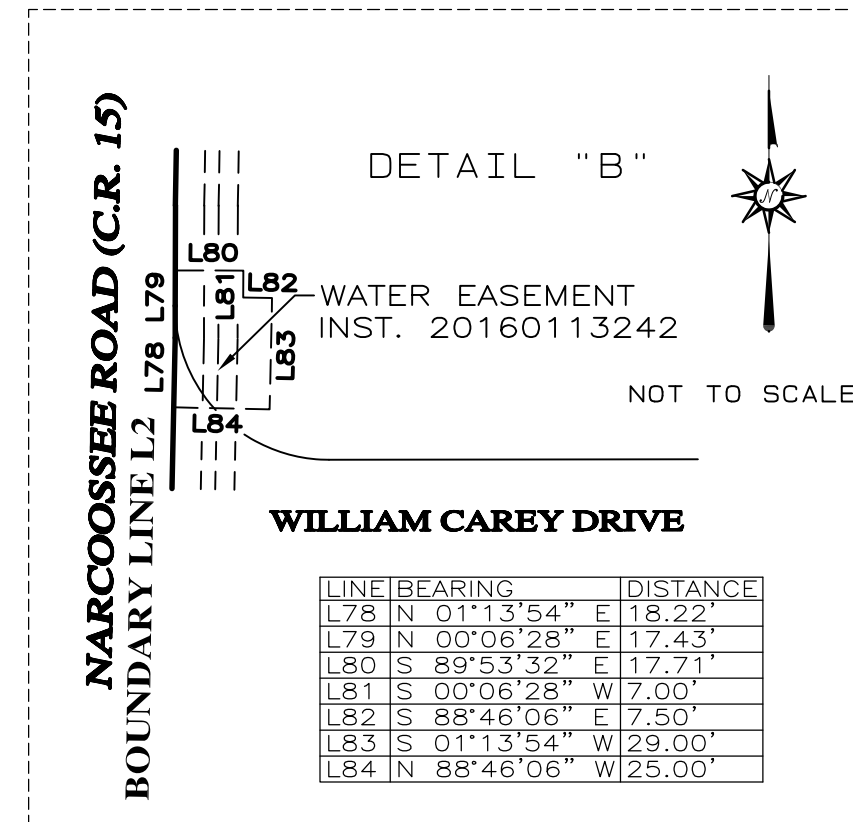
FLETCHER CENTRE II

A PORTION OF SECTION 20, TOWNSHIP 24 SOUTH, RANGE 31 EAST,
AND A REPLAT OF A PORTION OF FLETCHER CENTER, LOT 1
AS RECORDED IN PLAT BOOK 87, PAGES 64 AND 65,
CITY OF ORLANDO, ORANGE COUNTY, FLORIDA



LEGEND

- FOUND CONCRETE MONUMENT
LB 6846 PRM
- ▲ FOUND NAIL AND DISK
- SET IRON ROD AND CAP LB 6846
- ◻ NO MONUMENT SET FALLS IN WATER
INDICATES CHANGE IN DIRECTION
- ◻ SET CONCRETE MONUMENT
"PRM LELSI LB 6846"
- △ SET NAIL AND DISK
"PRM LELSI LB 6846"
- P.O.C. POINT OF COMMENCEMENT
- P.O.B. POINT OF BEGINNING
- O.R. OFFICIAL RECORDS BOOK
- D.B. DEED BOOK
- PG. PAGE
- T TOWNSHIP
- R RANGE
- CONC. MON. CONCRETE MONUMENT
- R/W RIGHT OF WAY
- CCR CERTIFIED CORNER RECORD
- PRC POINT OF REVERSE CURVATURE
- PC POINT OF CURVATURE
- PT POINT OF TANGENCY
- RAD RADIUS
- CA CENTRAL ANGLE
- CB CHORD BEARING
- CH CHORD
- A ARC
- FDOT FLORIDA DEPARTMENT OF TRANSPORTATION
- C.R. COUNTY ROAD
- LELSI LEADING EDGE LAND SERVICES, INC.
- PRM PERMANENT REFERENCE MONUMENT
- LB LICENSED BUSINESS
- PSM PROFESSIONAL SURVEYOR & MAPPER
- EL ELEVATION
- NAVD 88 NORTH AMERICAN VERTICAL DATUM OF 1988
- NAD NORTH AMERICAN DATUM
- NGS NATIONAL GEODETIC SURVEY
- NT NON TANGENT



LINE BEARING	DISTANCE
L15 N 01°13'54" E	12.00'
L16 S 89°36'18" E	41.07'
L17 N 87°41'09" E	77.28'
L18 N 89°49'49" E	136.61'
L19 N 88°55'59" E	131.54'
L20 S 88°47'55" E	90.64'
L21 S 75°28'17" E	24.07'
L22 S 48°48'35" E	45.91'
L23 S 37°14'15" E	34.60'
L24 S 29°07'39" E	48.88'
L25 S 36°34'28" E	8.36'
L26 N 47°21'14" E	68.71'
L27 N 50°59'43" E	83.63'
L28 S 58°35'51" E	27.49'
L29 N 74°03'40" E	31.23'
L30 N 87°39'55" E	25.57'
L31 S 02°20'05" E	12.00'
L32 S 87°39'55" W	24.74'
L33 S 74°03'40" W	28.17'
L34 S 58°35'51" W	25.07'
L35 S 50°59'43" W	82.45'
L36 S 47°21'14" W	69.60'
L37 S 36°34'28" W	25.23'
L38 S 34°30'42" E	41.84'
L39 S 34°30'08" E	55.56'
L40 S 23°48'26" E	20.87'
L41 S 34°32'53" E	24.48'
L42 S 30°48'37" E	82.59'
L43 S 35°01'08" E	89.17'
L44 S 23°44'15" W	3.06'
L45 S 66°15'45" E	5.56'
L46 S 35°28'44" E	5.20'
L47 S 47°09'01" E	43.98'
L48 S 23°18'39" W	7.28'
L49 N 83°06'20" W	61.23'
L50 S 64°57'59" W	28.31'
L51 S 75°35'46" W	17.34'
L52 S 67°44'49" W	98.67'
L53 N 77°35'14" W	35.19'
L54 N 129°44'46" E	112.00'
L55 S 77°35'14" E	31.45'
L56 N 67°44'49" E	95.75'
L57 N 75°35'46" E	17.05'
L58 N 64°57'59" E	30.62'
L59 S 83°06'20" E	32.07'
L60 N 23°18'39" E	4.54'
L61 N 47°09'01" W	14.19'
L62 N 35°01'08" W	101.01'
L63 N 30°48'37" W	82.64'
L64 N 34°32'53" W	25.22'
L65 N 23°48'26" W	20.88'
L66 N 34°45'06" W	54.44'
L67 N 34°30'42" W	41.65'
L68 N 36°34'28" W	45.22'
L69 N 29°07'39" W	48.51'
L70 N 37°14'15" W	32.54'
L71 N 48°48'35" W	41.85'
L72 N 75°28'17" W	119.82'
L73 N 88°47'55" W	89.00'
L74 S 88°55'59" W	131.39'
L75 S 89°49'49" W	136.48'
L76 S 87°41'09" W	77.24'
L77 N 89°36'18" W	41.52'

NOTICE: THIS PLAT, AS RECORDED IN ITS GRAPHIC FORM IS THE OFFICIAL DEPICTION OF THE SUBDIVIDED LANDS DESCRIBED HEREON AND WILL IN NO CIRCUMSTANCES BE SUPPLANTED IN AUTHORITY BY ANY OTHER GRAPHIC OR DIGITAL FORM OF THE PLAT. THERE MAY BE ADDITIONAL RESTRICTIONS THAT ARE NOT RECORDED ON THIS PLAT THAT MAY BE FOUND IN THE PUBLIC RECORDS OF THIS COUNTY.

LEADING EDGE LAND SERVICES
INCORPORATED
8802 EXCHANGE DRIVE
ORLANDO, FLORIDA 32809
PHONE: (407) 351-6730
FAX: (407) 351-9691
FLORIDA LICENSED BUSINESS NUMBER LB 6846