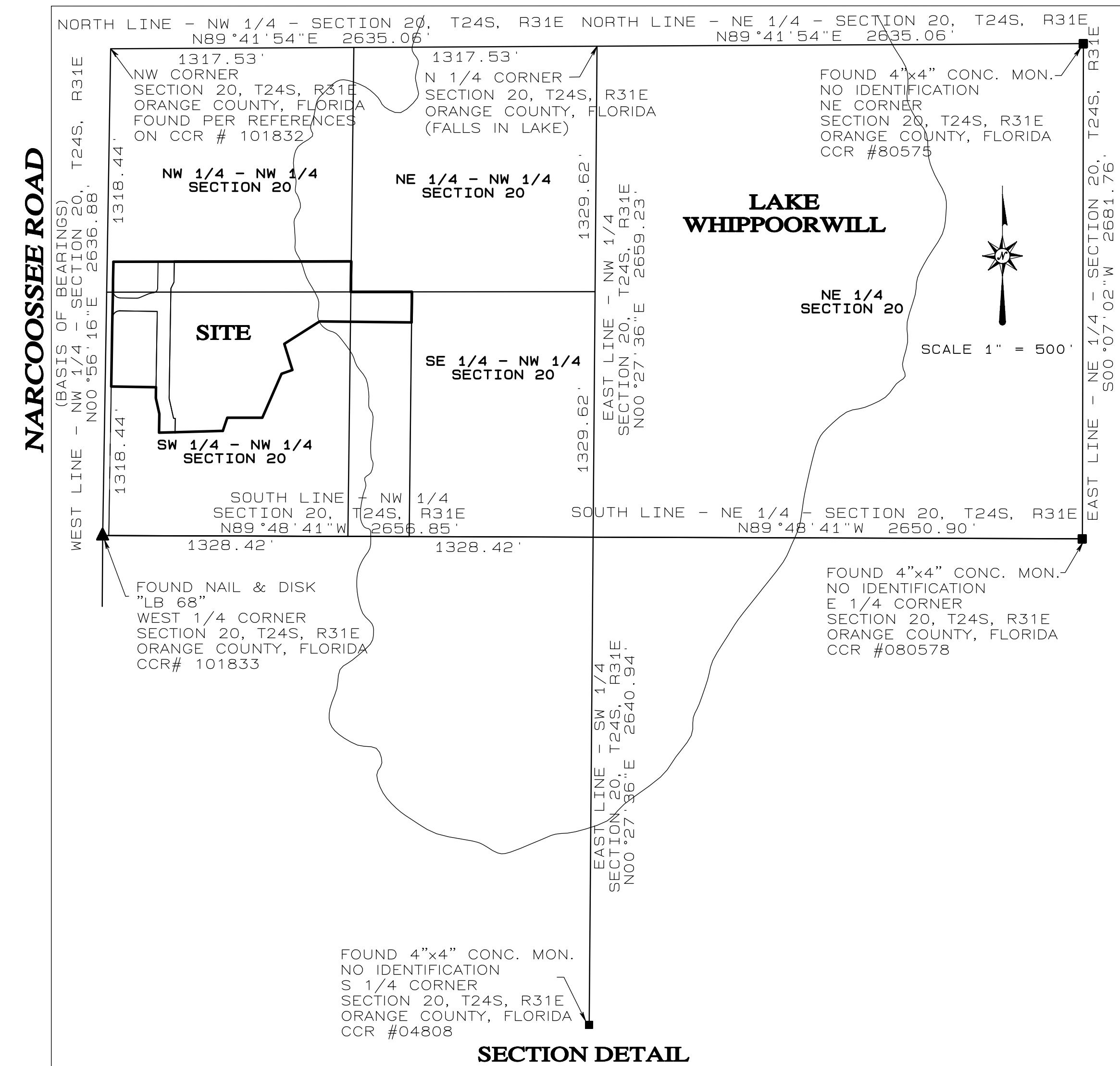


FLETCHER CENTRE II

A PORTION OF SECTION 20, TOWNSHIP 24 SOUTH, RANGE 31 EAST,
AND A REPLAT OF A PORTION OF FLETCHER CENTER, LOT 1
AS RECORDED IN PLAT BOOK 87, PAGES 64 AND 65,
CITY OF ORLANDO, ORANGE COUNTY, FLORIDA



**LEADING EDGE
LAND SERVICES**
INCORPORATED
8802 EXCHANGE DRIVE
ORLANDO, FLORIDA 32809
PHONE: (407) 351-6730
FAX: (407) 351-9691
FLORIDA LICENSED BUSINESS NUMBER LB 6846

NOTICE: THIS PLAT, AS RECORDED IN ITS GRAPHIC FORM IS THE OFFICIAL DEPICTION OF THE SUBDIVIDED LANDS DESCRIBED HEREON AND WILL IN NO CIRCUMSTANCES BE SUPPLANTED IN AUTHORITY BY ANY OTHER GRAPHIC OR DIGITAL FORM OF THE PLAT. THERE MAY BE ADDITIONAL RESTRICTIONS THAT ARE NOT RECORDED ON THIS PLAT THAT MAY BE FOUND IN THE PUBLIC RECORDS OF THIS COUNTY.