

7-11 EAST PARK

SECTION 5, TOWNSHIP 24 SOUTH, RANGE 31 EAST,
CITY OF ORLANDO, ORANGE COUNTY, FLORIDA

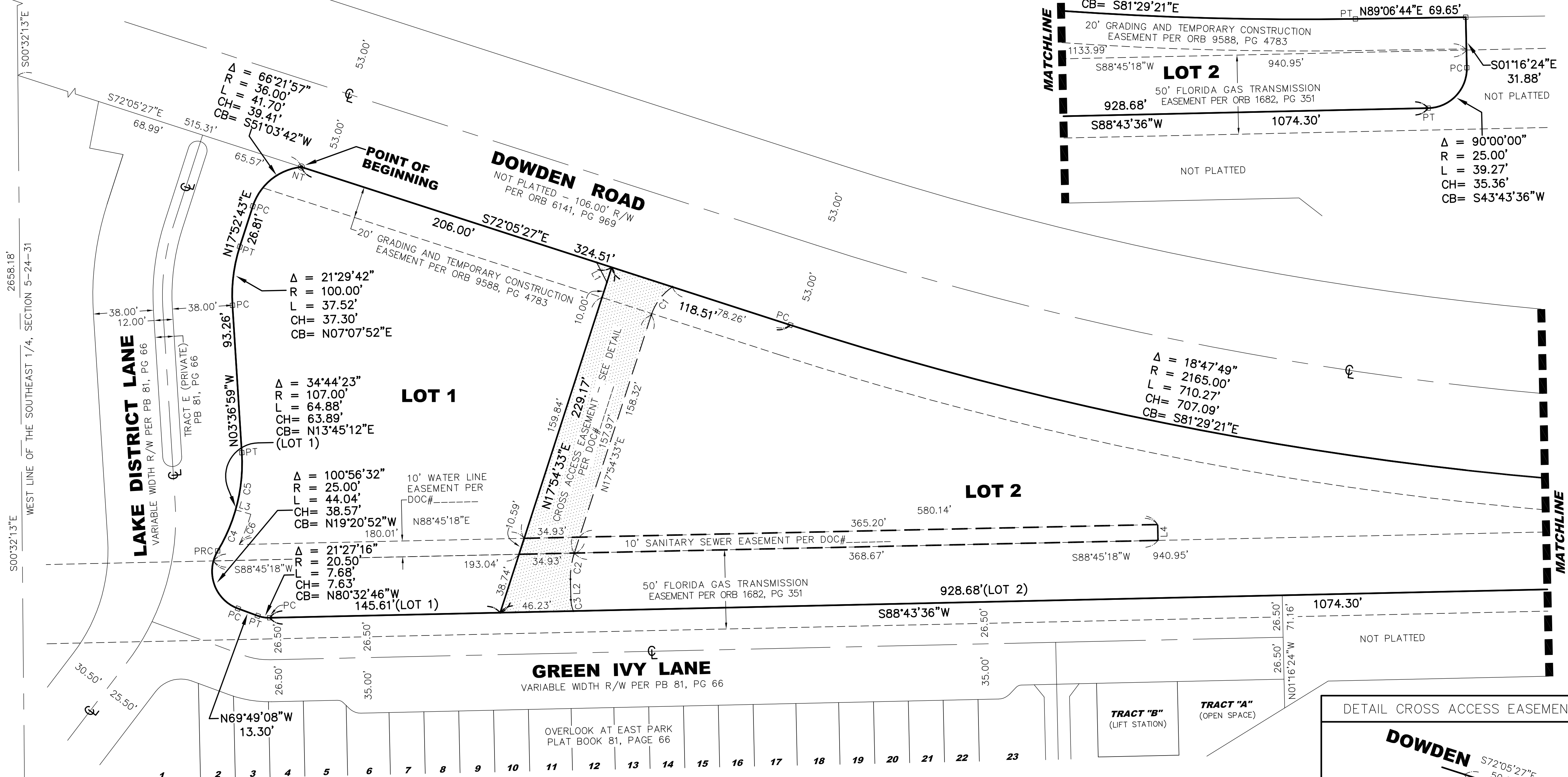
SHEET 2 OF 2

PLAT
BOOK

PAGE

POINT OF COMMENCEMENT
NW CORNER OF THE SE 1/4, SECTION
5-24-31, NO CORNER RECOVERED

N89°57'26"E 2614.15'
NORTH LINE OF THE SOUTHEAST 1/4, SECTION 5-24-31
NE CORNER OF THE SE 1/4,
SECTION 5-24-31
CCR #094112, RECOVERED
6"x6" CM, NO IDENTIFICATION



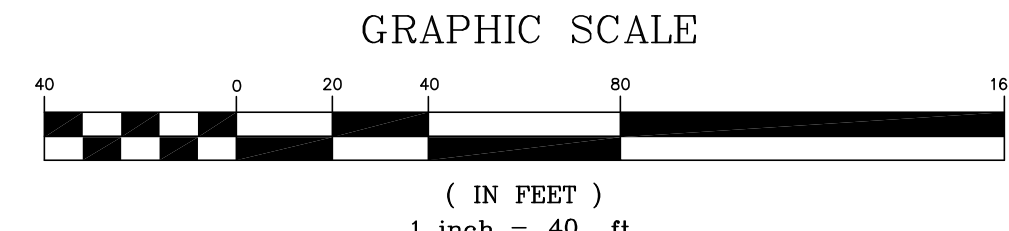
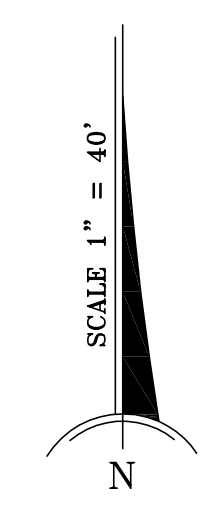
SOUTHWEST CORNER
SOUTHEAST 1/4, SECTION 5-24-31
CCR #094115
RECOVERED 4"x4" CONCRETE MONUMENT
NO IDENTIFICATION

LINE	BEARING	LENGTH
L1	N27°05'27"W	14.14'
L2	S01°16'24"E	12.99'
L3	N74°03'31"W	10.00'
L4	N01°14'42"W	10.00'

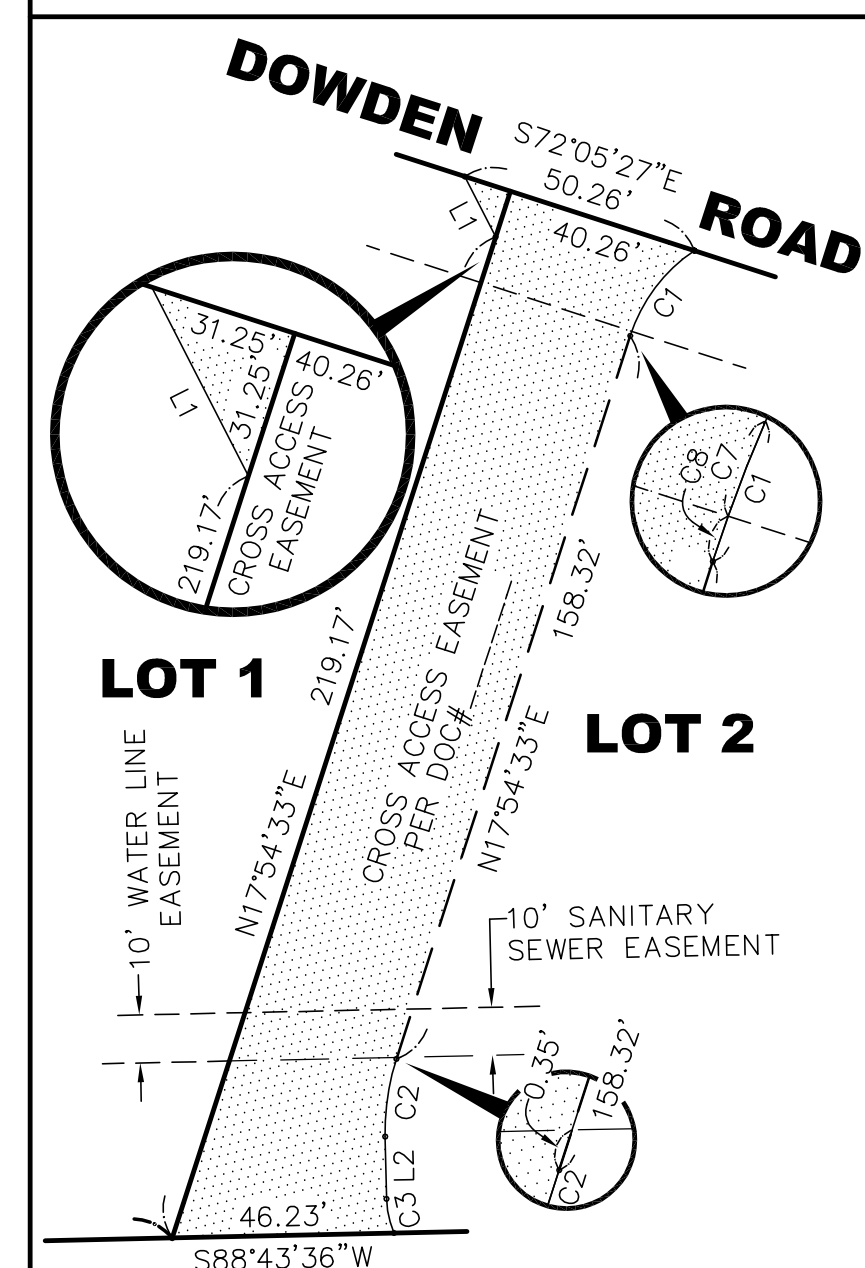
CURVE	RADIUS	DELTA	LENGTH	CH BEARING	CHORD
C1	34.00'	38°08'06"	22.63'	S36°58'36"W	22.21'
C2	49.00'	19°10'57"	16.41'	S08°19'05"W	16.33'
C3	19.00'	22°06'26"	7.33'	S12°19'37"E	7.29'
C4	107.00'	15°10'54"	28.35'	N23°31'56"E	28.27'
C5	107.00'	19°33'28"	36.52'	N06°09'45"E	36.35'
C6	117.00'	10°02'54"	20.52'	N20°57'56"E	20.49'
C7	34.00'	36°27'26"	21.63'	S37°48'57"W	21.27'
C8	34.00'	01°40'41"	1.00'	S18°44'54"W	1.00'

LEGEND:

- - RECOVERED 4"x4" CM PRM #4671, UNLESS OTHERWISE NOTED
- - SET PERMANENT CONTROL POINT, NAIL & DISK #4671
- ⊙ - INDICATES CENTERLINE
- # - NUMBER
- Δ - DELTA
- CB - CHORD BEARING
- CCR - CERTIFIED CORNER RECORD
- CH - CHORD LENGTH
- L - ARC LENGTH
- LB - LICENSED BUSINESS CERTIFICATION
- NE - NORTHEAST
- NT - NON-TANGENT
- NW - NORTHWEST
- ORB - OFFICIAL RECORDS BOOK
- PC - POINT OF CURVATURE
- PB - PLAT BOOK
- PG - PAGE
- PRC - POINT OF REVERSE CURVATURE
- PRM - PERMANENT REFERENCE MONUMENT
- PT - POINT OF TANGENCY
- R - RADIUS
- R/W - RIGHT-OF-WAY
- SE - SOUTHEAST
- SW - SOUTHWEST



DETAIL CROSS ACCESS EASEMENT



SHANNON SURVEYING, INC.
499 NORTH S.R. 434 - SUITE 2045
ALTA MONTE SPRINGS, FLORIDA, 32714
(407) 774-8372 LB # 6898