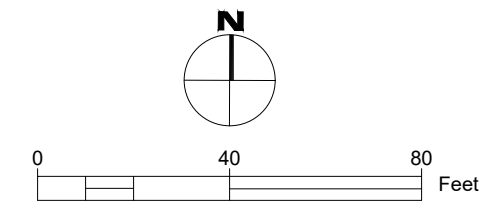
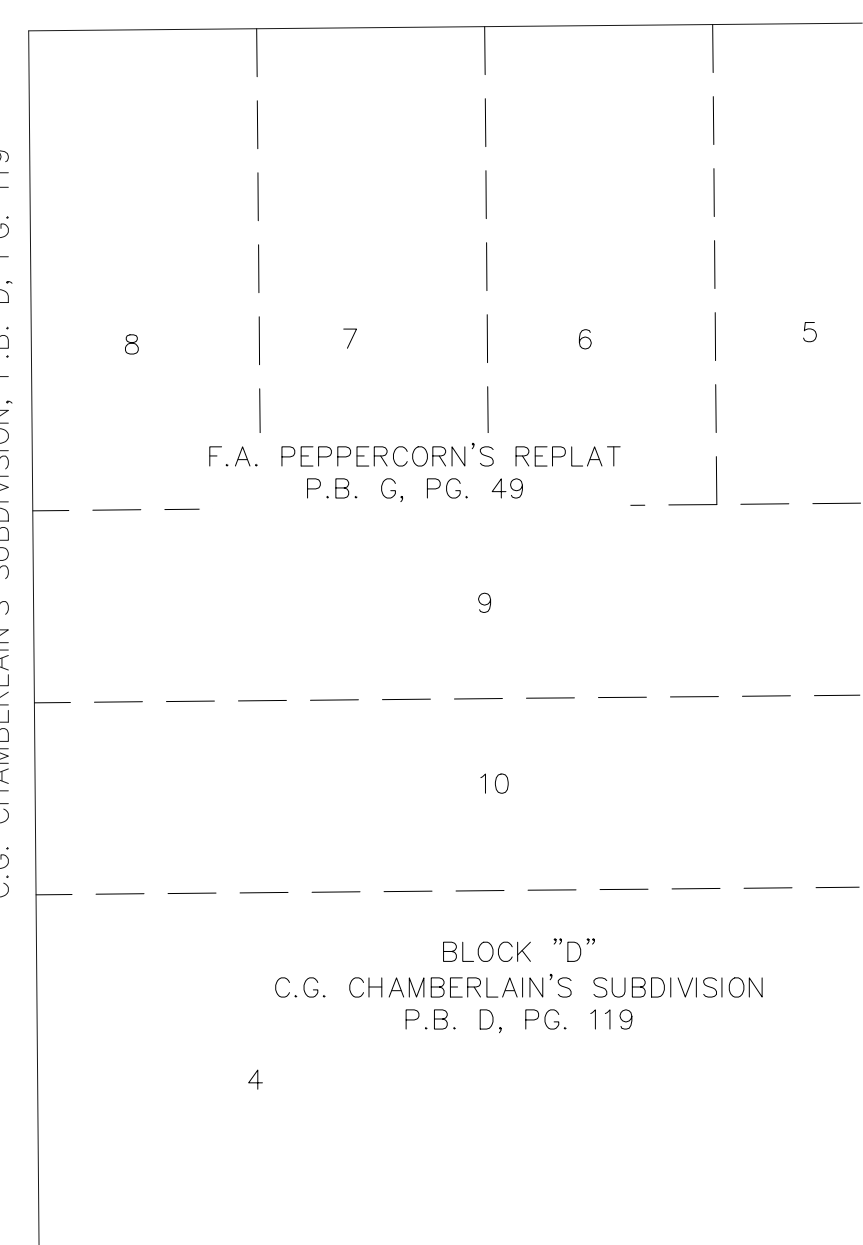
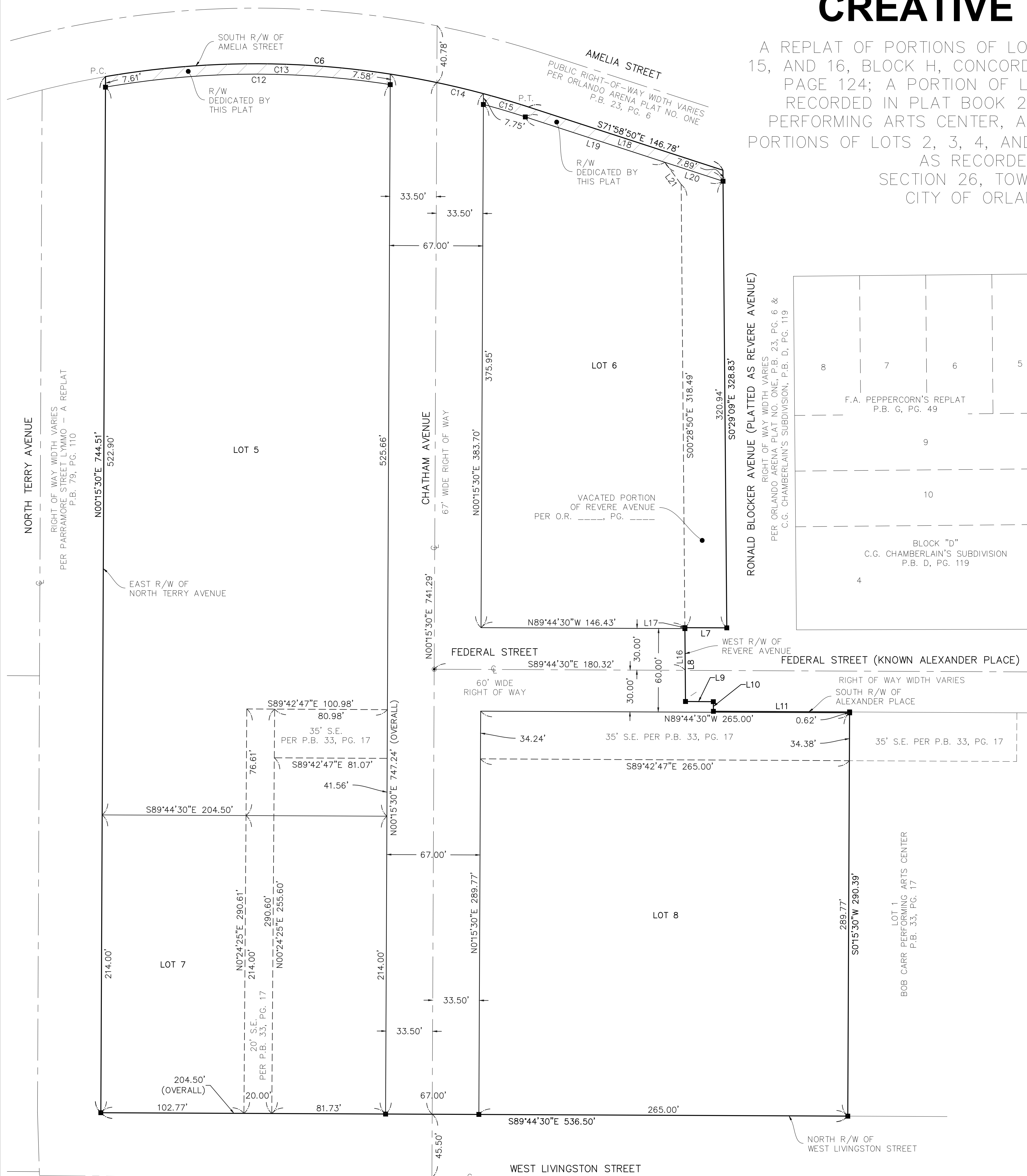


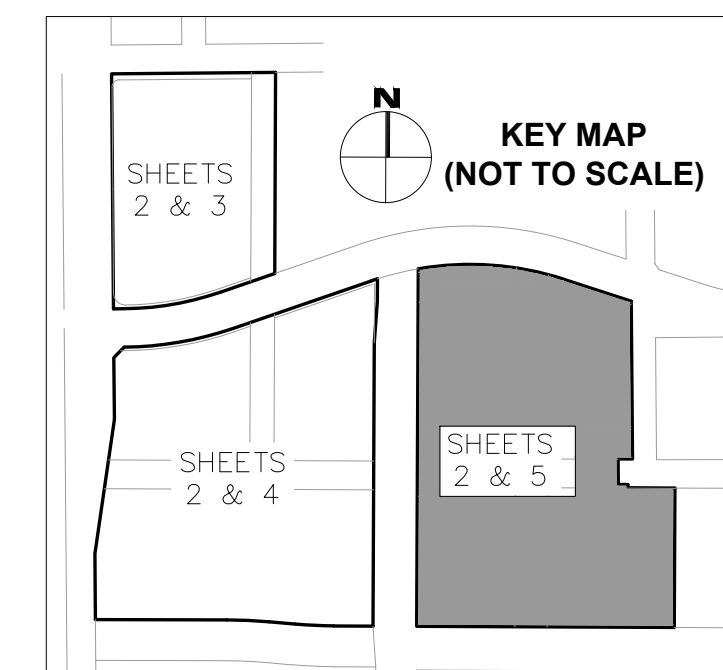
CREATIVE VILLAGE - PHASE 1

A REPLAT OF PORTIONS OF LOTS 1, 2, 3, 4, 5, 6, 7, 8, 9, 10, 11, 12, 13, 14, 15, AND 16, BLOCK H, CONCORD PARK RE-SUB, AS RECORDED IN PLAT BOOK D, PAGE 124; A PORTION OF LOT ONE, ORLANDO ARENA PLAT NO. ONE, AS RECORDED IN PLAT BOOK 23, PAGE 6; A PORTION OF LOT 1, BOB CARR PERFORMING ARTS CENTER, AS RECORDED IN PLAT BOOK 33, PAGE 17; AND PORTIONS OF LOTS 2, 3, 4, AND 5, BLOCK F, C. G. CHAMBERLAIN'S SUBDIVISION, AS RECORDED IN PLAT BOOK D, PAGE 119 SECTION 26, TOWNSHIP 22 SOUTH, RANGE 29 EAST CITY OF ORLANDO, ORANGE COUNTY, FLORIDA



LINE TABLE		
LINE NO.	BEARING	LENGTH
L7	S89°42'47"E	30.12'
L8	S00°28'50"E	53.05'
L9	S89°36'51"E	20.00'
L10	S00°28'50"E	6.92'
L11	S89°42'47"E	97.80'
L16	S00°28'50"E	52.36'
L17	S00°28'50"E	0.69'
L18	S71°59'10"E	149.35'
L19	S71°59'10"E	105.51'
L20	S71°59'10"E	43.83'
L21	S36°13'50"E	19.65'

CURVE TABLE					
CURVE NO.	RADIUS	LENGTH	DELTA	CHORD BEARING	CHORD
C6	634.00'	307.69'	27°48'22"	S85°53'01"E	304.68'
C12	626.50'	205.44'	18°47'17"	S89°29'09"W	204.52'
C13	634.00'	205.42'	18°33'50"	S89°29'43"W	204.52'
C14	634.00'	68.43'	6°11'04"	N78°07'50"W	68.40'
C15	634.00'	33.84'	3°03'29"	N73°30'34"W	33.83'



SHEET INDEX:
 SHEET 1 OF 5 - LEGAL DESCRIPTION, DEDICATION, NOTES, AND LEGEND
 SHEET 2 OF 5 - BOUNDARY GEOMETRY
 SHEETS 3 TO 5 OF 5 - LOT AND RIGHT OF WAY GEOMETRY

