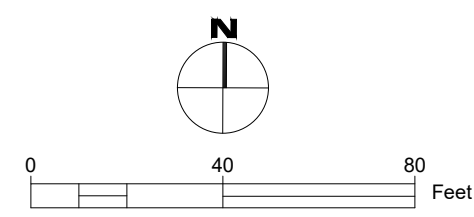


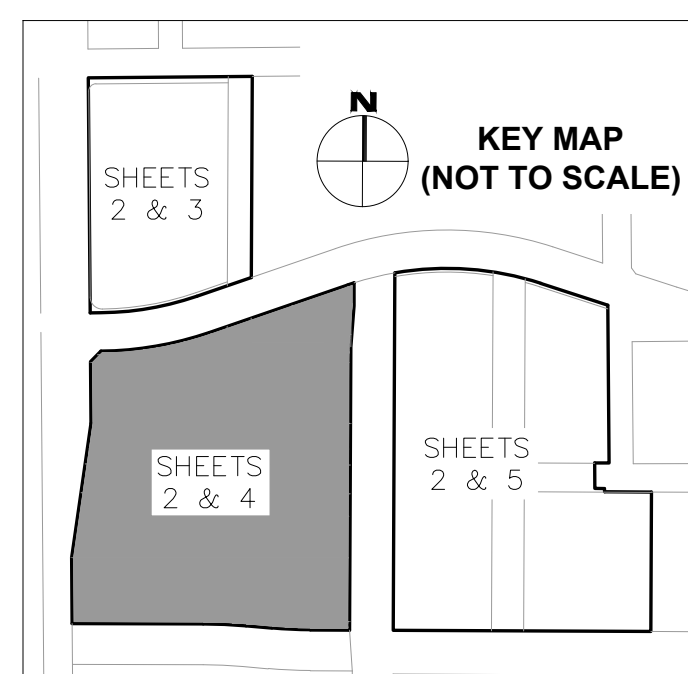
CREATIVE VILLAGE - PHASE 1

A REPLAT OF PORTIONS OF LOTS 1, 2, 3, 4, 5, 6, 7, 8, 9, 10, 11, 12, 13, 14, 15, AND 16, BLOCK H, CONCORD PARK RE-SUB, AS RECORDED IN PLAT BOOK D, PAGE 124; A PORTION OF LOT ONE, ORLANDO ARENA PLAT NO. ONE, AS RECORDED IN PLAT BOOK 23, PAGE 6; A PORTION OF LOT 1, BOB CARR PERFORMING ARTS CENTER, AS RECORDED IN PLAT BOOK 33, PAGE 17; AND PORTIONS OF LOTS 2, 3, 4, AND 5, BLOCK F, C. G. CHAMBERLAIN'S SUBDIVISION, AS RECORDED IN PLAT BOOK D, PAGE 119 SECTION 26, TOWNSHIP 22 SOUTH, RANGE 29 EAST CITY OF ORLANDO, ORANGE COUNTY, FLORIDA



LINE NO.	BEARING	LENGTH
L2	N00°15'30"E	47.90'
L3	S04°17'20"W	85.36'
L4	N89°44'32"W	81.72'
L5	N84°56'24"W	54.03'
L6	N44°30'43"E	30.86'
L12	S89°30'35"W	7.45'
L13	S71°01'30"W	36.39'
L14	N44°30'43"E	20.35'
L15	N44°30'43"E	10.51'

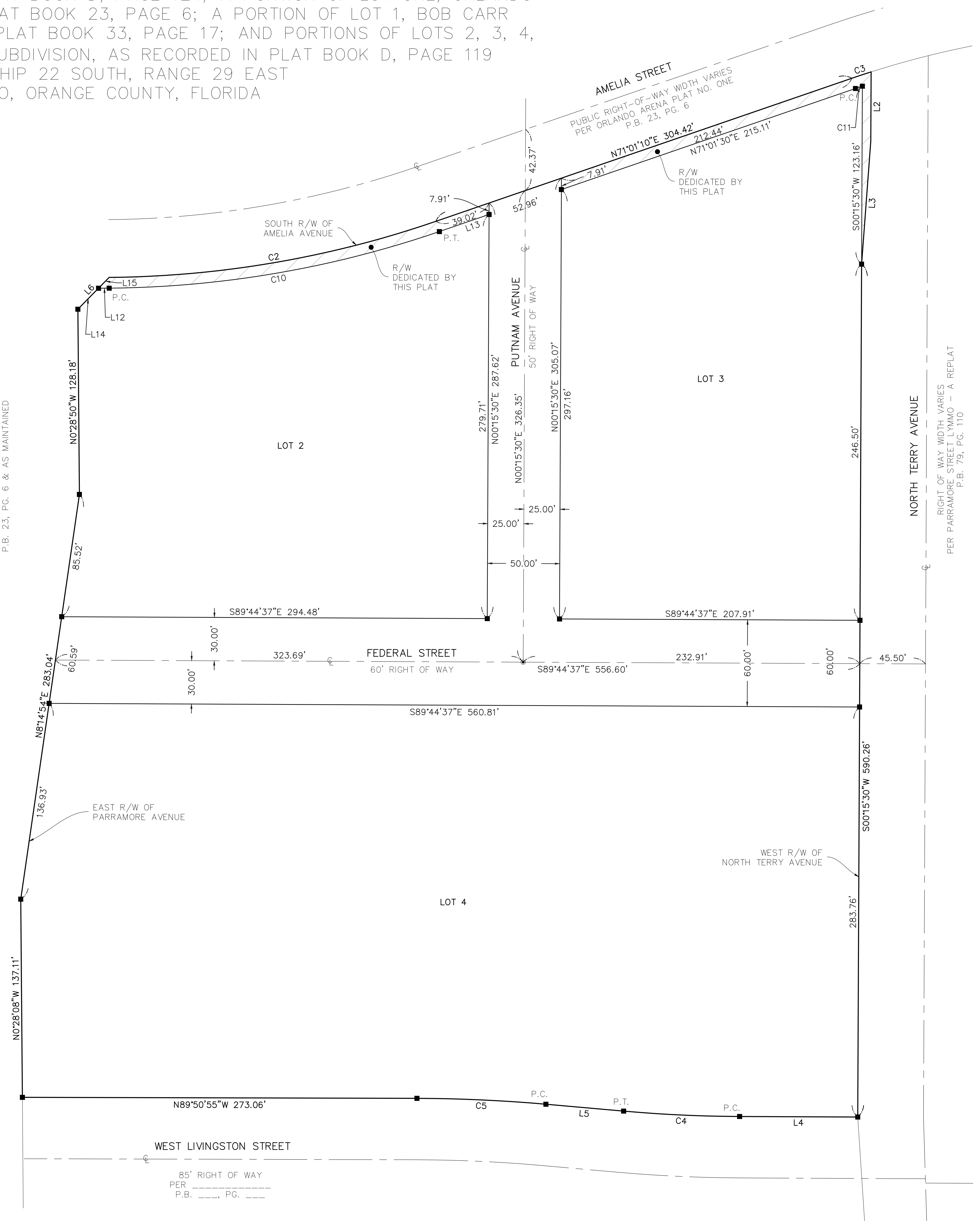
CURVE NO.	RADIUS	LENGTH	DELTA	CHORD BEARING	CHORD
C2	714.00'	230.35'	18°29'05"	N80°15'41"E	229.35'
C3	634.00'	14.06'	1°16'16"	N71°39'18"E	14.06'
C4	957.50'	80.37'	4°48'34"	N87°20'38"W	80.35'
C5	1042.50'	89.32'	4°54'32"	N87°23'39"W	89.29'
C10	721.50'	232.77'	18°29'05"	N80°16'02"E	231.76'
C11	626.50'	5.08'	0°27'51"	S71°15'26"W	5.08'



SHEET INDEX:
 SHEET 1 OF 5 - LEGAL DESCRIPTION, DEDICATION, NOTES, AND LEGEND
 SHEET 2 OF 5 - BOUNDARY GEOMETRY
 SHEETS 3 TO 5 OF 5 - LOT AND RIGHT OF WAY GEOMETRY



NORTH PARRAMORE AVENUE
 RIGHT OF WAY WIDTH VARIES
 PER ORLANDO ARENA PLAT NO. ONE
 P.B. 23, PG. 6 & AS MAINTAINED



NORTH TERRY AVENUE
 RIGHT OF WAY WIDTH VARIES
 PER PARRAMORE STREET LYMMO - A REPLAT
 P.B. 79, PG. 110