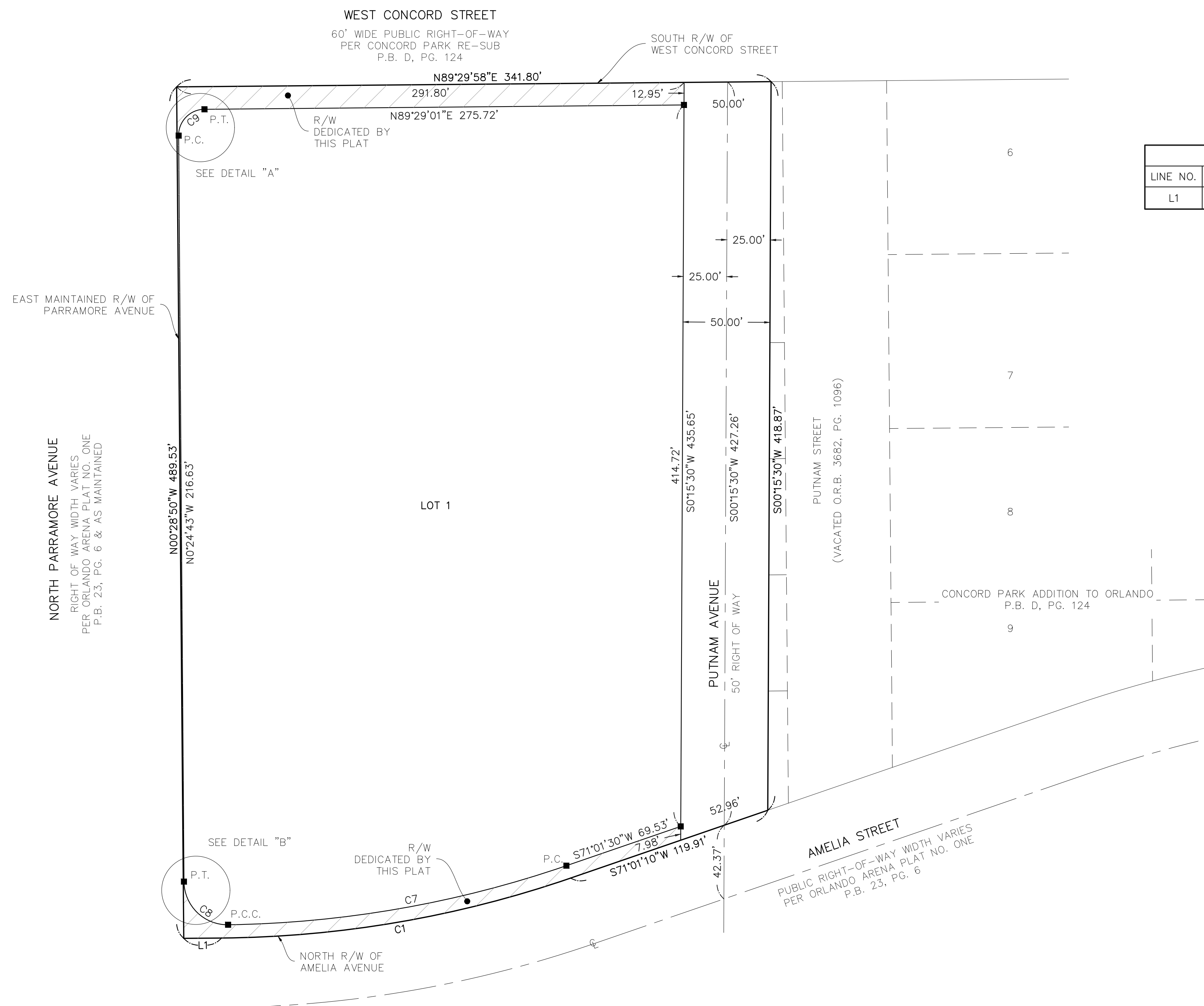
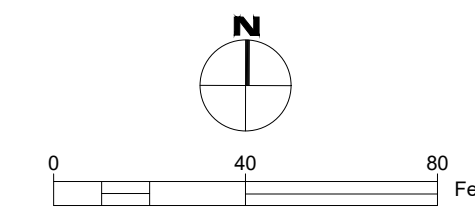
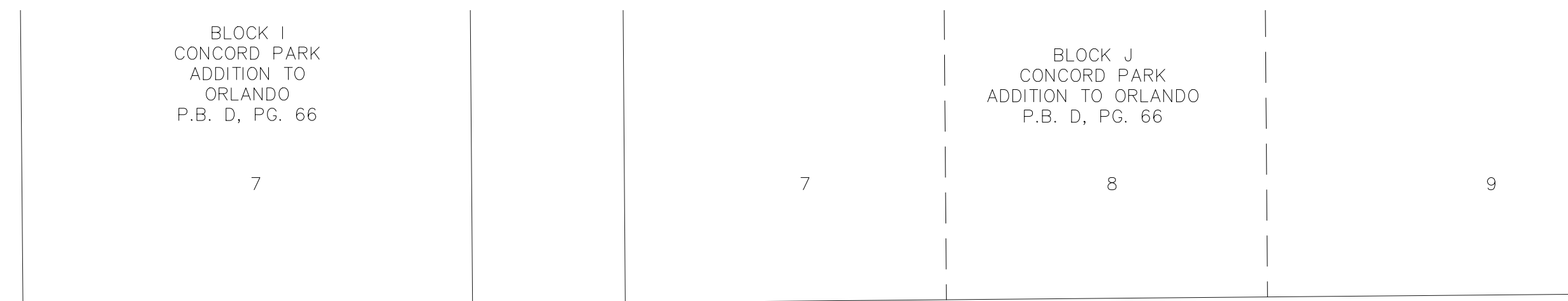


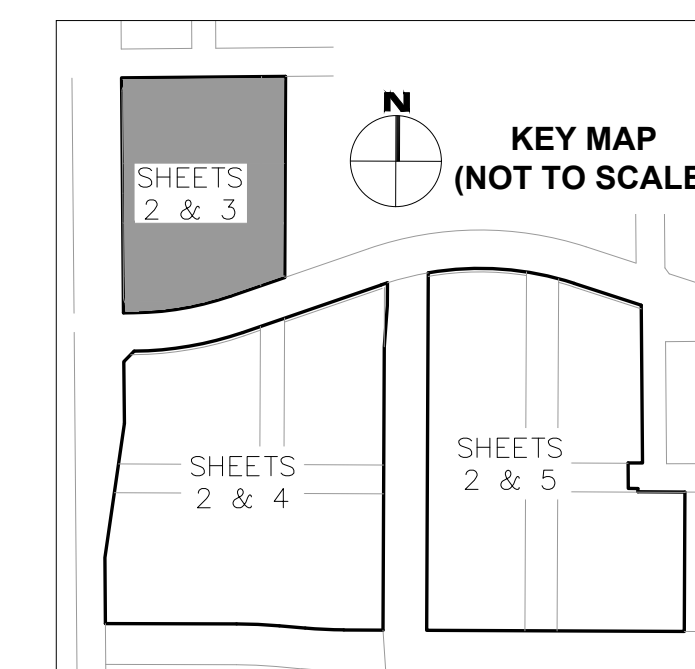
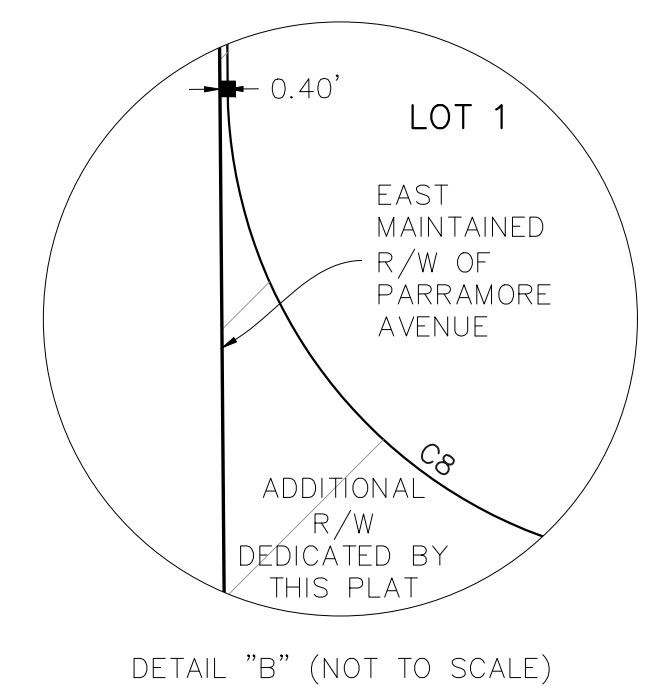
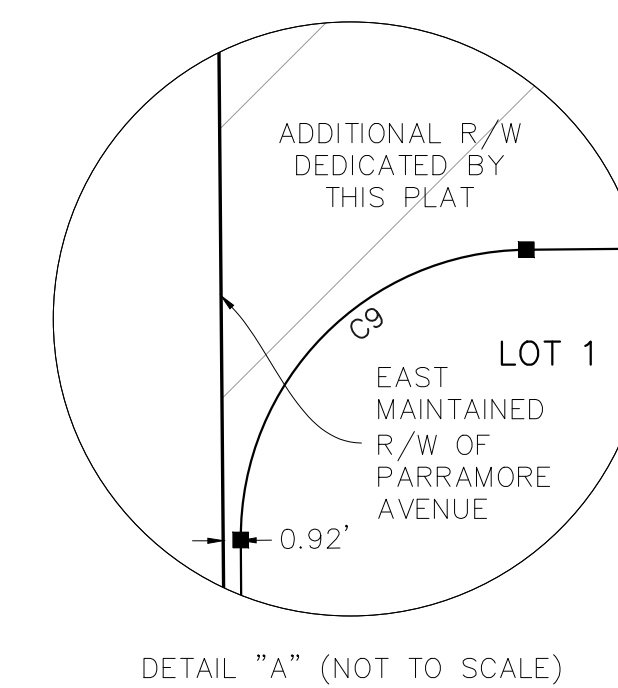
# CREATIVE VILLAGE - PHASE 1

A REPLAT OF PORTIONS OF LOTS 1, 2, 3, 4, 5, 6, 7, 8, 9, 10, 11, 12, 13, 14, 15, AND 16, BLOCK H, CONCORD PARK RE-SUB, AS RECORDED IN PLAT BOOK D, PAGE 124; A PORTION OF LOT ONE, ORLANDO ARENA PLAT NO. ONE, AS RECORDED IN PLAT BOOK 23, PAGE 6; A PORTION OF LOT 1, BOB CARR PERFORMING ARTS CENTER, AS RECORDED IN PLAT BOOK 33, PAGE 17; AND PORTIONS OF LOTS 2, 3, 4, AND 5, BLOCK F, C. G. CHAMBERLAIN'S SUBDIVISION, AS RECORDED IN PLAT BOOK D, PAGE 119 SECTION 26, TOWNSHIP 22 SOUTH, RANGE 29 EAST CITY OF ORLANDO, ORANGE COUNTY, FLORIDA



LINE TABLE		
LINE NO.	BEARING	LENGTH
L1	N89°30'16"E	21.69'

CURVE TABLE					
CURVE NO.	RADIUS	LENGTH	DELTA	CHORD BEARING	CHORD
C1	634.00'	204.54'	18°29'05"	S80°15'44"W	203.65'
C7	626.50'	198.28'	18°07'59"	N80°05'29"E	197.45'
C8	25.00'	39.46'	90°25'48"	S45°37'37"E	35.49'
C9	15.00'	23.53'	89°53'44"	S44°32'09"W	21.19'



SHEET INDEX:  
SHEET 1 OF 5 - LEGAL DESCRIPTION, DEDICATION, NOTES, AND LEGEND  
SHEET 2 OF 5 - BOUNDARY GEOMETRY  
SHEETS 3 TO 5 OF 5 - LOT AND RIGHT OF WAY GEOMETRY

