

UNIVERSAL CITY FLORIDA LOT 2A SECOND REPLAT

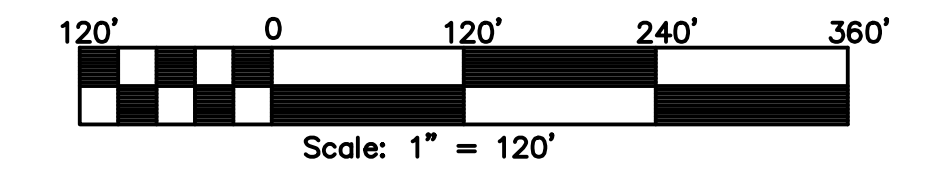
A REPLAT OF LOT D1 AND LOT D2,
UNIVERSAL CITY FLORIDA LOT 2A REPLAT, PLAT BOOK 84, PAGES 6 AND 7
LOCATED IN SECTIONS 24 AND 25, TOWNSHIP 23 SOUTH, RANGE 28 EAST
CITY OF ORLANDO, ORANGE COUNTY, FLORIDA

PLAT
BOOK

PAGE

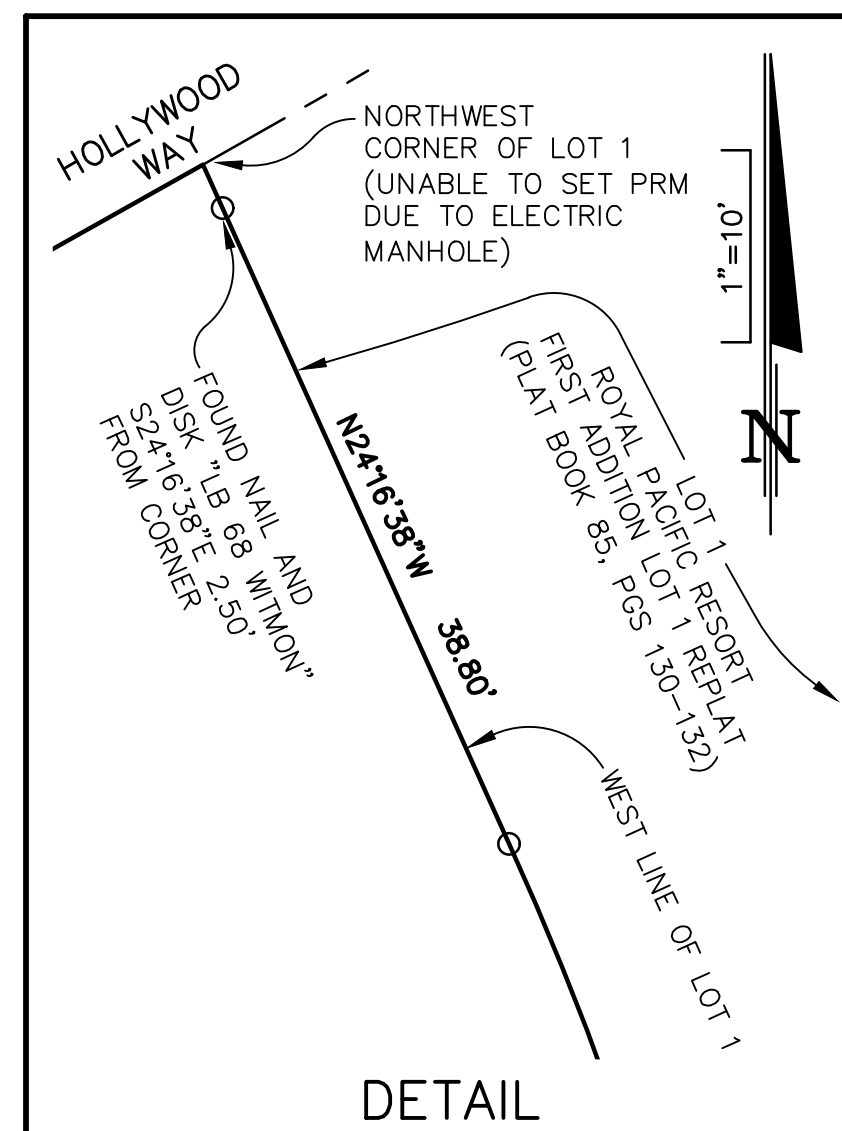
SHEET 2 OF 2

SEE SHEET 1 FOR NOTES



LINE TABLE		
NUMBER	BEARING	DISTANCE
L1	N87°22'29"E	29.35'
L2	N19°35'54"W	94.03'
L3	N15°30'09"W	15.00'
L4	N23°53'49"W	15.00'
L5	N28°23'05"W	35.00'

CURVE TABLE					
NUMBER	RADIUS	DELTA	LENGTH	CHORD	CHORD BEARING
C1	65.00'	106°58'23"	121.36'	104.48'	N33°53'17"E
C2	2145.00'	7°07'34"	266.78'	266.61'	N78°03'38"E
C3	2130.00'	8°23'40"	312.07'	311.79'	N70°18'01"E
C4	2115.00'	4°29'16"	165.66'	165.62'	N63°51'33"E
C5	2080.00'	20°35'37"	747.60'	743.59'	N71°54'44"E
C6	2080.00'	1°04'29"	39.02'	39.02'	N61°04'41"E



LEGEND

(FOR ALL SHEETS)

- C1 = CURVE NUMBER (SEE CURVE TABLE)
- L1 = LINE NUMBER (SEE LINE TABLE)
- Δ = CENTRAL ANGLE
- R = RADIUS
- L = ARC LENGTH
- CB = CHORD BEARING
- CH = CHORD DISTANCE
- CL = CENTERLINE
- FND = FOUND
- R/W = RIGHT-OF-WAY
- NT = NON-TANGENT
- (R) = RADIAL
- (NR) = NON-RADIAL
- ORC = ORLANDO UTILITIES COMMISSION
- PT = POINT OF TANGENCY
- PC = POINT OF CURVATURE
- P-C = POINT OF CUSP
- PCC = POINT OF COMPOUND CURVATURE
- PCP = PERMANENT CONTROL POINT
- PRC = POINT OF REVERSE CURVATURE
- ORB = OFFICIAL RECORD BOOK
- PB = PLAT BOOK
- PG(S) = PAGE(S)
- PRM = PERMANENT REFERENCE MONUMENT
- CM = CONCRETE MONUMENT
- LB = LICENSED BUSINESS
- LS = LICENSED SURVEYOR
- PLS = PROFESSIONAL LAND SURVEYOR
- PSM = PROFESSIONAL SURVEYOR AND MAPPER
- CCR = CERTIFIED CORNER RECORD
- N&D = NAIL AND DISK
- IRC = IRON ROD AND CAP
- FDOT = FLORIDA DEPARTMENT OF TRANSPORTATION
- DOC# = OFFICIAL RECORDS DOCUMENT NUMBER OF THE PUBLIC RECORDS OF ORANGE COUNTY, FLORIDA.

SECTION 24-23-28 = SECTION 24, TOWNSHIP 23 SOUTH, RANGE 28 EAST

- = DENOTES PERMANENT REFERENCE MONUMENT (SET 4"x4" CONCRETE MONUMENT WITH DISK STAMPED "PRM LB 68" UNLESS OTHERWISE NOTED) PER CHAPTER 177, FLORIDA STATUTES.
- = DENOTES PERMANENT REFERENCE MONUMENT (SET NAIL & DISK STAMPED "PRM LB 68" UNLESS OTHERWISE NOTED)

NOTICE: THIS PLAT, AS RECORDED IN ITS GRAPHIC FORM, IS THE OFFICIAL DEPICTION OF THE SUBDIVIDED LANDS DESCRIBED HEREIN AND WILL IN NO CIRCUMSTANCES BE SUPPLANTED IN AUTHORITY BY ANY OTHER GRAPHIC OR DIGITAL FORM OF THE PLAT. THERE MAY BE ADDITIONAL RESTRICTIONS THAT ARE NOT RECORDED ON THIS PLAT THAT MAY BE FOUND IN THE PUBLIC RECORDS OF THIS COUNTY.

PREPARED BY:



DONALD W. MCINTOSH ASSOCIATES, INC.
ENGINEERS PLANNERS SURVEYORS
2200 PARK AVENUE NORTH, WINTER PARK, FLORIDA 32789 (407) 644-4068
CERTIFICATE OF AUTHORIZATION NUMBER LB68