

# STOREY PARK ROADWAYS

## A portion of Sections 3, 4 and 9, Township 24 South, Range 31 East

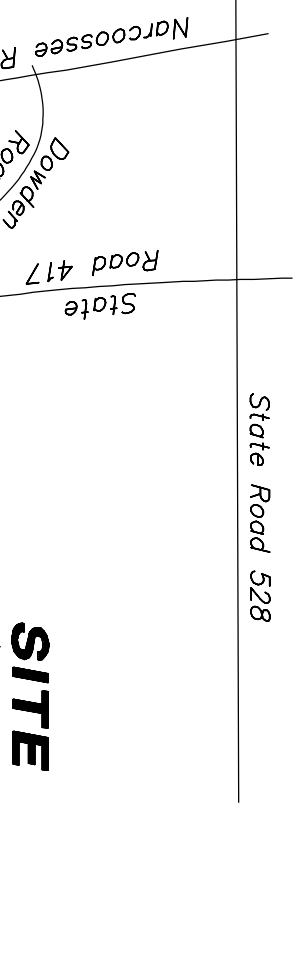
### City of Orlando, Orange County, Florida

#### Legal Description

A portion of Sections 3, 4 and 9, Township 24 South, Range 31 East, Orange County, Florida, being described as follows:

BEGIN at the southeast corner of Tract J-2, STOREY PARK – PHASE 2, according to the plat thereof, as recorded in Plat Book 88, Pages 37 through 48, Public Records of Orange County, Florida; said point being a point on a curve, concave northwesterly, having a radius of 1512.50 feet; thence, on a chord bearing of N 68°37'46" E and a chord distance of 645.28 feet, run northeasterly, along the arc of said curve, a distance of 650.28 feet, through a central angle of 24°38'01" to a point; thence run S 33°41'14" E, a distance of 125.00 feet to a point on a non-tangent curve, concave northwesterly, having a radius of 1637.50 feet; thence, on a chord bearing of S 57°36'54" W and a chord distance of 74.42 feet, run southwesterly, along the arc of said curve, a distance of 74.43 feet, through a central angle of 02°36'15" to a point of reverse curvature of a curve, having a radius of 25.00 feet and a central angle of 87°25'30"; thence run southerly, along the arc of said curve, a distance of 38.15 feet to the point of tangency thereof; thence run S 28°30'29" E, a distance of 24.28 feet to a point of curvature of a curve, concave westerly, having a radius of 449.75 feet and a central angle of 26°33'34"; thence run southerly, along the arc of said curve, a distance of 38.15 feet to the point of tangency thereof; thence run S 28°30'29" E, a distance of 208.48 feet to the point of tangency thereof; thence run S 01°56'55" E, a distance of 129.11 feet to a point of curvature of a curve, concave easterly, having a radius of 350.25 feet and a central angle of 18°48'47"; thence run southerly, along the arc of said curve, a distance of 115.00 feet to a point; thence run S 12°08'51" E, a distance of 50.39 feet to a point on a non-tangent curve, concave northwesterly, having a radius of 361.25 feet; thence, on a chord bearing of S 44°05'21" E and a chord distance of 191.86 feet, run southeasterly along the arc of said curve, a distance of 194.19 feet, through a central angle of 30°48'00" to the point of tangency thereof; thence run S 59°29'21" E, a distance of 394.66 feet to a point on a non-tangent curve, concave southwesterly, having a radius of 442.44 feet; thence, on a chord bearing of S 31°4'43" E and a chord distance of 430.67 feet, run southwesterly, along the arc of said curve, a distance of 449.79 feet, through a central angle of 58°14'49" to a point; thence run S 01°15'28" E, a distance of 422.31 feet to a point of curvature of a curve, concave northwesterly, having a radius of 25.00 feet and a central angle of 86°29'10"; thence run southeasterly, along the arc of said curve, a distance of 37.74 feet to a point of reverse curvature of a curve, having a radius of 1137.50 feet and a central angle of 02°01'48"; thence run easterly, along the arc of said curve, a distance of 40.30 feet to a point; thence run S 04°03'57" W, a distance of 125.00 feet to a point of curvature of a non-tangent curve, concave southwesterly, having a radius of 1012.50 feet; thence, on a chord bearing of N 85°45'53" W and a chord distance of 2.75 feet, run westerly, along the arc of said curve, a distance of 2.75 feet, through a central angle of 00°09'20" to a point of compound curvature of a curve, having a radius of 50.00 feet and a central angle of 95°28'38"; thence run southwesterly, along the arc of said curve, a distance of 83.32 feet to the point of tangency thereof; thence run S 01°19'11" E, a distance of 10.01 feet; thence run S 88°40'49" W, a distance of 95.77 feet to a point on a non-tangent curve, concave southwesterly, having a radius of 50.00 feet; thence, on a chord bearing of N 50°06'59" W and a chord distance of 70.67 feet, run northwesterly, along the arc of said curve, a distance of 78.48 feet, through a central angle of 89°55'38" to the point of tangency thereof; thence run S 84°55'12" W, a distance of 2.48 feet to a point on a non-tangent curve, concave southeasterly, having a radius of 1000.50 feet; thence, on a chord bearing of S 78°31'53" W and a chord distance of 134.81 feet, run westerly, along the arc of said curve, a distance of 134.91 feet, through a central angle of 07°43'33" to a point; thence run S 86°54'55" W, a distance of 50.82 feet to a point on a non-tangent curve, concave southwesterly, having a radius of 1012.50 feet; thence, on a chord bearing of S 58°14'13" W and a chord distance of 476.84 feet, run southwesterly, along the arc of said curve, a distance of 481.37 feet, through a central angle of 27°14'23" to a point of compound curvature of a curve, concave easterly, having a radius of 35.00 feet and a central angle of 94°43'00"; thence run southerly, along the arc of said curve, a distance of 57.86 feet to the point of tangency thereof; thence run S 50°05'58" E, a distance of 6.60 feet; thence run S 39°54'02" W, a distance of 80.00 feet; thence run S 50°05'58" W, a distance of 0.76 feet to a point of curvature of a curve, concave southerly, having a radius of 30.00 feet and a central angle of 93°49'05"; thence run westerly, along the arc of said curve, a distance of 49.12 feet to a point of compound curvature of a curve, concave southwesterly, having a radius of 1000.50 feet and a central angle of 09°01'44"; thence run southwesterly, along the arc of said curve, a distance of 157.66 feet to a point; thence run S 39°18'02" W, a distance of 50.82 feet to a point on a non-tangent curve, concave southwesterly, having a radius of 1012.50 feet; thence, on a chord bearing of S 20°16'17" W and a chord distance of 140.22 feet, run southerly, along the arc of said curve, a distance of 140.34 feet, through a central angle of 07°56'29" to the point of tangency thereof; thence run S 16°18'02" W, a distance of 874.22 feet to a point of curvature of a curve, concave northwesterly, having a radius of 1590.50 feet and a central angle of 40°58'14"; thence run southwesterly, along the arc of said curve, a distance of 1137.32 feet to the point of tangency thereof; thence run S 57°16'16" W, a distance of 773.85 feet; thence run S 53°59'20" E, a distance of 41.31 feet to a point on the northerly line of an Orlando Utilities Commission Railroad, as described and recorded in Official Records Book 3491, Page 539 and Official Records Book 3674, Page 2203, Public Records of Orange County, Florida; thence run S 57°16'16" W, along said northerly line, a distance of 637.41 feet to a point 50.00 feet north of the south line of the Northeast 1/4 of said Section 9; thence run N 89°49'06" W, parallel with the south line of the Northeast 1/4 of said Section 9, a distance of 17.41 feet to a point on the west line of the Northeast 1/4 of said Section 9; thence run N 01°27'34" E, along said west line, a distance of 189.14 feet to a point on a non-tangent curve, concave northwesterly, having a radius of 1465.50 feet; thence, departing said west line, on a chord bearing of N 58°54'56" E and a chord distance of 84.12 feet, run northeasterly, along the arc of said curve, a distance of 84.13 feet, through a central angle of 03°17'21" to the point of tangency thereof; thence run N 57°16'16" E, a distance of 1220.54 feet to a point of curvature of a curve, concave northwesterly, having a radius of 1465.50 feet and a central angle of 40°58'14"; thence run northwesterly, along the arc of said curve, a distance of 37.19 feet to the point of tangency thereof; thence run N 01°15'28" W, a distance of 424.16 feet to a point on a non-tangent curve, concave southwesterly, having a radius of 1343.41 feet to a point of reverse curvature of a curve, concave northwesterly, having a radius of 25.00 feet and a central angle of 85°13'34"; thence run northeasterly, along the arc of said curve, a distance of 37.19 feet to the point of tangency thereof; thence run N 01°15'28" W, a distance of 424.16 feet to a point on a non-tangent curve, concave southwesterly, having a radius of 330.47 feet; thence, on a chord bearing of N 29°40'23" W and a chord distance of 321.65 feet, run northwesterly, along the arc of said curve, a distance of 335.93 feet, through a central angle of 58°14'29" to a point; thence run N 59°29'21" W, a distance of 394.66 feet to a point of curvature of a curve, concave northwesterly, having a radius of 467.25 feet and a central angle of 16°45'59"; thence run northwesterly, along the arc of said curve, a distance of 136.73 feet to the cusp of a non-tangent curve, concave southeasterly, having a radius of 25.00 feet; thence, on a chord bearing of N 24°34'32" W and a chord distance of 16.99 feet, run northwesterly, along the arc of said curve, a distance of 17.33 feet, through a central angle of 39°43'26" to a point of reverse curvature of a curve, concave northwesterly, having a radius of 463.76 feet and a central angle of 15°25'09"; thence run northwesterly, along the arc of said curve, a distance of 124.80 feet to a point on a non-tangent curve, concave easterly, having a radius of 470.25 feet; thence, on a chord bearing of N 13°41'00" W and a chord distance of 191.27 feet, run northerly, along the arc of said curve, a distance of 192.62 feet, through a central angle of 23°28'08" to the point of tangency thereof; thence run N 01°56'55" W, a distance of 129.11 feet to a point of curvature of a curve, concave westerly, having a radius of 329.75 feet and a central angle of 26°33'34"; thence run northerly, along the arc of said curve, a distance of 152.85 feet to the point of tangency thereof; thence run N 28°30'29" W, a distance of 13.31 feet to a point of curvature of a curve, concave southerly, having a radius of 25.00 feet and a central angle of 86°44'13"; thence run westerly, along the arc of said curve, a distance of 37.85 feet to a point of reverse curvature of a curve, concave northerly, having a radius of 1649.50 feet and a central angle of 16°24'38"; thence run westerly, along the arc of said curve, a distance of 472.45 feet to a point; thence run N 84°16'36" W, a distance of 50.66 feet to a point on a non-tangent curve, concave northerly, having a radius of 1637.50 feet; thence, on a chord bearing of S 83°14'39" W and a chord distance of 20.73 feet, run westerly, along the arc of said curve, a distance of 20.73 feet, through a central angle of 00°43'31" to a point on the easterly line of STOREY PARK – PHASE 1, according to the plat thereof, as recorded in Plat Book 86, Pages 61 through 71, Public Records of Orange County, Florida; thence run N 06°23'35" W, along said easterly line, a distance of 125.00 feet to a point on the northerly right-of-way line of Dowden Road; said point being a point on a non-tangent curve, concave northerly, having a radius of 1512.50 feet; thence, on a chord bearing of N 82°16'36" E and a chord distance of 70.23 feet, run easterly, along the arc of said curve, a distance of 70.23 feet, through a central angle of 02°39'38" to the POINT OF BEGINNING.

Containing 22.19 acres, more or less.



NOTICE:

THIS PLAT, AS RECORDED IN ITS GRAPHIC FORM, IS THE OFFICIAL DEPICTION OF THE SUBDIVISION AND THE BOUNDARIES THEREOF. ANY DISCREPANCIES BETWEEN THE GRAPHIC FORM AND THE TEXT HEREON SHALL BE DEEMED TO BE THE RESULT OF A MISTAKE, AND THE GRAPHIC FORM SHALL BE SUPREMACY. IN ANY DISCREPANCY BETWEEN THE GRAPHIC FORM AND THE TEXT HEREON, THE GRAPHIC FORM SHALL CONTROL. THERE MAY BE ADDITIONAL RESTRICTIONS THAT ARE NOT RECORDED ON THIS PLAT THAT MAY BE FOUND IN THE PUBLIC RECORDS OF THIS COUNTY.

#### QUALIFICATION STATEMENT OF SURVEYOR AND MAPPER

KNOW ALL MEN BY THESE PRESENTS, That the undersigned, being a professional surveyor and mapper that has prepared the foregoing plat and was made under my direction and supervision and that the plat complies with all of the survey requirements of Chapter 177, Part 1, Florida Statutes; and that said land is located in the City of Orlando, Orange County, Florida.

KNOW ALL MEN BY THESE PRESENTS, That the undersigned, collectively being the owners in fee simple of the lands described in the foregoing caption to this plat, hereby dedicate said lands and plot for the uses and purposes therein expressed and declares Innovation Way, Storey Park Boulevard and Dowden Road to the perpetual use of the public.

The 10.00 foot wide Multi-Purpose Trail Easement located adjacent to Innovation Way is dedicated to and shall be maintained by the City of Orlando, Florida.

IN WITNESS WHEREOF, Moss Park Properties, LLP has caused these presents to be signed by the authorized agent named below.

**MOSS PARK PROPERTIES, LLP**  
a Florida limited liability limited partnership

BY: \_\_\_\_\_ Title \_\_\_\_\_

Printed Name \_\_\_\_\_

witness \_\_\_\_\_

printed name \_\_\_\_\_

STATE OF \_\_\_\_\_ COUNTRY OF \_\_\_\_\_

The foregoing was acknowledged before me this \_\_\_\_\_ day of \_\_\_\_\_, 2016 by \_\_\_\_\_ as \_\_\_\_\_ of Moss Park Properties, LLP, a Florida limited liability limited partnership, on behalf of the partnership. He/She is personally know to me or has produced \_\_\_\_\_ as identification.

NOTARY PUBLIC \_\_\_\_\_ NOTARY STAMP \_\_\_\_\_

IN WITNESS WHEREOF, Lennor Homes LLC, has caused these presents to be signed by the authorized agent named below.

**LENNOR HOMES, LLC**  
a Florida limited liability company

BY: \_\_\_\_\_ Vice-President \_\_\_\_\_

Printed Name \_\_\_\_\_ Title \_\_\_\_\_

witness \_\_\_\_\_

printed name \_\_\_\_\_

printed name \_\_\_\_\_

printed name \_\_\_\_\_

STATE OF \_\_\_\_\_ COUNTRY OF \_\_\_\_\_

The foregoing was acknowledged before me this \_\_\_\_\_ day of \_\_\_\_\_ by \_\_\_\_\_ as Vice-President \_\_\_\_\_ of Lennor Homes, LLC, a Florida limited liability company, on behalf of the company. He/She is personally know to me or has produced \_\_\_\_\_ as identification.

NOTARY PUBLIC \_\_\_\_\_ NOTARY STAMP \_\_\_\_\_

#### CERTIFICATE OF APPROVAL BY MUNICIPALITY

THIS IS TO CERTIFY, That on \_\_\_\_\_ the \_\_\_\_\_ approved the foregoing plat.

MAYOR: \_\_\_\_\_

ATTEST: \_\_\_\_\_ CITY CLERK \_\_\_\_\_

#### CERTIFICATE OF APPROVAL BY CITY PLANNING OFFICIAL

Examined and Approved: \_\_\_\_\_ Date \_\_\_\_\_

City Planning Official: \_\_\_\_\_

#### CERTIFICATE OF COUNTY COMPTROLLER

I HEREBY CERTIFY that the foregoing plat was recorded in the Orange County Official Records on \_\_\_\_\_ as File No. \_\_\_\_\_

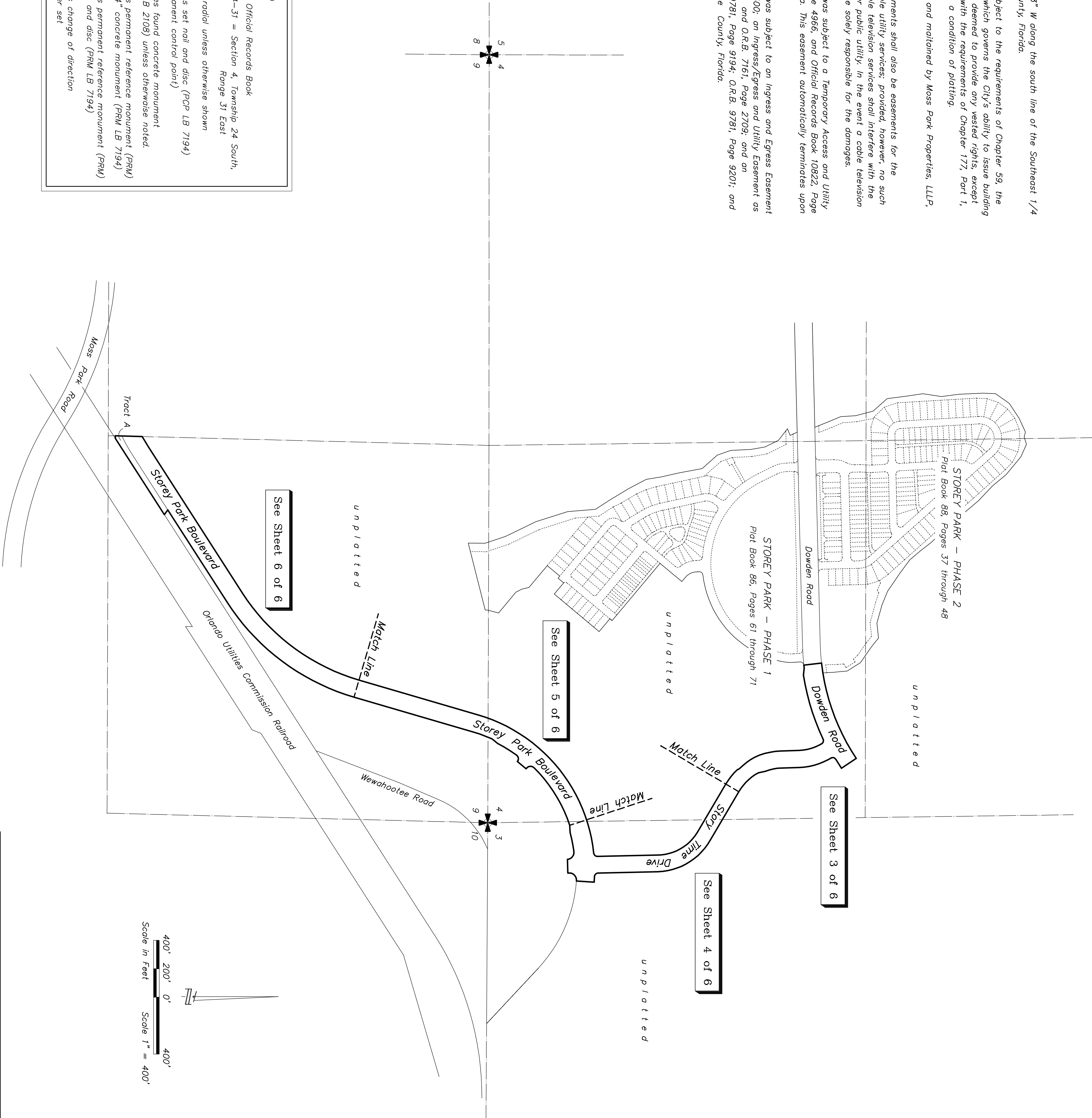
County Comptroller in and for Orange County, Florida.

# STOREY PARK ROADWAYS

A portion of Sections 3, 4 and 9, Township 24 South, Range 31 East  
City of Orlando, Orange County, Florida

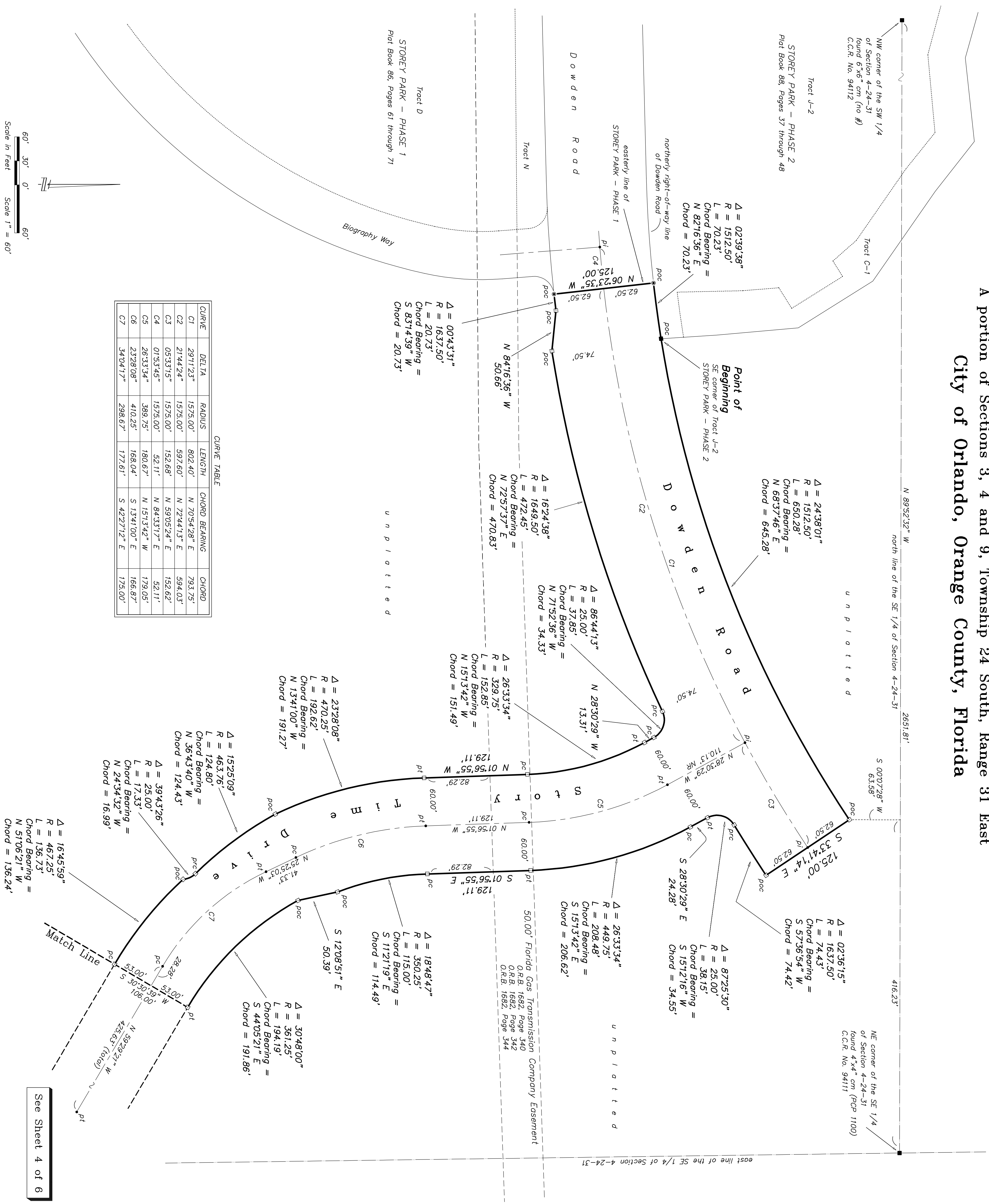
Surveyor's Notes:

1. Bearings are based on an assumed bearing of N 89°48'53" W along the south line of the Southeast 1/4 of Section 4, Township 24 South, Range 31 East, Orange County, Florida.
2. Development on this property depicted on this plat is subject to the requirements of Chapter 59, the Concurrency Management Ordinance of the City of Orlando, which governs the City's ability to issue building permits on this property. Approval of this plat shall not be deemed to provide any vested rights, except as to those matters depicted hereon, that are consistent with the requirements of Chapter 177, Part 1, Florida Statutes, or were required by the City of Orlando as a condition of platting.
3. Tract A is dedicated as Open Space and shall be owned and maintained by Moss Park Properties, LLLP, its successors and/or assigns.
4. All platted utility easements shall provide that such easements shall also be easements for the construction, installation, maintenance, and operation of cable utility services; provided, however, no such construction, installation, maintenance, and operation of cable television services shall interfere with the facilities and services of an electric, telephone, gas, or other public utility. In the event a cable television company damages the facilities of a public utility, it shall be solely responsible for the damages.
5. At the time of recording, the property described herein was subject to a Temporary Access and Utility Easement as recorded in Official Records Book 10464, Page 4966, and Official Records Book 10822, Page 4757, both of the Public Records of Orange County, Florida. This easement automatically terminates upon recordation of this plat.
6. At the time of recording, the property described herein was subject to an Ingress and Egress Easement as recorded in Official Records Book (O.R.B.) 5408, Page 1400; on Ingress/Egress and Utility Easement as recorded in O.R.B. 6454, Page 729; O.R.B. 6454, Page 736; and O.R.B. 7161, Page 2709, and on Ingress/Egress and Utility Easement as recorded in O.R.B. 9781, Page 9194; O.R.B. 9781, Page 9201; and O.R.B. 9825, Page 8206; all of the Public Records of Orange County, Florida.



# STOREY PARK ROADWAYS

A portion of Sections 3, 4 and 9, Township 24 South, Range 31 East  
City of Orlando, Orange County, Florida



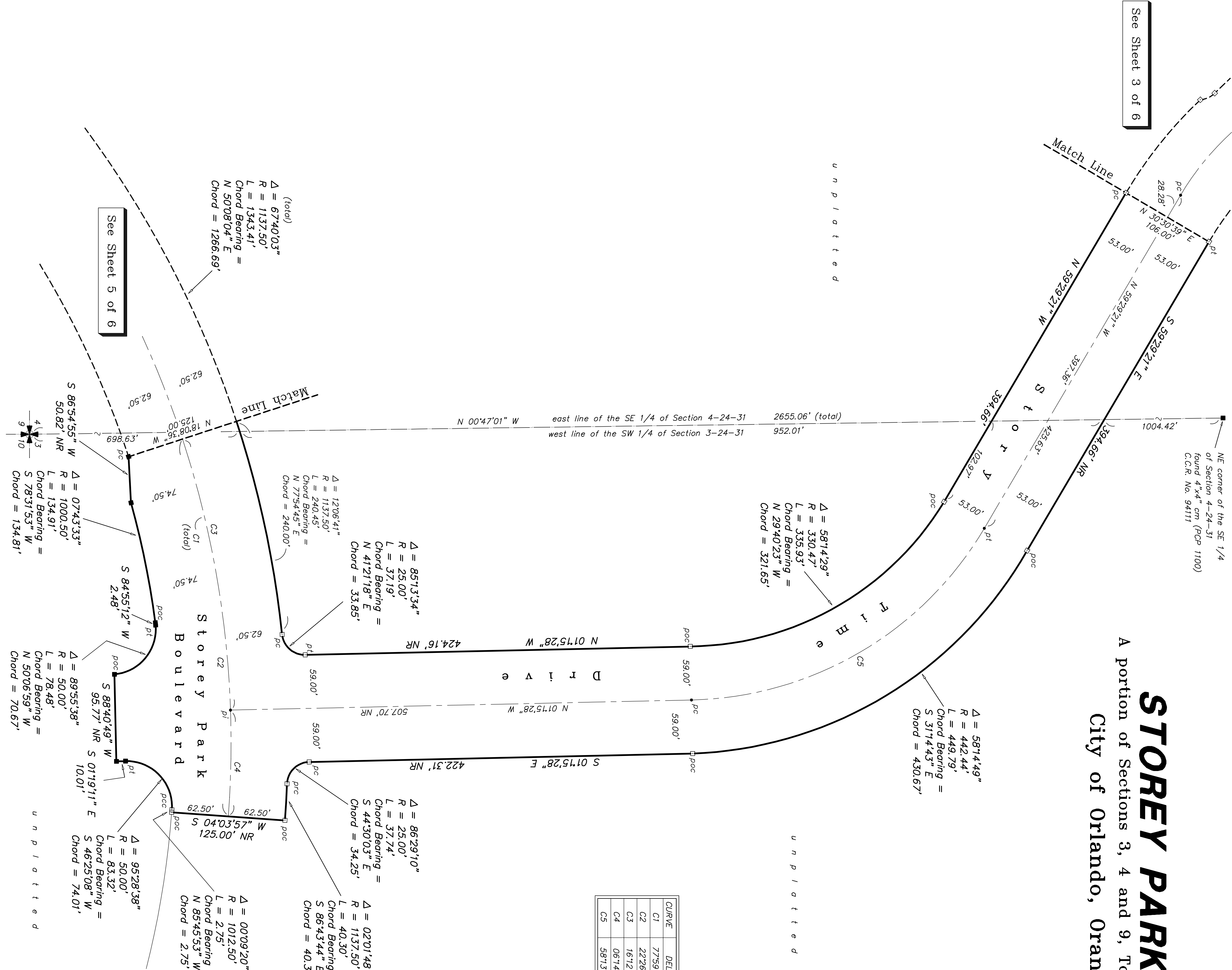
CURVE	DELTA	RADIUS	LENGTH	CHORD BEARING	CHORD
C1	29°11'23"	1575.00'	802.40'	N 70°54'28" E	793.75'
C2	21°44'24"	1575.00'	597.60'	N 72°44'13" E	594.03'
C3	05°33'15"	1575.00'	152.68'	N 59°05'34" E	152.62'
C4	07°53'45"	1575.00'	52.11'	N 84°33'17" E	52.11'
C5	26°33'34"	389.75'	180.67'	N 15°13'42" W	179.05'
C6	23°28'08"	410.25'	168.04'	S 13°41'00" E	166.87'
C7	34°04'17"	298.67'	177.61'	S 42°27'12" E	175.00'

See Sheet 4 of 6

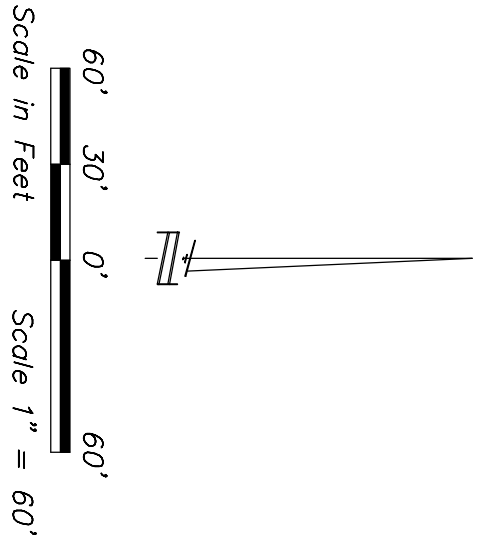


STOREY PARK ROADWAYS

A portion of Sections 3, 4 and 9, Township 24 South, Range 31 East  
City of Orlando, Orange County, Florida



CURVE	DELTA	RADIUS	CHORD BEARING	CHORD
C1	77°59'54"	1075.00'	S 5517°59' W	1353.01'
C2	22°26'31"	1075.00'	S 83°04'40" W	418.38'
C3	16°12'21"	1075.00'	S 79°57'35" W	303.04'
C4	06°14'10"	1075.00'	N 88°49'10" W	116.95'
C5	58°13'52"	384.08'	N 30°22'24" W	373.77'



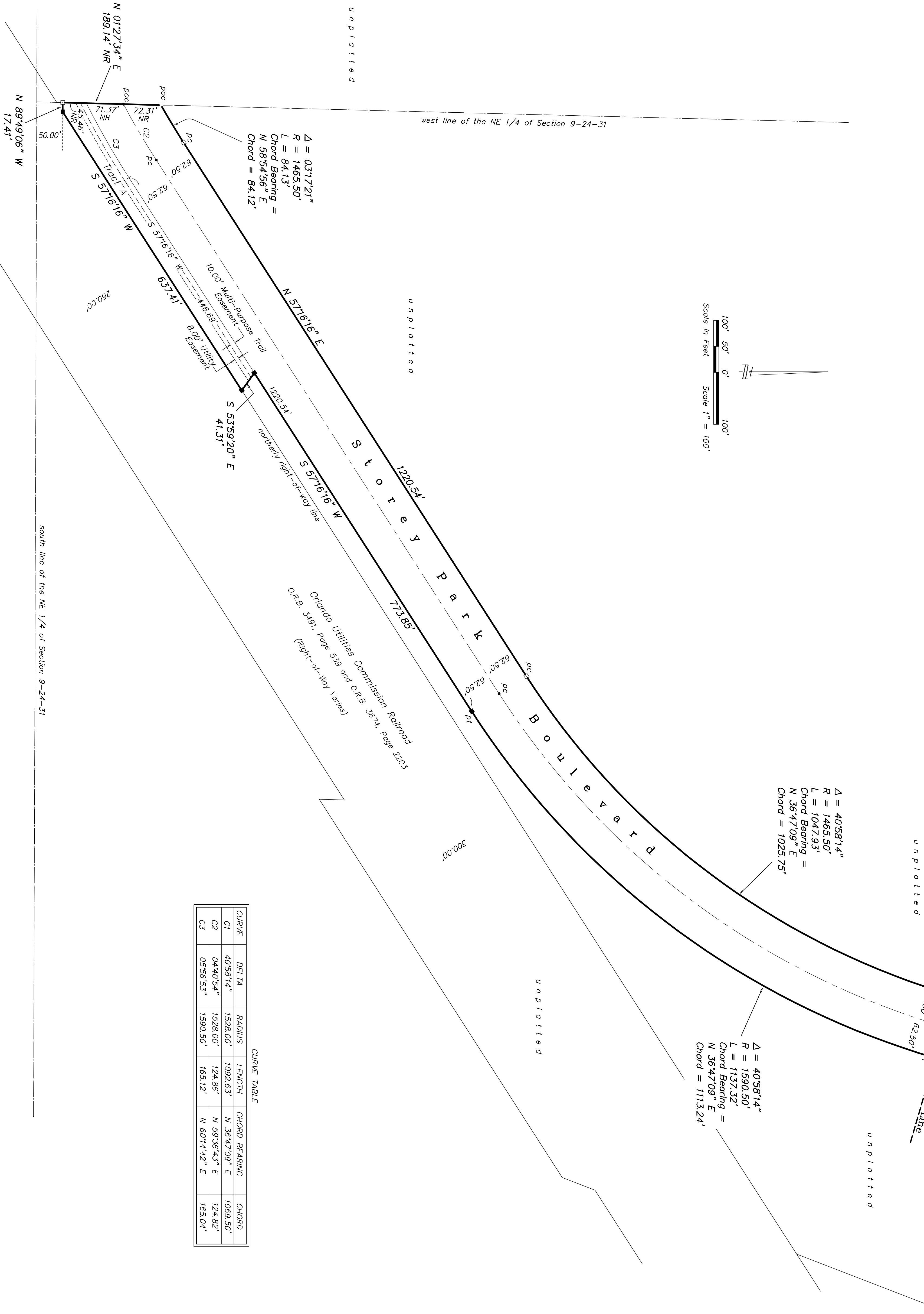
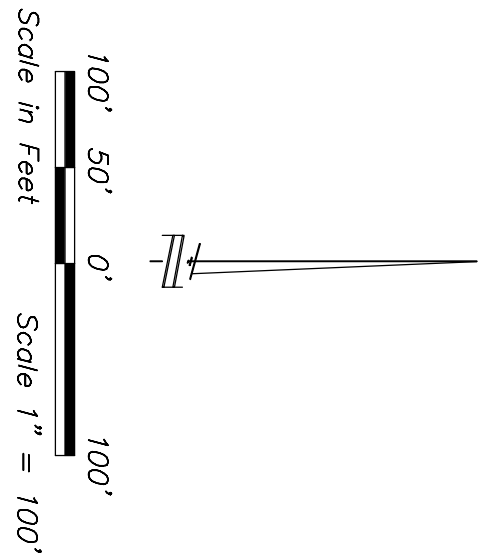
A portion of Sections 3, 4 and 9, Township 24 South, Range 31 East  
City of Orlando, Orange County, Florida



# STOREY PARK ROADWAYS

A portion of Sections 3, 4 and 9, Township 24 South, Range 31 East  
City of Orlando, Orange County, Florida

See Sheet 5 of 6



Δ = 037°21\"  
R = 1465.50'  
L = 84.13'  
Chord Bearing =  
N 58°34'56\" E  
Chord = 84.12'

Orlando Utilities Commission Railroad  
O.R.B. 3491, Page 539 and O.R.B. 3674, Page 2203  
(Right-of-Way Varies)

CURVE TABLE

CURVE	DELTA	RADIUS	LENGTH	CHORD BEARING	CHORD
C1	40°58'14"	1528.00'	1092.63'	N 36°47'09" E	1068.50'
C2	04°40'54"	1528.00'	124.86'	N 59°36'43" E	124.82'
C3	05°56'53"	1590.50'	165.12'	N 60°14'42" E	165.04'