

CONWAY RETAIL

SHEET 2 OF 3

PLAT BOOK

PAGE

BEING A REPLAT OF CONWAY COMMERCIAL CENTER—REPLAT OF PART OF LOT 2, ACCORDING TO THE PLAT THEREOF AS RECORDED IN PLAT BOOK 7, PAGE 7, PUBLIC RECORDS OF ORANGE COUNTY, FLORIDA. SAID LANDS BEING IN SECTION 5, TOWNSHIP 23 SOUTH, RANGE 30 EAST, CITY OF ORLANDO, ORANGE COUNTY, FLORIDA

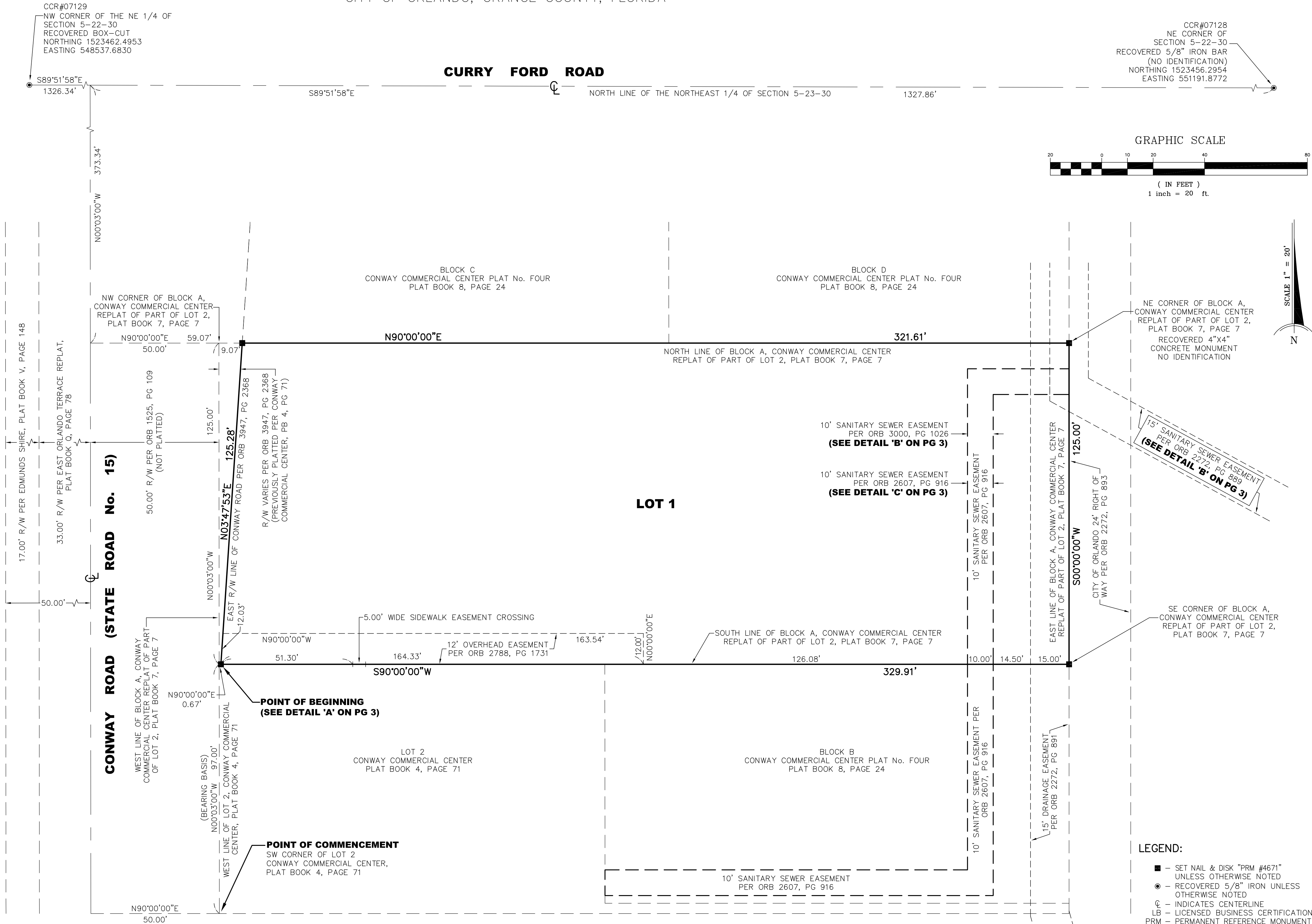
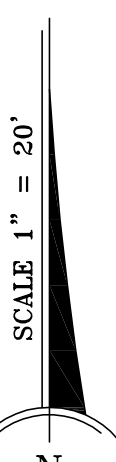
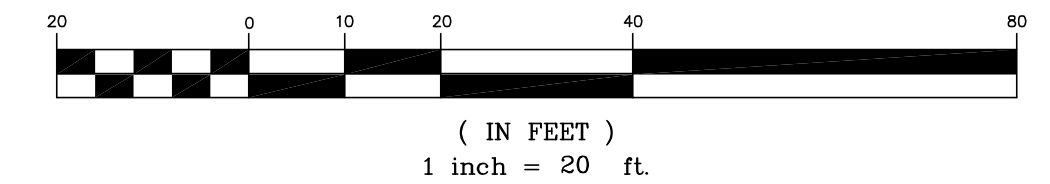
CCR#07129
NW CORNER OF THE NE 1/4 OF SECTION 5-22-30
RECOVERED BOX-CUT
NORTHING 1523462.4953
EASTING 548537.6830

CCR#07128
NE CORNER OF SECTION 5-22-30
RECOVERED 5/8" IRON BAR
(NO IDENTIFICATION)
NORTHING 1523456.2954
EASTING 551191.8772

CURRY FORD ROAD

NORTH LINE OF THE NORTHEAST 1/4 OF SECTION 5-23-30 1327.86'

GRAPHIC SCALE



15' SANITARY SEWER EASEMENT
PER ORB 2272, PG 889
(SEE DETAIL 'B' ON PG 3)

10' SANITARY SEWER EASEMENT
PER ORB 3000, PG 1026
(SEE DETAIL 'B' ON PG 3)

10' SANITARY SEWER EASEMENT
PER ORB 2607, PG 916
(SEE DETAIL 'C' ON PG 3)

SE CORNER OF BLOCK A,
CONWAY COMMERCIAL CENTER
REPLAT OF PART OF LOT 2,
PLAT BOOK 7, PAGE 7

- LEGEND:**
- - SET NAIL & DISK "PRM #4671" UNLESS OTHERWISE NOTED
 - - RECOVERED 5/8" IRON UNLESS OTHERWISE NOTED
 - Ⓢ - INDICATES CENTERLINE
 - LB - LICENSED BUSINESS CERTIFICATION
 - PRM - PERMANENT REFERENCE MONUMENT
 - R/W - RIGHT-OF-WAY
 - # - NUMBER
 - PB - PLAT BOOK
 - PG - PAGE
 - CCR - CERTIFIED CORNER RECORD
 - NE - NORTHEAST
 - SE - SOUTHEAST
 - SW - SOUTHWEST
 - NW - NORTHWEST
 - ORB - OFFICIAL RECORDS BOOK

SHANNON SURVEYING, INC.
499 NORTH S.R. 434 - SUITE 2155
ALTA MONTE SPRINGS, FLORIDA, 32714
(407) 774-8372 LB # 6898

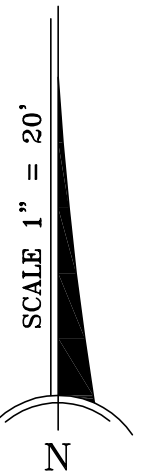
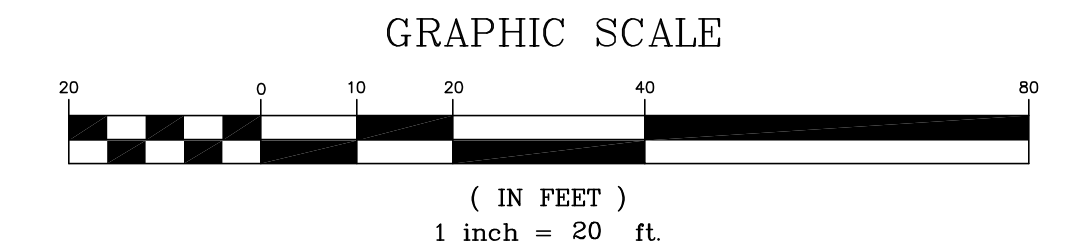
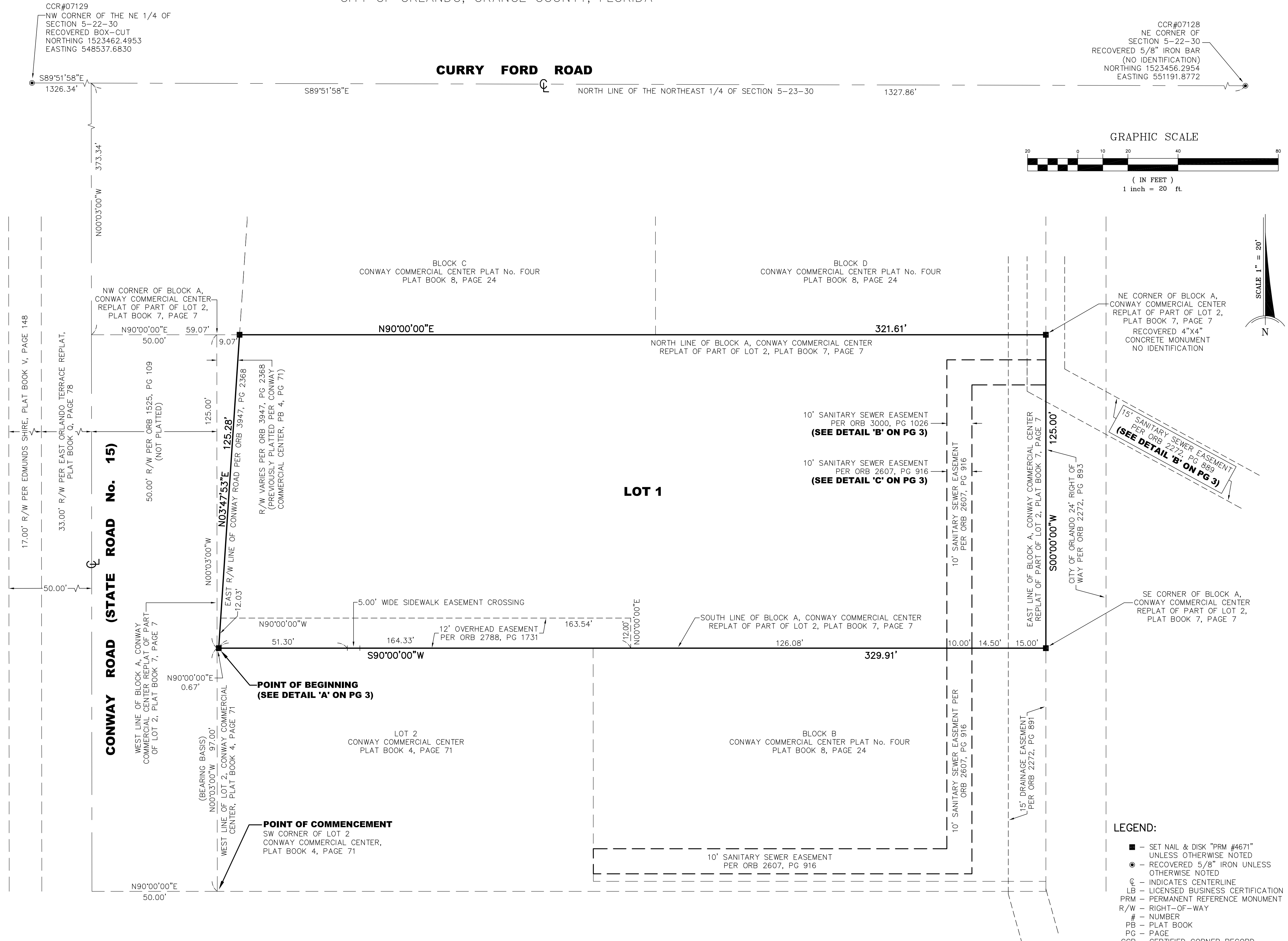
CONWAY RETAIL

SHEET 2 OF 3

PLAT BOOK

PAGE

BEING A REPLAT OF CONWAY COMMERCIAL CENTER—REPLAT OF PART OF LOT 2, ACCORDING TO THE PLAT THEREOF AS RECORDED IN PLAT BOOK 7, PAGE 7, PUBLIC RECORDS OF ORANGE COUNTY, FLORIDA. SAID LANDS BEING IN SECTION 5, TOWNSHIP 23 SOUTH, RANGE 30 EAST, CITY OF ORLANDO, ORANGE COUNTY, FLORIDA



SHANNON SURVEYING, INC.
499 NORTH S.R. 434 - SUITE 2155
ALTAMONTE SPRINGS, FLORIDA, 32714
(407) 774-8372 LB # 6898

- LEGEND:**
- - SET NAIL & DISK "PRM #4671" UNLESS OTHERWISE NOTED
 - - RECOVERED 5/8" IRON UNLESS OTHERWISE NOTED
 - ⊕ - INDICATES CENTERLINE
 - LB - LICENSED BUSINESS CERTIFICATION
 - PRM - PERMANENT REFERENCE MONUMENT
 - R/W - RIGHT-OF-WAY
 - # - NUMBER
 - PB - PLAT BOOK
 - PG - PAGE
 - CCR - CERTIFIED CORNER RECORD
 - NE - NORTHEAST
 - SE - SOUTHEAST
 - SW - SOUTHWEST
 - NW - NORTHWEST
 - ORB - OFFICIAL RECORDS BOOK

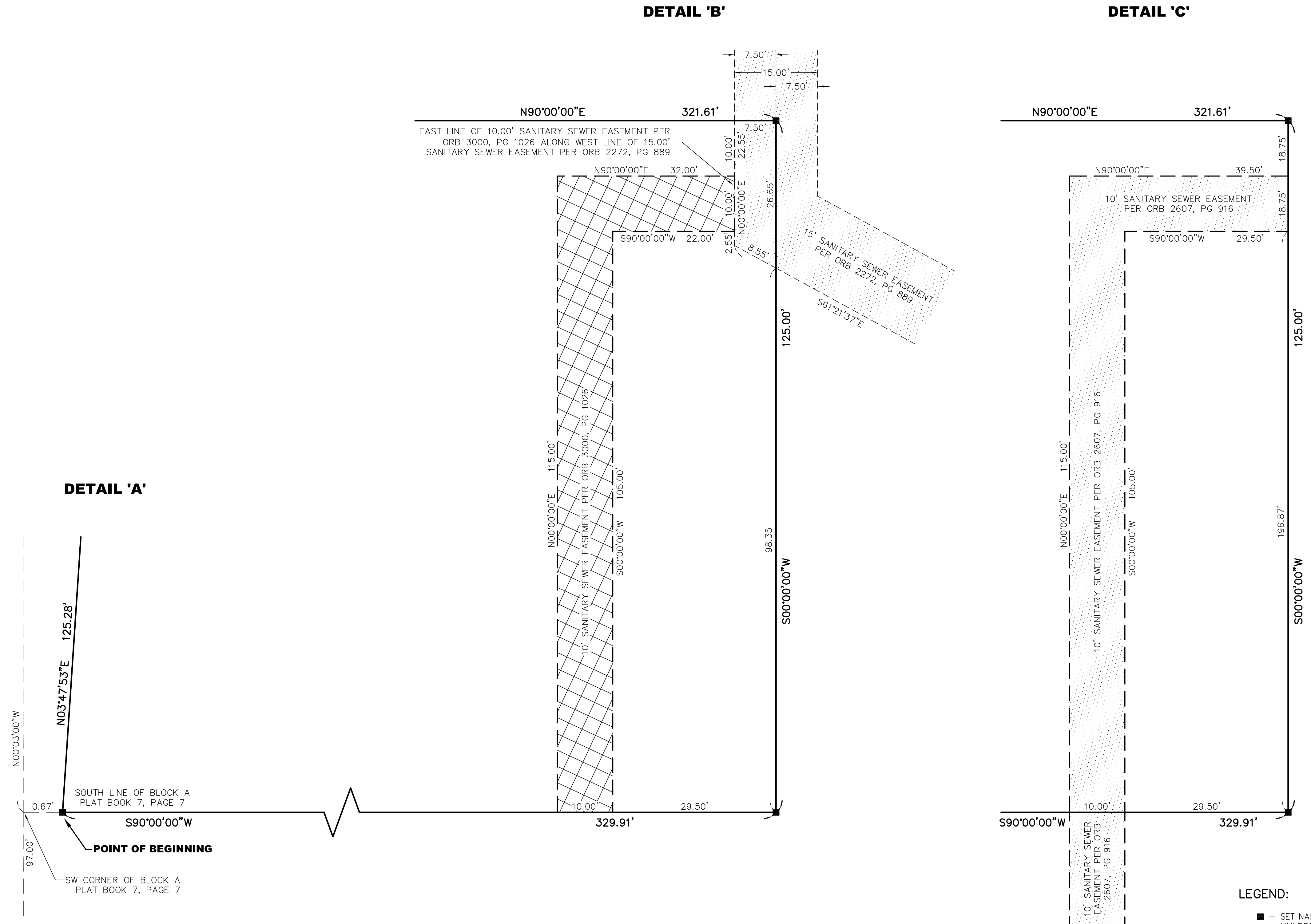
CONWAY RETAIL

SHEET 3 OF 3

PLAT BOOK

PAGE

BEING A REPLAT OF CONWAY COMMERCIAL CENTER—REPLAT OF PART OF LOT 2, ACCORDING TO THE PLAT THEREOF AS RECORDED IN PLAT BOOK 7, PAGE 7, PUBLIC RECORDS OF ORANGE COUNTY, FLORIDA. SAID LANDS BEING IN SECTION 5, TOWNSHIP 23 SOUTH, RANGE 30 EAST, CITY OF ORLANDO, ORANGE COUNTY, FLORIDA



- LEGEND:**
- - SET NAIL & DISK "PRM #4671" UNLESS OTHERWISE NOTED
 - - RECOVERED 5/8" IRON UNLESS OTHERWISE NOTED
 - ⊙ - INDICATES CENTERLINE
 - LB - LICENSED BUSINESS CERTIFICATION
 - PRM - PERMANENT REFERENCE MONUMENT
 - R/W - RIGHT-OF-WAY
 - # - NUMBER
 - PB - PLAT BOOK
 - PG - PAGE
 - CCR - CERTIFIED CORNER RECORD
 - NE - NORTHEAST
 - SE - SOUTHEAST
 - SW - SOUTHWEST
 - NW - NORTHWEST
 - ORB - OFFICIAL RECORDS BOOK

SHANNON SURVEYING, INC.
 499 NORTH S.R. 434 - SUITE 2155
 ALTAMONTE SPRINGS, FLORIDA, 32714
 (407) 774-8372 LB # 6898