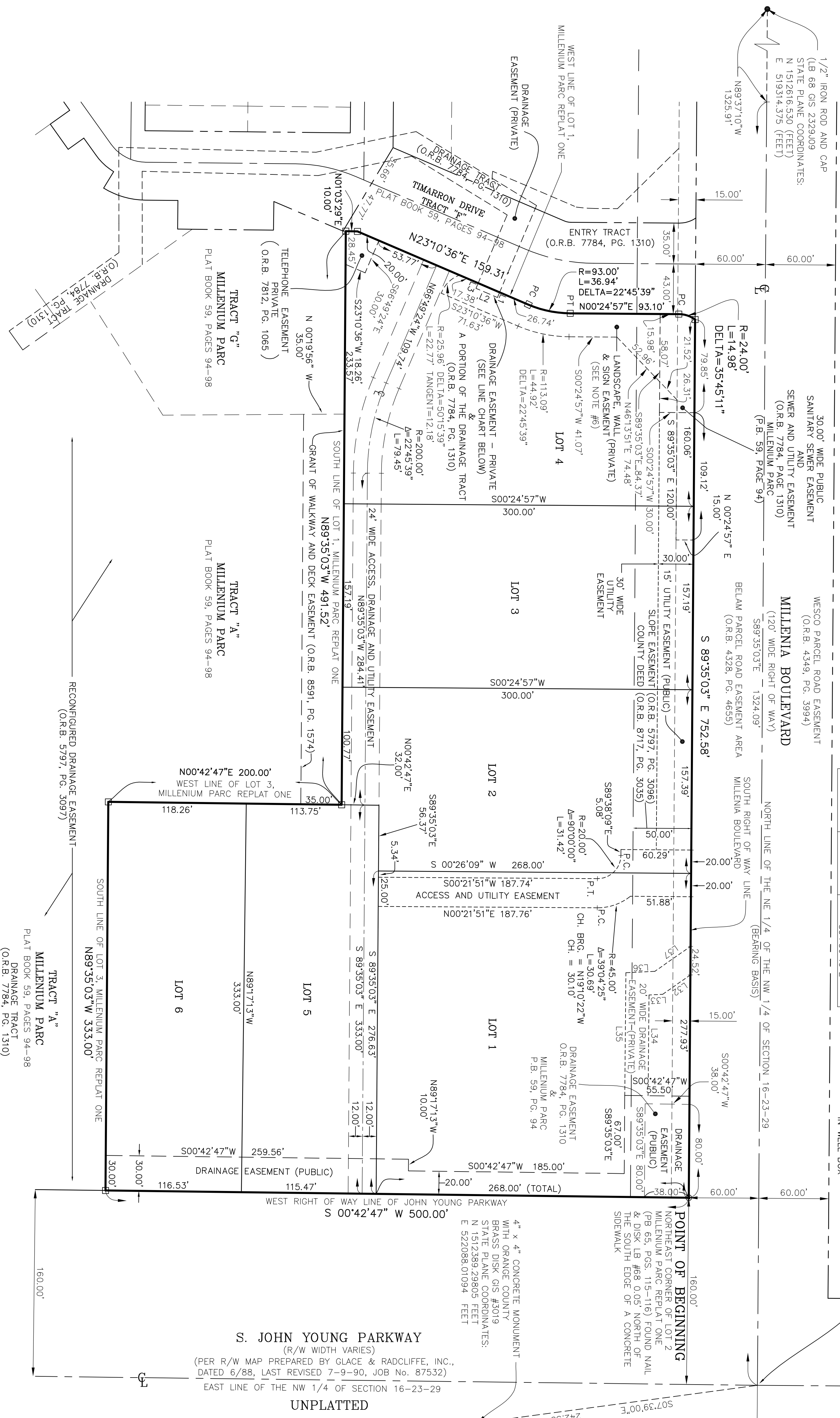


MILLENNIUM PARC REPLAT TWO
 A REPLAT OF MILLENNIUM PARC REPLAT ONE,
 AS RECORDED IN PLAT BOOK 65, PAGES 115-116,
 PUBLIC RECORDS OF ORANGE COUNTY, FLORIDA
 LOCATED IN SECTION 16, TOWNSHIP 23 SOUTH, RANGE 29 EAST
 CITY OF ORLANDO, ORANGE COUNTY, FLORIDA

LINE	LENGTH	BEARING
L32	28.96	S34°56'49"E
L33	11.73	S02°49'46"E
L34	86.30	S89°28'04"E
L35	105.10	S89°28'04"E
L36	24.83	S02°49'46"E
L37	37.40	S34°56'49"E

SOUTHEAST CORNER OF SW 1/4 OF SECTION 09,
 TOWNSHIP 23 SOUTH, RANGE 29 EAST,
 ORANGE COUNTY, FLORIDA

 CERTIFIED CORNER RECORD #7247
 NOTED AS BEING A 4"x4" CONCRETE MONUMENT
 IN WELL BOX



DIMENSIONS FOR PRIVATE DRAINAGE EASEMENT

LINE	BEARING	LENGTH
L1	S66°57'03"E	4.84'
L2	S23°02'57"W	20.00'
L3	N66°57'03"W	4.88'

- CORNER SYMBOL LEGEND**
- RECOVERED NAIL & DISK LB #3778 (UNLESS OTHERWISE NOTED)
 - SET 4"x4" CONCRETE MONUMENT LB #3778 (UNLESS OTHERWISE NOTED)
 - SET 1.5" IRON PIPE & CAP LB #3778 (UNLESS OTHERWISE NOTED)
 - P.C., P.T., CHANGE IN DIRECTION, ETC. (NO CORNER SET)

Tinklepaugh
 SURVEYING SERVICES
 850 COURTLAND STREET, SUITE 2A • ORLANDO, FLORIDA 32804
 TELEPHONE NO. (407) 262-0957 FACSIMILE NO. (407) 679-6915
 LICENSED BUSINESS NO. 3778

