

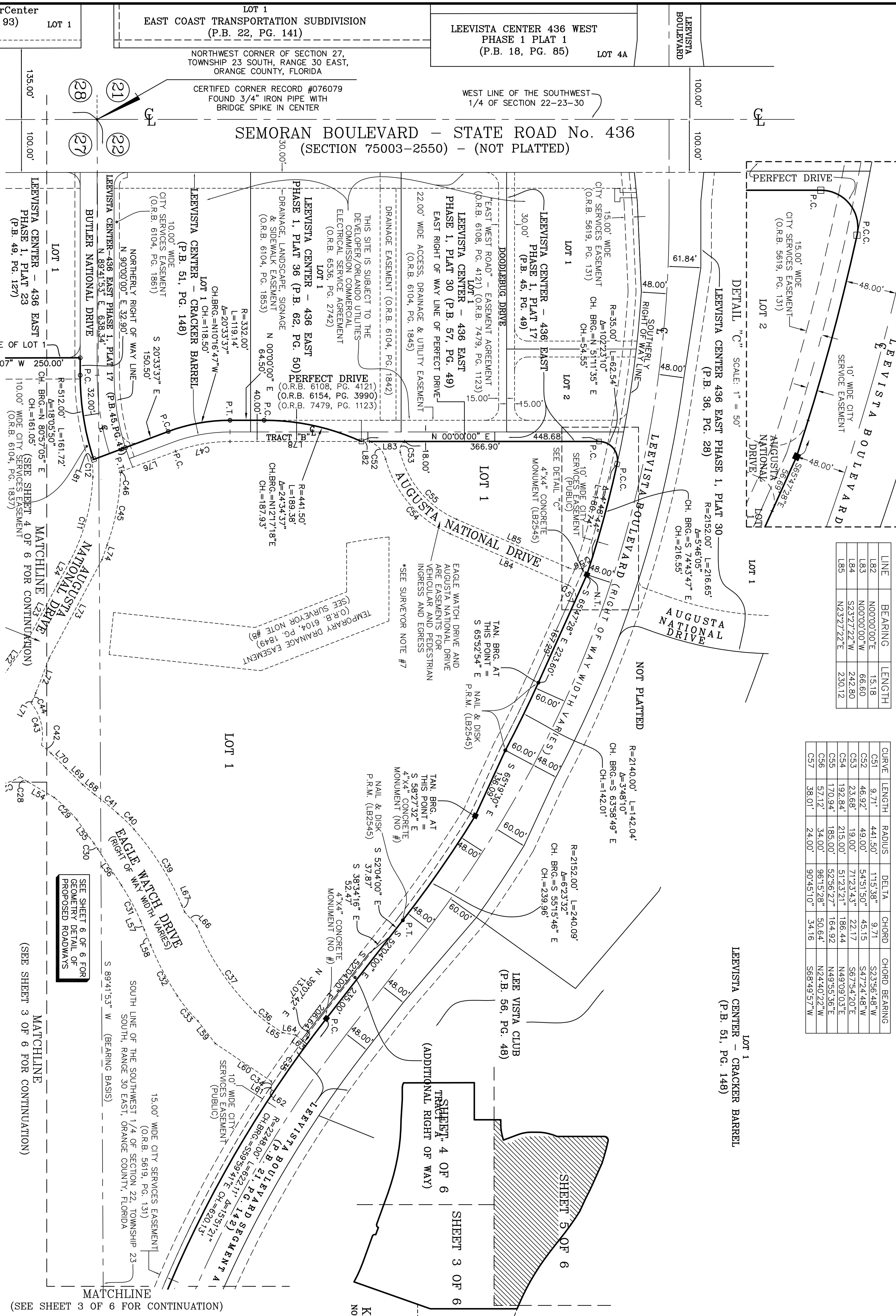
LEEVI STA CENTER 436 EAST, PHASE 1, PLAT 38-REPLAT ONE LOCATED IN SECTIONS 22 AND 27, TOWNSHIP 23 SOUTH, RANGE 30 EAST

CITY OF ORLANDO, ORANGE COUNTY, FLORIDA

LOTS 1 AND 2, LEEVI STA CENTER 436 EAST, PHASE 1, PLAT 38, AS RECORDED IN PLAT BOOK 70, PAGE 63, AND A PORTION OF LEEVI STA CENTER-436 EAST PHASE 1, PLAT 36, AS RECORDED IN PLAT BOOK 62, PAGE 50, AND A PORTION OF LEEVI STA CENTER-CRACKER BARREL, AS RECORDED IN PLAT BOOK 51, PAGE 148, AND A PORTION OF TRACT "B", LEEVI STA CENTER - 436 EAST, PHASE 1, PLAT 17, AS RECORDED IN PLAT BOOK 45 PAGE 49, ALL OF THE PUBLIC RECORDS OF ORANGE COUNTY, FLORIDA

PLAT BOOK PAGE

SHEET 5 OF 6

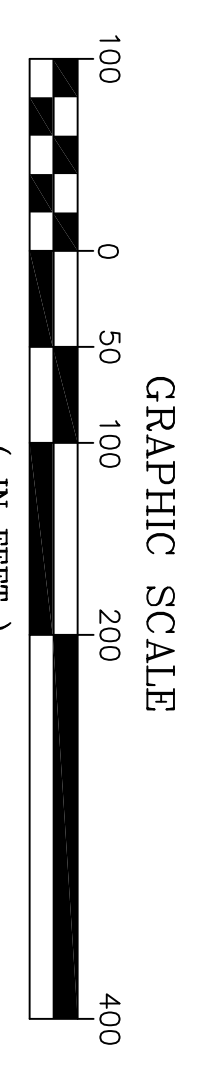


LINE	BEARING	LENGTH
L82	N00°00'00"E	15.18
L83	N00°00'00"W	66.60
L84	S23°27'22"W	242.80
L85	N23°27'22"E	230.12

CURVE	LENGTH	RADIUS	DELTA	CHORD	CHORD BEARING
C51	9.71	441.50	1°15'38"	9.71	S23°56'48"W
C52	46.92	49.00	54°51'50"	45.15	S47°24'48"W
C53	23.68	19.00	71°23'43"	22.17	S67°54'20"E
C54	192.84	215.00	51°23'21"	186.44	N49°09'03"E
C55	170.94	185.00	52°56'22"	164.92	N49°55'36"E
C56	57.12	34.00	96°15'28"	50.64	N24°40'22"W
C57	38.01	24.00	90°45'10"	34.16	S68°49'57"W

SYMBOLS LEGEND

- - FOUND CONCRETE MONUMENT (IDENTIFICATION AS NOTED)
- - SET CONCRETE MONUMENT (PRM POP LB3778)
- - SET NAIL AND DISK OR IRON PIPE (PRM POP LB3778)
- - FOUND NAIL AND DISK (IDENTIFICATION AS NOTED)
- P.C., P.T., CHANGE IN DIRECTION, ETC. (NO CORNER SET)



Tinklepaugh
SURVEYING SERVICES
850 COURTLAND STREET, SUITE A-2 • ORLANDO, FLORIDA 32804
TELEPHONE NO. (407) 282-0957 - LICENSED BUSINESS NO. 3778