

LEEVI STA CENTER 436 EAST, PHASE 1, PLAT 38-REPLAT ONE LOCATED IN SECTIONS 22 AND 27, TOWNSHIP 23 SOUTH, RANGE 30 EAST

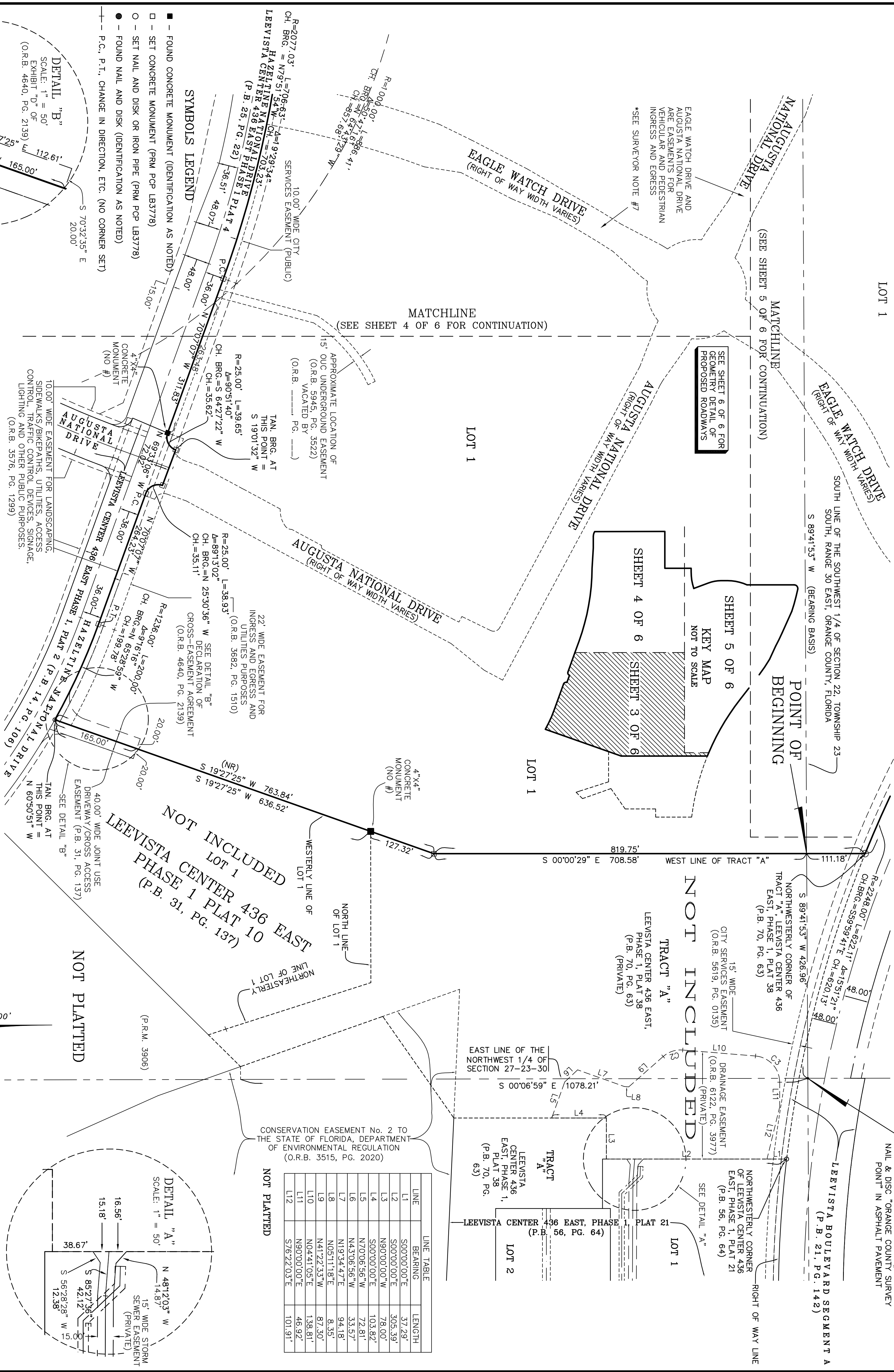
PLAT BOOK
PAGE

CITY OF ORLANDO, ORANGE COUNTY, FLORIDA

LOTS 1 AND 2, LEEVI STA CENTER 436 EAST, PHASE 1, PLAT 38, AS RECORDED IN PLAT BOOK 70, PAGE 63, AND A PORTION OF LEEVI STA CENTER-436 EAST PHASE 1, PLAT 36, AS RECORDED IN PLAT BOOK 62, PAGE 50, AND A PORTION OF LEEVI STA CENTER-CRACKER BARREL, AS RECORDED IN PLAT BOOK 51, PAGE 148, AND A PORTION OF TRACT "B", LEEVI STA CENTER - 436 EAST, PHASE 1, PLAT 17, AS RECORDED IN PLAT BOOK 45, PAGE 49, ALL OF THE PUBLIC RECORDS OF ORANGE COUNTY, FLORIDA

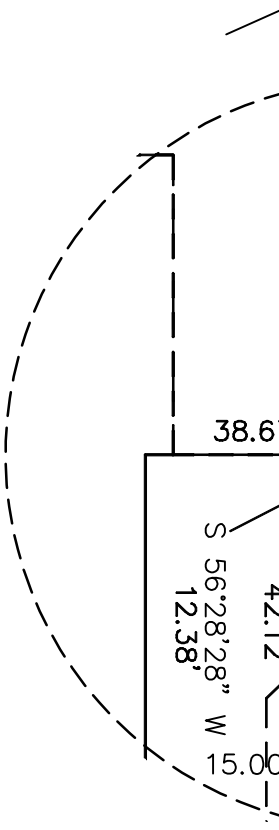
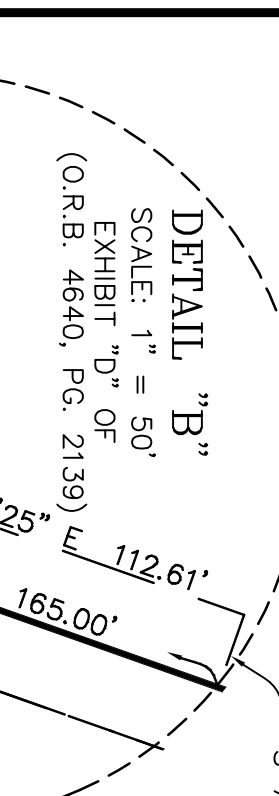
POINT OF COMMENCEMENT
SOUTH 1/4 CORNER OF SECTION 22,
TOWNSHIP 23 SOUTH, RANGE 30 EAST,
ORANGE COUNTY, FLORIDA
CERTIFIED CORNER RECORD #076063
NAIL & DISK "ORANGE COUNTY SURVEY
POINT" IN ASPHALT PAVEMENT

POINT OF SHEET 3 OF 6



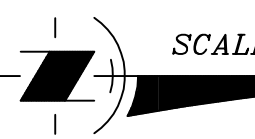
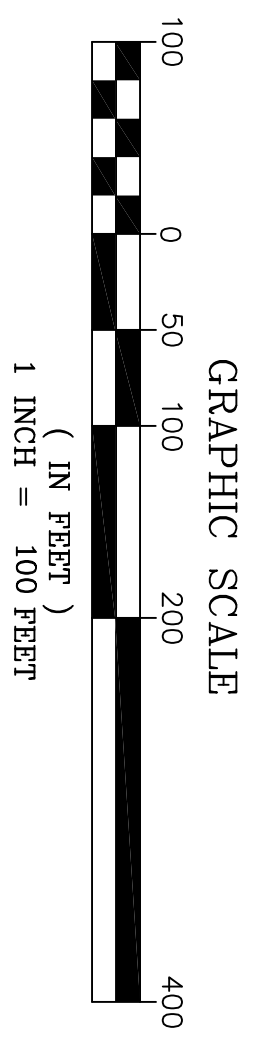
LINE TABLE

LINE	BEARING	LENGTH
L1	S00°00'00"E	37.29'
L2	S00°00'00"E	305.39'
L3	N90°00'00"W	78.00'
L4	S00°00'00"E	103.82'
L5	N70°06'56"W	72.81'
L6	N43°06'56"W	33.57'
L7	N19°34'42"E	94.18'
L8	N05°11'18"E	8.35'
L9	N41°22'33"W	87.30'
L10	N04°41'05"E	138.81'
L11	N90°00'00"E	46.92'
L12	S76°22'03"E	101.91'



CURVE TABLE

CURVE	RADIUS	LENGTH	DELTA	TANGENT	CHORD BEARING	CHORD DISTANCE
C2	50.00'	40.20'	46°03'38"	21.25'	N18°20'44"W	39.12'
C3	50.00'	74.45'	85°18'55"	46.07'	N47°20'32"E	67.76'



- SYMBOLS LEGEND
- - FOUND CONCRETE MONUMENT (IDENTIFICATION AS NOTED)
 - - SET CONCRETE MONUMENT (PRM POP LB3778)
 - - SET NAIL AND DISK OR IRON PIPE (PRM POP LB3778)
 - - FOUND NAIL AND DISK (IDENTIFICATION AS NOTED)
 - P.C., P.T., CHANGE IN DIRECTION, ETC. (NO CORNER SET)

10.00' WIDE EASEMENT FOR LANDSCAPING, SIDEWALKS/BIKEPATHS, UTILITIES, ACCESS CONTROL, TRAFFIC CONTROL DEVICES, SIGNAGE, LIGHTING AND OTHER PUBLIC PURPOSES. (O.R.B. 3576, PG. 1299)

40.00' WIDE JOINT USE DRIVEWAY/GROSS ACCESS EASEMENT (P.B. 31, PG. 137)

SEE DETAIL "B"

TAN. BRG. AT THIS POINT = N 60°50'51" W

22' WIDE EASEMENT FOR INGRESS AND EGRESS AND UTILITIES PURPOSES (O.R.B. 3682, PG. 1510)

SEE DETAIL "B"

DECLARATION OF CROSS-EASEMENT AGREEMENT (O.R.B. 4640, PG. 2139)

15' OUC UNDERGROUND EASEMENT (O.R.B. 5945, PG. 3522)

VACATED BY (O.R.B. 5945, PG. 3522)

APPROXIMATE LOCATION OF 15' OUC UNDERGROUND EASEMENT (O.R.B. 5945, PG. 3522)

TAN. BRG. AT THIS POINT = S 19°01'32" W

NOT INCLUDED LOT 1 PHASE 1 PLAT 10 (P.B. 31, PG. 137)

NOT PLATTED

CONSERVATION EASEMENT No. 2 TO THE STATE OF FLORIDA, DEPARTMENT OF ENVIRONMENTAL REGULATION (O.R.B. 3515, PG. 2020)

NOT PLATTED

NOT INCLUDED LOT 1 PHASE 1 PLAT 10 (P.B. 31, PG. 137)

NOT PLATTED

Tinklepaugh
SURVEYING SERVICES
850 COURTLAND STREET, SUITE A-2 • ORLANDO, FLORIDA 32804
TELEPHONE NO. (407) 282-0957 - LICENSED BUSINESS NO. 3778