



OSCEOLA ENGINEERS
INCORPORATED
1000 Florida Avenue
City of Salt Cloud
Florida 34769
Telephone: (407) 891-0462
Facsimile: (407) 891-9773

Delaney Commons

Development Plan Map



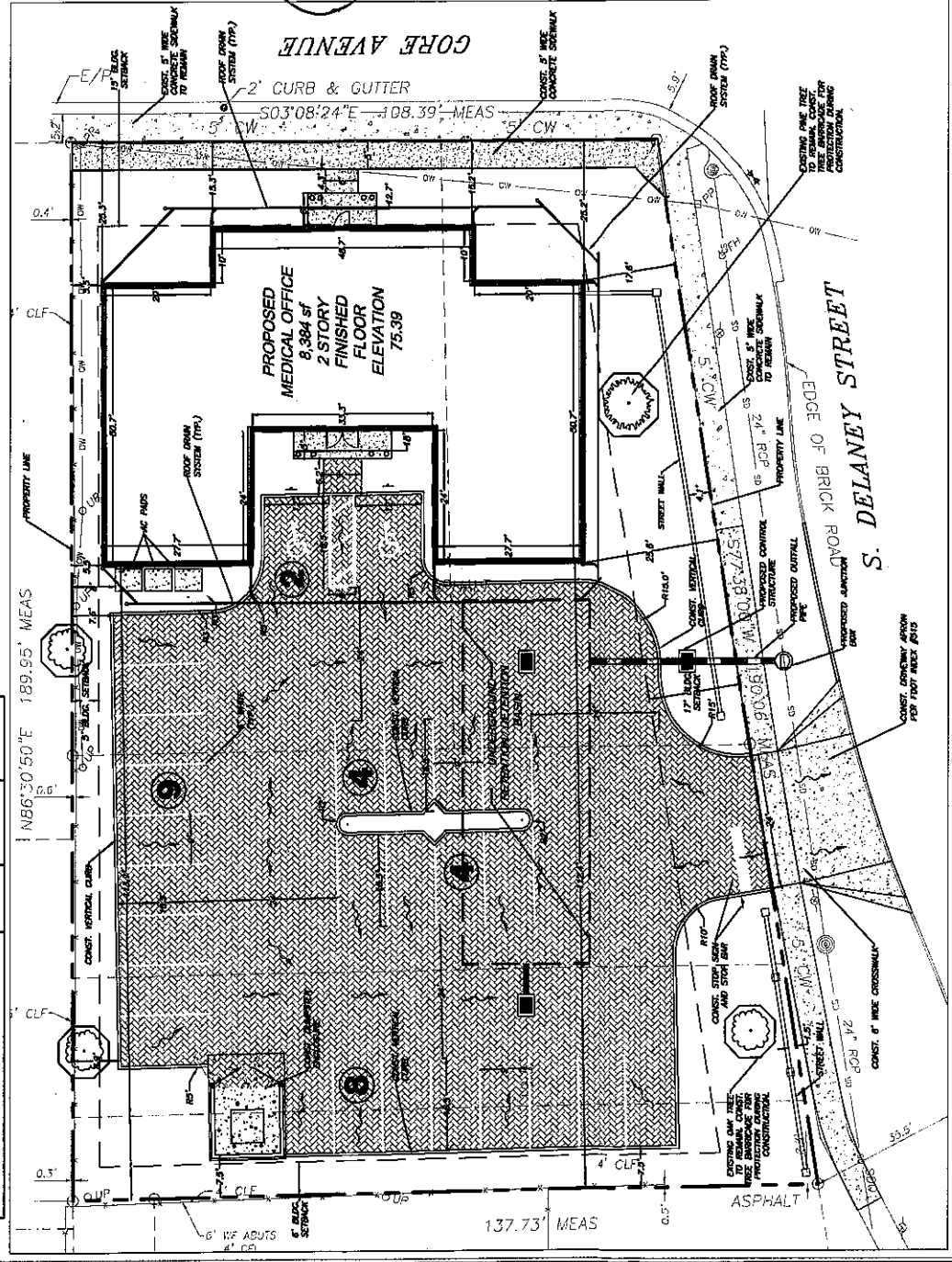
Scale: 1" = 20'
Date: / /
FK: / /

USE	Sq. Ft.	MINIMUM RATIO	MINIMUM SPACES REQUIRED	MAXIMUM RATIO	MAXIMUM SPACES PERMITTED
MEDICAL OFFICE	8,384	2.8/1000 Sq. Ft.	23	5.3/1000 Sq. Ft.	44
TOTAL REQUIRED			23		
TOTAL PROVIDED			27		

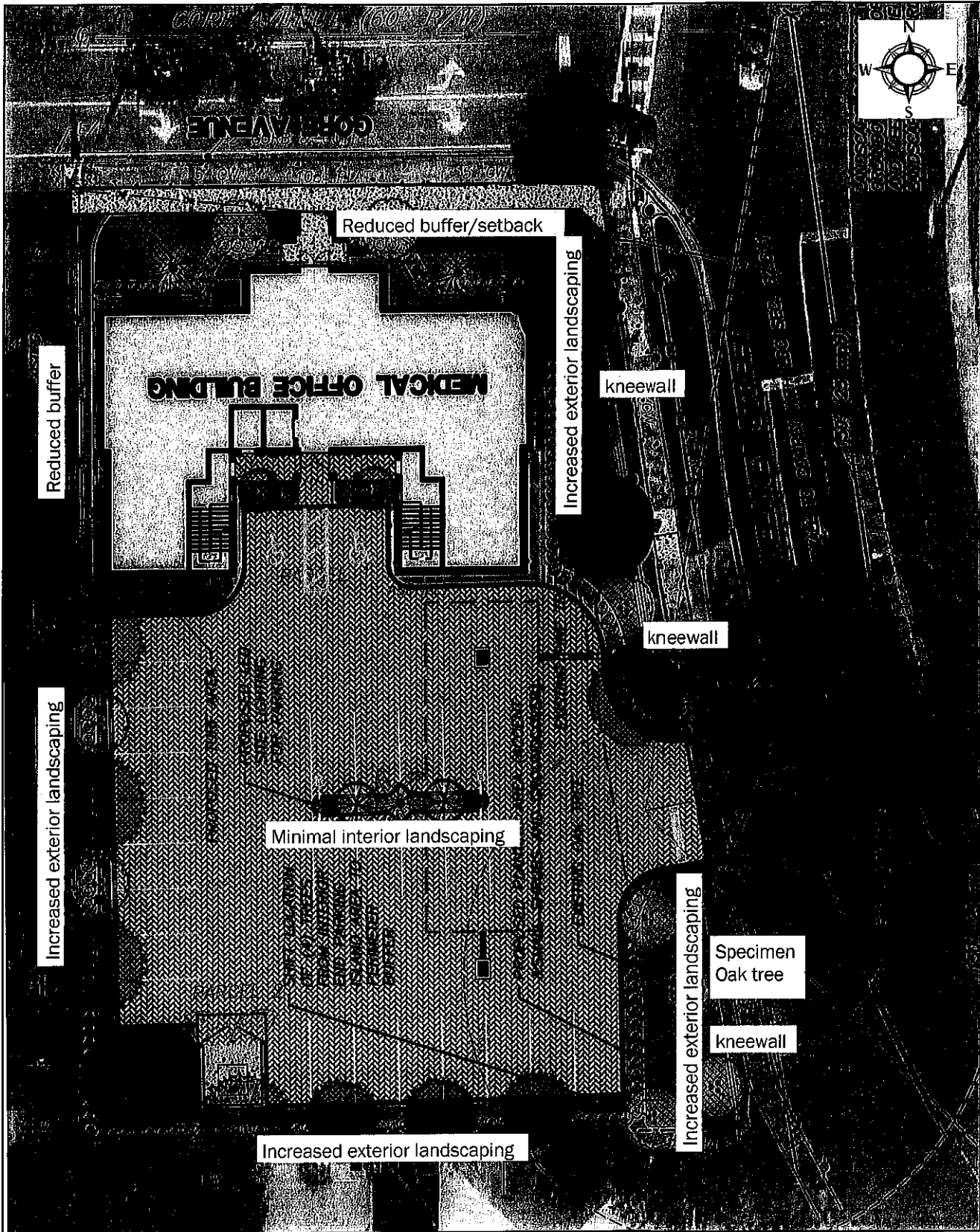
SETBACKS AND HEIGHT REQUIREMENTS	EXIST. PD	PROP. PD
FRONT SETBACK (CORE ST)	25 ft	15 ft
SIDE SETBACK	10 ft	5 ft
STREET SIDE SETBACK (DELANEY ST)	25 ft	17 ft
REAR SETBACK	30 ft	30 ft
HEIGHT	30 ft	30 ft

**SAME AS EXISTING PD

BRICK PAVERS OR STAMPED CONCRETE



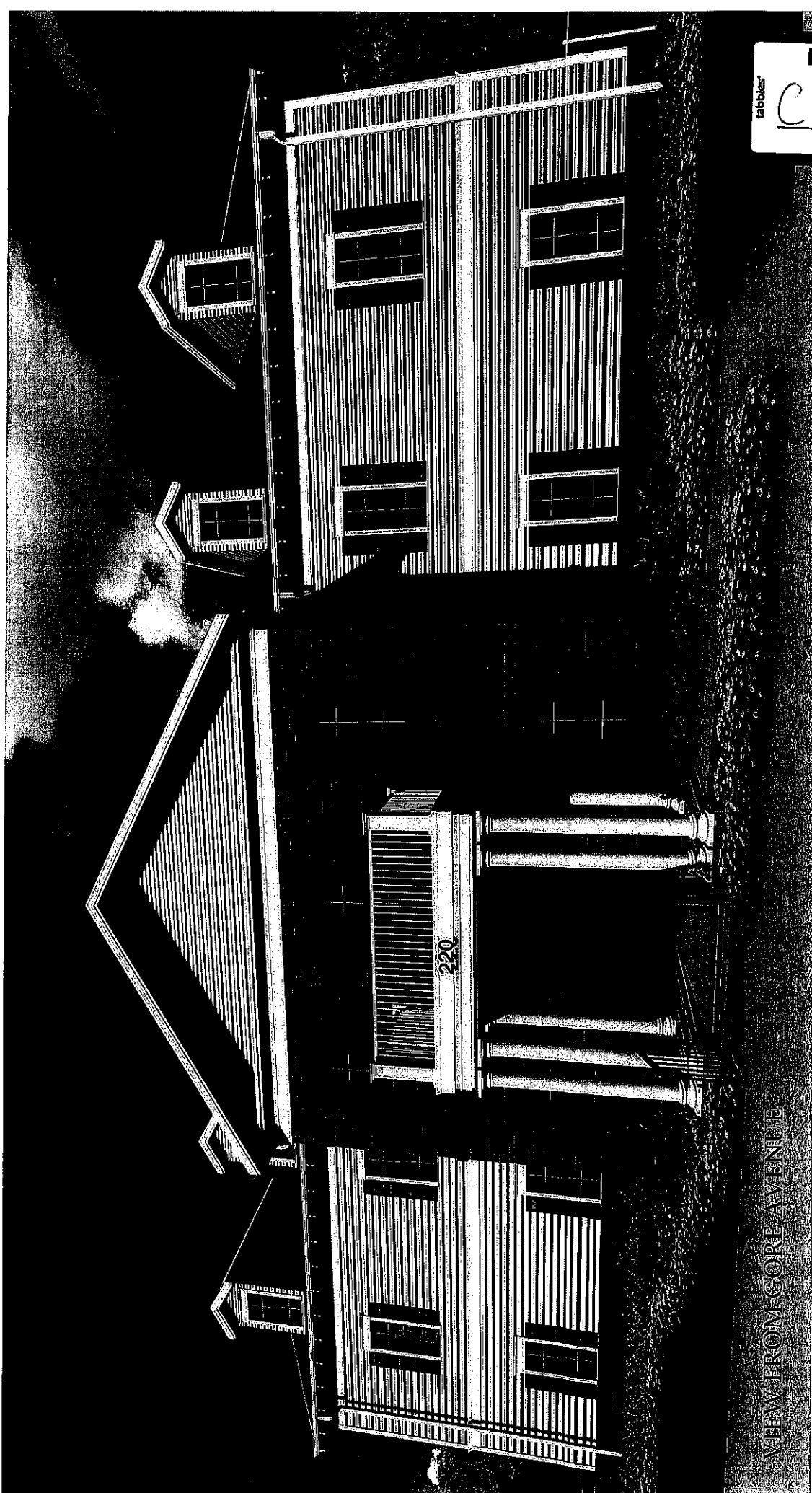
LANDSCAPE PLAN



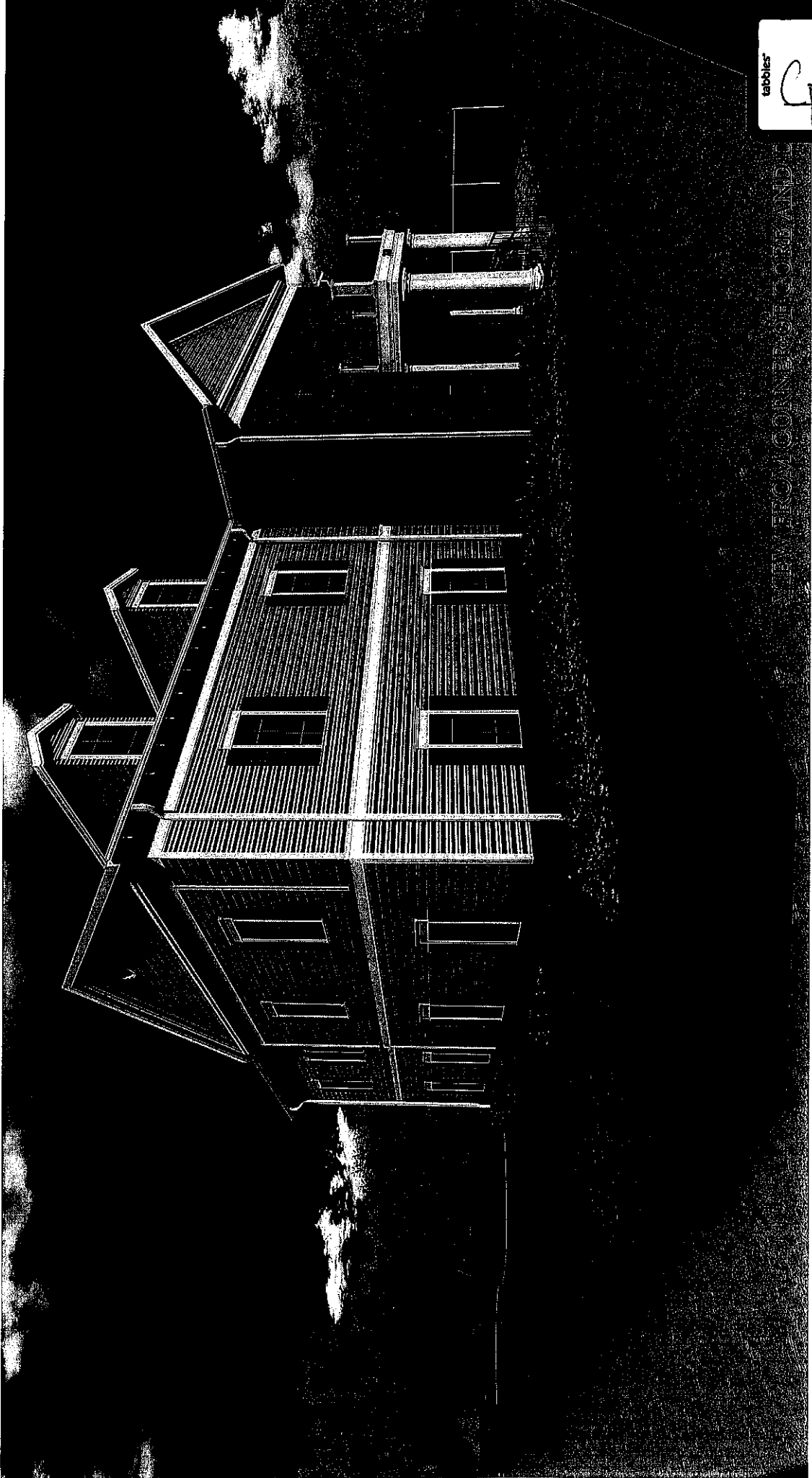
EXHIBIT

tabbles

Cp3of7



VIEW FROM GORE AVENUE

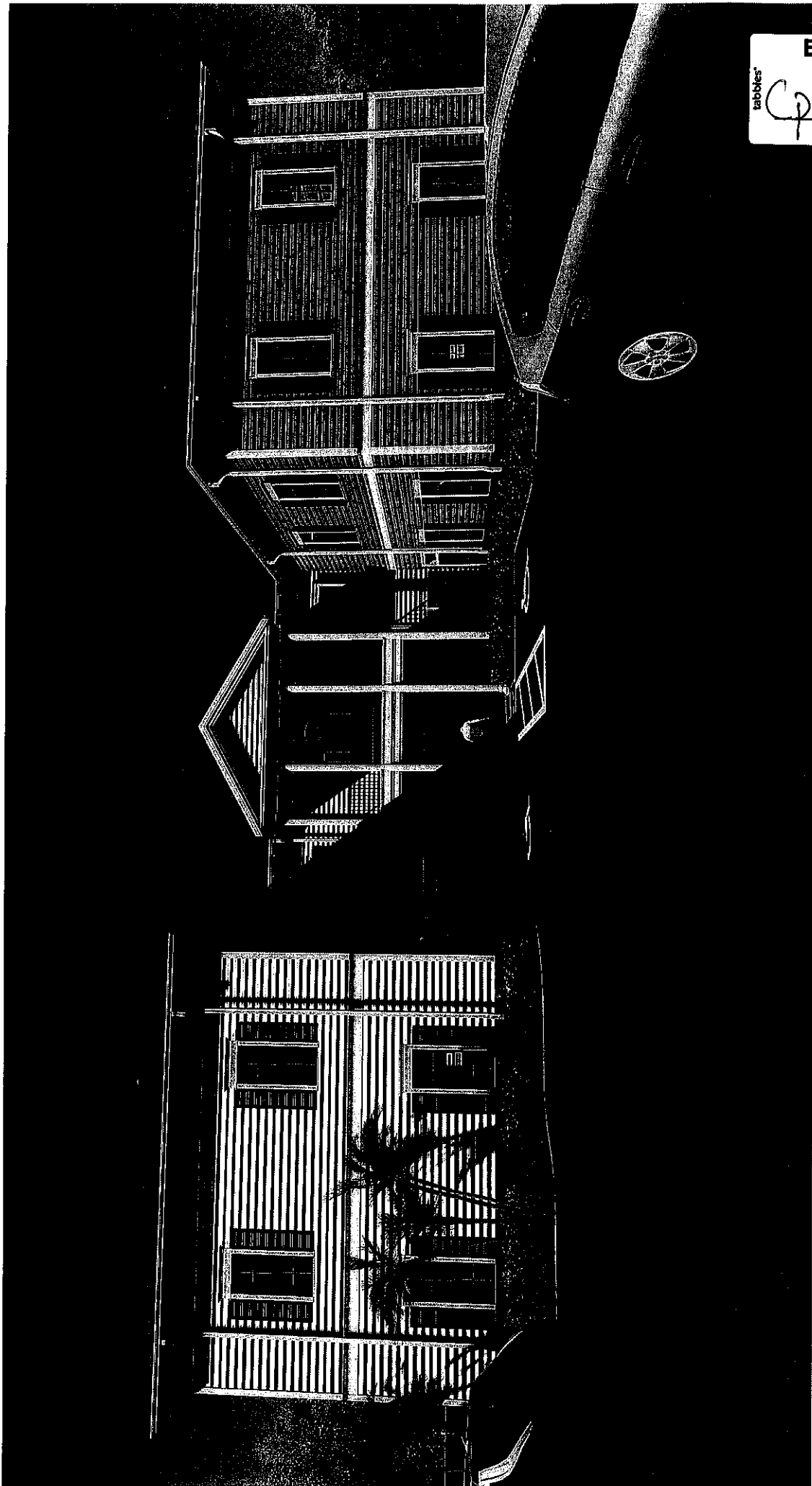


FROM COURTESY OF ORLAND

EXHIBIT

tabbles

Cp 5 of 7



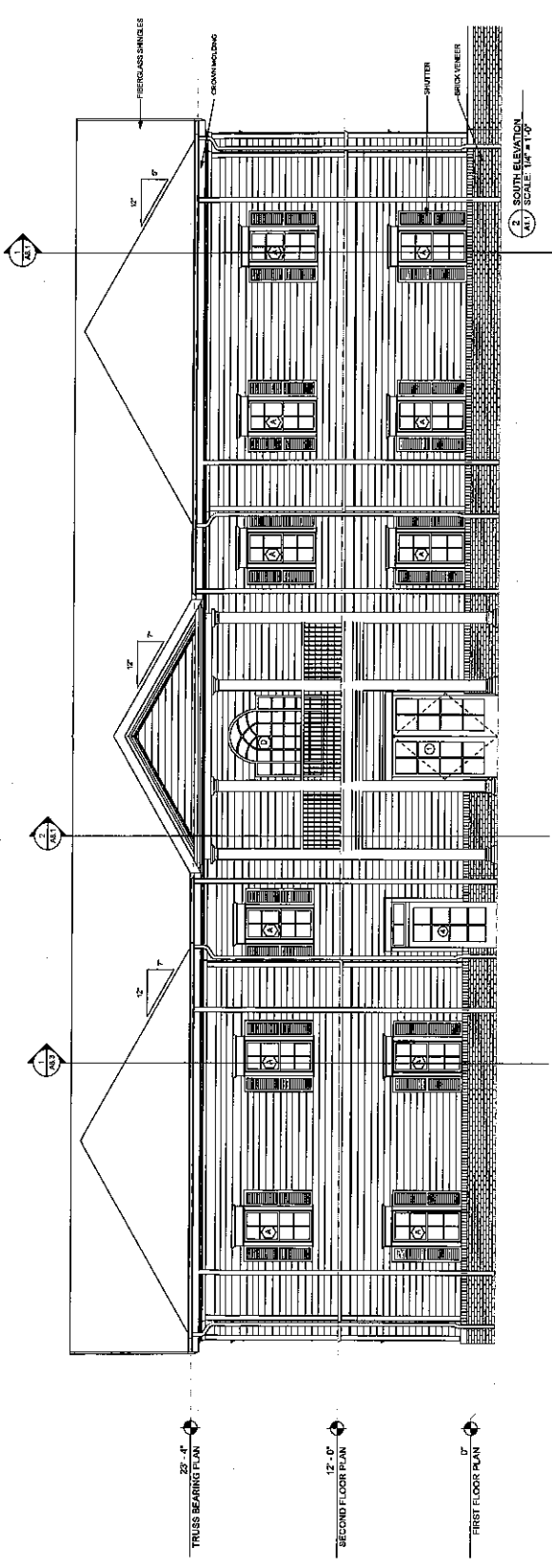
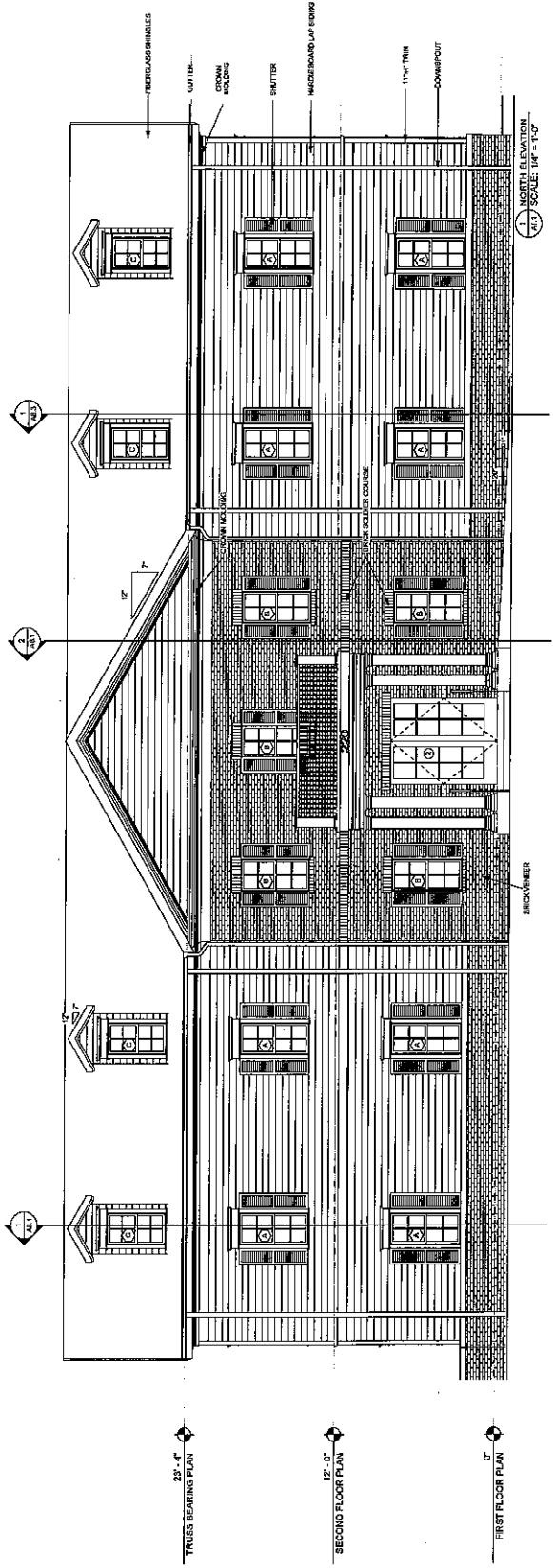
tabbies
EXHIBIT
Cp 6 of 7

DR. AKPEKE
 220 E GORE STREET
 ORLANDO, FLORIDA

Approved By:
 David L. Burgess
 AIR 0008045

BUMPUS AND ASSOCIATES, INC.
 ARCHITECTS
 220 E GORE STREET
 ORLANDO, FLORIDA 32801
 AIR 0008045

DATE	BY

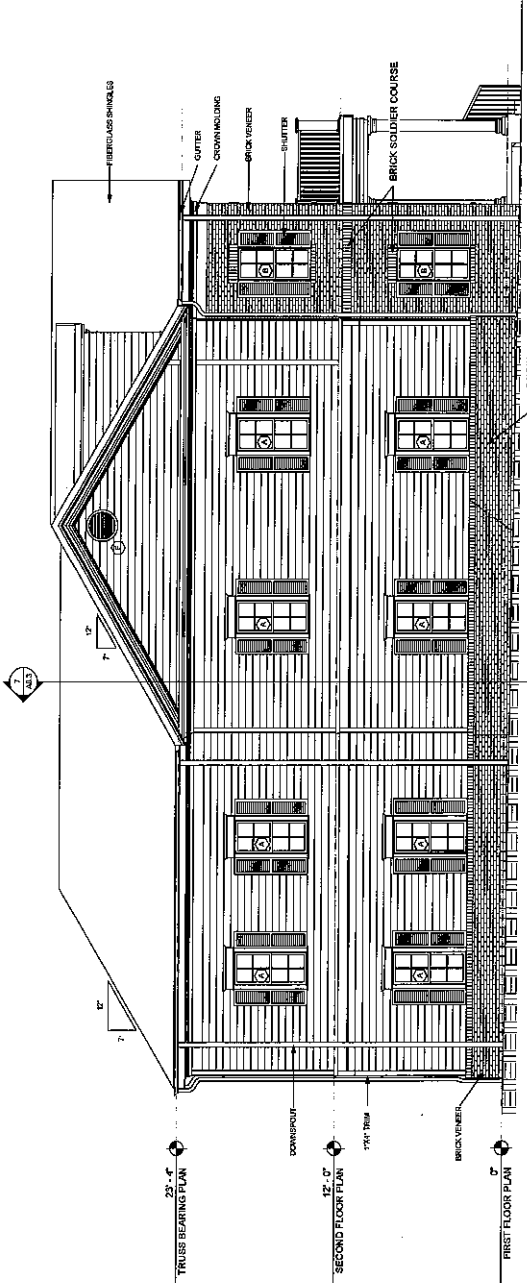


DR. AKPEKE
 220 E GORE STREET
 ORLANDO, FLORIDA

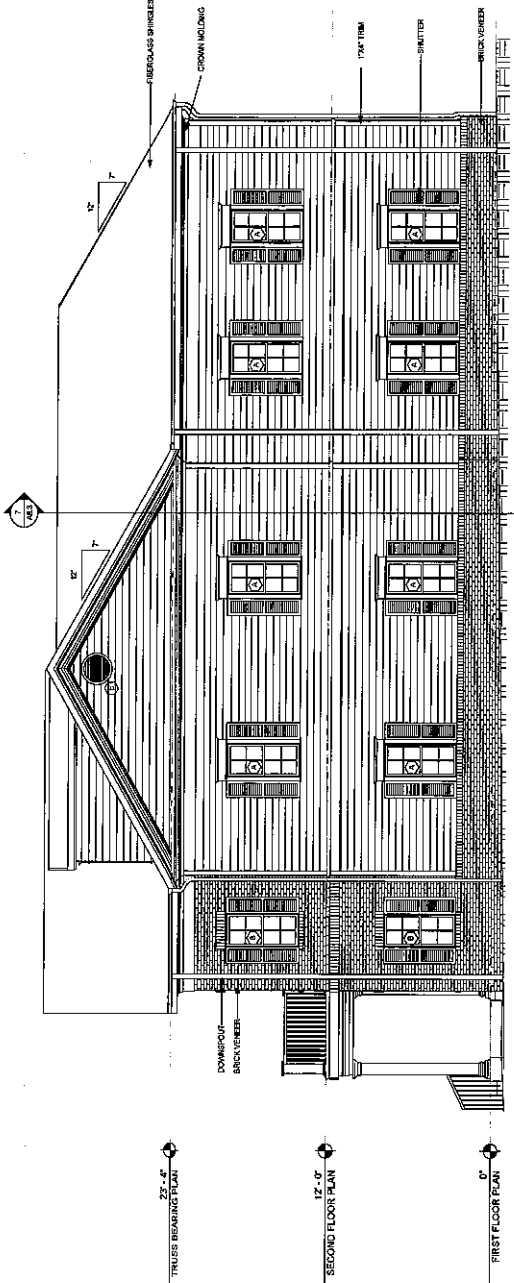
Approved By: _____
 David L. Bumpas
 AIA 000048

BUMPAS AND ASSOCIATES, INC.
 ARCHITECTS/INTERIORS DESIGNERS
 1000 UNIVERSITY AVENUE, SUITE 100
 ORLANDO, FLORIDA 32801
 Phone: (407) 241-1111
 Fax: (407) 241-1112

DATE: 01/11/11	REVISIONS:



1. EAST ELEVATION
 SCALE: 1/4" = 1'-0"



2. WEST ELEVATION
 SCALE: 1/4" = 1'-0"