

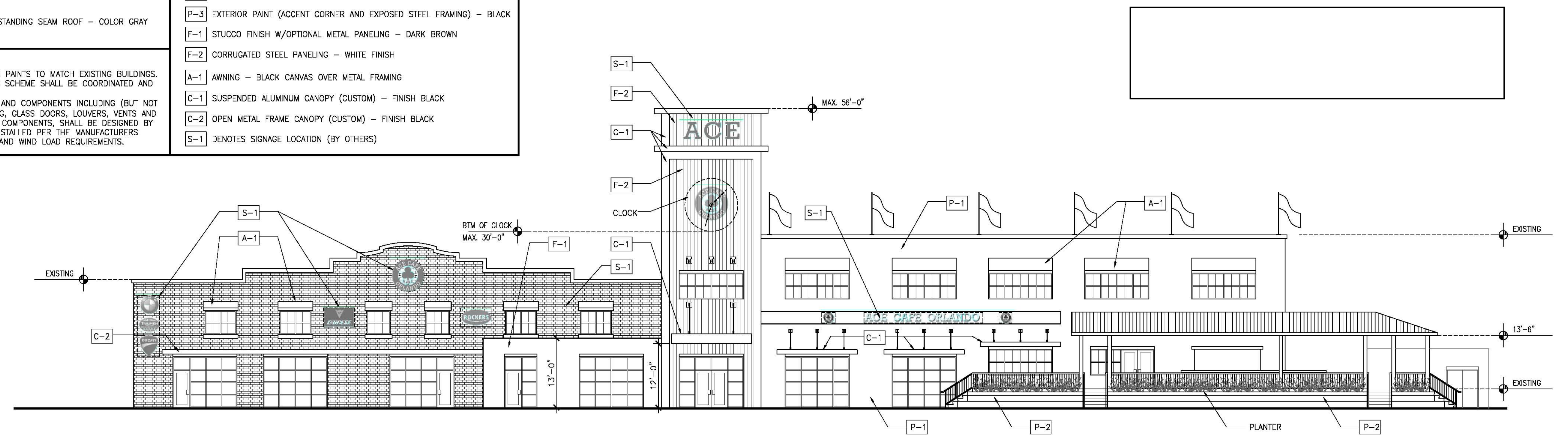
**EXTERIOR FINISH NOTES**

 DENOTES EXISTING BRICK FINISH TO REMAIN. EXTERIOR BRICK FACE TO BE REPAIRED TO ORIGINAL CONDITION WHERE REQUIRED.

 DENOTES STANDING SEAM ROOF - COLOR GRAY

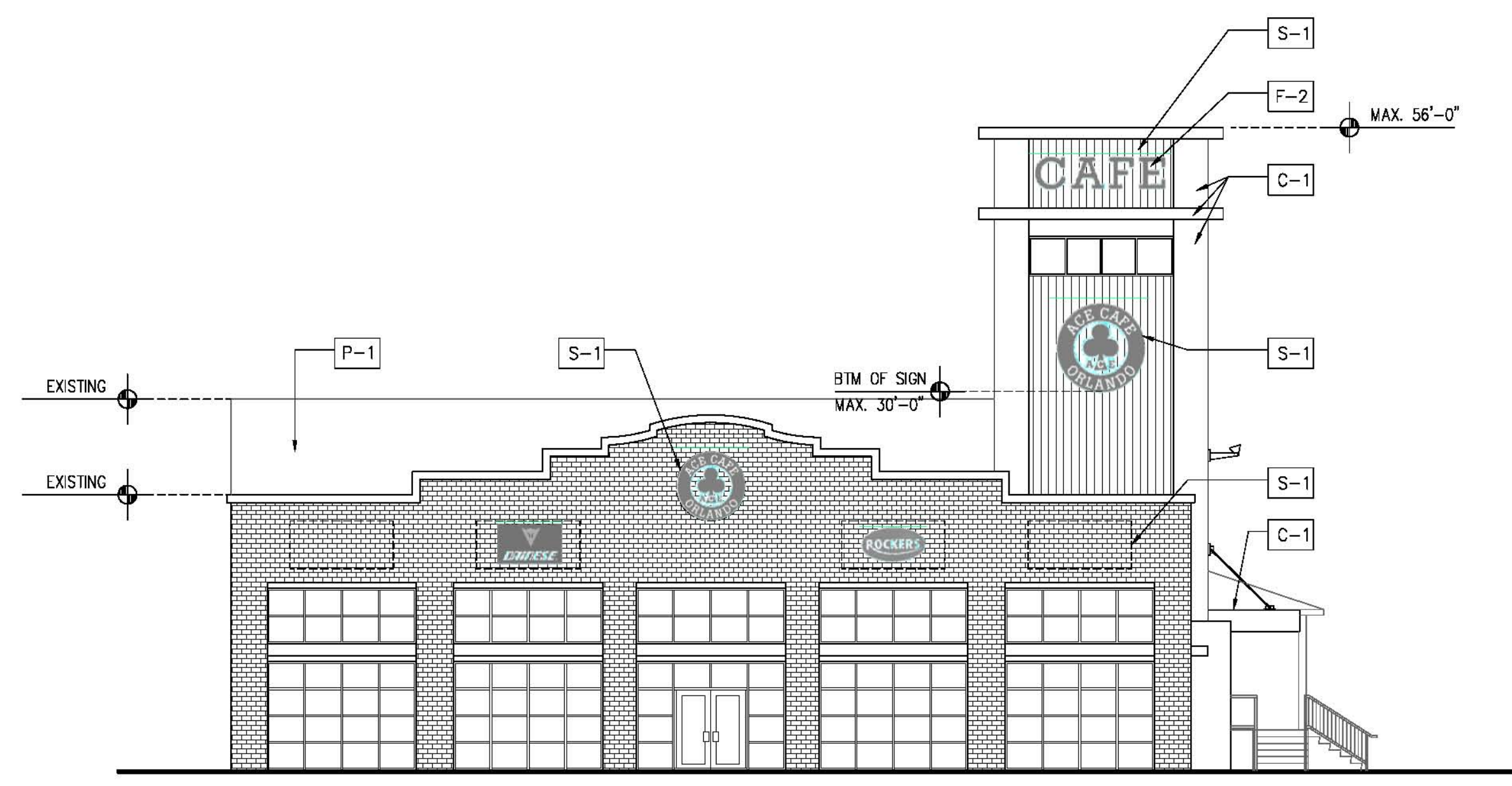
- P-1 EXTERIOR PAINT OVER EXISTING EXTERIOR CMU OR CONCRETE - WHITE
- P-2 EXTERIOR PAINT OVER EXISTING CMU OR CONCRETE - WARM GRAY
- P-3 EXTERIOR PAINT (ACCENT CORNER AND EXPOSED STEEL FRAMING) - BLACK
- F-1 STUCCO FINISH W/OPTIONAL METAL PANELING - DARK BROWN
- F-2 CORRUGATED STEEL PANELING - WHITE FINISH
- A-1 AWNING - BLACK CANVAS OVER METAL FRAMING
- C-1 SUSPENDED ALUMINUM CANOPY (CUSTOM) - FINISH BLACK
- C-2 OPEN METAL FRAME CANOPY (CUSTOM) - FINISH BLACK
- S-1 DENOTES SIGNAGE LOCATION (BY OTHERS)

**GENERAL NOTES:**  
 1. ALL BUILDING FINISHES AND PAINTS TO MATCH EXISTING BUILDINGS. FINAL PAINT SCHEDULE AND SCHEME SHALL BE COORDINATED AND APPROVED BY OWNER.  
 2. ALL BUILDING STRUCTURES AND COMPONENTS INCLUDING (BUT NOT LIMITED TO) DOORS, GLAZING, GLASS DOORS, LOUVERS, VENTS AND EXTERIOR DECORATIVE TRIM COMPONENTS, SHALL BE DESIGNED BY THE MANUFACTURER AND INSTALLED PER THE MANUFACTURERS DESIGN TO MEET THE FBC AND WIND LOAD REQUIREMENTS.



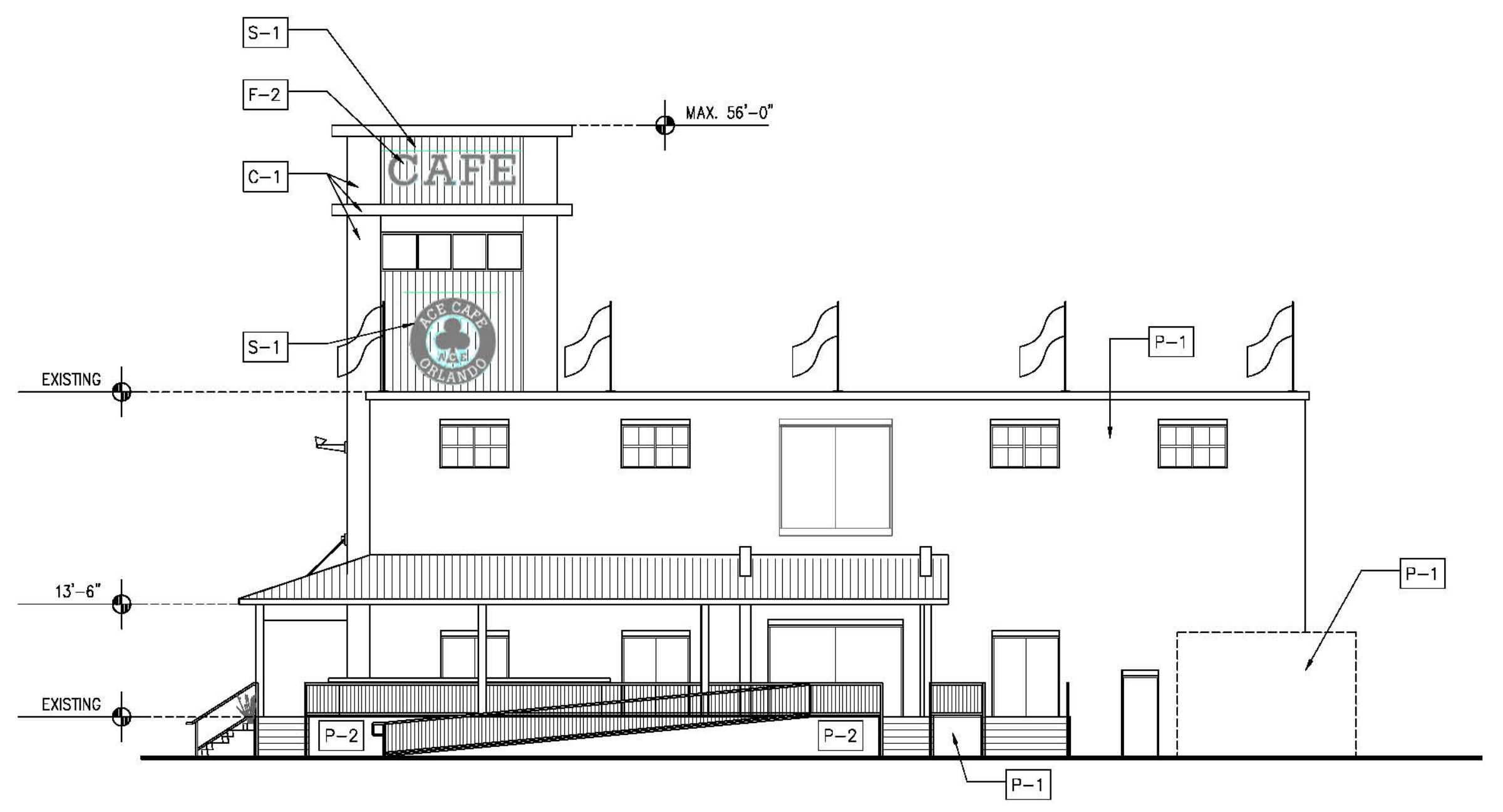
**F1 EAST ELEVATION**

3/32" - 1'-0"



**A1 NORTH ELEVATION**

3/32" - 1'-0"

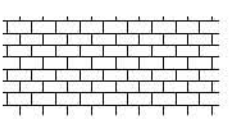
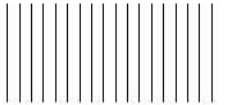


**A8 SOUTH ELEVATION**

3/32" - 1'-0"

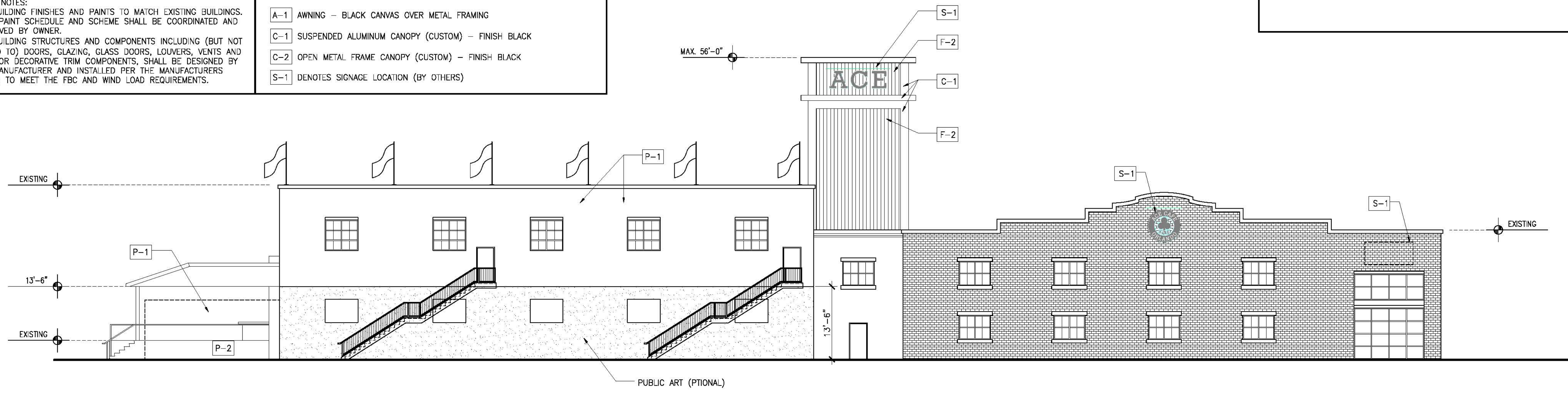


**EXTERIOR FINISH NOTES**

 DENOTES EXISTING BRICK FINISH TO REMAIN. EXTERIOR BRICK FACE TO BE REPAIRED TO ORIGINAL CONDITION WHERE REQUIRED.  
 DENOTES STANDING SEAM ROOF - COLOR GRAY

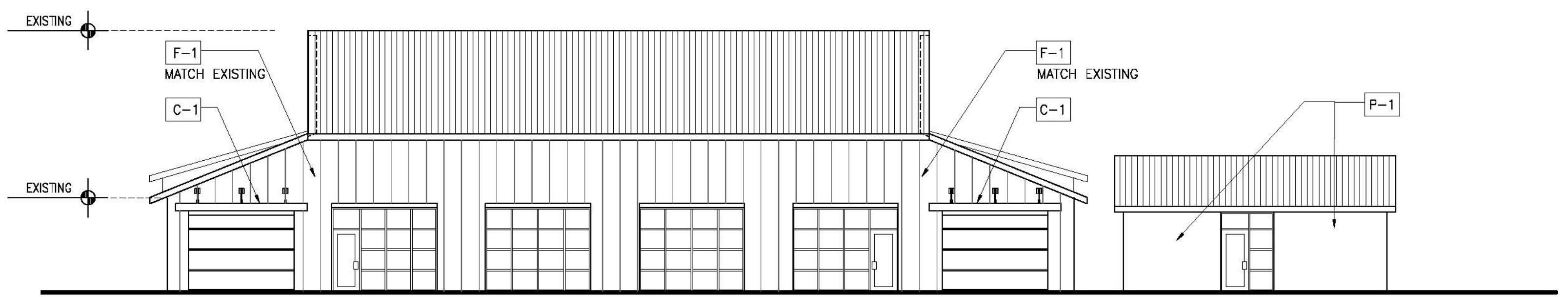
- P-1 EXTERIOR PAINT OVER EXISTING EXTERIOR CMU OR CONCRETE - WHITE
- P-2 EXTERIOR PAINT OVER EXISTING CMU OR CONCRETE - WARM GRAY
- P-3 EXTERIOR PAINT (ACCENT CORNER AND EXPOSED STEEL FRAMING) - BLACK
- F-1 STUCCO FINISH W/OPTIONAL METAL PANELING - DARK BROWN
- F-2 CORRUGATED STEEL PANELING - WHITE FINISH
- A-1 AWNING - BLACK CANVAS OVER METAL FRAMING
- C-1 SUSPENDED ALUMINUM CANOPY (CUSTOM) - FINISH BLACK
- C-2 OPEN METAL FRAME CANOPY (CUSTOM) - FINISH BLACK
- S-1 DENOTES SIGNAGE LOCATION (BY OTHERS)

**GENERAL NOTES:**  
 1. ALL BUILDING FINISHES AND PAINTS TO MATCH EXISTING BUILDINGS. FINAL PAINT SCHEDULE AND SCHEME SHALL BE COORDINATED AND APPROVED BY OWNER.  
 2. ALL BUILDING STRUCTURES AND COMPONENTS INCLUDING (BUT NOT LIMITED TO) DOORS, GLAZING, GLASS DOORS, LOUVERS, VENTS AND EXTERIOR DECORATIVE TRIM COMPONENTS, SHALL BE DESIGNED BY THE MANUFACTURER AND INSTALLED PER THE MANUFACTURERS DESIGN TO MEET THE FBC AND WIND LOAD REQUIREMENTS.



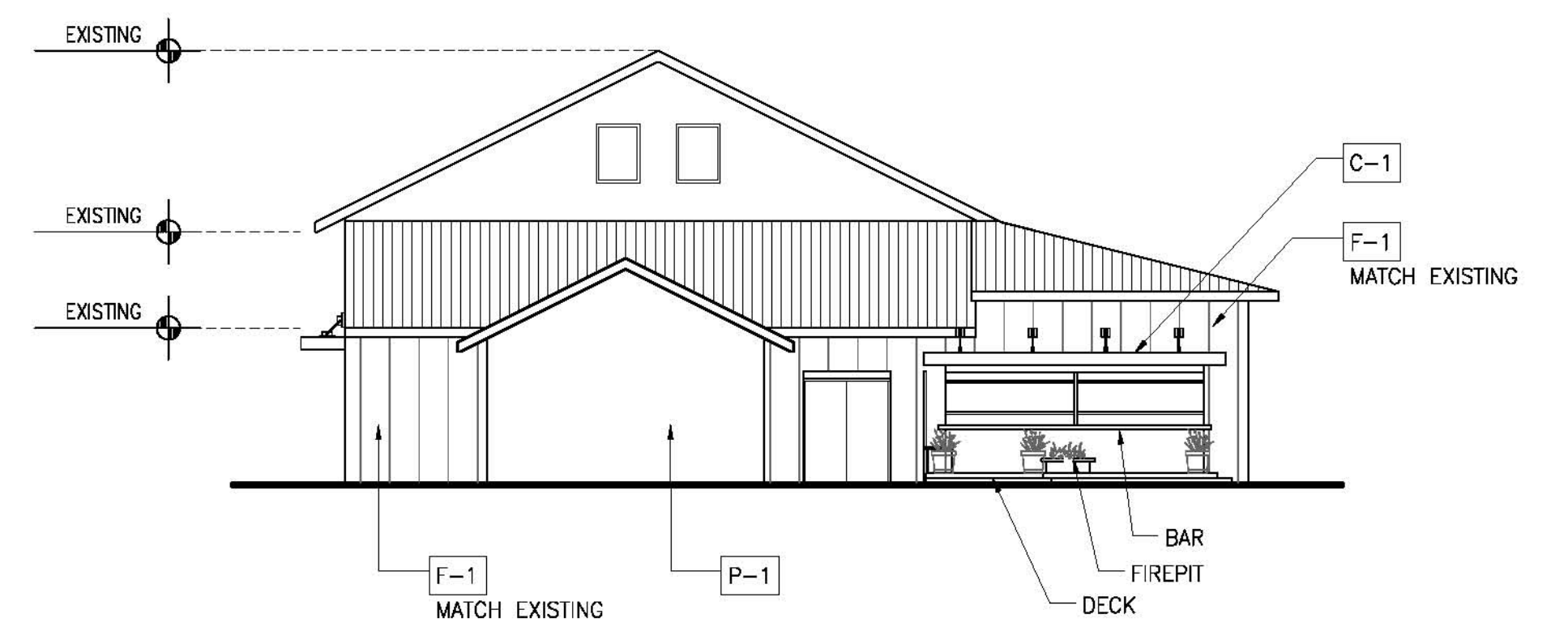
**F1 WEST ELEVATION**

3/32" = 1'-0"



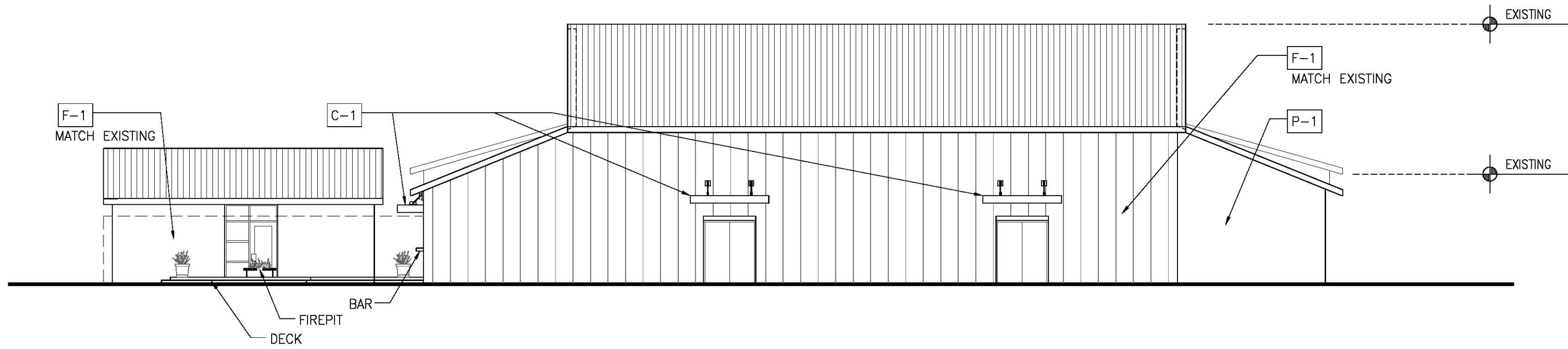
**A1 WEST ELEVATION**

3/32" = 1'-0"



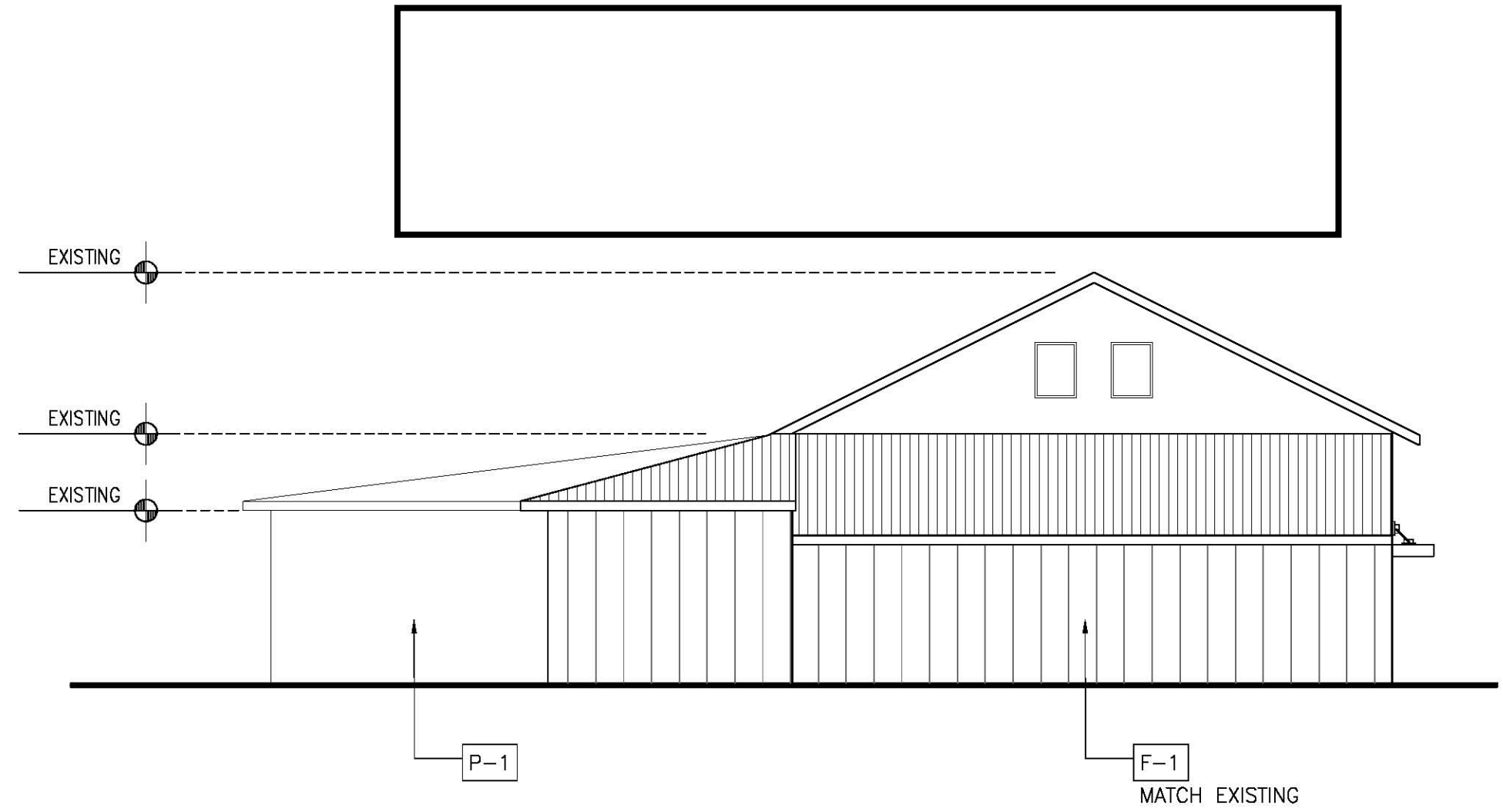
**A9 SOUTH ELEVATION**

3/32" = 1'-0"



**EAST ELEVATION**

1-0'



**SOUTH ELEVATION**

A10

3/32' = 1-0'

**EXTERIOR FINISH NOTES**

 DENOTES EXISTING BRICK FINISH TO REMAIN. EXTERIOR BRICK FACE TO BE REPAIRED TO ORIGINAL CONDITION WHERE REQUIRED.

 DENOTES STANDING SEAM ROOF - COLOR GRAY

- GENERAL NOTES:
1. ALL BUILDING FINISHES AND PAINTS TO MATCH EXISTING BUILDINGS. FINAL PAINT SCHEDULE AND SCHEME SHALL BE COORDINATED AND APPROVED BY OWNER.
  2. ALL BUILDING STRUCTURES AND COMPONENTS INCLUDING (BUT NOT LIMITED TO) DOORS, GLAZING, GLASS DOORS, LOUVERS, VENTS AND EXTERIOR DECORATIVE TRIM COMPONENTS, SHALL BE DESIGNED BY THE MANUFACTURER AND INSTALLED PER THE MANUFACTURERS DESIGN TO MEET THE FBC AND WIND LOAD REQUIREMENTS.

- P-1** EXTERIOR PAINT OVER EXISTING EXTERIOR CMU OR CONCRETE - WHITE
- P-2** EXTERIOR PAINT OVER EXISTING CMU OR CONCRETE - WARM GRAY
- P-3** EXTERIOR PAINT (ACCENT CORNER AND EXPOSED STEEL FRAMING) - BLACK
- F-1** STUCCO FINISH W/OPTIONAL METAL PANELING - DARK BROWN
- F-2** CORRUGATED STEEL PANELING - WHITE FINISH
- A-1** AWNING - BLACK CANVAS OVER METAL FRAMING
- C-1** SUSPENDED ALUMINUM CANOPY (CUSTOM) - FINISH BLACK
- C-2** OPEN METAL FRAME CANOPY (CUSTOM) - FINISH BLACK
- S-1** DENOTES SIGNAGE LOCATION (BY OTHERS)