

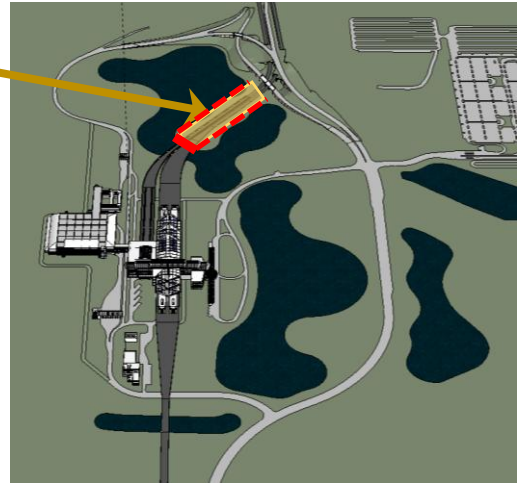
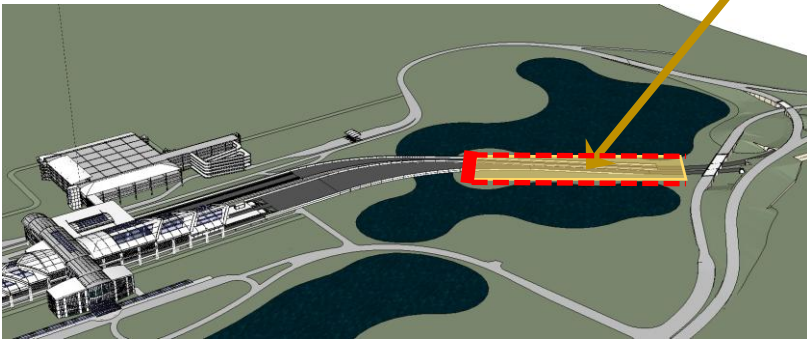
EXHIBIT A

Embankment Funding Agreement September 10, 2014

The North Embankment will include two reinforced earth walls and a bridge abutment on the end closest to the South Airport APM station and Intermodal terminal Facility. The embankment will be constructed for shared use by the APM, intercity rail and light rail systems. In the event that only the embankment for the APM is built first, Exhibit B provides a cross section view of the North Embankment illustrating the phased construction responsibilities for the project.

The South Embankment will also include two reinforced earth walls (each +/- 50 ft. long) and a bridge abutment on the end closest to the South Airport APM station and Intermodal terminal Facility. The South Embankment will only be used by future intercity rail. The two reinforced earth walls and partial embankment will be limited to the minimum needed to support the abutment.

North Embankment



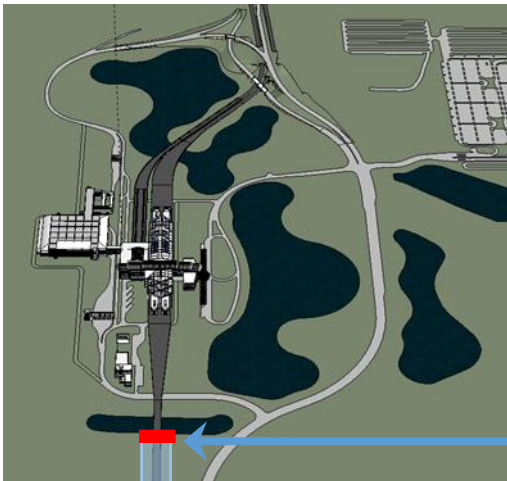
Abutment Locations



Reinforced Earth Walls



North Embankment



South Abutment and Partial RE Walls & Embankment

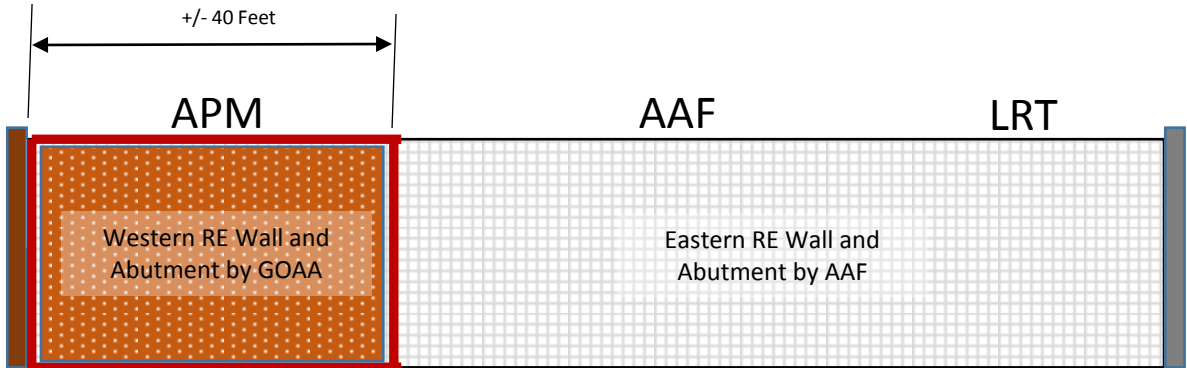
EXHIBIT B

Embankment Funding Agreement

September 10, 2014

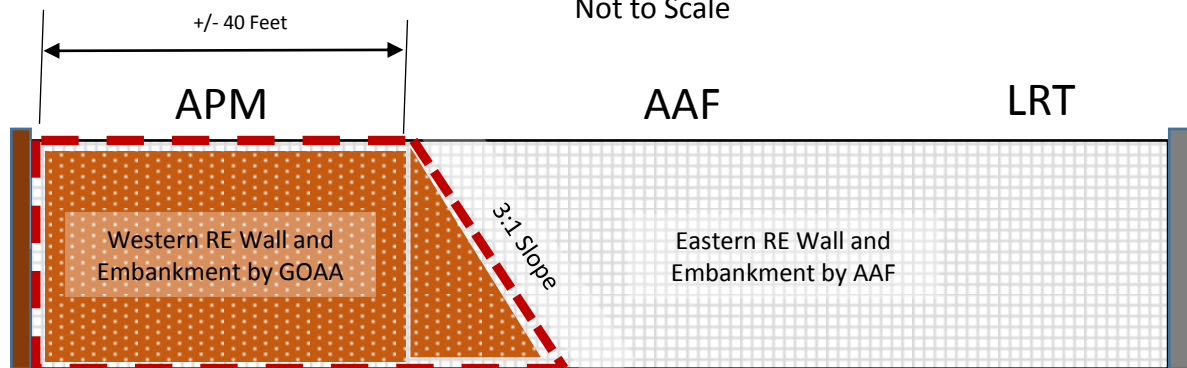
In the event AAF fails to provide funds as specified in the agreement, the Authority may, but is not obligated to, construct the western reinforced earth wall, the APM abutment and provide sufficient fill material for the APM (the “Alternate Embankment Work”). The Alternate Embankment Work is described in further detail below.

AAF shall be required to build the eastern reinforced earth wall, the AAF and light rail abutment, provide fill material for AAF and light rail, and build the south abutment.



View of Abutment Looking North

Not to Scale



View of Embankment Behind Abutment Looking North

Not to Scale