

From surveyor January 7, 2004

Original main portion of approved DRI Description	456.2476
together with Lot 2 and Lot 7 Block 13	9.17
also together with portion of NW 1/4 sec 26 (AKA old tract 5)	0.86
	466.2776

Additional legals added 03/03/03 to original DRI

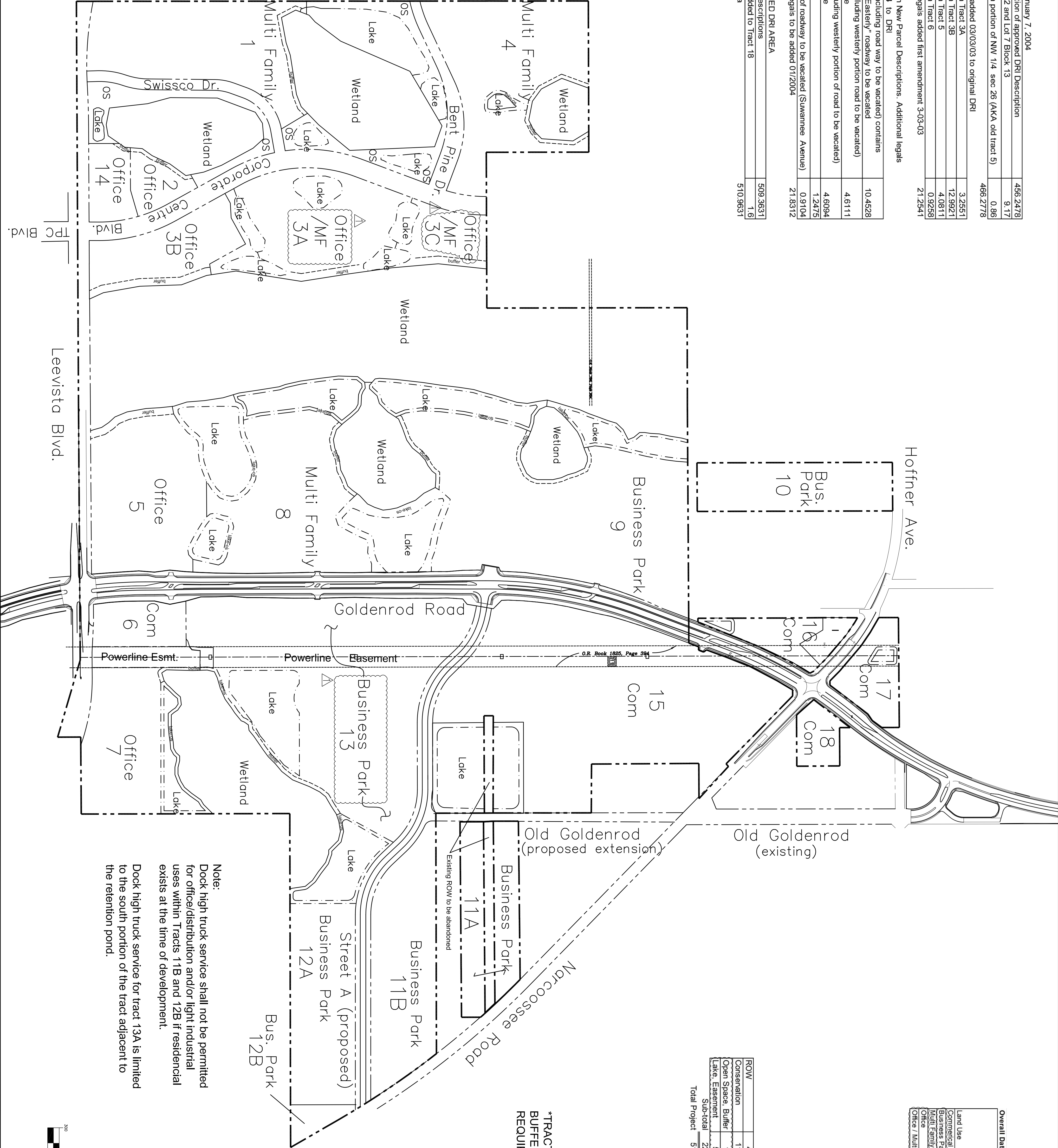
also together with Tract 3A	3.2551
also together with Tract 3B	12.9921
also together with Tract 5	4.0811
also together with Tract 6	0.9258
ACRES of DRI Legals added first amendment 3-03-03	21.2541

Also together with New Parcel Descriptions. Additional legals

proposed 01/2004 to DRI

Tract C1 (BMZ including road way to be vacated) contains	10.4528
1.7051 acres of "Easterly" roadway to be vacated	
Tract C2 (not including westerly portion road to be vacated)	4.6111
Suwannee Avenue	
Tract C3 (not including westerly portion of road to be vacated)	4.6094
Suwannee Avenue	1.2475
Tract C4	0.9104
Westerly portion of roadway to be vacated (Suwannee Avenue)	0.9104
ACRES of DRI Legals to be added 01/2004	21.8312

TOTAL PROPOSED DRI AREA	509.3631
Total by Legal Descriptions	1.6
Additional land added to Tract 18	
Total Project Area	510.9631



Overall Data Table		
Land Use	Proposed Acres	Proposed Units
Commercial	56.5	513,000 sf
Business Park	116.8	1,167,725 sf
Multi-Family	50.8	1,040 DU
Office	40.7	489,332 sf
Office / Multi-Family (Tracts 3A & 3C)	19.6	409 DU or 207,645 sf Office)
Sub-total	284.4	

Land Use By Lot			
Land Use	Lots	Acres	
Multi-family	1	16.0	
Office	2	2.0	
Office / Multi-family	3	13.0	
Office / Multi-family	3	12.3	
Office / Multi-family	3	6.9	
Multi-family	4	17.8	
Office	5	15.5	
Commercial	6	4.0	
Office	7	12.8	
Multi-family	8	17.0	
Business park	9	33.5	
Business park	10	9.2	
Business park	11	8.6	
Business park	11	14.1	
Business park	12	12.8	
Business park	12	1.5	
Business park	13	37.7	
Lake, Easement	14	3.7	
Office	15	42.0	
Commercial	16	4.0	
Commercial	17	4.2	
Commercial	18	2.3	
Sub-total		284.4	
Total Project		510.9	

*TRACTS 3A & 3C INCLUDE 1.2 AC OF BUFFERS. LAKE AREA WILL BE AS REQUIRED FOR SJRWMD.

