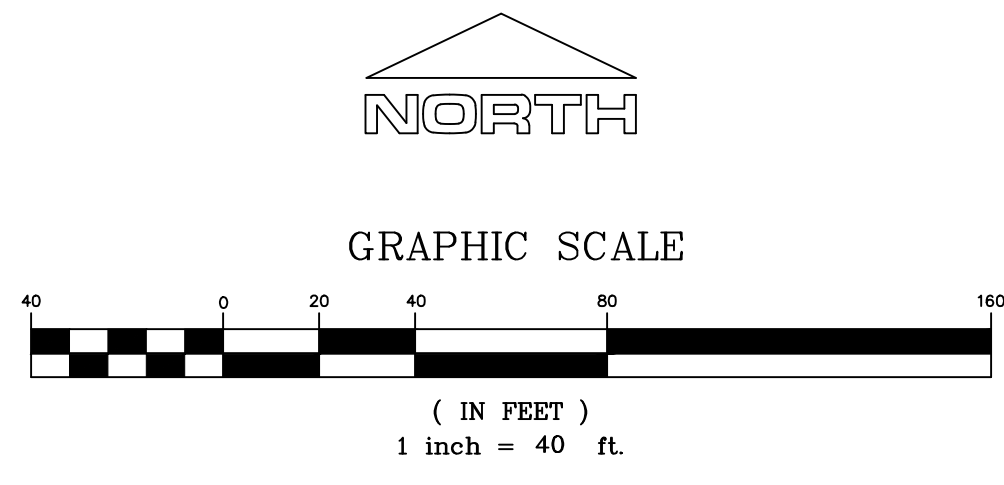
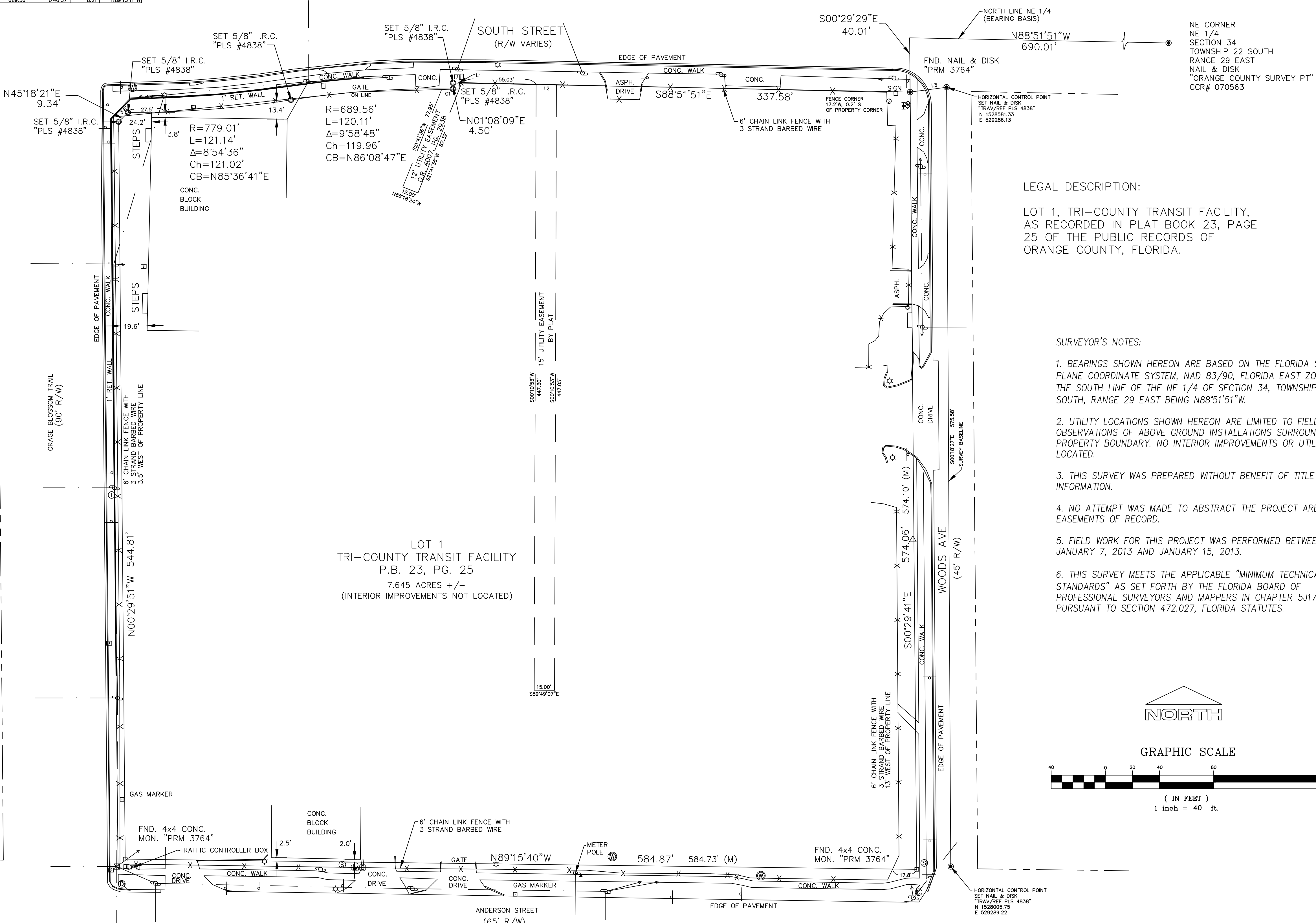


LINE	LENGTH	BEARING
L1	8.31'	S88°51'51"W
L2	15.00'	S88°51'51"W
L3	27.19'	N82°32'22"E

CURVE	LENGTH	RADIUS	DELTA	CHORD	CH. BEARING
C1	8.21'	689.56'	2°40'57"	8.21'	N82°31'11"W

- ABBREVIATIONS:
- CONC. CONCRETE
  - RET. RETAINING
  - I.R.C. IRON ROD & CAP
  - MON. MONUMENT
  - R/W RIGHT OF WAY
  - O.R. OFFICIAL RECORDS BOOK
  - P.G. PAGE
  - P.B. PLAT BOOK
  - FND. FOUND
  - A/C AIR CONDITIONER
  - R RADIUS
  - Δ CENTRAL ANGLE (DELTA)
  - L ARC LENGTH
  - Ch CHORD LENGTH
  - CB CHORD BEARING
  - (P) PLAT DISTANCE
  - (M) MEASURED DISTANCE

SYMBOL LEGEND	
	UTILITY POLE
	STORM DRAINAGE MANHOLE
	GUY ANCHOR
	SANITARY SEWER MANHOLE
	SIGN
	TELEPHONE RISER
	LIGHT POLE
	WATER METER
	ELECTRIC SERVICE
	ELECTRIC BOX
	GAS VALVE
	TELEPHONE MANHOLE
	MAST ARM POLE
	CLEAN OUT
	BACKFLOW PREVENTER
	MONITORING WELL



MICHAEL S. ROBINSON, P.L.S. #4259  
NOT VALID WITHOUT SIGNATURE AND THE ORIGINAL  
RAISED SEAL OF A FLORIDA LICENSED SURVEYOR  
AND MAPPER.

PREPARED FOR:  
**AMEC**  
BOUNDARY SURVEY  
**TRI-COUNTY TRANSIT FACILITY**

**BUCHHEIT ASSOCIATES, INC.**  
SURVEYORS & MAPPERS  
LB # 6167  
427 CenterPointe Circle, Suite 1811  
Altamonte Springs, Florida 32701  
(407) 331-0505 Fax: (407) 331-3266

PROJ. NO.	2110004-0003
SCALE	1"=40'
SURVEY DATE:	1/15/2013
REVISIONS:	
Rev. Geometry	1/24/2013
FLD BK. 2009/05	PG. 29-39
SHEET	1 OF 1