

# LEGAL DESCRIPTION

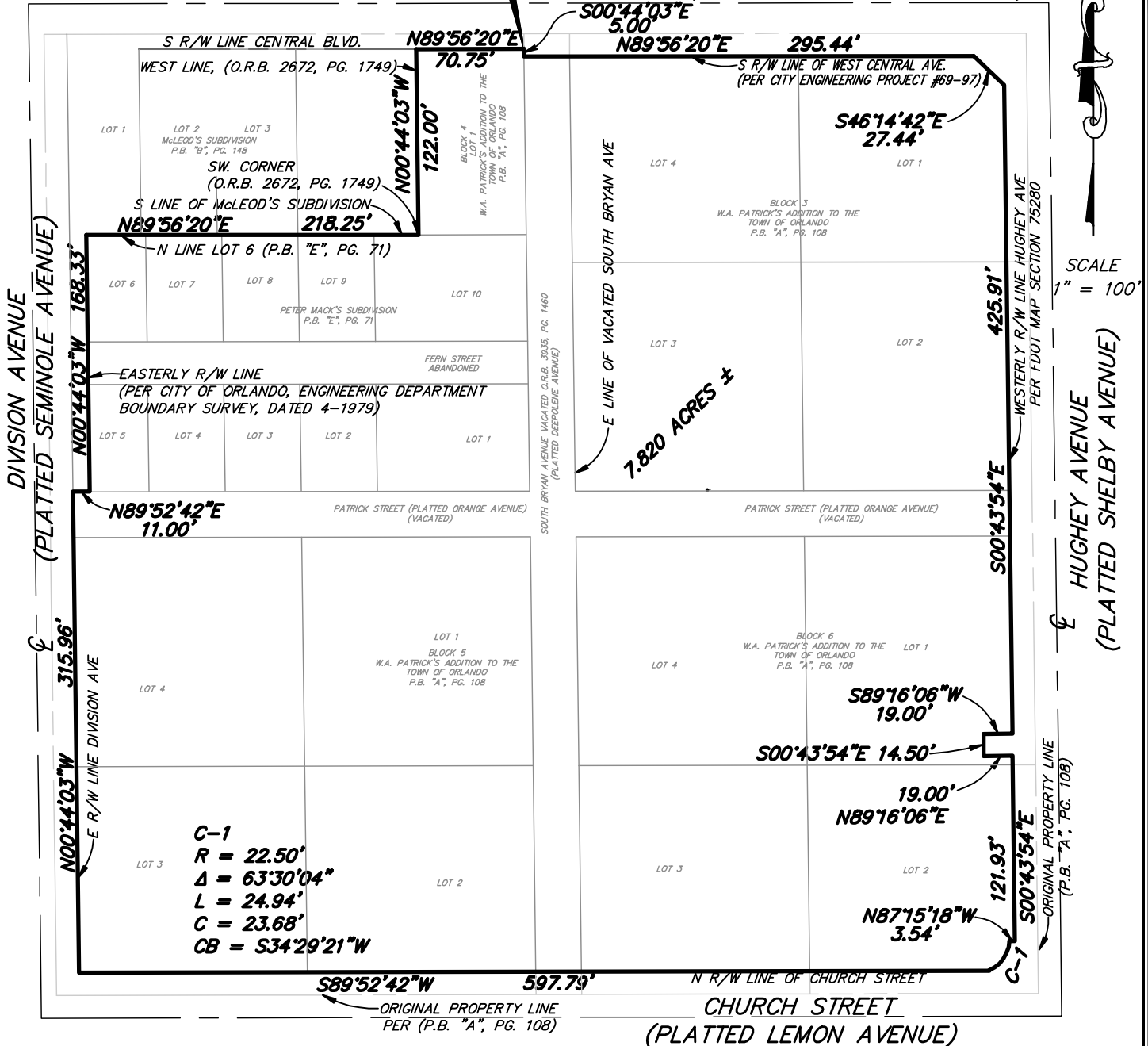
## LEGEND

- P.O.C.....POINT OF COMMENCEMENT
- P.O.B.....POINT OF BEGINNING
- R/W.....RIGHT-OF-WAY
- P.B.....PLAT BOOK
- PG.....PAGE
- O.R.B.....OFFICIAL RECORDS BOOK
- AVE.....AVENUE
- FDOT.....FLORIDA DEPARTMENT OF TRANSPORTATION
- CL.....CENTERLINE

## P.O.B.

NE CORNER  
O.R.B. 2672, PG. 1749

WEST CENTRAL AVENUE  
(PLATTED CENTRAL AVENUE)



(THIS IS NOT A SURVEY)

SEE SHEETS 1 AND 2 FOR LEGAL DESCRIPTION AND SURVEYOR'S NOTES.

SHEET 3 OF 3

# PEC

## SURVEYING AND MAPPING, LLC

CERTIFICATE OF AUTHORIZATION NUMBER LB 7808

2100 Alafaya Trail, Suite 203 • Oviedo, Florida 32765 • 407-542-4967

WWW.PECONLINE.COM

### SECTION 26, TOWNSHIP 22 SOUTH, RANGE 29 EAST

DATE: JANUARY 9, 2014

PREP BY: J.L.M.

DRAWN BY: J.L.M.

JOB #: 12-054

O:\12-054-SC Advisors OEC\12-054-ENTERTAINMENT COMPLEX.dwg Jan 09, 2014 - 9:40am