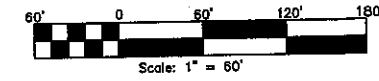


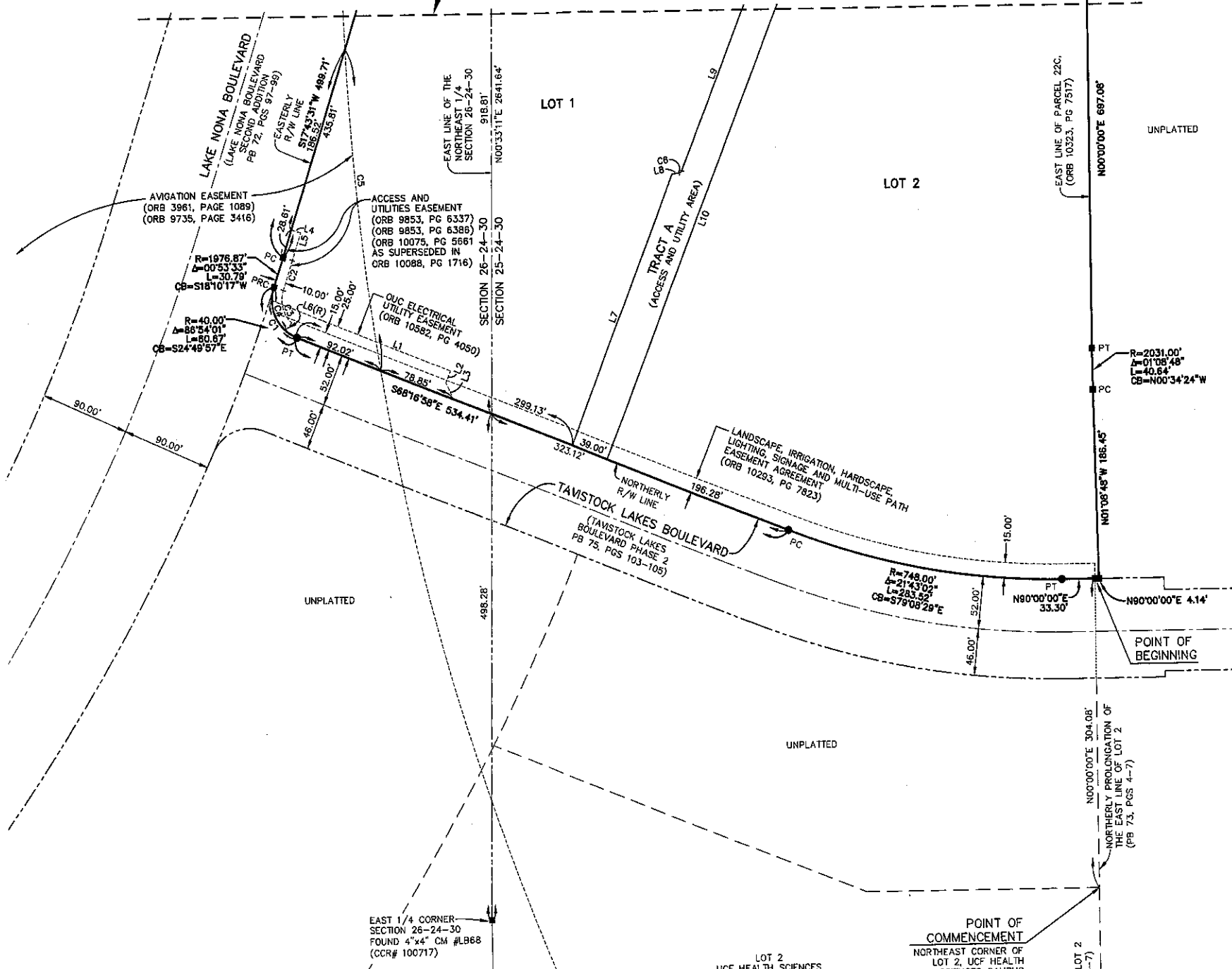
LAKE NONA SOUTH PARCEL 22C
 A PORTION OF SECTIONS 25 AND 26, TOWNSHIP 24 SOUTH, RANGE 30 EAST
 CITY OF ORLANDO, ORANGE COUNTY, FLORIDA

PLAT BOOK PAGE

SHEET 2 OF 3
 SEE SHEET 1 FOR NOTES AND LEGEND



MATCH LINE (SEE SHEET 3)



NOTICE: THIS PLAT, AS RECORDED IN ITS GRAPHIC FORM, IS THE OFFICIAL DEPICTION OF THE SUBDIVIDED LANDS DESCRIBED HEREIN AND WILL IN NO CIRCUMSTANCES BE SUPPLANTED IN AUTHORITY BY ANY OTHER GRAPHIC OR DIGITAL FORM OF THE PLAT. THERE MAY BE ADDITIONAL RESTRICTIONS THAT ARE NOT RECORDED ON THIS PLAT THAT MAY BE FOUND IN THE PUBLIC RECORDS OF THIS COUNTY.

PREPARED BY:

DONALD W. McINTOSH ASSOCIATES, INC.
 ENGINEERS PLANNERS SURVEYORS
 2200 PARK AVENUE NORTH, WINTER PARK, FLORIDA 32789 (407) 644-4068
 CERTIFICATE OF AUTHORIZATION NUMBER L6868

CURVE TABLE (THIS SHEET ONLY)

NUMBER	RADIUS	DELTA	LENGTH	CHORD	CHORD BEARING
C1	40.00'	67°58'32"	47.46'	44.72'	N34°17'41"W
C2	1986.87'	00°53'33"	30.95'	30.95'	S18°10'17"W
C3	30.00'	87°18'57"	35.25'	33.25'	S15°02'25"E
C4	40.00'	87°18'57"	47.00'	44.34'	N15°02'25"W
C5	2676.22'	06°51'11"	320.10'	319.91'	N06°00'34"W
C6	3.50'	60°00'00"	3.67'	3.50'	N51°43'03"E

LINE TABLE (THIS SHEET ONLY)

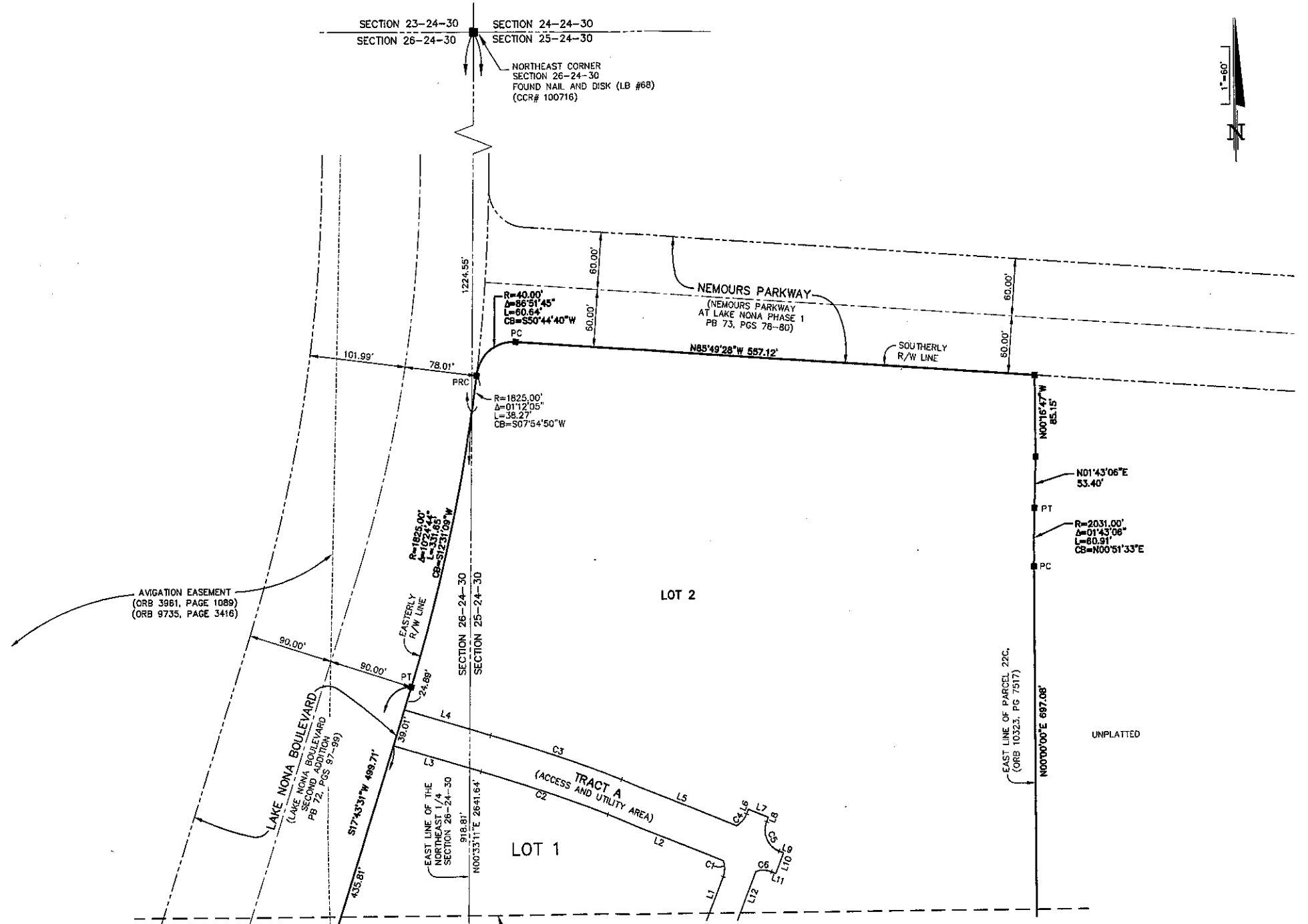
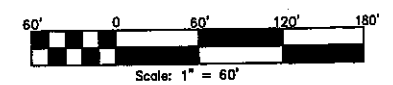
NUMBER	BEARING	DISTANCE
L1	S68°16'58"E	194.82'
L2	S21°43'02"W	12.57'
L3	S24°50'36"E	18.07'
L4	S72°16'29"E	10.00'
L5	S17°43'31"W	28.61'
L6	S41°18'07"W	110.00'

LINE TABLE (THIS SHEET ONLY)

NUMBER	BEARING	DISTANCE
L7	N21°43'03"E	286.70'
L8	N81°43'03"E	7.22'
L9	N21°43'03"E	210.83'
L10	S21°43'03"W	521.83'

Plotted: Mon 20-Jun-2014 - 03:18PM
 P:\Projects\122001\Draw\122001.dwg\Lake Nona South Parcel 22C.dwg

LAKE NONA SOUTH PARCEL 22C
 A PORTION OF SECTIONS 25 AND 26, TOWNSHIP 24 SOUTH, RANGE 30 EAST
 CITY OF ORLANDO, ORANGE COUNTY, FLORIDA



NOTICE: THIS PLAT, AS RECORDED IN ITS GRAPHIC FORM, IS THE OFFICIAL DEPICTION OF THE SUBDIVIDED LANDS DESCRIBED HEREIN AND WILL IN NO CIRCUMSTANCES BE SUPPLANTED IN AUTHORITY BY ANY OTHER GRAPHIC OR DIGITAL FORM OF THE PLAT. THERE MAY BE ADDITIONAL RESTRICTIONS THAT ARE NOT RECORDED ON THIS PLAT THAT MAY BE FOUND IN THE PUBLIC RECORDS OF THIS COUNTY.


MATCH LINE (SEE SHEET 2)

LINE TABLE (THIS SHEET ONLY)

NUMBER	BEARING	DISTANCE
L1	N21'43'03"E	210.83'
L2	N68'16'57"W	132.94'
L3	N73'48'10"W	98.59'
L4	S73'48'10"E	97.55'
L5	S68'16'57"E	132.94'
L6	N21'43'03"E	5.00'
L7	S68'16'57"W	23.00'
L8	S21'43'03"W	5.00'
L9	S68'16'57"E	5.00'
L10	S21'43'03"W	23.00'
L11	N68'16'57"W	5.00'
L12	S21'43'03"W	521.83'

CURVE TABLE (THIS SHEET ONLY)

NUMBER	RADIUS	DELTA	LENGTH	CHORD	CHORD BEARING
C1	23.50'	41'16"03"	16.93'	16.56'	N01'05'02"E
C2	1480.50'	05'31"13"	142.64'	142.58'	N71'02'34"W
C3	1519.50'	05'31"13"	146.40'	146.34'	S71'02'34"E
C4	23.50'	41'16"03"	16.93'	16.56'	N42'21'04"E
C5	23.50'	90'00"00"	36.91'	33.23'	S23'16'57"E
C6	23.50'	41'16"03"	16.93'	16.56'	N88'54'59"W

PREPARED BY:

DONALD W. MCINTOSH ASSOCIATES, INC.
 ENGINEERS PLANNERS SURVEYORS
 2200 PARK AVENUE NORTH, WINTER PARK, FLORIDA 32789 (407) 644-4068
 CERTIFICATE OF AUTHORIZATION NUMBER LB68

Drawn: Nov 20-2018 - 04:18PM
 P:\Projects\2018\112001\Drawings\Lake Nona South Parcel 22C.dwg

Plotted: 11/20/2018 10:04:00 AM
 P:\Projects\2018\112001\Drawings\Lake Nona South Parcel 22C.dwg