

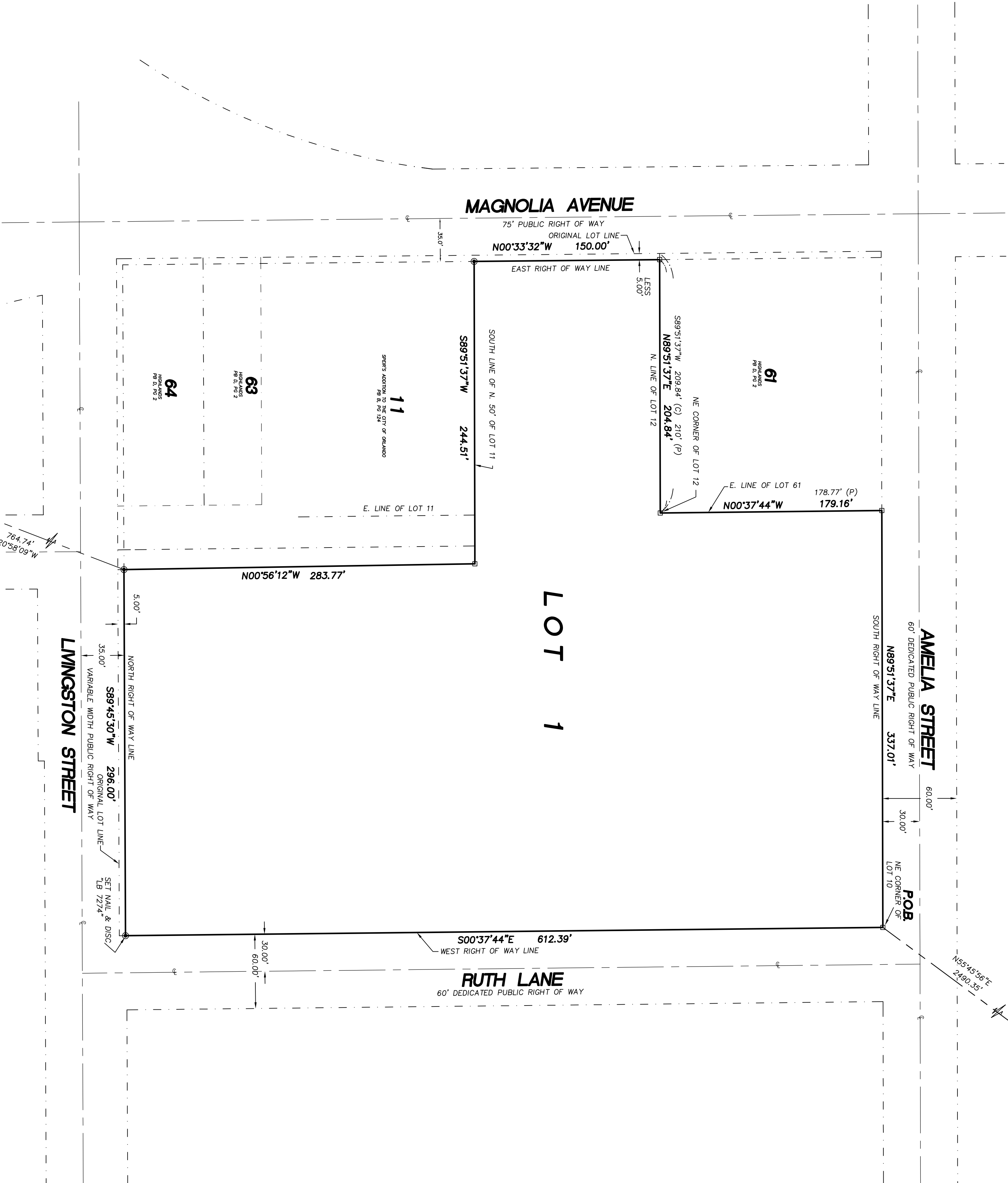
TRINITY DOWNTOWN

BEING A PARTIAL REPLAT OF LOTS 11 AND 12, SPEIR'S ADDITION TO THE CITY OF ORLANDO,
PLAT BOOK B, PAGE 124, A PARTIAL REPLAT OF LOT 59 AND 62, HIGHLANDS, PLAT BOOK D,
PAGE 2, AND A PARTIAL REPLAT OF LOTS 1 THROUGH 10, BLOCK A, DAVID LOCKHARTS

SUBDIVISION, PLAT BOOK F, PAGE 26

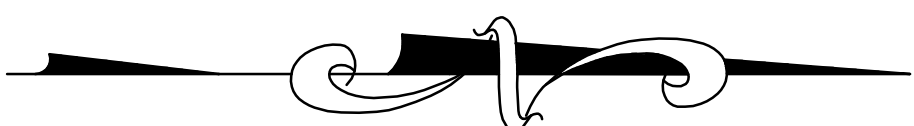
LYING IN SECTION 25, TOWNSHIP 22 SOUTH, RANGE 29 EAST
CITY OF ORLANDO, ORANGE COUNTY, FLORIDA

RECOVERED SECTION CORNER
RECEIVED AND UNDISTURBED
CORNER RECORD NO. 087786
N 1534013.666
E 537633.200

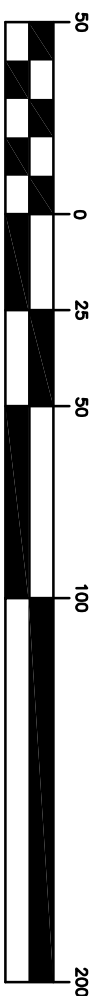


LEGEND

P.C. POINT OF CURVATURE
P.T. POINT OF TANGENCY
P.I. POINT OF INTERSECTION
N.T. NOT TANGENT
P.O.B. POINT OF BEGINNING
L.B. LICENSED BUSINESS
O.R. OFFICIAL RECORDS BOOK
P.G. PAGE
P.B. PLAT BOOK
C CENTERLINE



GRAPHIC SCALE



BISHMAN
SURVEYING
AND
MAPPING, INC.

20 S. MAIN STREET, SUITE 210
WINTER GARDEN, FL 34787
CERTIFICATE OF AUTHORIZATION
LB 7274
Phone No. 407.905.8877
Fax No. 407.905.6232
E-mail: www.bishmansurveying.com

RECOVERED SECTION CORNER
TIES AS INDICATED ON CERTIFIED
CORNER RECORD NO. 070561
N 1531285.4655
E 535271.8812