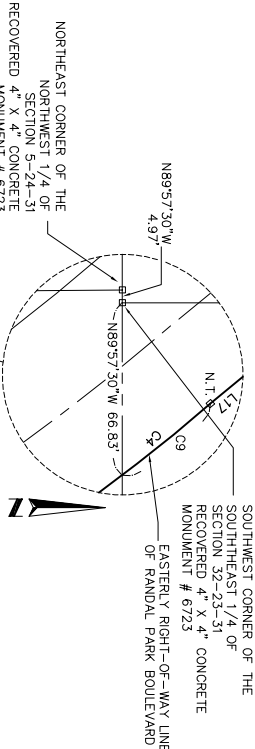






RANDAL PARK PHASE 3C

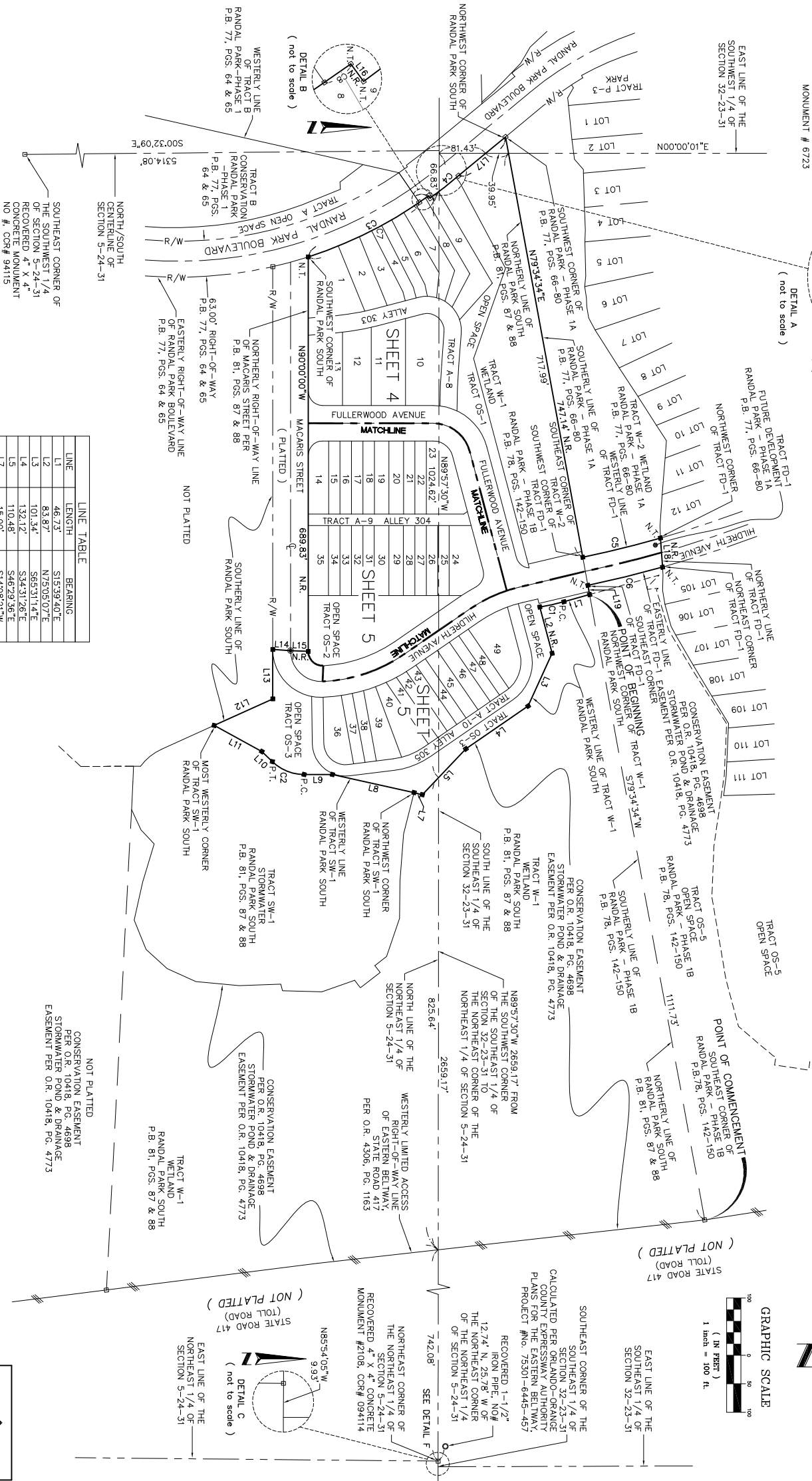
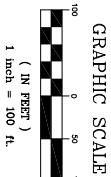
A REPLAT OF A PORTION OF RANDAL PARK SOUTH AS RECORDED IN PLAT BOOK 81, PAGES 87 AND 88 OF THE PUBLIC RECORDS OF ORANGE COUNTY, FLORIDA LYING IN SECTION 5, TOWNSHIP 24 SOUTH, RANGE 31 EAST, AND SECTION 32, TOWNSHIP 23 SOUTH, RANGE 31 EAST, CITY OF ORLANDO, ORANGE COUNTY, FLORIDA



DETAIL A  
( not to scale )



EAST LINE OF THE  
SOUTHWEST 1/4 OF  
SECTION 32-23-31



LINE TABLE		
LINE	LENGTH	BEARING
L1	46.73'	S19°59'40"E
L2	83.87'	N75°05'07"E
L3	101.34'	S65°31'14"E
L4	132.12'	S34°31'26"E
L5	110.46'	S46°29'36"E
L7	15.00'	S14°08'21"W
L8	146.17'	S12°30'02"W
L9	49.40'	S00°00'00"E
L10	25.50'	S44°05'22"W
L11	95.02'	S28°38'17"W
L12	112.47'	N24°19'09"W
L13	86.46'	N90°00'00"W
L14	31.06'	N03°35'59"E
L15	31.03'	N02°37'06"E
L16	5.03'	N54°02'28"E
L17	106.36'	N39°35'15"W
L18	51.05'	N85°53'57"E
L19	16.41'	N79°34'34"E

CURVE TABLE			
CURVE	RADIUS	LENGTH	CHORD
C1	345.00'	43.18'	43.15'
C2	80.00'	61.56'	60.05'
C3	743.00'	236.97'	235.97'
C4	764.27'	63.12'	63.10'
C5	1971.76'	140.02'	139.99'
C6	2021.76'	134.36'	134.33'

NOT PLATTED  
CONSERVATION EASEMENT  
PER O.R. 10418, PG. 4698  
STORMWATER POND & DRAINAGE  
EASEMENT PER O.R. 10418, PG. 4773



16 EAST PLANT STREET  
WINTER GARDEN, FLORIDA 34787  
(407) 654-5555

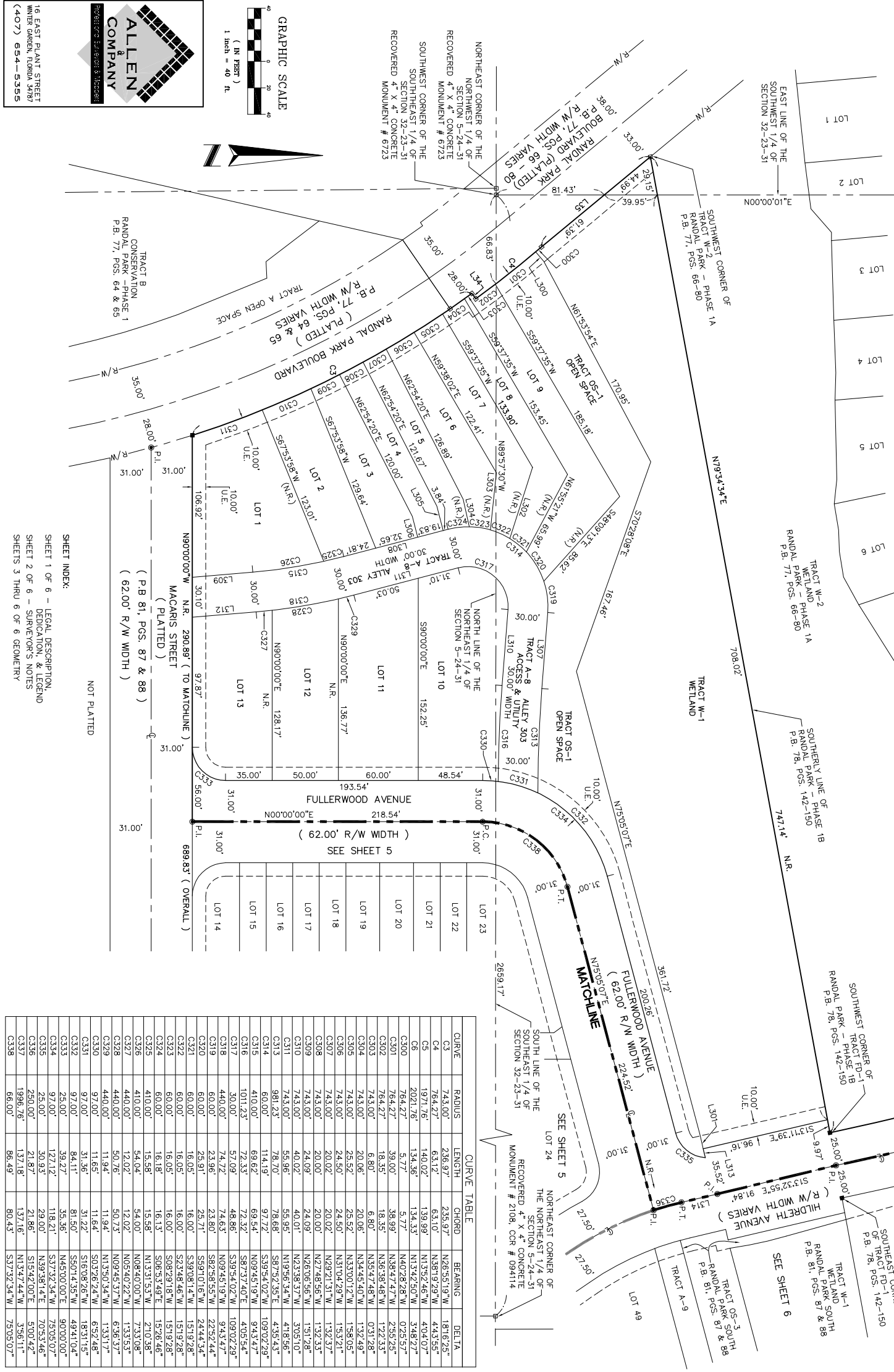
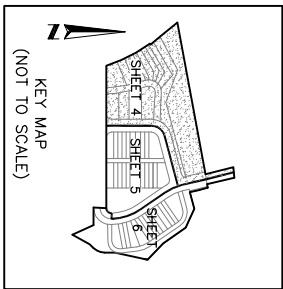
RANDAL PARK PHASE 3C

SHEET 4 OF 6

PLAT BOOK PAGE

A REPLAT OF A PORTION OF RANDAL PARK SOUTH AS RECORDED IN  
PLAT BOOK 81, PAGES 87 AND 88 OF THE PUBLIC RECORDS OF ORANGE COUNTY, FLORIDA  
LYING IN SECTION 5, TOWNSHIP 24 SOUTH, RANGE 31 EAST, AND SECTION 32, TOWNSHIP 23 SOUTH, RANGE 31 EAST  
CITY OF ORLANDO, ORANGE COUNTY, FLORIDA

LINE TABLE		
LINE	LENGTH	BEARING
L34	5.03'	N64°02'28"E
L35	106.38'	N39°15'15"W
L36	51.05'	N85°53'57"E
L300	9.50'	N46°44'30"E
L301	10.20'	N76°48'21"E
L302	58.22'	N72°16'52"W
L303	43.33'	S84°00'46"E
L304	21.28'	N77°09'45"E
L305	19.10'	N73°22'48"E
L306	16.17'	N73°22'48"E
L307	57.37'	S85°34'43"E
L308	81.13'	N4°37'12"W
L309	45.65'	N04°53'25"W
L310	57.37'	S85°34'43"E
L311	81.13'	N4°37'12"W
L312	48.22'	N04°53'25"W
L313	6.86'	S76°48'21"W
L314	27.75'	S131°1'39"E



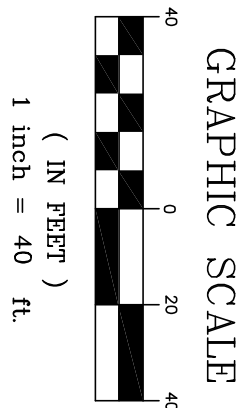
CURVE	RADIUS	LENGTH	CHORD	BEARING	DELTA
C3	743.00'	236.97'	235.97'	N26°53'19"W	181°6'25"
C4	764.20'	63.12'	63.10'	N38°19'29"W	4°43'55"
C5	1971.76'	140.02'	139.99'	N13°52'46"W	4°04'07"
C6	2021.76'	134.36'	134.33'	N13°42'50"W	3°48'27"
C300	764.27'	5.77'	5.77'	N40°28'28"W	0°25'57"
C301	764.27'	39.00'	38.99'	N8°47'47"W	2°55'25"
C302	764.27'	18.35'	18.35'	N36°38'48"W	1°22'33"
C303	743.00'	6.80'	6.80'	N35°47'48"W	0°31'28"
C304	743.00'	20.06'	20.06'	N34°45'40"W	1°32'49"
C305	743.00'	26.52'	25.52'	N33°00'12"W	1°58'05"
C306	743.00'	24.50'	24.50'	N31°04'29"W	1°53'21"
C307	743.00'	20.02'	20.02'	N29°21'31"W	1°32'37"
C308	743.00'	20.00'	20.00'	N27°48'56"W	1°32'33"
C309	743.00'	24.09'	24.09'	N23°38'37"W	3°05'10"
C310	743.00'	40.02'	40.01'	N23°06'56"W	1°51'28"
C311	743.00'	55.96'	55.95'	N19°56'34"W	4°18'56"
C312	981.23'	78.70'	78.68'	S87°52'35"E	4°35'43"
C313	981.23'	114.19'	97.72'	S39°54'02"W	10°02'29"
C314	60.00'	69.62'	69.54'	N09°45'19"W	9°43'47"
C315	410.00'	69.62'	72.32'	S87°37'40"E	4°05'54"
C316	101.23'	72.33'	48.86'	S39°54'02"W	10°02'29"
C317	30.00'	57.09'	48.86'	N09°45'19"W	9°43'47"
C318	440.00'	74.72'	74.63'	S82°58'55"W	22°52'44"
C319	60.00'	23.96'	23.80'	S82°58'55"W	22°52'44"
C320	60.00'	25.91'	25.71'	S89°10'16"W	24°44'34"
C321	60.00'	16.05'	16.00'	S39°08'14"W	15°19'28"
C322	60.00'	16.05'	16.00'	S23°48'46"W	15°19'28"
C323	60.00'	16.05'	16.00'	S08°29'18"W	15°19'28"
C324	60.00'	16.18'	16.13'	S06°53'49"E	15°26'46"
C325	410.00'	15.58'	15.58'	N08°40'00"W	7°33'08"
C326	410.00'	54.04'	54.00'	N05°40'22"W	1°33'53"
C327	440.00'	12.02'	12.02'	N05°40'22"W	1°33'53"
C328	440.00'	50.76'	50.72'	N09°45'37"W	6°36'37"
C329	440.00'	11.94'	11.94'	N13°50'34"W	1°33'17"
C330	97.00'	11.65'	11.64'	S03°26'24"W	6°52'48"
C331	97.00'	31.96'	31.92'	S06°08'20"W	18°31'15"
C332	97.00'	84.11'	81.50'	S50°14'55"W	48°41'04"
C333	23.00'	35.27'	35.36'	N45°00'00"E	90°00'00"
C334	97.00'	127.12'	118.21'	S37°32'34"W	75°03'07"
C335	25.00'	30.93'	29.00'	N39°36'14"E	70°53'46"
C336	250.00'	21.87'	21.86'	S15°42'00"E	5°00'42"
C337	1996.78'	137.18'	137.16'	N13°47'44"W	3°56'11"
C338	66.00'	86.49'	80.43'	S37°32'34"W	75°03'07"



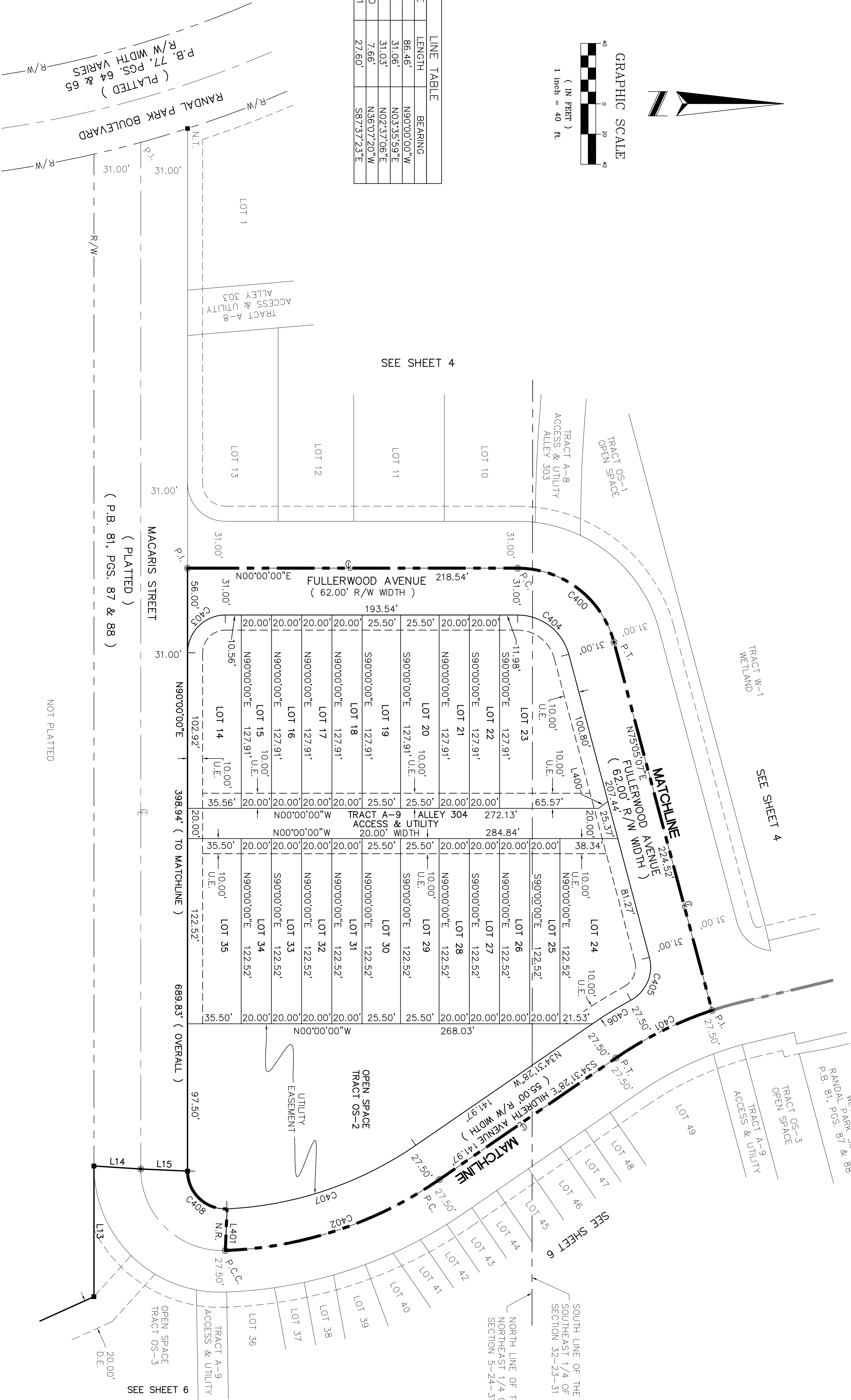
16 EAST PLANT STREET  
WINTER GARDEN, FLORIDA 32787  
(407) 654-5355

RANDAL PARK PHASE 3C

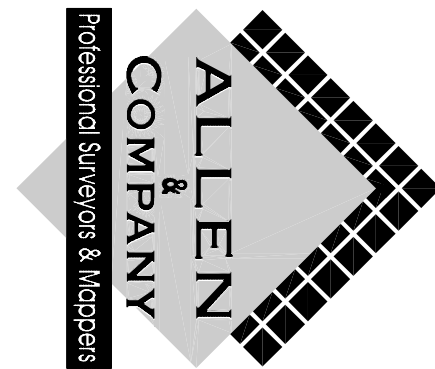
A REPLAT OF A PORTION OF RANDAL PARK SOUTH AS RECORDED IN  
PLAT BOOK 81, PAGES 87 AND 88 OF THE PUBLIC RECORDS OF ORANGE COUNTY, FLORIDA  
LYING IN SECTION 5, TOWNSHIP 24 SOUTH, RANGE 31 EAST,  
AND SECTION 32, TOWNSHIP 23 SOUTH, RANGE 31 EAST,  
CITY OF ORLANDO, ORANGE COUNTY, FLORIDA



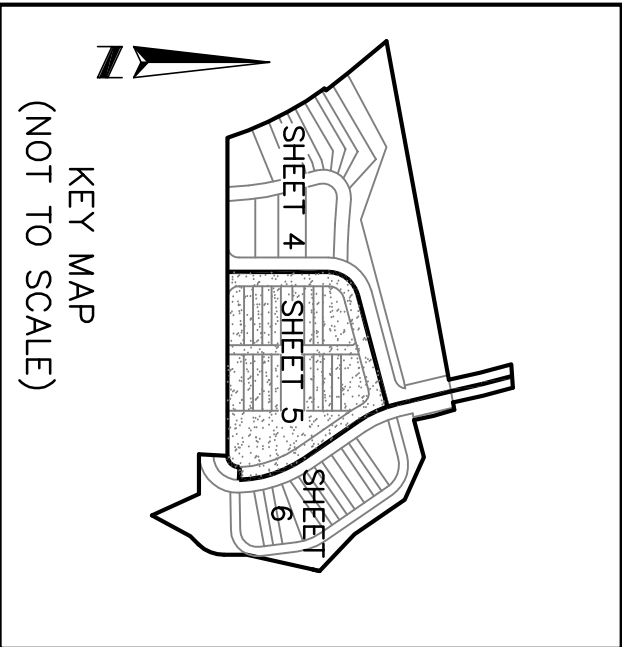
LINE	LENGTH	BEARING
L13	86.46'	N90°00'00"W
L14	31.06'	N03°35'59"E
L15	31.03'	N02°37'06"E
L400	7.66'	N56°07'20"W
L401	27.60'	S87°37'23"E



CURVE TABLE					
CURVE	RADIUS	LENGTH	CHORD	BEARING	DELTA
C400	66.00'	86.49'	80.43'	S37°32'34"W	75°05'07"
C401	250.00'	71.20'	70.96'	S26°21'55"E	16°19'06"
C402	267.50'	151.21'	149.20'	N18°19'51"W	32°23'13"
C403	25.00'	39.27'	35.36'	S45°00'00"E	90°00'00"
C404	35.00'	45.87'	42.65'	S37°32'34"W	75°05'07"
C405	25.00'	33.40'	30.97'	N66°38'20"W	76°33'05"
C406	277.50'	29.84'	29.83'	S31°26'38"E	6°09'40"
C407	240.00'	133.49'	131.78'	N18°35'25"W	51°52'06"
C408	25.00'	40.43'	36.17'	N43°40'19"E	92°39'21"



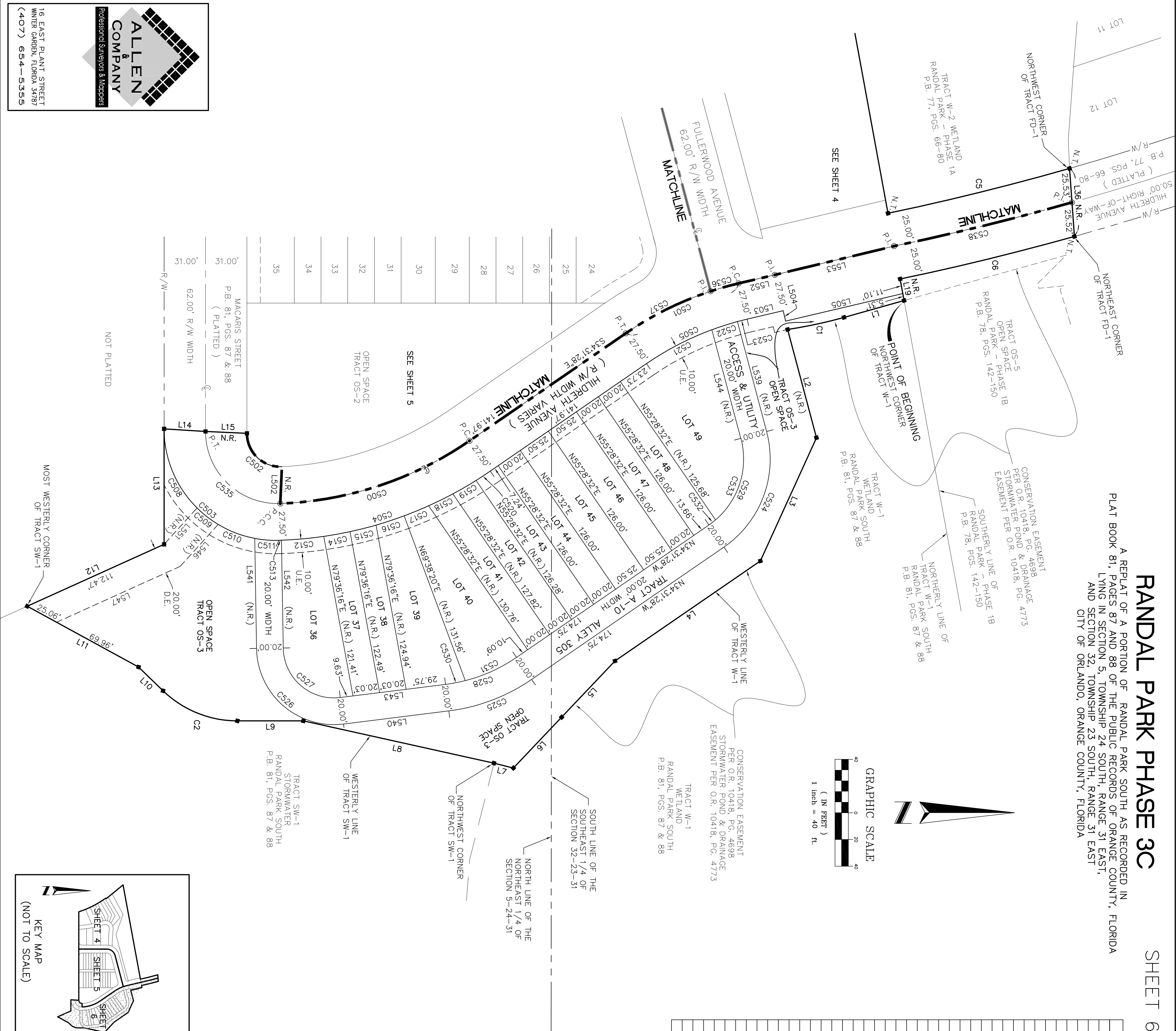
16 EAST PLANT STREET  
WINTER GARDEN, FLORIDA 34787  
(407) 654-5355





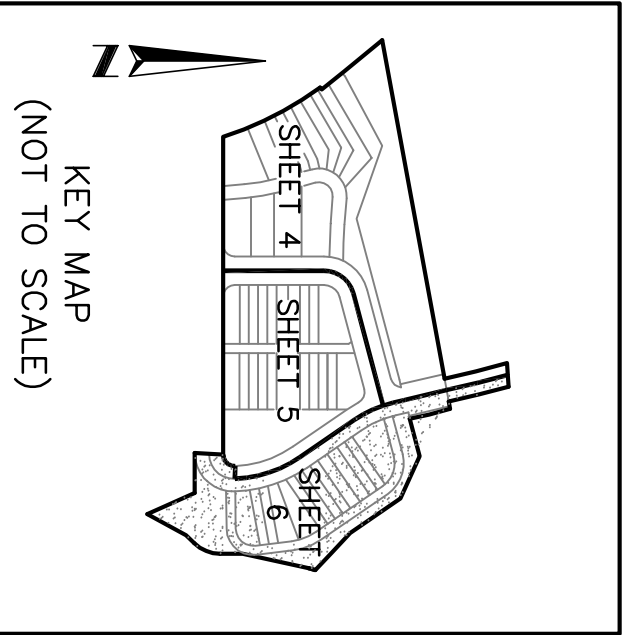
RANDAL PARK PHASE 3C

A REPLAT OF A PORTION OF RANDAL PARK SOUTH AS RECORDED IN  
PLAT BOOK 81, PAGES 87 AND 88 OF THE PUBLIC RECORDS OF ORANGE COUNTY, FLORIDA  
LYING IN SECTION 5, TOWNSHIP 24 SOUTH, RANGE 31 EAST,  
AND SECTION 32, TOWNSHIP 23 SOUTH, RANGE 31 EAST  
CITY OF ORLANDO, ORANGE COUNTY, FLORIDA



CURVE TABLE				
CURVE	RADIUS	LENGTH	CHORD	BEARING
C1	345.00'	43.18'	43.15'	N12°04.3'W
C2	80.00'	61.56'	60.05'	N22°02.41'E
C3	1971.76'	140.02'	139.99'	N13°52.46'W
C6	2021.76'	134.36'	134.33'	N13°42.50'W
C600	267.50'	151.21'	149.20'	N18°19.51'W
C501	250.00'	93.07'	92.53'	N23°51.33'E
C502	25.00'	40.43'	36.17'	N43°40.19'E
C503	83.50'	133.71'	119.88'	N44°07.28'E
C504	295.00'	166.74'	166.45'	N18°08.16'W
C505	222.50'	82.83'	82.85'	S23°51.33'E
C508	83.50'	65.88'	64.18'	N67°23.58'E
C509	83.50'	20.10'	20.06'	N37°53.58'E
C510	83.50'	29.45'	29.30'	N20°53.54'E
C511	83.50'	18.28'	18.25'	N40°31.19'E
C512	295.00'	31.80'	31.79'	N05°11.45'W
C513	295.00'	1.84'	1.84'	N01°55.45'W
C514	295.00'	20.00'	20.00'	N101°33.7'W
C515	295.00'	20.05'	20.04'	N14°06.59'W
C516	295.00'	22.19'	22.19'	N18°13.06'W
C517	295.00'	19.81'	19.81'	N22°17.51'W
C518	295.00'	20.22'	20.21'	N26°11.06'W
C519	295.00'	20.06'	20.06'	N30°05.48'W
C520	295.00'	12.76'	12.76'	N33°17.05'W
C521	222.50'	55.27'	55.33'	S27°24.30'E
C522	222.50'	20.03'	20.02'	S17°42.48'E
C523	222.50'	7.53'	7.53'	S14°09.52'E
C524	80.00'	98.28'	92.22'	N69°43.10'W
C525	140.00'	66.97'	66.33'	N20°49.14'W
C526	58.00'	97.37'	86.33'	N40°58.44'E
C527	38.00'	63.80'	56.56'	N40°58.44'E
C528	120.00'	57.40'	56.86'	N20°49.14'W
C529	60.00'	73.71'	69.16'	N69°43.10'W
C530	120.00'	15.07'	15.06'	N10°42.51'W
C531	120.00'	42.33'	42.11'	N24°25.05'W
C532	60.00'	6.25'	6.24'	N37°30.23'W
C533	60.00'	67.47'	63.97'	N72°42.06'W
C535	54.00'	86.84'	77.78'	N43°55.53'E
C536	250.00'	21.87'	21.86'	S15°42.00'E
C537	250.00'	71.20'	70.96'	S26°21.95'E
C538	1996.76'	137.18'	137.16'	N137°14.4'W

LINE TABLE		
LINE	LENGTH	BEARING
L1	46.73'	S15°39.40'E
L2	83.87'	N7°50.07'E
L3	101.34'	S6°51.14'E
L4	132.12'	S34°31.26'E
L5	58.02'	S46°29.36'E
L6	52.46'	S46°29.36'E
L7	15.00'	S14°08.21'W
L8	146.17'	S12°30.02'W
L9	49.40'	S00°00.00'E
L10	25.50'	S44°05.22'W
L11	95.02'	S28°38.17'W
L12	112.47'	N24°19.09'W
L13	86.46'	N69°00.00'W
L14	31.06'	N03°35.59'E
L15	31.03'	N02°37.06'E
L19	16.41'	N7°34.34'E
L36	51.05'	N85°53.57'E
L502	27.60'	S87°37.23'E
L503	27.75'	S13°11.39'E
L504	8.00'	S76°48.21'W
L505	90.09'	S13°11.39'E
L539	85.17'	S7°50.50'W
L540	79.44'	N07°07.00'W
L541	82.34'	N89°04.28'E
L542	80.64'	N89°04.28'E
L543	79.44'	N07°07.00'W
L544	84.19'	S7°50.50'W
L545	27.50'	N76°48.21'E
L546	42.38'	N47°48.25'W
L547	101.54'	S24°19.09'E
L551	36.73'	N47°48.25'W
L552	27.75'	S13°11.39'E
L553	91.84'	S13°32.95'E



ALLEN & COMPANY

Professional Surveyors & Mappers

16 EAST PLANT STREET  
WINTER GARDEN, FLORIDA 34787  
(407) 654-5355

SHEET INDEX:

SHEET 1 OF 6 - LEGAL DESCRIPTION,  
DEDICATION, & LEGEND  
SHEET 2 OF 6 - SURVEYOR'S NOTES  
SHEETS 3 THRU 6 OF 6 GEOMETRY