

UP DEVELOPMENT EAST COLONIAL UNIT 1
A REPLAT

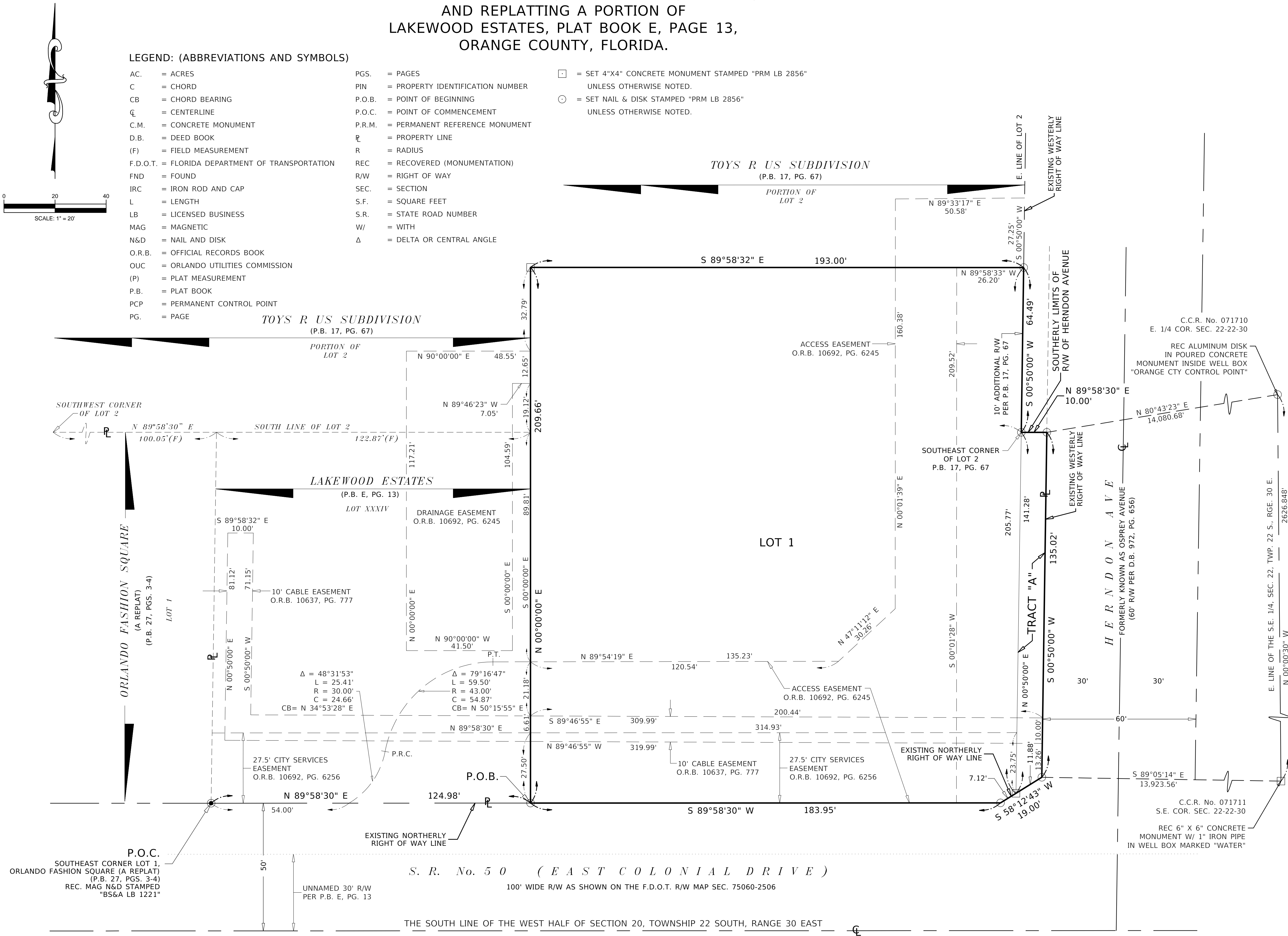
BOOK

PAGE

A PORTION OF SECTION 20, TOWNSHIP 22 SOUTH, RANGE 30 EAST,
AND REPLATTING A PORTION OF LOT 2,
TOYS R US SUBDIVISION, PLAT BOOK 17, PAGE 67,
AND REPLATTING A PORTION OF
LAKEWOOD ESTATES, PLAT BOOK E, PAGE 13,
ORANGE COUNTY, FLORIDA.

LEGEND: (ABBREVIATIONS AND SYMBOLS)

AC.	= ACRES	PGS.	= PAGES	□	= SET 4"X4" CONCRETE MONUMENT STAMPED "PRM LB 2856"
C	= CHORD	PIN	= PROPERTY IDENTIFICATION NUMBER		UNLESS OTHERWISE NOTED.
CB	= CHORD BEARING	P.O.B.	= POINT OF BEGINNING	○	= SET NAIL & DISK STAMPED "PRM LB 2856"
CL	= CENTERLINE	P.O.C.	= POINT OF COMMENCEMENT		UNLESS OTHERWISE NOTED.
C.M.	= CONCRETE MONUMENT	P.R.M.	= PERMANENT REFERENCE MONUMENT		
D.B.	= DEED BOOK	PL	= PROPERTY LINE		
(F)	= FIELD MEASUREMENT	R	= RADIUS		
F.D.O.T.	= FLORIDA DEPARTMENT OF TRANSPORTATION	REC	= RECOVERED (MONUMENTATION)		
FND	= FOUND	R/W	= RIGHT OF WAY		
IRC	= IRON ROD AND CAP	SEC.	= SECTION		
L	= LENGTH	S.F.	= SQUARE FEET		
LB	= LICENSED BUSINESS	S.R.	= STATE ROAD NUMBER		
MAG	= MAGNETIC	W/	= WITH		
N&D	= NAIL AND DISK	Δ	= DELTA OR CENTRAL ANGLE		
O.R.B.	= OFFICIAL RECORDS BOOK				
OUC	= ORLANDO UTILITIES COMMISSION				
(P)	= PLAT MEASUREMENT				
P.B.	= PLAT BOOK				
PCP	= PERMANENT CONTROL POINT				
PG.	= PAGE				



LOCHRANE

Consulting Engineers • Surveyors

201 SOUTH BUMBY AVENUE, ORLANDO, FLORIDA 32803

PH: (407) 896-3317 FAX: (407) 896-9167

SHEET 2 OF 2